

SCAT CATEGORY

PNER COLLET CHUCK	E-3
PTER COLLET CHUCK	E-4
UT COLLET CHUCK	E-5
ER COLLET CHUCK	E-6~7
ER COLLET CHUCK [M TYPE]	E-8
SKX COLLET CHUCK	E-9~10
SK3 COLLET CHUCK	E-11
SKS COLLET CHUCK	E-12
SBL SLIM-FIT COLLET CHUCK	E-13
SBLC SLIM-FIT COLLET CHUCK	E-14
EBL SLIM-FIT COLLET CHUCK	E-15
MLD MULTI-LOCK MILLING CHUCK	E-16
SLN SIDE LOCK END MILL HOLDER	E-17
FACE MILL ARBOR	E-18
MORSE TAPER ADAPTER	E-19
ADAPTER	E-20
BLANK	E-21

REFERENCE DETAILS

▶ Taper tolerance < **AT3**

▶ Hardness > **HRC 56°**

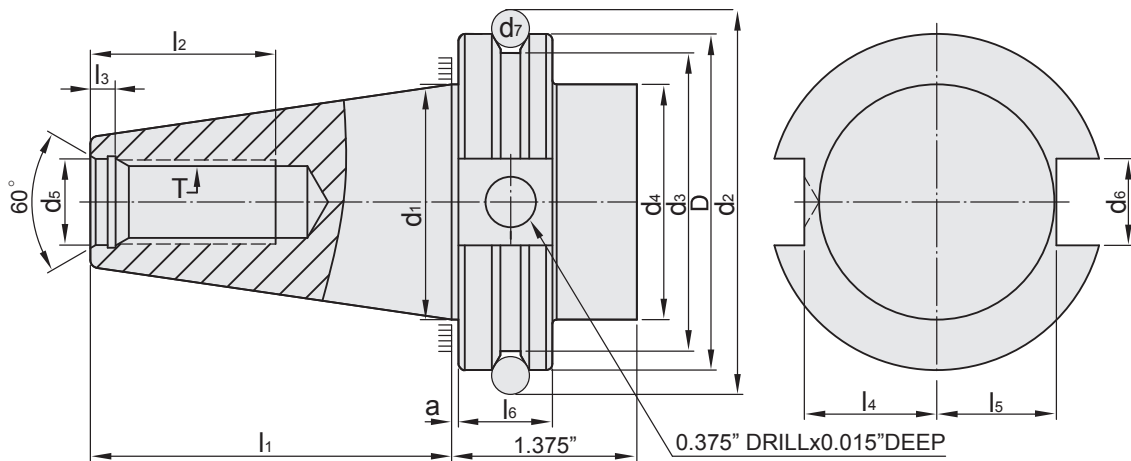
▶ Surface roughness: Ra < **0.25 μm**

▶ Roundness < **0.8 μm**

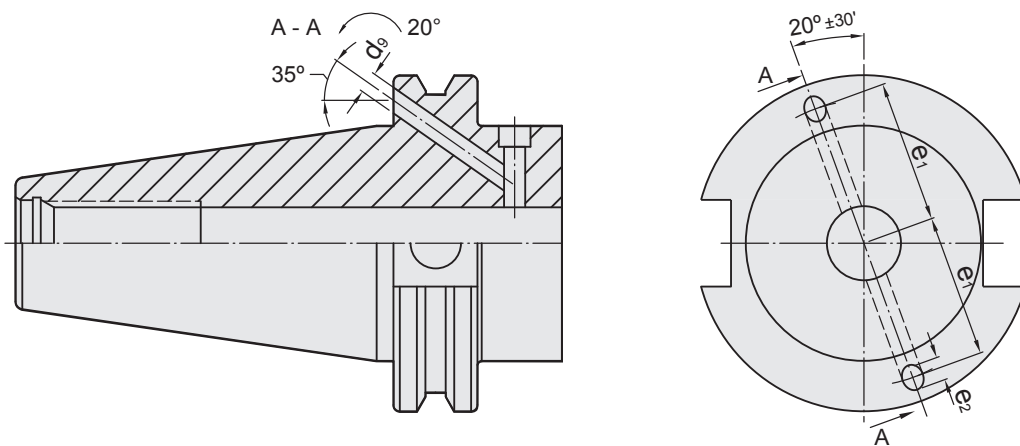
▶ Carbon depth > **0.8mm**

▶ The shank has pre-balance at G6.3, and can provide precision balance at G2.5. It can be ordered by request.

SCAT A



SCAT AD+B



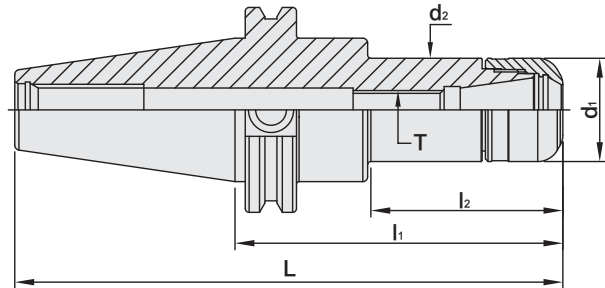
INCHES

SCAT	D ±0.002	d ₁	d ₂ ±0.002	d ₃ ±0.01	d ₄ ±0.005	d ₅ +0.015 0	d ₆ ±0.01	d ₇	d ₉	a 0 -0.005
40	2.500	1.750	2.863	2.219	1.750	0.641	0.645	0.2813	0.157	0.037
50	3.875	2.750	4.238	3.594	2.750	1.031	1.020	0.2813	0.236	0.057
SCAT	l ₁ ±0.005	l ₂ min	l ₃ ±0.01	l ₄ +0 -0.015	l ₅ +0 -0.015	l ₆	e ₁ ±0.1	e ₂ MAX	T UNC 2B	
40	2.687	1.12	0.188	0.985	0.890	0.713	1.063	0.199	5/8" - 11	
50	4.000	1.75	0.250	1.485	1.390	0.693	1.654	0.276	1" - 8	

SCAT / PNER COLLET CHUCK



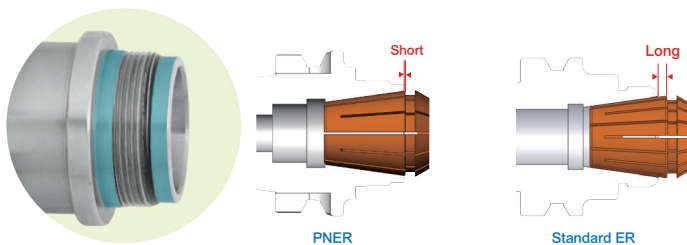
SCAT / PNER 法蘭加厚型立銑刀夾頭



T W PAT NO. M298033
 T W PAT NO. M311791
 T W PAT NO. M501316
 J P PAT NO. 3128766
 J P PAT NO. 3200356
 K R PAT NO. 20-0433603
 C N PAT NO. ZL200620132661.0
 C H PAT NO. 696550
 T R PAT NO. TR 2007 02942 Y
 I T PAT NO. N.0000266731
 D E PAT NO.Nr.202015005621

INCHES

MODEL NO.	TYPE	L	l ₁	l ₂	d ₁	d ₂	T	SIZE RANGE	WEIGHT (KGS)
43.273.16.250	SCAT40 x PNER16 - 2.5"	5.187	2.5	1.06	1.18	1.18	M10 x 1.5P	0.125 ~ 0.375	1.05
43.273.16.400	SCAT40 x PNER16 - 4"	6.687	4	2.43	1.18	1.18	M10 x 1.5P	0.125 ~ 0.375	1.35
43.273.16.500	SCAT40 x PNER16 - 5"	7.687	5	3.43	1.18	1.18	M10 x 1.5P	0.125 ~ 0.375	1.65
43.273.20.300	SCAT40 x PNER20 - 3"	5.687	3	1.5	1.25	1.25	M12 x 1.75P	0.125 ~ 0.5	1.25
43.273.20.400	SCAT40 x PNER20 - 4"	6.687	4	2.5	1.25	1.25	M12 x 1.75P	0.125 ~ 0.5	1.65
43.273.25.400	SCAT40 x PNER25 - 4"	6.687	4	2.54	1.57	1.57	M16 x 2.0P	0.125 ~ 0.625	1.85
43.273.32.300	SCAT40 x PNER32 - 3"	5.687	3	1.51	1.96	1.96	M16 x 2.0P	0.125 ~ 0.75	1.16
43.273.32.400	SCAT40 x PNER32 - 4"	6.687	4	2.51	1.96	1.96	M16 x 2.0P	0.125 ~ 0.75	1.50
43.273.32.500	SCAT40 x PNER32 - 5"	7.687	5	3.51	1.96	1.96	M16 x 2.0P	0.125 ~ 0.75	1.75
43.273.32.600	SCAT40 x PNER32 - 6"	8.687	6	4.51	1.96	1.96	M16 x 2.0P	0.125 ~ 0.75	2.15
43.273.40.400	SCAT40 x PNER40 - 4"	6.687	4	2.62	2.48	2.48	M20 x 2.0P	0.250 ~ 1	1.80
44.273.16.400	SCAT50 x PNER16 - 4"	8	4	2.03	1.18	1.18	M10 x 1.5P	0.125 ~ 0.375	4.05
44.273.16.600	SCAT50 x PNER16 - 6"	10	6	4.03	1.18	1.18	M10 x 1.5P	0.125 ~ 0.375	4.40
44.273.20.400	SCAT50 x PNER20 - 4"	8	4	2.14	1.25	1.25	M12 x 1.75P	0.125 ~ 0.5	4.20
44.273.20.600	SCAT50 x PNER20 - 6"	10	6	4.14	1.25	1.25	M12 x 1.75P	0.125 ~ 0.5	4.45
44.273.25.400	SCAT50 x PNER25 - 4"	8	4	2.38	1.57	1.57	M16 x 2.0P	0.125 ~ 0.625	4.15
44.273.25.600	SCAT50 x PNER25 - 6"	10	6	4.38	1.57	1.57	M16 x 2.0P	0.125 ~ 0.625	4.50
44.273.32.400	SCAT50 x PNER32 - 4"	8	4	2.42	1.96	1.96	M16 x 2.0P	0.125 ~ 0.75	4.35
44.273.32.600	SCAT50 x PNER32 - 6"	10	6	4.42	1.96	1.96	M16 x 2.0P	0.125 ~ 0.75	4.60
44.273.40.400	SCAT50 x PNER40 - 4"	8	4	2.48	2.48	2.48	M20 x 2.0P	0.250 ~ 1	5.26
44.273.40.600	SCAT50 x PNER40 - 6"	10	6	4.65	2.48	2.48	M20 x 2.0P	0.250 ~ 1	6.36



Features:

► PN collet is well covered in PNER tool holder, improving overall runout accuracy and the machining stability.

Product information:

- Balance: G2.5 25,000 rpm. Higher balancing grade and revolution can be done upon request but additional charge is needed.
- AD+B type is available, please inform us when making an order.
- Use PN 3µm collet.

Standard Accessory: • NUT

Collet	Nut	Pull Stud	Preset Screw	Spanner
P.W-5	P.W-45	P.W-62	P.W-88	P.W-68~73



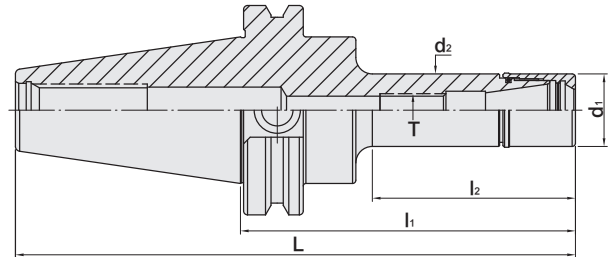
SCAT / PTER COLLET CHUCK



SCAT / PTER 法蘭加厚型立銑刀夾頭



T W PAT NO. M298033
 T W PAT NO. M311791
 J P PAT NO. 3128766
 J P PAT NO. 3200356
 K R PAT NO. 20-0433603
 C N PAT NO. ZL200620132661.0
 C H PAT NO. 696550
 T R PAT NO. TR 2007 02942 Y
 I T PAT NO. N.0000266731



INCHES

MODEL NO.	TYPE	L	l ₁	l ₂	d ₁	d ₂	T	SIZE RANGE	WEIGHT (KGS)
43.528.11.275	SCAT40 x PTER11 - 2.75"	5.437	2.75	1.606	0.629	0.629	M6 x 1.0P	0.125 ~ 0.25	1.00
43.528.11.400	SCAT40 x PTER11 - 4"	6.687	4	2.228	0.629	0.629	M6 x 1.0P	0.125 ~ 0.25	1.45
43.528.11.600	SCAT40 x PTER11 - 6"	8.687	6	4.228	0.629	0.629	M6 x 1.0P	0.125 ~ 0.25	1.12
43.528.11.850	SCAT40 x PTER11 - 8.5"	10.687	8.5	6.228	0.629	0.629	M6 x 1.0P	0.125 ~ 0.25	1.18
43.528.16.276	SCAT40 x PTER16 - 2.76"	5.443	2.76	1.612	0.866	0.866	M10 x 1.5P	0.125 ~ 0.375	1.02
43.528.16.400	SCAT40 x PTER16 - 4"	6.687	4	2.856	0.866	0.866	M10 x 1.5P	0.125 ~ 0.375	1.07
43.528.16.600	SCAT40 x PTER16 - 6"	8.687	6	4.228	0.866	0.866	M10 x 1.5P	0.125 ~ 0.375	1.16
43.528.16.800	SCAT40 x PTER16 - 8"	10.687	8	6.228	0.866	0.866	M10 x 1.5P	0.125 ~ 0.375	1.25
43.528.20.276	SCAT40 x PTER20 - 2.76"	5.443	2.76	1.612	1.102	1.102	M12 x 1.75P	0.125 ~ 0.5	1.03
44.528.11.600	SCAT50 x PTER11 - 6"	10	6	4.228	0.629	0.629	M6 x 1.0P	0.125 ~ 0.25	3.10
44.528.16.400	SCAT50 x PTER16 - 4"	8	4	2.228	0.866	0.866	M10 x 1.5P	0.125 ~ 0.375	3.12
44.528.16.600	SCAT50 x PTER16 - 6"	10	6	4.228	0.866	0.866	M10 x 1.5P	0.125 ~ 0.375	3.21
44.528.16.800	SCAT50 x PTER16 - 8"	12	8	6.228	0.866	0.866	M10 x 1.5P	0.125 ~ 0.375	3.30
44.528.20.400	SCAT50 x PTER20 - 4"	8	4	2.228	1.102	1.102	M12 x 1.75P	0.125 ~ 0.5	3.11
44.528.20.600	SCAT50 x PTER20 - 6"	10	6	4.228	1.102	1.102	M12 x 1.75P	0.125 ~ 0.5	3.21

Product information:

- ▶ Balance: G2.5 25,000 rpm. Higher balancing grade and revolution can be done upon request but additional charge is needed.
- ▶ AD+B type is available, please inform us when making an order.
- ▶ Use PN-U 5µm collet.

Standard Accessory: • NUT

Collet	Nut	Pull Stud	Preset Screw	Spanner
P.W-5	P.W-47	P.W-62	P.W-88	P.W-68~73

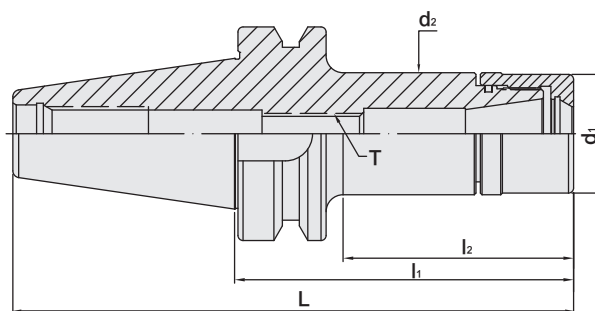
SCAT / UT COLLET CHUCK



SCAT / UT 法蘭加厚型立銑刀夾頭



T W PAT NO. M298033
 T W PAT NO. M311791
 J P PAT NO. 3128766
 J P PAT NO. 3200356
 K R PAT NO. 20-0433603
 C N PAT NO. ZL200620132661.0
 C H PAT NO. 696550
 T R PAT NO. TR 2007 02942 Y
 I T PAT NO. N.0000266731



INCHES

MODEL NO.	TYPE	L	l ₁	l ₂	d ₁	d ₂	T	SIZE RANGE	WEIGHT (KGS)
43.753.16.300	SCAT40 x UT16 - 3"	5.687	3	1.583	1.181	1.181	M10 x 1.5P	0.0156 ~ 0.375	1.16
43.753.16.400	SCAT40 x UT16 - 4"	6.687	4	2.175	1.181	1.181	M10 x 1.5P	0.0156 ~ 0.375	1.29
43.753.16.600	SCAT40 x UT16 - 6"	8.687	6	4.175	1.181	1.181	M10 x 1.5P	0.0156 ~ 0.375	1.51
43.753.20.300	SCAT40 x UT20 - 3"	5.687	3	1.583	1.378	1.417	M12 x 1.75P	0.0625 ~ 0.5	1.20
43.753.20.400	SCAT40 x UT20 - 4"	6.687	4	2.374	1.378	1.417	M12 x 1.75P	0.0625 ~ 0.5	1.38
43.753.20.600	SCAT40 x UT20 - 6"	8.687	6	4.374	1.378	1.417	M12 x 1.75P	0.0625 ~ 0.5	1.72
43.753.32.300	SCAT40 x UT32 - 3"	5.687	3	1.622	1.890	1.890	M16 x 2.0P	0.0625 ~ 0.625	1.24
43.753.32.400	SCAT40 x UT32 - 4"	6.687	4	2.622	1.890	1.890	M16 x 2.0P	0.0625 ~ 0.625	1.56
43.753.32.600	SCAT40 x UT32 - 6"	8.687	6	4.622	1.890	1.890	M16 x 2.0P	0.0625 ~ 0.625	2.21
44.753.16.300	SCAT50 x UT16 - 3"	7	3	1.425	1.180	1.181	M10 x 1.5P	0.0156 ~ 0.375	3.19
44.753.16.400	SCAT50 x UT16 - 4"	8	4	2.228	1.180	1.181	M10 x 1.5P	0.0156 ~ 0.375	3.27
44.753.16.600	SCAT50 x UT16 - 6"	10	6	4.065	1.180	1.181	M10 x 1.5P	0.0156 ~ 0.375	3.59
44.753.20.300	SCAT50 x UT20 - 3"	7	3	1.504	1.378	1.417	M12 x 1.75P	0.0625 ~ 0.5	3.25
44.753.20.400	SCAT50 x UT20 - 4"	8	4	2.425	1.378	1.417	M12 x 1.75P	0.0625 ~ 0.5	3.39
44.753.20.600	SCAT50 x UT20 - 6"	10	6	4.228	1.378	1.417	M12 x 1.75P	0.0625 ~ 0.5	3.72
44.753.32.300	SCAT50 x UT32 - 3"	7	3	1.504	1.890	1.890	M16 x 2.0P	0.0625 ~ 0.625	3.31
44.753.32.400	SCAT50 x UT32 - 4"	8	4	2.425	1.890	1.890	M16 x 2.0P	0.0625 ~ 0.625	3.60
44.753.32.600	SCAT50 x UT32 - 6"	10	6	4.425	1.890	1.890	M16 x 2.0P	0.0625 ~ 0.625	4.18

Product information:

- ▶ The pre-balance reaches G6.3 10,000 rpm. Higher balancing grade and revolution can be done upon request but additional charge is needed.
- ▶ AD+B type is available, please inform us when making an order.
- ▶ Use standard ER collets.

Standard Accessory: • NUT

Collet	Nut	Pull Stud	Preset Screw	Spanner
P.W-7~10	P.W-47	P.W-62	P.W-88	P.W-68~73



SCAT / ER COLLET CHUCK

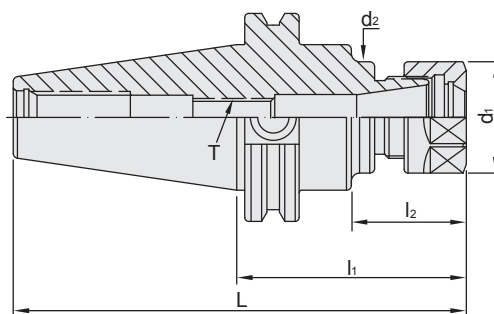


SCAT / ER 法蘭加厚型立銑刀夾頭

(DIN 15488)



T W PAT NO. M298033
T W PAT NO. M311791
J P PAT NO. 3128766
K R PAT NO. 20-0433603
C N PAT NO. ZL200620132661.0
C H PAT NO. 696550
T R PAT NO. TR 2007 02942 Y
I T PAT NO. N.0000266731



INCHES

MODEL NO.	TYPE	L	l ₁	l ₂	d ₁	d ₂	T	SIZE RANGE	WEIGHT (KGS)
43.122.16.276	SCAT40 x ER16A - 2.76 "	5.442	2.76	1.28	1.102	1.1	M10 x 1.5P	0.0156 ~ 0.375	1.50
43.122.16.400	SCAT40 x ER16A - 4 "	6.687	4	2.14	1.102	1.1	M10 x 1.5P	0.0156 ~ 0.375	1.10
43.122.16.600	SCAT40 x ER16A - 6 "	8.687	6	4.14	1.102	1.1	M10 x 1.5P	0.0156 ~ 0.375	1.55
43.122.16.800	SCAT40 x ER16A - 8 "	10.687	8	6.29	1.102	1.1	M10 x 1.5P	0.0156 ~ 0.375	1.85
43.122.20.276	SCAT40 x ER20A - 2.76 "	5.442	2.76	1.28	1.339	1.3	M12 x 1.75P	0.0625 ~ 0.5	1.25
43.122.20.400	SCAT40 x ER20A - 4 "	6.687	4	2.37	1.339	1.3	M12 x 1.75P	0.0625 ~ 0.5	1.65
43.122.20.600	SCAT40 x ER20A - 6 "	8.687	6	4.33	1.339	1.3	M12 x 1.75P	0.0625 ~ 0.5	1.85
43.122.25.276	SCAT40 x ER25 - 2.76 "	5.447	2.76	1.38	1.654	1.75	M16 x 2.0P	0.0625 ~ 0.625	1.35
43.122.25.400	SCAT40 x ER25 - 4 "	6.687	4	2.57	1.654	1.65	M16 x 2.0P	0.0625 ~ 0.625	1.70
43.122.25.600	SCAT40 x ER25 - 6 "	8.687	6	4.62	1.654	1.65	M16 x 2.0P	0.0625 ~ 0.625	2.25
43.122.25.800	SCAT40 x ER25 - 8 "	10.687	8	6.62	1.654	1.65	M16 x 2.0P	0.0625 ~ 0.625	2.55
43.122.32.276	SCAT40 x ER32 - 2.76 "	5.447	2.76	1.38	1.969	1.75	M16 x 2.0P	0.125 ~ 0.75	1.16
43.122.32.300	SCAT40 x ER32 - 3 "	5.687	3	1.62	1.969	1.75	M16 x 2.0P	0.125 ~ 0.75	1.50
43.122.32.400	SCAT40 x ER32 - 4 "	6.687	4	2.62	1.969	1.75	M16 x 2.0P	0.125 ~ 0.75	1.75
43.122.32.600	SCAT40 x ER32 - 6 "	8.687	6	5.21	1.969	1.75	M16 x 2.0P	0.125 ~ 0.75	2.15
43.122.32.800	SCAT40 x ER32 - 8 "	10.687	8	6.62	1.969	1.75	M16 x 2.0P	0.125 ~ 0.75	2.70
43.122.40.315	SCAT40 x ER40 - 3.15 "	5.837	3.15	1.72	2.48	1.75	M20 x 2.0P	0.125 ~ 1	1.25
43.122.40.400	SCAT40 x ER40 - 4 "	6.687	4	2.48	2.48	2.36	M20 x 2.0P	0.125 ~ 1	1.80
43.122.40.600	SCAT40 x ER40 - 6 "	8.687	6	4.48	2.48	2.36	M20 x 2.0P	0.125 ~ 1	3.00
43.122.50.400	SCAT40 x ER50 - 4 "	5.837	4	2.48	3.07	2.52	M24 x 2.0P	0.25 ~ 1.25	2.65

Product information:

- ▶ The pre-balance reaches G6.3 10,000 rpm. Higher balancing grade and revolution can be done upon request but additional charge is needed.
- ▶ AD+B type is available, please inform us when making an order.

Standard Accessory: • NUT

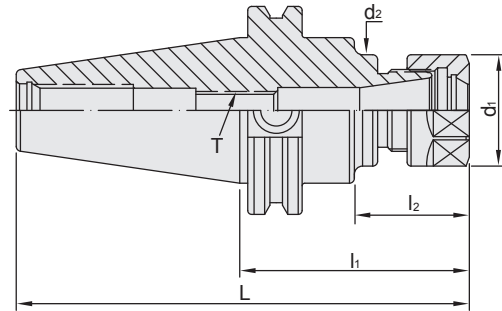
Collet	Nut	Pull Stud	Preset Screw	Spanner
P.W-7~28	P.W-48	P.W-62	P.W-88	P.W-68~71

SCAT / ER COLLET CHUCK



SCAT / ER 法蘭加厚型立銑刀夾頭

(DIN 15488)



T W PAT NO. M298033
 T W PAT NO. M311791
 J P PAT NO. 3128766
 K R PAT NO. 20-0433603
 C N PAT NO. ZL200620132661.0
 C H PAT NO. 696550
 T R PAT NO. TR 2007 02942 Y
 I T PAT NO. N.0000266731

INCHES

MODEL NO.	TYPE	L	l ₁	l ₂	d ₁	d ₂	T	SIZE RANGE	WEIGHT (KGS)
44.122.16.300	SCAT50 x ER16A - 3"	7	3	1.43	1.102	1.1	M10 x 1.5P	0.0156 ~ 0.375	4.05
44.122.16.400	SCAT50 x ER16A - 4"	8	4	2.07	1.102	1.1	M10 x 1.5P	0.0156 ~ 0.375	4.20
44.122.16.500	SCAT50 x ER16A - 5"	9	5	3.07	1.102	1.1	M10 x 1.5P	0.0156 ~ 0.375	4.30
44.122.16.600	SCAT50 x ER16A - 6"	10	6	4.29	1.102	1.1	M10 x 1.5P	0.0156 ~ 0.375	4.40
44.122.16.800	SCAT50 x ER16A - 8"	12	8	6.15	1.102	1.1	M10 x 1.5P	0.0156 ~ 0.375	4.50
44.122.20.400	SCAT50 x ER20A - 4"	8	4	2.07	1.339	1.34	M12 x 1.75P	0.0625 ~ 0.5	4.20
44.122.20.600	SCAT50 x ER20A - 6"	10	6	4.15	1.339	1.34	M12 x 1.75P	0.0625 ~ 0.5	4.45
44.122.20.800	SCAT50 x ER20A - 8"	12	8	6.07	1.339	1.34	M12 x 1.75P	0.0625 ~ 0.5	4.60
44.122.25.400	SCAT50 x ER25 - 4"	8	4	2.45	1.654	1.65	M16 x 2.0P	0.0625 ~ 0.625	4.15
44.122.25.600	SCAT50 x ER25 - 6"	10	6	3.92	1.654	1.65	M16 x 2.0P	0.0625 ~ 0.625	4.50
44.122.25.800	SCAT50 x ER25 - 8"	12	8	5.91	1.654	1.65	M16 x 2.0P	0.0625 ~ 0.625	4.70
44.122.32.400	SCAT50 x ER32 - 4"	8	4	2.15	1.969	1.96	M16 x 2.0P	0.125 ~ 0.75	4.35
44.122.32.600	SCAT50 x ER32 - 6"	10	6	4.15	1.969	1.96	M16 x 2.0P	0.125 ~ 0.75	4.60
44.122.32.800	SCAT50 x ER32 - 8"	12	8	6.07	1.969	1.96	M16 x 2.0P	0.125 ~ 0.75	4.90
44.122.40.400	SCAT50 x ER40 - 4"	8	4	2.35	2.48	2.36	M20 x 2.0P	0.125 ~ 1	4.25
44.122.40.600	SCAT50 x ER40 - 6"	10	6	4.43	2.48	2.36	M20 x 2.0P	0.125 ~ 1	4.80
44.122.40.800	SCAT50 x ER40 - 8"	12	8	6.43	2.48	2.36	M20 x 2.0P	0.125 ~ 1	5.10
44.122.50.400	SCAT50 x ER50 - 4"	8	4	2.62	3.07	2.75	M24 x 2.0P	0.25 ~ 1.25	4.85
44.122.50.600	SCAT50 x ER50 - 6"	10	6	4.62	3.07	2.75	M24 x 2.0P	0.25 ~ 1.25	5.55

Product information:

- ▶ The pre-balance reaches G6.3 10,000 rpm. Higher balancing grade and revolution can be done upon request but additional charge is needed.
- ▶ AD+B type is available, please inform us when making an order.

Standard Accessory: • NUT

Collet	Nut	Pull Stud	Preset Screw	Spanner
P.W-7~28	P.W-48	P.W-62	P.W-88	P.W-68~71



SCAT / ER COLLET CHUCK

M TYPE

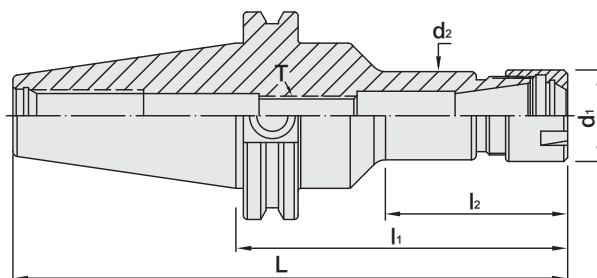


M 型 SCAT / ER 法蘭加厚型立銑刀夾頭

(DIN 15488)



T W PAT NO. M298033
 T W PAT NO. M311791
 J P PAT NO. 3128766
 K R PAT NO. 20-0433603
 C N PAT NO. ZL200620132661.0
 C H PAT NO. 696550
 T R PAT NO. TR 2007 02942 Y
 I T PAT NO. N.0000266731



INCHES

MODEL NO.	TYPE	L	l ₁	l ₂	d ₁	d ₂	T	SIZE RANGE	WEIGHT (KGS)
43.123.11.275	SCAT40 x ER11M - 2.75"	5.437	2.75	1.175	0.63	0.59	M6 x 1.0P	0.0625 ~ 0.25	1.10
43.123.11.400	SCAT40 x ER11M - 4"	6.687	4	2.228	0.63	0.59	M6 x 1.0P	0.0625 ~ 0.25	1.20
43.123.16.276	SCAT40 x ER16M - 2.76"	5.447	2.76	1.322	0.87	0.83	M10 x 1.5P	0.0625 ~ 0.375	1.20
43.123.16.400	SCAT40 x ER16M - 4"	6.687	4	2.425	0.87	0.83	M10 x 1.5P	0.0625 ~ 0.375	1.30
43.123.20.276	SCAT40 x ER20M - 2.76"	5.447	2.76	1.323	1.102	1.06	M12 x 1.75P	0.0625 ~ 0.5	1.20
43.123.20.400	SCAT40 x ER20M - 4"	6.687	4	2.197	1.102	1.06	M12 x 1.75P	0.0625 ~ 0.5	1.50
44.123.16.400	SCAT50 x ER16M - 4"	8	4	1.927	0.87	0.83	M10 x 1.5P	0.0625 ~ 0.375	3.90
44.123.16.600	SCAT50 x ER16M - 6"	10	6	4.009	0.87	0.83	M10 x 1.5P	0.0625 ~ 0.375	4.00
44.123.20.400	SCAT50 x ER20M - 4"	8	4	2.127	1.102	1.06	M12 x 1.75P	0.0625 ~ 0.5	4.20
44.123.20.600	SCAT50 x ER20M - 6"	10	6	4.127	1.102	1.06	M12 x 1.75P	0.0625 ~ 0.5	5.20

Product information:

- ▶ The pre-balance reaches G6.3 10,000 rpm. Higher balancing grade and revolution can be done upon request but additional charge is needed.
- ▶ AD+B type is available, please inform us when making an order.

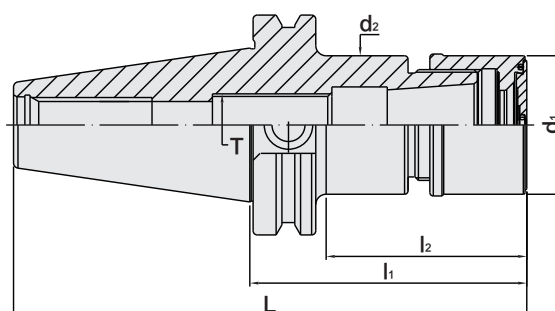
Standard Accessory: • NUT

Collet	Nut	Pull Stud	Preset Screw	Spanner
P.W-7~28	P.W-49	P.W-62	P.W-88	P.W-68~71

SCAT / SKX COLLET CHUCK



SCAT / SKX 法蘭加厚型立銑刀夾頭



INCHES

MODEL NO.	TYPE	L	l ₁	l ₂	d ₁	d ₂	T	SIZE RANGE	WEIGHT (KGS)
43.790.06.350	SCAT40 x SKX6 - 3.5"	6.187	3.5	2	0.709	0.709	M8 x 1.25P	0.125 ~ 0.25	1.20
43.790.06.475	SCAT40 x SKX6 - 4.75"	7.437	4.75	2.89	0.709	0.709	M8 x 1.25P	0.125 ~ 0.25	1.50
43.790.06.600	SCAT40 x SKX6 - 6"	8.687	6	4.14	0.709	0.709	M8 x 1.25P	0.125 ~ 0.25	1.60
43.790.10.350	SCAT40 x SKX10 - 3.5"	6.187	3.5	2	1.181	1.181	M12 x 1.75P	0.125 ~ 0.375	1.30
43.790.10.475	SCAT40 x SKX10 - 4.75"	7.437	4.75	3.25	1.181	1.181	M12 x 1.75P	0.125 ~ 0.375	1.50
43.790.10.600	SCAT40 x SKX10 - 6"	8.687	6	4.5	1.181	1.181	M12 x 1.75P	0.125 ~ 0.375	1.70
43.790.10.709	SCAT40 x SKX10 - 7.09"	9.777	7.09	5.59	1.181	1.181	M12 x 1.75P	0.125 ~ 0.375	1.80
43.790.13.350	SCAT40 x SKX13 - 3.5"	6.187	3.5	2.004	1.299	1.299	M12 x 1.75P	0.125 ~ 0.5	1.05
43.790.13.400	SCAT40 x SKX13 - 4"	6.687	4	2.504	1.299	1.299	M12 x 1.75P	0.125 ~ 0.5	1.65
43.790.16.350	SCAT40 x SKX16 - 3.5"	6.187	3.5	2.03	1.575	1.575	M18 x 1.5P	0.125 ~ 0.625	1.60
43.790.16.475	SCAT40 x SKX16 - 4.75"	7.437	4.75	3.28	1.575	1.575	M18 x 1.5P	0.125 ~ 0.625	1.80
43.790.16.600	SCAT40 x SKX16 - 6"	8.687	6	4.53	1.575	1.575	M18 x 1.5P	0.125 ~ 0.625	2.00
43.790.16.709	SCAT40 x SKX16 - 7.09"	9.777	7.09	5.62	1.575	1.575	M18 x 1.5P	0.125 ~ 0.625	2.20
43.790.20.350	SCAT40 x SKX20 - 3.5"	6.187	3.5	1.71	1.909	1.909	M22 x 1.5P	0.125 ~ 0.75	1.70
43.790.20.475	SCAT40 x SKX20 - 4.75"	7.437	4.75	2.96	1.909	1.909	M22 x 1.5P	0.125 ~ 0.75	2.00
43.790.20.600	SCAT40 x SKX20 - 6"	8.687	6	4.21	1.909	1.909	M22 x 1.5P	0.125 ~ 0.75	2.20
43.790.25.350	SCAT40 x SKX25 - 3.5"	6.187	3.5	1.71	2.165	2.165	M28 x 2.0P	0.125 ~ 1	1.90
43.790.25.475	SCAT40 x SKX25 - 4.75"	7.437	4.75	2.96	2.165	2.165	M28 x 2.0P	0.125 ~ 1	2.10
43.790.25.600	SCAT40 x SKX25 - 6"	8.687	6	4.21	2.165	2.165	M28 x 2.0P	0.125 ~ 1	2.30

Features:

- ▶ SKX sealed cap is optional. Please order SKX sealed cap additionally.
- ▶ With the design of SKX sealed cap, coolant pressure capable up to 70 bar.
- ▶ Used with coolant-through tools.
- ▶ Balance: G2.5 25,000rpm.

Standard Accessory: • NUT

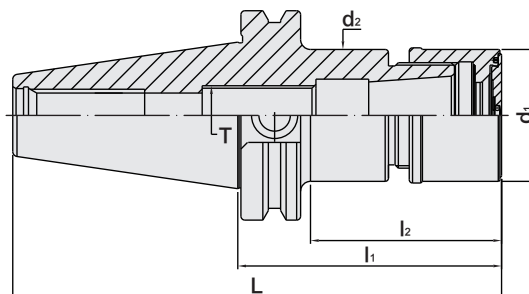
Collet	Nut	Sealed Cap	Pull Stud	Preset Screw	Spanner	Sealed Cap Spanner
P.W-29	P.W-55	P.W-56	P.W-62	P.W-88	P.W-68~73	P.W-72



SCAT / SKX COLLET CHUCK



SCAT / SKX 法蘭加厚型立銑刀夾頭



INCHES

MODEL NO.	TYPE	L	l ₁	l ₂	d ₁	d ₂	T	SIZE RANGE	WEIGHT (KGS)
44.790.06.413	SCAT50 x SKX6 - 4.13"	8.13	4.13	2.27	0.709	0.709	M8 x 1.25P	0.125 ~ 0.25	3.90
44.790.06.650	SCAT50 x SKX6 - 6.5"	10.5	6.5	4.64	0.709	0.709	M8 x 1.25P	0.125 ~ 0.25	4.10
44.790.06.768	SCAT50 x SKX6 - 7.68"	11.68	7.68	5.82	0.709	0.709	M8 x 1.25P	0.125 ~ 0.25	4.50
44.790.10.413	SCAT50 x SKX10 - 4.13"	8.13	4.13	2.55	1.181	1.181	M12 x 1.75P	0.125 ~ 0.375	4.30
44.790.10.650	SCAT50 x SKX10 - 6.5"	10.5	6.5	4.92	1.181	1.181	M12 x 1.75P	0.125 ~ 0.375	4.70
44.790.10.768	SCAT50 x SKX10 - 7.68"	11.68	7.68	6.1	1.181	1.181	M12 x 1.75P	0.125 ~ 0.375	4.80
44.790.10.886	SCAT50 x SKX10 - 8.86"	12.86	8.86	7.28	1.181	1.181	M12 x 1.75P	0.125 ~ 0.375	4.90
44.790.13.400	SCAT50 x SKX13 - 4"	8	4	2.425	1.299	1.299	M12 x 1.75P	0.125 ~ 0.5	3.80
44.790.13.450	SCAT50 x SKX13 - 4.5"	8.5	4.5	2.925	1.299	1.299	M12 x 1.75P	0.125 ~ 0.5	4.00
44.790.16.413	SCAT50 x SKX16 - 4.13"	8.13	4.13	2.55	1.575	1.575	M18 x 1.5P	0.125 ~ 0.625	4.80
44.790.16.650	SCAT50 x SKX16 - 6.5"	10.5	6.5	4.92	1.575	1.575	M18 x 1.5P	0.125 ~ 0.625	5.20
44.790.16.886	SCAT50 x SKX16 - 8.86"	12.86	8.86	7.28	1.575	1.575	M18 x 1.5P	0.125 ~ 0.625	5.70
44.790.20.413	SCAT50 x SKX20 - 4.13"	8.13	4.13	2.55	1.909	1.909	M22 x 1.5P	0.125 ~ 0.75	4.40
44.790.20.650	SCAT50 x SKX20 - 6.5"	10.5	6.5	4.92	1.909	1.909	M22 x 1.5P	0.125 ~ 0.75	5.10
44.790.20.886	SCAT50 x SKX20 - 8.86"	12.86	8.86	7.28	1.909	1.909	M22 x 1.5P	0.125 ~ 0.75	5.70
44.790.25.413	SCAT50 x SKX25 - 4.13"	8.13	4.13	2.55	2.165	2.165	M28 x 2.0P	0.125 ~ 1	5.30
44.790.25.650	SCAT50 x SKX25 - 6.5"	10.5	6.5	4.92	2.165	2.165	M28 x 2.0P	0.125 ~ 1	6.00
44.790.25.886	SCAT50 x SKX25 - 8.86"	12.86	8.86	7.28	2.165	2.165	M28 x 2.0P	0.125 ~ 1	6.30

Features:

- ▶ SKX sealed cap is optional. Please order SKX sealed cap additionally.
- ▶ With the design of SKX sealed cap, coolant pressure capable up to 70 bar.
- ▶ Used with coolant-through tools.
- ▶ Balance: G2.5 25,000rpm.

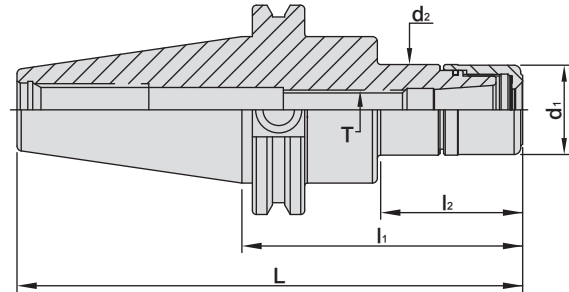
Standard Accessory: • NUT

Collet	Nut	Sealed Cap	Pull Stud	Preset Screw	Spanner	Sealed Cap Spanner
P.W-29	P.W-55	P.W-56	P.W-62	P.W-88	P.W-68~73	P.W-72

SCAT / SK3 COLLET CHUCK



SCAT / SK3 高速機專用夾頭



INCHES

MODEL NO.	TYPE	L	l ₁	l ₂	d ₁	d ₂	T	SIZE RANGE	WEIGHT (KGS)
43.763.06.350	SCAT40 x SK306 - 3.5"	6.187	3.5	1.438	0.768	0.768	M8 x 1.25P	0.0625 ~ 0.1875	1.05
43.763.06.400	SCAT40 x SK306 - 4"	6.687	4	1.938	0.768	0.768	M8 x 1.25P	0.0625 ~ 0.1875	1.65
43.763.10.350	SCAT40 x SK310 - 3.5"	6.187	3.5	1.627	1.083	1.083	M12 x 1.75P	0.125 ~ 0.375	1.05
43.763.10.400	SCAT40 x SK310 - 4"	6.687	4	2.127	1.083	1.083	M12 x 1.75P	0.125 ~ 0.375	1.65
43.763.13.350	SCAT40 x SK313 - 3.5"	6.187	3.5	2.004	1.299	1.299	M12 x 1.75P	0.125 ~ 0.5	1.05
43.763.13.400	SCAT40 x SK313 - 4"	6.687	4	2.504	1.299	1.299	M12 x 1.75P	0.125 ~ 0.5	1.65
43.763.16.350	SCAT40 x SK316 - 3.5"	6.187	3.5	2.034	1.575	1.575	M18 x 1.5P	0.125 ~ 0.625	1.35
43.763.16.400	SCAT40 x SK316 - 4"	6.687	4	2.534	1.575	1.575	M18 x 1.5P	0.125 ~ 0.625	2.10
44.763.06.350	SCAT50 x SK306 - 3.5"	7.5	3.5	1.728	0.768	0.768	M8 x 1.25P	0.0625 ~ 0.1875	3.60
44.763.06.400	SCAT50 x SK306 - 4"	8	4	2.228	0.768	0.768	M8 x 1.25P	0.0625 ~ 0.1875	4.00
44.763.10.400	SCAT50 x SK310 - 4"	8	4	2.228	1.083	1.083	M12 x 1.75P	0.125 ~ 0.375	3.80
44.763.10.450	SCAT50 x SK310 - 4.5"	8.5	4.5	2.115	1.083	1.083	M12 x 1.75P	0.125 ~ 0.375	4.00
44.763.13.400	SCAT50 x SK313 - 4"	8	4	2.425	1.299	1.299	M12 x 1.75P	0.125 ~ 0.5	3.80
44.763.13.450	SCAT50 x SK313 - 4.5"	8.5	4.5	2.925	1.299	1.299	M12 x 1.75P	0.125 ~ 0.5	4.00
44.763.16.400	SCAT50 x SK316 - 4"	8	4	1.871	1.575	1.575	M18 x 1.5P	0.125 ~ 0.625	4.00
44.763.16.450	SCAT50 x SK316 - 4.5"	8.5	4.5	2.371	1.575	1.575	M18 x 1.5P	0.1250 ~ 0.625	4.15

Product information:

- ▶ Balance: G2.5 25,000 rpm. Higher balancing grade and revolution can be done upon request but additional charge is needed.
- ▶ AD+B type is available, please inform us when making an order.

Standard Accessory: • NUT

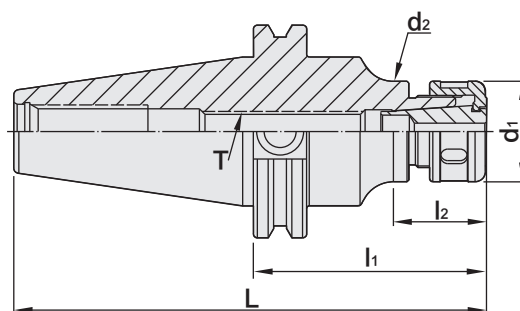
Collet	Nut	Pull Stud	Preset Screw	Spanner
P.W-29~32	P.W-52	P.W-62	P.W-88	P.W-68~73



SCAT / SKS COLLET CHUCK

Dual
DRIVE+5 μ m

SCAT / SKS 法蘭加厚型高速機專用夾頭



INCHES

MODEL NO.	TYPE	L	l ₁	l ₂	d ₁	d ₂	T	SIZE RANGE	WEIGHT (KGS)
43.658.06.350	SCAT40 x SKS6 - 3.5"	6.187	3.5	1.594	0.708	0.708	M8 x 1.25P	0.125 ~ 0.25	1.05
43.658.06.400	SCAT40 x SKS6 - 4"	6.687	4	2.094	0.708	0.708	M8 x 1.25P	0.125 ~ 0.25	1.65
43.658.10.350	SCAT40 x SKS10 - 3.5"	6.187	3.5	1.703	1.181	1.086	M12 x 1.75P	0.125 ~ 0.375	1.05
43.658.10.400	SCAT40 x SKS10 - 4"	6.687	4	2.203	1.181	1.086	M12 x 1.75P	0.125 ~ 0.375	1.65
43.658.13.350	SCAT40 x SKS13 - 3.5"	6.187	3.5	2.004	1.299	1.299	M12 x 1.75P	0.125 ~ 0.5	1.05
43.658.13.400	SCAT40 x SKS13 - 4"	6.687	4	2.504	1.299	1.299	M12 x 1.75P	0.125 ~ 0.5	1.65
43.658.16.350	SCAT40 x SKS16 - 3.5"	6.187	3.5	2.034	1.574	1.575	M18 x 1.5P	0.125 ~ 0.625	1.35
43.658.16.400	SCAT40 x SKS16 - 4"	6.687	4	2.534	1.574	1.575	M18 x 1.5P	0.125 ~ 0.625	2.10
43.658.20.350	SCAT40 x SKS20 - 3.5"	6.187	3.5	2.042	1.909	1.909	M22 x 1.5P	0.125 ~ 0.75	1.35
43.658.20.400	SCAT40 x SKS20 - 4"	6.687	4	2.542	1.909	1.909	M22 x 1.5P	0.125 ~ 0.75	2.20
43.658.25.350	SCAT40 x SKS25 - 3.5"	6.187	3.5	2.122	2.165	2.165	M28 x 2.0P	0.125 ~ 1	1.35
43.658.25.400	SCAT40 x SKS25 - 4"	6.687	4	2.622	2.165	2.165	M28 x 2.0P	0.125 ~ 1	2.20
44.658.06.350	SCAT50 x SKS6 - 3.5"	7.5	3.5	1.728	0.708	0.708	M8 x 1.25P	0.125 ~ 0.25	3.60
44.658.06.400	SCAT50 x SKS6 - 4"	8	4	2.228	0.708	0.708	M8 x 1.25P	0.125 ~ 0.25	4.00
44.658.10.400	SCAT50 x SKS10 - 4"	8	4	2.228	1.181	1.181	M12 x 1.75P	0.125 ~ 0.375	3.80
44.658.10.450	SCAT50 x SKS10 - 4.5"	8.5	4.5	2.408	1.181	1.181	M12 x 1.75P	0.125 ~ 0.375	4.00
44.658.13.400	SCAT50 x SKS13 - 4"	8	4	2.425	1.299	1.299	M12 x 1.75P	0.125 ~ 0.5	3.80
44.658.13.450	SCAT50 x SKS13 - 4.5"	8.5	4.5	2.925	1.299	1.299	M12 x 1.75P	0.125 ~ 0.5	4.00
44.658.16.400	SCAT50 x SKS16 - 4"	8	4	2.056	1.575	1.575	M18 x 1.5P	0.125 ~ 0.625	4.00
44.658.16.450	SCAT50 x SKS16 - 4.5"	8.5	4.5	2.556	1.575	1.575	M18 x 1.5P	0.125 ~ 0.625	4.15
44.658.20.400	SCAT50 x SKS20 - 4"	8	4	2.504	1.909	1.909	M22 x 1.5P	0.125 ~ 0.75	4.00
44.658.20.450	SCAT50 x SKS20 - 4.5"	8.5	4.5	3.004	1.909	1.909	M22 x 1.5P	0.125 ~ 0.75	4.15
44.658.25.400	SCAT50 x SKS25 - 4"	8	4	2.167	2.165	2.165	M28 x 2.0P	0.125 ~ 1	4.20
44.658.25.450	SCAT50 x SKS25 - 4.5"	8.5	4.5	2.667	2.165	2.165	M28 x 2.0P	0.125 ~ 1	4.40

Product information:

- ▶ Balance: G2.5 25,000 rpm. Higher balancing grade and revolution can be done upon request but additional charge is needed.
- ▶ AD+B type is available, please inform us when making an order.

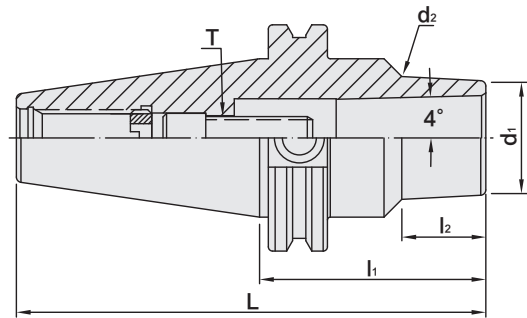
Standard Accessory: • NUT

Collet	Nut	Pull Stud	Preset Screw	Spanner
P.W-29~32	P.W-53~54	P.W-62	P.W-88	P.W-68~73

SCAT / SBL SLIM-FIT COLLET CHUCK



SCAT / SBL 法蘭加厚型後拉式立銑刀夾頭



T W PAT NO. M274178

INCHES

MODEL NO.	TYPE	L	l ₁	l ₂	d ₁	d ₂	T	RECOMMENDED TORQUE		SIZE RANGE	WEIGHT (KGS)
								N.m	1bf-ft		
43.648.06.300	SCAT40 x SBL6 - 3"	5.687	3	1.09	0.55	0.65	M6 x 1.0P	12	9	0.125 ~ 0.25	1.00
43.648.06.400	SCAT40 x SBL6 - 4"	6.687	4	2.12	0.55	0.74	M6 x 1.0P	12	9	0.125 ~ 0.25	1.25
43.648.06.600	SCAT40 x SBL6 - 6"	8.687	6	4.17	0.55	0.92	M6 x 1.0P	12	9	0.125 ~ 0.25	1.20
43.648.08.400	SCAT40 x SBL8 - 4"	6.687	4	2.43	0.787	1.03	M8 x 1.25P	29	21	0.125 ~ 0.3125	1.13
43.648.08.500	SCAT40 x SBL8 - 5"	7.687	5	3.43	0.787	1.14	M8 x 1.25P	29	21	0.125 ~ 0.3125	1.24
43.648.08.600	SCAT40 x SBL8 - 6"	8.687	6	4.43	0.787	1.25	M8 x 1.25P	29	21	0.125 ~ 0.3125	1.39
43.648.12.250	SCAT40 x SBL12 - 2.5"	5.187	2.5	0.82	1.02	1.15	M10 x 1.5P	45	33	0.125 ~ 0.5	1.45
43.648.12.400	SCAT40 x SBL12 - 4"	6.687	4	2.23	1.02	1.26	M10 x 1.5P	45	33	0.125 ~ 0.5	1.20
43.648.12.600	SCAT40 x SBL12 - 6"	8.687	6	4.49	1.02	1.49	M10 x 1.5P	45	33	0.125 ~ 0.5	1.45
43.648.20.250	SCAT40 x SBL20 - 2.5"	5.187	2.5	0.98	1.38	1.46	M12 x 1.75P	60	44	0.125 ~ 0.75	1.20
43.648.20.400	SCAT40 x SBL20 - 4"	6.687	4	2.55	1.37	1.6	M12 x 1.75P	60	44	0.125 ~ 0.75	1.60
43.648.20.600	SCAT40 x SBL20 - 6"	8.687	6	4.62	1.37	-	M12 x 1.75P	60	44	0.125 ~ 0.75	1.50
43.648.25.325	SCAT40 x SBL25 - 3.25"	5.937	3.25	1.86	1.57	1.73	M16 x 2.0P	90	66	0.125 ~ 1	1.40
43.648.25.400	SCAT40 x SBL25 - 4"	6.687	4	2.61	1.57	1.75	M16 x 2.0P	90	66	0.125 ~ 1	1.60
44.648.06.350	SCAT50 x SBL6 - 3.5"	7.5	3.5	1.56	0.55	0.71	M6 x 1.0P	12	9	0.125 ~ 0.25	1.70
44.648.06.450	SCAT50 x SBL6 - 4.5"	8.5	4.5	2.38	0.55	0.8	M6 x 1.0P	12	9	0.125 ~ 0.25	1.50
44.648.06.600	SCAT50 x SBL6 - 6"	10	6	3.96	0.55	0.97	M6 x 1.0P	12	9	0.125 ~ 0.25	1.70
44.648.08.400	SCAT50 x SBL8 - 4"	8	4	2.24	0.787	1.01	M8 x 1.25P	29	21	0.125 ~ 0.3125	3.23
44.648.08.500	SCAT50 x SBL8 - 5"	9	5	3.25	0.787	1.12	M8 x 1.25P	29	21	0.125 ~ 0.3125	3.36
44.648.08.600	SCAT50 x SBL8 - 6"	10	6	4.24	0.787	1.23	M8 x 1.25P	29	21	0.125 ~ 0.3125	3.51
44.648.12.250	SCAT50 x SBL12 - 2.5"	6.5	2.5	0.93	1.02	1.11	M10 x 1.5P	45	33	0.125 ~ 0.5	4.00
44.648.12.450	SCAT50 x SBL12 - 4.5"	8.5	4.5	2.75	1.02	1.27	M10 x 1.5P	45	33	0.125 ~ 0.5	4.10
44.648.12.600	SCAT50 x SBL12 - 6"	10	6	4.25	1.02	1.4	M10 x 1.5P	45	33	0.125 ~ 0.5	4.20
44.648.20.250	SCAT50 x SBL20 - 2.5"	6.5	2.5	0.75	1.37	1.44	M12 x 1.75P	60	44	0.125 ~ 0.75	4.30
44.648.20.450	SCAT50 x SBL20 - 4.5"	8.5	4.5	2.75	1.37	1.62	M12 x 1.75P	60	44	0.125 ~ 0.75	4.60
44.648.20.600	SCAT50 x SBL20 - 6"	10	6	4.12	1.37	1.74	M12 x 1.75P	60	44	0.125 ~ 0.75	4.70
44.648.25.275	SCAT50 x SBL25 - 2.75"	6.75	2.75	1.33	1.69	1.69	M16 x 2.0P	90	66	0.125 ~ 1	4.40
44.648.25.450	SCAT50 x SBL25 - 4.5"	8.5	4.5	3.06	1.84	1.84	M16 x 2.0P	90	66	0.125 ~ 1	4.60

Product information:

- ▶ Balance: G2.5 25,000 rpm. Higher balancing grade and revolution can be done upon request but additional charge is needed.
- ▶ AD+B type is available, please inform us when making an order.

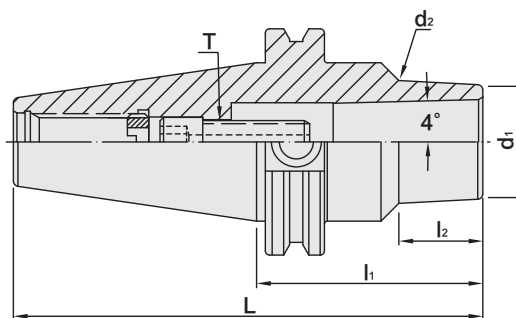
Collet	Pull Stud	SCREW	Spanner
P.W-33	P.W-62	P.W-91	P.W-72



SCAT / SBLC SLIM-FIT COLLET CHUCK

Dual
DRIVE+

SCAT / SBLC 法蘭加厚型後拉式立銑刀夾頭



T W PAT NO. M274178

INCHES

MODEL NO.	TYPE	L	l ₁	l ₂	d ₁	d ₂	T	RECOMMENDED TORQUE		SIZE RANGE	WEIGHT (KGS)
								N.m	1bf-ft		
43.648C.06.300	SCAT40 x SBLC6 - 3"	5.687	3	1.09	0.55	0.65	M6 x 1.0P	12	9	0.125 ~ 0.25	1.00
43.648C.06.400	SCAT40 x SBLC6 - 4"	6.687	4	2.12	0.55	0.74	M6 x 1.0P	12	9	0.125 ~ 0.25	1.25
43.648C.06.600	SCAT40 x SBLC6 - 6"	8.687	6	4.17	0.55	0.92	M6 x 1.0P	12	9	0.125 ~ 0.25	1.20
43.648C.08.400	SCAT40 x SBLC8 - 4"	6.687	4	2.43	0.787	1.03	M8 x 1.25P	29	21	0.125 ~ 0.3125	1.13
43.648C.08.500	SCAT40 x SBLC8 - 5"	7.687	5	3.43	0.787	1.14	M8 x 1.25P	29	21	0.125 ~ 0.3125	1.24
43.648C.08.600	SCAT40 x SBLC8 - 6"	8.687	6	4.43	0.787	1.25	M8 x 1.25P	29	21	0.125 ~ 0.3125	1.39
43.648C.12.250	SCAT40 x SBLC12 - 2.5"	5.187	2.5	0.82	1.02	1.15	M10 x 1.5P	45	33	0.125 ~ 0.5	1.45
43.648C.12.400	SCAT40 x SBLC12 - 4"	6.687	4	2.23	1.02	1.26	M10 x 1.5P	45	33	0.125 ~ 0.5	1.20
43.648C.12.600	SCAT40 x SBLC12 - 6"	8.687	6	4.49	1.02	1.49	M10 x 1.5P	45	33	0.125 ~ 0.5	1.45
43.648C.20.250	SCAT40 x SBLC20 - 2.5"	5.187	2.5	0.98	1.38	1.46	M12 x 1.75P	60	44	0.125 ~ 0.75	1.20
43.648C.20.400	SCAT40 x SBLC20 - 4"	6.687	4	2.55	1.37	1.6	M12 x 1.75P	60	44	0.125 ~ 0.75	1.60
43.648C.20.600	SCAT40 x SBLC20 - 6"	8.687	6	4.62	1.37	-	M12 x 1.75P	60	44	0.125 ~ 0.75	1.50
43.648C.25.325	SCAT40 x SBLC25 - 3.25"	5.937	3.25	1.86	1.57	1.73	M16 x 2.0P	90	66	0.125 ~ 1	1.40
43.648C.25.400	SCAT40 x SBLC25 - 4"	6.687	4	2.61	1.57	1.75	M16 x 2.0P	90	66	0.125 ~ 1	1.60
44.648C.06.350	SCAT50 x SBLC6 - 3.5"	7.5	3.5	1.56	0.55	0.71	M6 x 1.0P	12	9	0.125 ~ 0.25	1.70
44.648C.06.450	SCAT50 x SBLC6 - 4.5"	8.5	4.5	2.38	0.55	0.8	M6 x 1.0P	12	9	0.125 ~ 0.25	1.50
44.648C.06.600	SCAT50 x SBLC6 - 6"	10	6	3.96	0.55	0.97	M6 x 1.0P	12	9	0.125 ~ 0.25	1.70
44.648C.08.400	SCAT50 x SBLC8 - 4"	8	4	2.24	0.787	1.01	M8 x 1.25P	29	21	0.125 ~ 0.3125	3.23
44.648C.08.500	SCAT50 x SBLC8 - 5"	9	5	3.25	0.787	1.12	M8 x 1.25P	29	21	0.125 ~ 0.3125	3.36
44.648C.08.600	SCAT50 x SBLC8 - 6"	10	6	4.24	0.787	1.23	M8 x 1.25P	29	21	0.125 ~ 0.3125	3.51
44.648C.12.250	SCAT50 x SBLC12 - 2.5"	6.5	2.5	0.93	1.02	1.11	M10 x 1.5P	45	33	0.125 ~ 0.5	4.00
44.648C.12.450	SCAT50 x SBLC12 - 4.5"	8.5	4.5	2.75	1.02	1.27	M10 x 1.5P	45	33	0.125 ~ 0.5	4.10
44.648C.12.600	SCAT50 x SBLC12 - 6"	10	6	4.25	1.02	1.4	M10 x 1.5P	45	33	0.125 ~ 0.5	4.20
44.648C.20.250	SCAT50 x SBLC20 - 2.5"	6.5	2.5	0.75	1.37	1.44	M12 x 1.75P	60	44	0.125 ~ 0.75	4.30
44.648C.20.450	SCAT50 x SBLC20 - 4.5"	8.5	4.5	2.75	1.37	1.62	M12 x 1.75P	60	44	0.125 ~ 0.75	4.60
44.648C.20.600	SCAT50 x SBLC20 - 6"	10	6	4.12	1.37	1.74	M12 x 1.75P	60	44	0.125 ~ 0.75	4.70
44.648C.25.275	SCAT50 x SBLC25 - 2.75"	6.75	2.75	1.33	1.69	1.69	M16 x 2.0P	90	66	0.125 ~ 1	4.40
44.648C.25.450	SCAT50 x SBLC25 - 4.5"	8.5	4.5	3.06	1.84	1.84	M16 x 2.0P	90	66	0.125 ~ 1	4.60

Product information:

- ▶ Balance: G2.5 25,000 rpm. Higher balancing grade and revolution can be done upon request but additional charge is needed.
- ▶ AD+B type is available, please inform us when making an order.
- ▶ Used with SLC sealed collet and coolant through cutters.

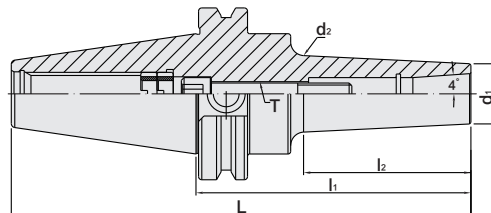
Standard Accessory: • SPANNER

Collet	Pull Stud	Screw	Spanner
P.W-34	P.W-62	P.W-91	P.W-72

SCAT / EBL SLIM-FIT COLLET CHUCK



SCAT / EBL 法蘭加厚型後拉式刀桿



INCHES

MODEL NO.	TYPE	L	l ₁	l ₂	d ₁	d ₂	T	TORQUE		SIZE RANGE	WEIGHT (KGS)
								N.m	lbf-ft		
43.277.06.300	SCAT40 x EBL6 - 3"	5.687	3	1.43	0.75	0.89	M6 x 1.0P	12	9	0.125 ~ 0.25	1.21
43.277.06.400	SCAT40 x EBL6 - 4"	6.687	4	2.43	0.75	0.98	M6 x 1.0P	12	9	0.125 ~ 0.25	1.21
43.277.06.600	SCAT40 x EBL6 - 6"	8.687	6	4.43	0.75	1.18	M6 x 1.0P	12	9	0.125 ~ 0.25	1.48
43.277.08.300	SCAT40 x EBL8 - 3"	5.687	3	1.43	0.875	1.01	M8 x 1.25P	29	21	0.125 ~ 0.375	1.08
43.277.08.400	SCAT40 x EBL8 - 4"	6.687	4	2.43	0.875	1.11	M8 x 1.25P	29	21	0.125 ~ 0.375	1.25
43.277.08.600	SCAT40 x EBL8 - 6"	8.687	6	4.50	0.875	1.31	M8 x 1.25P	29	21	0.125 ~ 0.375	1.50
44.277.06.300	SCAT50 x EBL6 - 3"	7	3	1.24	0.75	0.87	M6 x 1.0P	12	9	0.125 ~ 0.25	3.19
44.277.06.400	SCAT50 x EBL6 - 4"	8	4	1.24	0.75	0.96	M6 x 1.0P	12	9	0.125 ~ 0.25	3.31
44.277.06.600	SCAT50 x EBL6 - 6"	10	6	4.24	0.75	1.16	M6 x 1.0P	12	9	0.125 ~ 0.25	3.53
44.277.08.300	SCAT50 x EBL8 - 3"	7	3	1.24	0.875	0.96	M8 x 1.25P	29	21	0.125 ~ 0.375	3.26
44.277.08.400	SCAT50 x EBL8 - 4"	8	4	2.24	0.875	1.092	M8 x 1.25P	29	21	0.125 ~ 0.375	3.33
44.277.08.600	SCAT50 x EBL8 - 6"	10	6	4.24	0.875	1.29	M8 x 1.25P	29	21	0.125 ~ 0.375	3.53



▶ SBL



▶ EBL

Features:

- ▶ The extended length of EBL collet and special longer inner hole design of holder allow deeper tool insertion and shorter tool overhanging length, improving the machining stability.
- ▶ The optimized design of thicker neck improves the machining rigidity and eliminates micro-vibration.
- ▶ Use with CTS to achieve better dustproof ability and chip evacuation. Capable of coolant pressure up to 25 bar.

Product information:

- ▶ AD+B type is available, please inform us when making an order.
- ▶ Balance: G2.5 25,000rpm.

Standard Accessory: • ALLEN WRENCH • TORX WRENCH

Collet	Sealed Collet	Pull Stud	Spanner
P.W-35	P.W-36	P.W-62	P.72



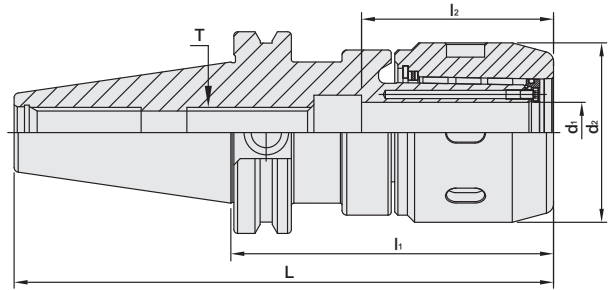
SCAT / MLD MULTI - LOCK MILLING CHUCK



SCAT / MLD 法蘭加厚型直式筒夾 銑床夾頭



台灣精品 2007
TAIWAN EXCELLENCE



T W PAT NO. M447277
T W PAT NO. M430337
T W PAT NO. M451185
C N PAT NO. ZL201220749784.4
C H PAT NO. ZL201220749942.6

INCHES

MODEL NO.	TYPE	L	l ₁	l ₂	d ₁	d ₂	T	WEIGHT (KGS)
43.463G.58.335	SCAT40 x MLD1/2" - 3.35"	6.03	3.35	1.84	0.5	1.654	M12 x 1.75P	1.80
43.463G.61.350	SCAT40 x MLD5/8" - 3.5"	6.187	3.5	2.23	0.625	1.889	M12 x 1.75P	1.90
43.463G.64.400	SCAT40 x MLD3/4" - 4"	6.687	4	2.34	0.75	2.224	5/8" - 11	1.90
43.463G.64.600	SCAT40 x MLD3/4" - 6"	8.687	6	2.34	0.75	2.224	5/8" - 11	2.10
43.463G.68.400	SCAT40 x MLD1" - 4"	6.687	4	2.49	1	2.362	5/8" - 11	2.00
43.463G.72.420	SCAT40 x MLD1-1/4" - 4.2"	6.887	4.2	2.8	1.25	2.795	5/8" - 11	2.50
43.463G.72.600	SCAT40 x MLD1-1/4" - 6"	8.687	6	2.8	1.25	2.795	5/8" - 11	2.70
44.463G.58.350	SCAT50 x MLD1/2" - 3.5"	7.5	3.5	1.84	0.5	1.654	M12 x 1.75P	2.50
44.463G.61.350	SCAT50 x MLD5/8" - 3.5"	7.5	3.5	2.23	0.625	1.889	M12 x 1.75P	2.70
44.463G.64.400	SCAT50 x MLD3/4" - 4"	8	4	2.34	0.75	2.224	5/8" - 11	2.50
44.463G.64.600	SCAT50 x MLD3/4" - 6"	10	6	2.34	0.75	2.224	5/8" - 11	2.80
44.463G.68.400	SCAT50 x MLD1" - 4"	8	4	2.49	1	2.362	5/8" - 11	2.90
44.463G.72.413	SCAT50 x MLD1-1/4" - 4.13"	8.13	4.13	2.8	1.25	2.795	1" - 8	2.70
44.463G.72.600	SCAT50 x MLD1-1/4" - 6"	10	6	2.8	1.25	2.795	5/8" - 11	3.00

Features:

- ▶ Good clamping power. The clamping power of MLD32 type is around 1000 N-m.
- ▶ Runout accuracy of MLD holder body: within 0.005mm.
- ▶ Runout accuracy with collet: within 0.02mm.
- ▶ The tolerance requirement of tool shank diameter is h6.
- ▶ Internal bearing cage helps increase the clamping force.
- ▶ After fastening, the nuts and tool holders contact tight to enhance the cutting rigidity.
- ▶ Coolant options: through the center of holder or cutter. Use sealed caps and SR rings for coolant through cutter.

Product information:

- ▶ The pre-balance reaches G6.3 8,000 rpm. Higher balancing grade and revolution can be done upon request but additional charge is needed.
- ▶ AD+B type is available, please inform us when making an order.

Standard Accessory: • NUT • SET SCREW

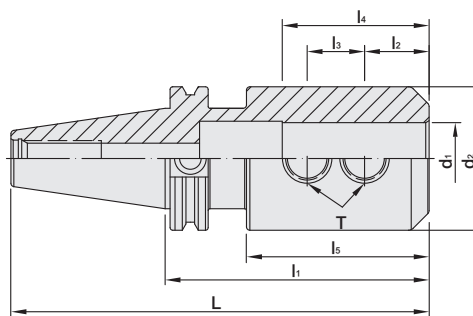
Collet	Sealed Cap	SR Sealed Ring	Pull Stud	Set Screw	Spanner	Spanner
P.W-38~39	P.W-58	P.W-59	P.W-62	P.W-88	P.W-71~72	P.W-73



SCAT / SLN SIDE LOCK END MILL HOLDER

Dual
DRIVE+

SCAT / SLN 法蘭加厚型側固式立銑刀柄



INCHES

MODEL NO.	TYPE	L	l ₁	l ₂	l ₃	l ₄	l ₅	d ₁	d ₂	T	WEIGHT (KGS)
43.653.52.238	SCAT40 x SLN1/8" - 2.375"	5.062	2.375	0.37	-	0.787	0.8	0.125	0.69	6# - 32	1.15
43.653.53.250	SCAT40 x SLN3/16" - 2.5"	5.187	2.5	0.562	-	0.984	0.73	0.1875	0.69	8# - 32	1.20
43.653.54.300	SCAT40 x SLN1/4" - 3"	5.687	3	0.63	-	1.38	1.28	0.25	0.78	1/4 - 28	1.15
43.653.55.300	SCAT40 x SLN5/16" - 3"	5.687	3	0.63	-	1.38	1.11	0.3125	0.88	5/16 - 24	1.20
43.653.56.300	SCAT40 x SLN3/8" - 3"	5.687	3	0.75	-	1.535	1.08	0.375	1	3/8 - 24	1.20
43.653.58.300	SCAT40 x SLN1/2" - 3"	5.687	3	0.875	-	1.732	1.29	0.5	1.25	7/16 - 20	1.40
43.653.61.300	SCAT40 x SLN5/8" - 3"	5.687	3	0.937	-	1.85	1.46	0.625	1.5	1/2 - 20	1.50
43.653.64.300	SCAT40 x SLN3/4" - 3"	5.687	3	1	-	1.929	2.12	0.75	1.75	5/8 - 18	1.65
43.653.64.350	SCAT40 x SLN3/4" - 3.5"	6.187	3.5	1	-	1.929	2.12	0.75	1.75	5/8 - 18	1.70
43.653.66.350	SCAT40 x SLN7/8" - 3.5"	6.187	3.5	1.063	0.875	2.36	2.06	0.875	1.88	5/8 - 18	2.55
43.653.68.400	SCAT40 x SLN1" - 4"	6.687	4	1.125	1	2.56	2.5	1	2	3/4 - 16	2.80
43.653.72.460	SCAT40 x SLN1-1/4" - 4.6"	7.287	4.6	1.125	1	2.56	3.12	1.25	2.5	3/4 - 16	2.90
43.653.77.450	SCAT40 x SLN1-1/2" - 4.5"	7.187	4.5	1.125	1	2.56	3.02	1.5	2.5	3/4 - 16	3.20
44.653.54.400	SCAT50 x SLN1/4" - 4"	8	4	0.63	-	1.38	1.85	0.25	0.78	1/4 - 28	3.95
44.653.55.400	SCAT50 x SLN5/16" - 4"	8	4	0.63	-	1.38	2.23	0.3125	0.88	5/16 - 24	3.95
44.653.56.400	SCAT50 x SLN3/8" - 4"	8	4	0.781	-	1.535	1.89	0.375	1	3/8 - 24	4.00
44.653.58.400	SCAT50 x SLN1/2" - 4"	8	4	0.875	-	1.732	2.08	0.5	1.25	7/16 - 20	4.15
44.653.61.400	SCAT50 x SLN5/8" - 4"	8	4	0.937	-	1.85	1.83	0.625	1.5	1/2 - 20	4.30
44.653.64.400	SCAT50 x SLN3/4" - 4"	8	4	1	-	1.929	1.96	0.75	1.75	5/8 - 18	4.35
44.653.66.400	SCAT50 x SLN7/8" - 4"	8	4	1.063	0.875	2.36	2.43	0.875	1.88	5/8 - 18	5.30
44.653.68.400	SCAT50 x SLN1" - 4"	8	4	1.125	1	2.56	2.5	1	2	3/4 - 16	5.50
44.653.72.400	SCAT50 x SLN1-1/4" - 4"	8	4	1.125	1	2.756	2.5	1.25	2.5	3/4 - 16	5.65
44.653.72.460	SCAT50 x SLN1-1/4" - 4.6"	8.6	4.6	1.125	1	2.756	3.1	1.25	2.5	3/4 - 16	5.70
44.653.77.460	SCAT50 x SLN1-1/2" - 4.6"	8.6	4.6	1.125	1	2.756	3.14	1.5	2.5	3/4 - 16	5.70
44.653.86.600	SCAT50 x SLN2" - 6"	10	6	1.335	1.41	3.347	4.48	2	3.75	1 - 14	5.90

Features:

- ▶ Internal hole tolerance: H5.

Product information:

- ▶ The pre-balance reaches G6.3 8,000 rpm. Higher balancing grade and revolution can be done upon request but additional charge is needed.
- ▶ AD+B type is available, please inform us when making an order.

Pull Stud

Lock Screw



P.W-62

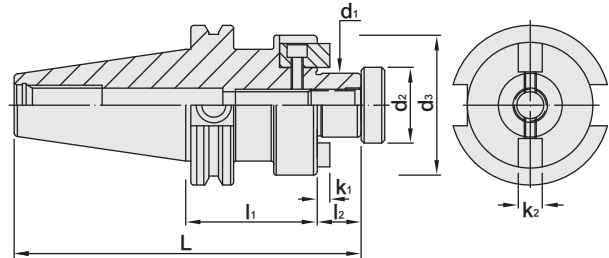
P.W-90



SCAT FACE MILL ARBOR

Dual
DRIVE+

SCAT / FMA 法蘭加厚型平面銑刀柄



INCHES

MODEL NO.	TYPE	L	l ₁	l ₂	d ₁	d ₂	d ₃	K ₁	K ₂	WEIGHT (KGS)
43.151.64.137	SCAT40 x FMA3/4" - 1.37"	4.744	1.37	0.687	0.75	0.875	1.69	0.188	0.3125	1.50
43.151.64.400	SCAT40 x FMA3/4" - 4"	7.374	4	0.687	0.75	0.875	1.69	0.188	0.3125	1.70
43.151.64.600	SCAT40 x FMA3/4" - 6"	9.374	6	0.687	0.75	0.875	1.69	0.188	0.3125	1.90
43.151.68.206	SCAT40 x FMA1" - 2.06"	5.434	2.06	0.687	1	1.1875	2.19	0.188	0.375	1.50
43.151.68.400	SCAT40 x FMA1" - 4"	7.374	4	0.687	1	1.1875	2.19	0.188	0.375	2.55
43.151.68.600	SCAT40 x FMA1" - 6"	9.374	6	0.687	1	1.1875	2.19	0.188	0.375	2.75
43.151.72.221	SCAT40 x FMA1-1/4" - 2.21"	5.584	2.21	0.687	1.25	1.5	2.75	0.25	0.5	2.60
43.151.72.400	SCAT40 x FMA1-1/4" - 4"	7.374	4	0.687	1.25	1.5	2.75	0.25	0.5	2.75
43.151.72.600	SCAT40 x FMA1-1/4" - 6"	9.374	6	0.687	1.25	1.5	2.75	0.25	0.5	2.95
43.151.77.221	SCAT40 x FMA1-1/2" - 2.21"	5.584	2.21	0.938	1.5	1.875	3.81	0.349	0.625	2.70
43.151.77.400	SCAT40 x FMA1-1/2" - 4"	7.627	4	0.938	1.5	1.875	3.81	0.349	0.625	2.95
44.151.64.150	SCAT50 x FMA3/4" - 1.5"	6.187	1.5	0.687	0.75	0.875	-	0.188	0.3125	4.20
44.151.64.350	SCAT50 x FMA3/4" - 3.5"	8.187	3.5	0.687	0.75	0.875	1.69	0.188	0.3125	4.40
44.151.64.550	SCAT50 x FMA3/4" - 5.5"	10.187	5.5	0.687	0.75	0.875	1.69	0.188	0.3125	4.60
44.151.68.200	SCAT50 x FMA1" - 2"	6.687	2	0.687	1	1.1875	2.19	0.188	0.375	4.50
44.151.68.400	SCAT50 x FMA1" - 4"	8.687	4	0.687	1	1.1875	2.19	0.188	0.375	4.70
44.151.68.600	SCAT50 x FMA1" - 6"	10.687	6	0.687	1	1.1875	2.19	0.188	0.375	4.90
44.151.72.150	SCAT50 x FMA1-1/4" - 1.5"	6.187	1.5	0.687	1.25	1.5	2.75	0.25	0.5	4.70
44.151.72.350	SCAT50 x FMA1-1/4" - 3.5"	8.187	3.5	0.687	1.25	1.5	2.75	0.25	0.5	4.80
44.151.72.500	SCAT50 x FMA1-1/4" - 5"	9.687	5	0.687	1.25	1.5	2.75	0.25	0.5	5.00
44.151.72.600	SCAT50 x FMA1-1/4" - 6"	10.687	6	0.687	1.25	1.5	2.75	0.25	0.5	5.10
44.151.77.240	SCAT50 x FMA1-1/2" - 2.4"	7.388	2.4	0.938	1.5	1.875	3.81	0.349	0.625	5.00
44.151.77.400	SCAT50 x FMA1-1/2" - 4"	8.988	4	0.938	1.5	1.875	3.81	0.349	0.625	5.20
44.151.77.600	SCAT50 x FMA1-1/2" - 6"	10.988	6	0.938	1.5	1.875	3.81	0.349	0.625	5.40
44.151.86.240	SCAT50 x FMA2" - 2.4"	7.388	2.4	0.938	2	2.5	4.88	0.384	0.75	5.40
44.151.86.400	SCAT50 x FMA2" - 4"	8.988	4	0.938	2	2.5	4.88	0.384	0.75	5.60

Features:

- ▶ d1 tolerance: h6.

Product information:

- ▶ The pre-balance reaches G6.3 3,000 rpm. Higher balancing grade and revolution can be done upon request but additional charge is needed.
- ▶ AD+B type is available, please inform us when making an order.

Pull Stud

Screw



P.W-62

P.W-89

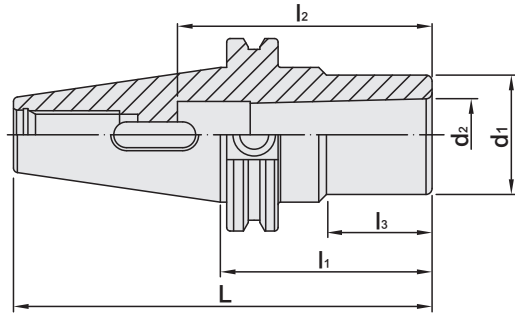
SCAT MORSE TAPER ADAPTER

TANG TYPE



SCAT 法蘭加厚型斜柄鑽頭套筒

(DIN 228-2)



INCHES

MODEL NO.	TYPE	L	l ₁	l ₂	l ₃	d ₁	d ₂	WEIGHT (KGS)
43.465.01.160	SCAT40 x MTA1 - 1.6"	4.287	1.6	2.205	0.12	1	0.475	1.30
43.465.02.200	SCAT40 x MTA2 - 2"	4.687	2	2.638	0.32	1.25	0.7	1.50
43.465.03.275	SCAT40 x MTA3 - 2.75"	5.437	2.75	3.307	1.29	1.55	0.938	1.14
43.465.04.375	SCAT40 x MTA4 - 3.75"	6.437	3.75	4.213	2.37	1.75	1.23	1.20
44.465.01.200	SCAT50 x MTA1 - 2"	6	2	2.205	0.13	1	0.475	4.05
44.465.02.200	SCAT50 x MTA2 - 2"	6	2	2.638	0.5	1.25	0.7	4.40
44.465.03.250	SCAT50 x MTA3 - 2.5"	6.5	2.5	3.307	1	1.55	0.938	4.50
44.465.04.330	SCAT50 x MTA4 - 3.3"	7.3	3.3	4.213	1.8	1.75	1.23	4.90
44.465.05.410	SCAT50 x MTA5 - 4.1"	8.1	4.1	5.236	2.59	2.48	1.748	5.15

Features:

- The tools used for MTA are consistent with Morse Taper DIN 228 FORM B (with Tang).

Pull Stud



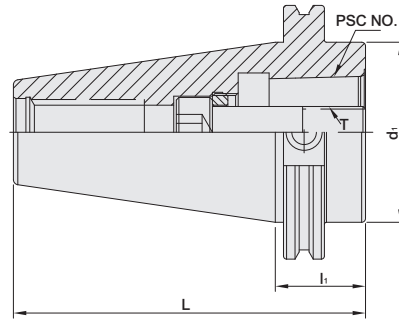
P.W-62



SCAT ADAPTER

Dual
DRIVE+

SCAT 法蘭加厚型套筒



MODEL NO.	TYPE	NO.	L	l ₁	d ₁	T	MAX. TORQUE		WEIGHT (KGS)
							Nm	ft-lbs	
43.501.32.035	SCAT40 x PSC32 - 35	PSC32	103.249	35	44.45	M12 x 1.5P	45	33	1.02
43.501.40.035	SCAT40 x PSC40 - 35	PSC40	103.249	35	44.45	M14 x 1.5P	55	40	0.93
43.501.50.035	SCAT40 x PSC50 - 35	PSC50	103.249	35	44.45	M16 x 1.5P	95	70	0.85
43.501.63.090	SCAT40 x PSC63 - 90	PSC63	158.249	90	44.45	M20 x 2.0P	170	125	1.85
44.501.32.035	SCAT50 x PSC32 - 35	PSC32	136.6	35	69.85	M12 x 1.5P	45	33	3.05
44.501.40.035	SCAT50 x PSC40 - 35	PSC40	136.6	35	69.85	M14 x 1.5P	55	40	3.00
44.501.50.035	SCAT50 x PSC50 - 35	PSC50	136.6	35	69.85	M16 x 1.5P	95	70	2.90
44.501.63.035	SCAT50 x PSC63 - 35	PSC63	136.6	35	69.85	M20 x 2.0P	170	125	2.68

INCHES

44.501.63.400	SCAT50 x PSC63 - 4"	PSC63	184.15	101.6	69.85	M20 x 2.0P	170	125	4.42
44.501.63.600	SCAT50 x PSC63 - 6"	PSC63	234.95	152.4	69.85	M20 x 2.0P	170	125	5.78
44.501.63.800	SCAT50 x PSC63 - 8"	PSC63	285.75	203.2	69.85	M20 x 2.0P	170	125	7.14
44.501.63.100	SCAT50 x PSC63 - 10"	PSC63	336.55	254	69.85	M20 x 2.0P	170	125	8.50
44.501.63.120	SCAT50 x PSC63 - 12"	PSC63	387.35	304.8	69.85	M20 x 2.0P	170	125	9.87
44.501.80.374	SCAT50 x PSC80 - 3.74"	PSC80	196.596	94.996	80.01	M20 x 2.0P	170	125	3.05

Pull Stud

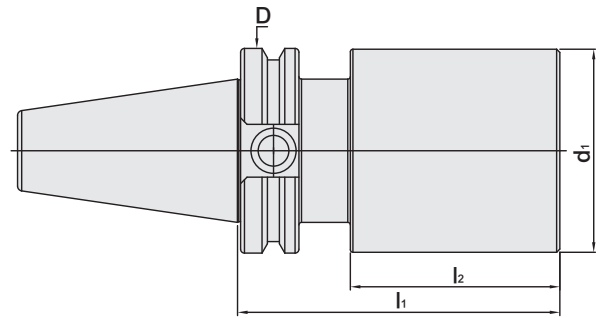


P.W-62

SCAT BLANK



SCAT 法蘭加厚型素材



INCHES

MODEL NO.	TYPE	D	d ₁	l ₁	l ₂	WEIGHT (KGS)
43.001.98.800	SCAT40 x ϕ 3" - 8"	2.5	3	8	6.625	6.94
44.001.A1.800	SCAT50 x ϕ 3.15" - 8"	3.875	3.15	8	6.625	6.91
44.001.A1.120	SCAT50 x ϕ 3.15" - 12"	3.875	3.15	12	10.625	13.55
44.001.99.800	SCAT50 x ϕ 4" - 8"	3.875	4	8	6.625	13.60
44.001.99.120	SCAT50 x ϕ 4" - 12"	3.875	4	12	10.625	19.95
44.001.A7.800	SCAT50 x ϕ 6" - 8"	3.875	6	8	6.625	26.73
44.001.A7.120	SCAT50 x ϕ 6" - 12"	3.875	6	12	10.625	41.0

Pull Stud



P.W-62



MEMO

Blank lined area for writing a memo.

