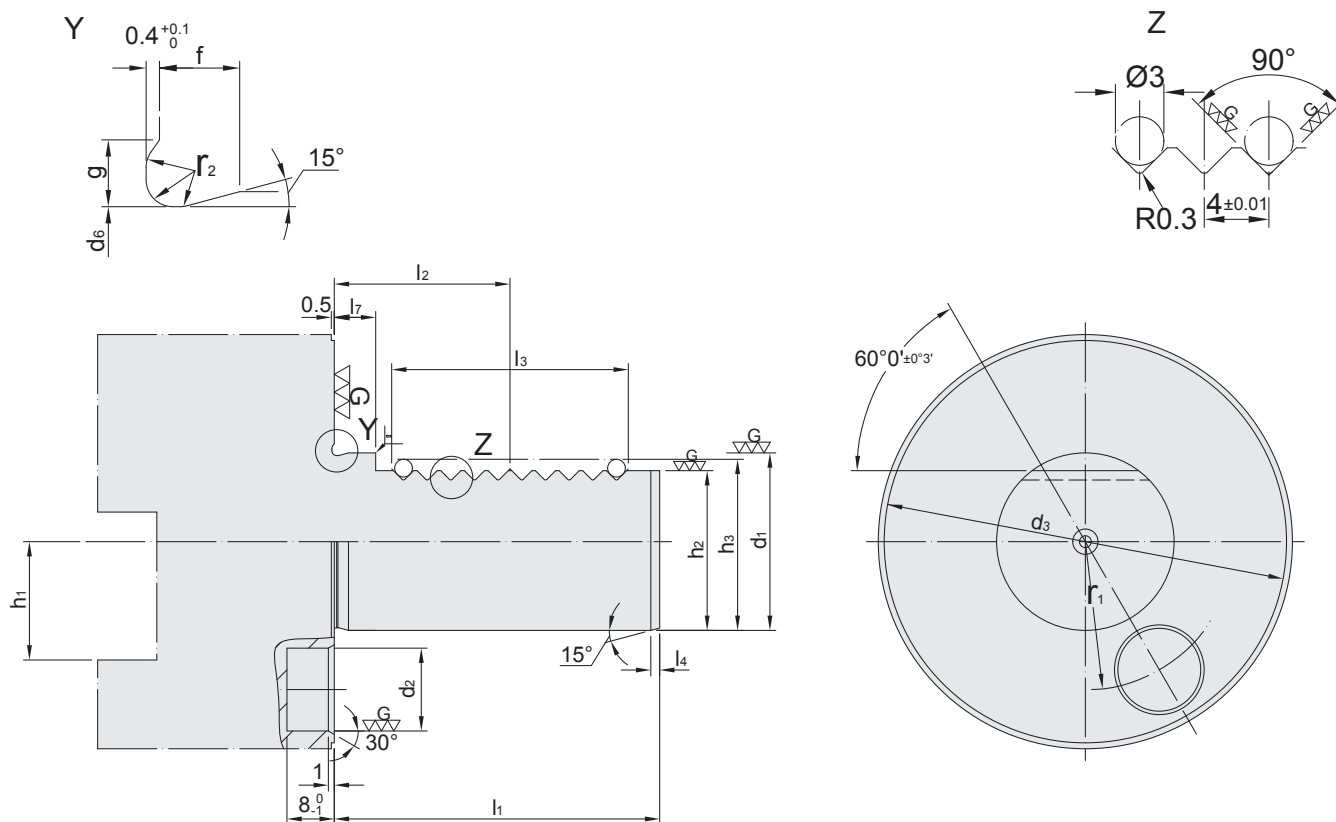


VDI CATEGORY

BLANK	V-4
EXTERNAL TURNING TOOL HOLDER SYSTEM	V-5~6
FACE TURNING TOOL HOLDER SYSTEM	V-7~8
SIDE LOCK HOLDER	V-9
BORING BAR HOLDER	V-10
EOC COLLET CHUCK HOLDER	V-11
ER COLLET CHUCK HOLDER	V-11
DRILL CHUCK	V-12

REFERENCE DETAILS

DIN ISO 10889



$$\text{G} = \text{Rz } 2.5$$

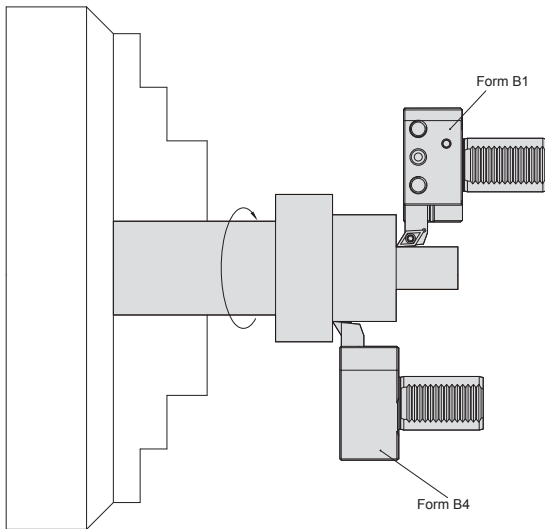
d_1	l_1	d_2	d_3	d_6	f	g	h_1	h_2	l_2	l_3	l_4	l_7	r_1	r_2	O-Ring	
h_1	± 0.3			$0_{-0.1}$			max	± 0.1	± 0.05	min	$\begin{matrix} -1 \\ 0 \end{matrix}$		± 0.02			
16	32	8	H6	40	15.4	2	1.7	12	15	12.7	16	2	3.5	14.5	0.6	15 x 15
20	40	10	H6	50	19.1	2.4	2	16	18	21.7	24	2	7	18	0.8	18.77 x 1.78
25	48	10	H6	58	24.1	2.4	2	16	23.5	21.7	24	2	7	21	0.8	23.52 x 1.78
30	55	14	H8	68	29.1	2.4	2	20	27	29.7	40	2	7	25	0.8	28.3 x 1.78
40	63	14	H8	83	38.7	3.7	2.8	25	36	29.7	40	3	7	32	1.2	37.77 x 2.62
50	78	16	H8	98	48.7	3.7	2.8	32	45	35.7	48	3	8	37	1.2	47.29 x 2.62
60	94	16	H8	123	58.7	4.3	3.7	32	55	43.7	56	4	10	48	1.6	56.74 x 3.53
80	124	20	H8	158	78.7	4.3	3.7	40	72	59.7	80	4	10	65	1.6	75.79 x 3.53

- ▶ DIN ISO 10889 Tool Holders have features as the following:
Advanced structure, high manufacturing precision, easy operation and strong exchangeability function, etc.
- ▶ DIN ISO 10889 Tool Holders have such tapers as VDI16, VDI20, VDI30, VDI40, VDI50, VDI60, VDI80, etc. It's available for customers to choose suitable types according to their requests, such as turning tool holder, boring bar holder, high speed drill tool holder, drill chuck tool holder, cutting tool holder, etc.

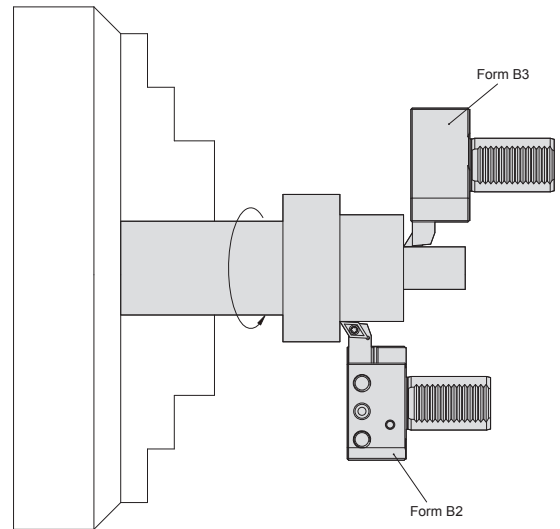
SPINDLE ROTATES PATTERN

DIN ISO 10889

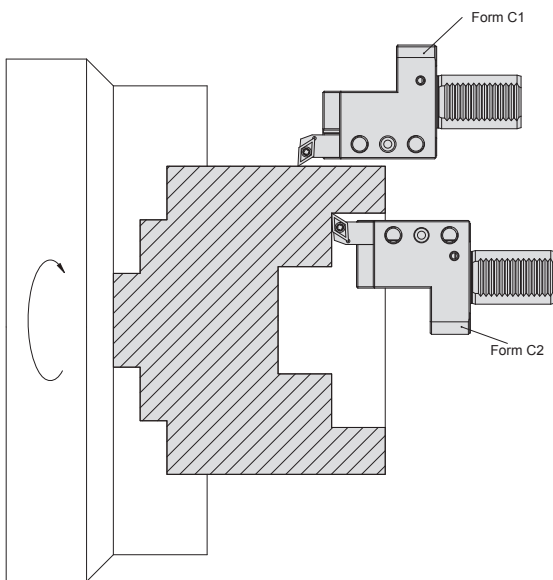
Spindle rotates counterclockwise:



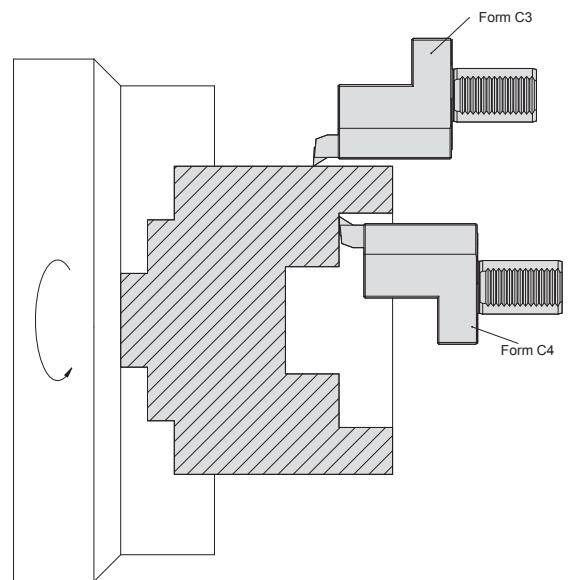
Spindle rotates clockwise:



Spindle rotates counterclockwise:



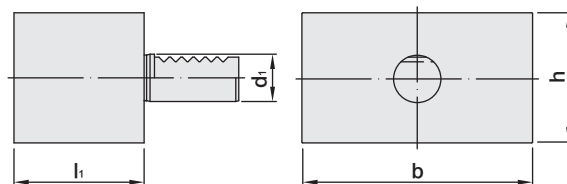
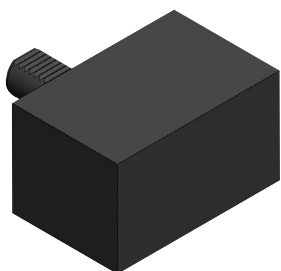
Spindle rotates clockwise:



VDI BLANK

VDI 素材

[A1/DIN ISO 10889-2]

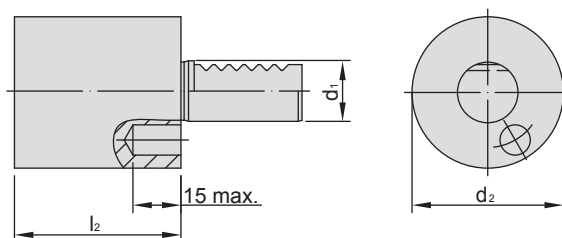


MODEL NO.	TYPE $d_1 \times l_1$	d_1	l_1	b	h
150.A1.30.85	30 x 85	30	85	130	76
150.A1.40.100	40 x 100	40	100	151	96
150.A1.50.125	50 x 125	50	125	160	120

VDI BLANK

VDI 素材

[A2/DIN ISO 10889-2]

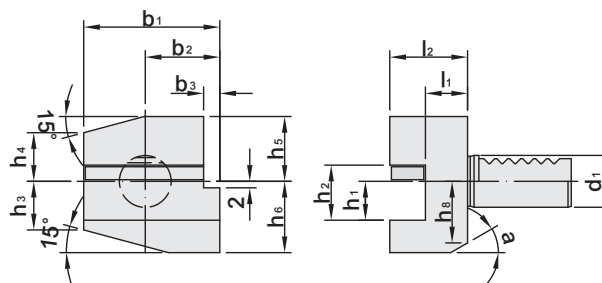


MODEL NO.	TYPE $d_1 \times l_2$	d_1	d_2	l_2
150.A2.30.100	30 x 100	30	68	100
150.A2.30.160	30 x 160	30	68	160
150.A2.30.240	30 x 240	30	68	240
150.A2.40.120	40 x 120	40	83	120
150.A2.40.160	40 x 160	40	83	160
150.A2.40.200	40 x 200	40	83	200
150.A2.40.320	40 x 320	40	83	320
150.A2.50.400	50 x 400	50	50	400

EXTERNAL TURNING TOOL HOLDER

外徑刀座

(B1/DIN ISO 10889-3)



MODEL NO.	TYPE $d_1 \times h_1 \times l_2$	d_1	b_1	b_2	b_3	h_1	h_2	h_3	h_4	h_5	h_6	h_8	l_1	l_2	a
150.B1.30.20.40	30 x 20 x 40	30	70	35	10	20	29	26	22	28	38	30	22	40	25°
150.B1.30.20.60	30 x 20 x 60	30	70	35	10	20	29	26	22	28	38	30	42	60	25°
150.B1.40.25.44	40 x 25 x 44	40	85	42.5	12.5	25	34	35	30	32.5	48	-	22	44	-
150.B1.50.32.55	50 x 32 x 55	50	100	50	16	32	41	42	35	35	60	-	30	55	-

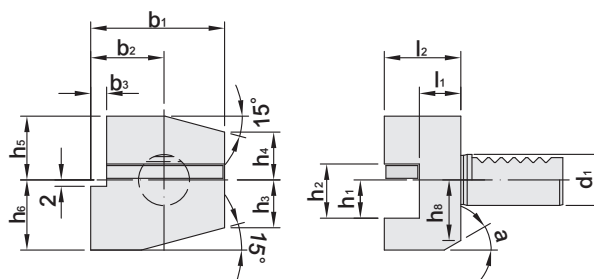
Features:

- ▶ Radial-right handed.
- ▶ Short tool holder.
- ▶ With coolant hole.

EXTERNAL TURNING TOOL HOLDER

外徑刀座

(B2/DIN ISO 10889-3)



MODEL NO.	TYPE $d_1 \times h_1 \times l_2$	d_1	b_1	b_2	b_3	h_1	h_2	h_3	h_4	h_5	h_6	h_8	l_1	l_2	a
150.B2.30.20.40	30 x 20 x 40	30	70	35	10	20	29	26	22	28	38	30	22	40	25°
150.B2.30.20.60	30 x 20 x 60	30	70	35	10	20	29	26	22	28	38	30	42	60	25°
150.B2.40.25.44	40 x 25 x 44	40	85	42.5	12.5	25	34	35	30	32.5	48	-	22	44	-
150.B2.50.32.55	50 x 32 x 55	50	100	50	16	32	41	42	35	35	60	-	30	55	-

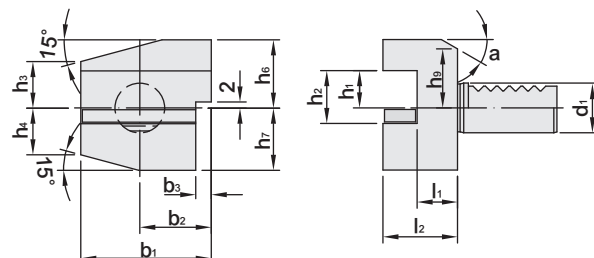
Features:

- ▶ Radial-left handed.
- ▶ Short tool holder.
- ▶ With coolant hole.

EXTERNAL TURNING TOOL HOLDER

外徑刀座

(B3/DIN ISO 10889-3)



MODEL NO.	TYPE $d_1 \times h_1 \times l_2$	d_1	b_1	b_2	b_3	h_1	h_2	h_3	h_4	h_6	h_7	h_9	l_1	l_2	a
150.B3.30.20.40	30 x 20 x 40	30	70	35	10	20	29	26	22	38	35	28	22	40	25°
150.B3.30.20.60	30 x 20 x 60	30	70	35	10	20	29	26	22	38	35	28	42	60	25°
150.B3.40.25.44	40 x 25 x 44	40	85	42.5	12.5	25	34	35	30	48	42.5	-	22	44	-
150.B3.50.32.55	50 x 32 x 55	50	100	50	16	32	41	42	35	60	50	-	30	55	-

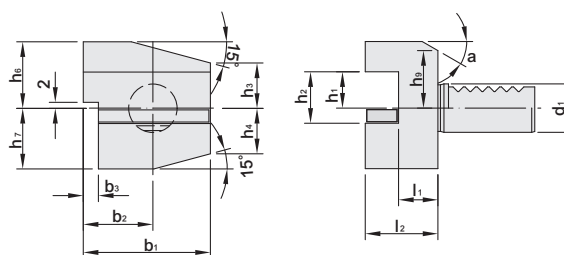
Features:

- ▶ Radial-right handed.
- ▶ Short tool holder.
- ▶ Turning insert downwards.
- ▶ With coolant hole.

EXTERNAL TURNING TOOL HOLDER

外徑刀座

(B4/DIN ISO 10889-3)

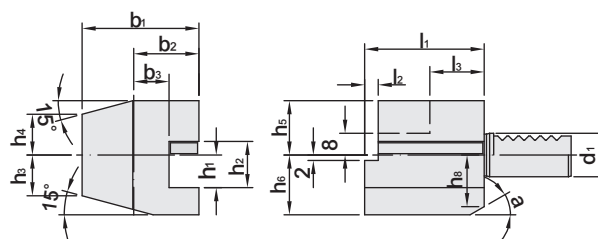


MODEL NO.	TYPE $d_1 \times h_1 \times l_2$	d_1	b_1	b_2	b_3	h_1	h_2	h_3	h_4	h_6	h_7	h_9	l_1	l_2	a
150.B4.30.20.40	30 x 20 x 40	30	70	35	10	20	29	26	22	38	35	28	22	40	25°
150.B4.30.20.60	30 x 20 x 60	30	70	35	10	20	29	26	22	38	35	28	42	60	25°
150.B4.40.25.44	40 x 25 x 44	40	85	42.5	12.5	25	34	35	30	48	42.5	-	22	44	-
150.B4.50.32.55	50 x 32 x 55	50	100	50	16	32	41	42	35	60	50	-	30	55	-

FACE TURNING TOOL HOLDER

端面刀座

[C1/DIN ISO 10889-4]

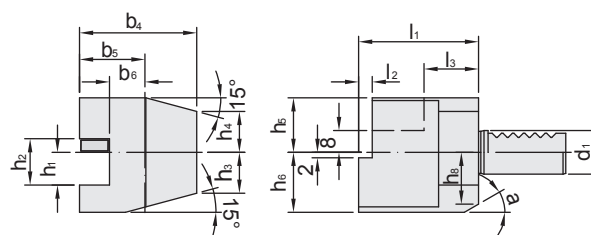


MODEL NO.	TYPE $d_1 \times h_1$	d_1	b_1	b_2	b_3	h_1	h_2	h_3	h_4	h_5	h_6	h_8	l_1	l_2	l_3	a
150.C1.30.20	30 x 20	30	70	35	17	20	29	26	22	28	38	30	70	10	30	25°
150.C1.40.25	40 x 25	40	85	42.5	21	25	34	35	30	32.5	48	-	85	12.5	30	-
150.C1.50.32	50 x 32	50	100	50	26	32	41	42	35	35	60	-	100	16	40	-

FACE TURNING TOOL HOLDER

端面刀座

[C2/DIN ISO 10889-4]

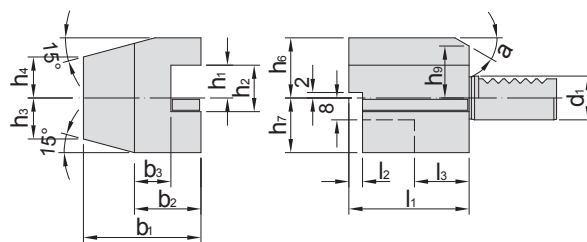
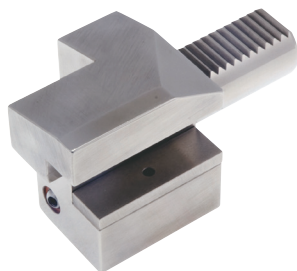


MODEL NO.	TYPE $d_1 \times h_1$	d_1	b_4	b_5	b_6	h_1	h_2	h_3	h_4	h_5	h_6	h_8	l_1	l_2	l_3	a
150.C2.30.20	30 x 20	30	76	41	23	20	29	26	22	28	38	30	70	10	30	25°
150.C2.40.25	40 x 25	40	90	47.5	25.5	25	34	35	30	32.5	48	-	85	12.5	30	-
150.C2.50.32	50 x 32	50	105	55	30.5	32	41	42	35	35	60	-	100	16	40	-

FACE TURNING TOOL HOLDER

端面刀座

[C3/DIN ISO 10889-4]

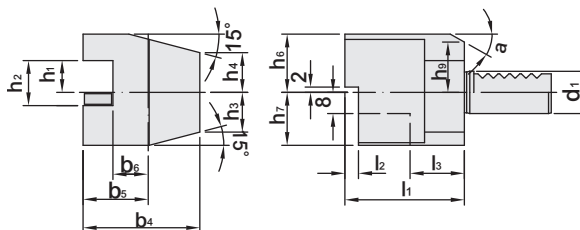


MODEL NO.	TYPE $d_1 \times h_1$	d_1	b_1	b_2	b_3	h_1	h_2	h_3	h_4	h_6	h_7	h_9	l_1	l_2	l_3	a
150.C3.30.20	30 x 20	30	70	35	17	20	29	26	22	28	35	28	70	10	30	25°
150.C3.40.25	40 x 25	40	85	42.5	21	25	34	35	30	48	42.5	-	85	12.5	30	-
150.C3.50.32	50 x 32	50	100	50	26	32	41	42	35	60	50	-	100	16	40	-

FACE TURNING TOOL HOLDER

端面刀座

[C4/DIN ISO 10889-4]

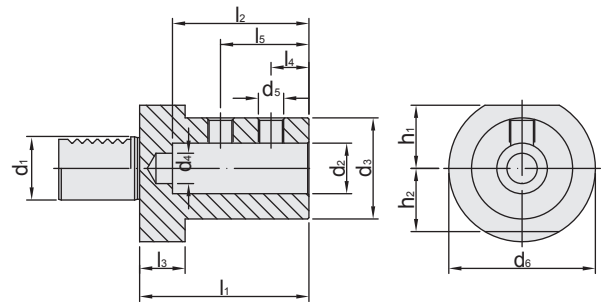


MODEL NO.	TYPE $d_1 \times h_1$	d_1	b_4	b_5	b_6	h_1	h_2	h_3	h_4	h_6	h_7	h_9	l_1	l_2	l_3	a
150.C4.30.20	30 x 20	30	76	41	23	20	29	26	22	38	35	28	70	10	30	25°
150.C4.40.25	40 x 25	40	90	47.5	25.5	25	34	35	30	48	42.5	-	85	12.5	30	-
150.C4.50.32	50 x 32	50	105	55	30.5	32	41	42	35	60	50	-	100	16	40	-

SIDE LOCK HOLDER

內孔側固式刀座 [用於快鑽]

[E1/DIN ISO 10889-6]



MODEL NO.	TYPE d ₁ x d ₂	d ₁	d ₂	d ₃	d ₄	d ₅	d ₆	h ₁	h ₂	l ₁	l ₂	l ₃	l ₄	l ₅
150.E1.30.20	30 x 20	30	20	40	12	M10x1	68	28	30	67	54	22	15	35
150.E1.30.25	30 x 25	30	25	45	17	M12x1	68	28	30	71	59	22	17	40
150.E1.30.32	30 x 32	30	32	52	24	M12x1	68	28	30	75	63	22	17	44
150.E1.30.40	30 x 40	30	40	65	24	M16x1	68	28	30	90	73	22	22	50
150.E1.40.18	40 x 18	40	18	40	12	M10x1	83	32.5	-	67	54	22	15	35
150.E1.40.20	40 x 20	40	20	40	12	M10x1	83	32.5	-	67	54	22	15	35
150.E1.40.25	40 x 25	40	25	45	17	M12x1	83	32.5	-	75	59	22	17	40
150.E1.40.32	40 x 32	40	32	52	24	M12x1	83	32.5	-	75	63	22	17	44
150.E1.40.40	40 x 40	40	40	65	32	M16x1	83	32.5	-	90	73	22	22	50
150.E1.40.50	40 x 50	40	50	83	32	M16x1	83	32.5	-	100	83	22	24	60
150.E1.50.20	50 x 20	50	20	40	12	M10x1	98	35	-	67	54	30	15	35
150.E1.50.25	50 x 25	50	25	45	17	M12x1	98	35	-	80	59	30	17	40
150.E1.50.32	50 x 32	50	32	52	24	M12x1	98	35	-	80	63	30	17	44
150.E1.50.40	50 x 40	50	40	65	32	M16x1	98	35	-	90	73	30	22	50
150.E1.50.50	50 x 50	50	50	75	42	M16x1	98	35	-	100	83	30	24	60

Features:

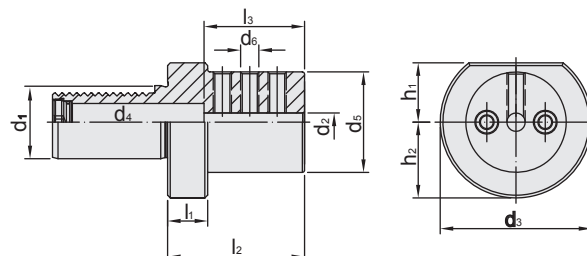
- ▶ Tolerance of internal hole: H5.
- ▶ Applicable for High Speed Drill.
- ▶ With center coolant.



BORING BAR HOLDER

内孔側固式刀座 [用於內徑車刀]

(E2/DIN ISO 10889-6)



MODEL NO.	TYPE $d_1 \times d_2$	d_1	d_2	d_3	d_4	d_5	d_6	h_1	h_2	l_1	l_2	l_3
150.E2.30.08	30 x 8	30	8	68	6	55	M6	28	30	22	60	51
150.E2.30.10	30 x 10	30	10	68	8	55	M6	28	30	22	60	51
150.E2.30.12	30 x 12	30	12	68	10	55	M8	28	30	22	60	51
150.E2.30.14	30 x 14	30	14	68	10	55	M8	28	30	22	60	52
150.E2.30.16	30 x 16	30	16	68	12	55	M8	28	30	22	60	51
150.E2.30.18	30 x 18	30	18	68	10	55	M8	28	30	22	60	52
150.E2.30.20	30 x 20	30	20	68	16.5	55	M8	28	30	22	60	51
150.E2.30.25	30 x 25	30	25	68	16	55	M8	28	30	22	60	51
150.E2.30.32	30 x 32	30	32	68	16	68	M8	28	30	22	75	61
150.E2.40.10	40 x 10	40	10	83	8	55	M10	32.5	-	22	75	61
150.E2.40.12	40 x 12	40	12	83	10	55	M10	32.5	-	22	75	61
150.E2.40.14	40 x 14	40	14	83	10	55	M8	32.5	-	22	75	61
150.E2.40.16	40 x 16	40	16	83	16.5	55	M10	32.5	-	22	75	61
150.E2.40.18	40 x 18	40	18	83	10	55	M8	32.5	-	22	75	61
150.E2.40.20	40 x 20	40	20	83	16.5	55	M10	32.5	-	22	75	61
150.E2.40.25	40 x 25	40	25	83	20.5	55	M10	32.5	-	22	75	61
150.E2.40.32	40 x 32	40	32	83	20.5	83	M10	32.5	-	22	75	61
150.E2.40.40	40 x 40	40	40	83	20.5	83	M10	32.5	-	22	90	76
150.E2.40.50	40 x 50	40	50	83	20.5	83	M12	32.5	-	22	90	76
150.E2.50.12	50 x 12	50	12	98	10	55	M8	35	-	30	75	61
150.E2.50.16	50 x 16	50	16	98	12	68	M10	35	-	30	90	76
150.E2.50.20	50 x 20	50	20	98	16	68	M12	35	-	30	90	76
150.E2.50.25	50 x 25	50	25	98	20	68	M12	35	-	30	90	76
150.E2.50.32	50 x 32	50	32	98	25	68	M12	35	-	30	90	76
150.E2.50.40	50 x 40	50	40	98	25	98	M12	35	-	30	90	76
150.E2.50.50	50 x 50	50	50	98	25	98	M12	35	-	30	100	86

Features:

- ▶ Tolerance of internal hole: H5.
- ▶ Applicable for internal boring bar.
- ▶ With center coolant and side coolant(coolant holes).



EOC COLLET CHUCK HOLDER

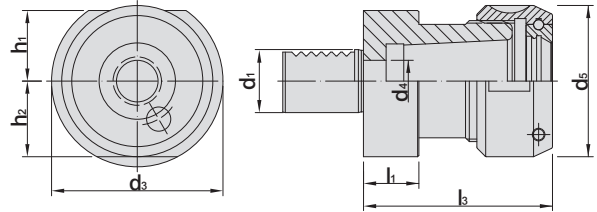
FOR EOC COLLETS

EOC 套筒式刀座

(E3/DIN ISO 10889-6)



T W PAT NO. M298033
 T W PAT NO. M311791
 J P PAT NO. 3128766
 K R PAT NO. 20-0433603
 C N PAT NO. ZL200620132661.0
 C H PAT NO. 696550
 T R PAT NO. TR 2007 02942 Y
 I T PAT NO. N.0000266731



MODEL NO.	TYPE	d ₁	d ₃	d ₄ min	d ₅	h ₁	h ₂	l ₁	l ₃
150.E3.30.25	30 x EOC25	30	68	16.5	60	28	30	22	75
150.E3.40.25	40 x EOC25	40	83	20.5	60	32.5	-	22	75
150.E3.40.32	40 x EOC32	40	83	20.5	72	32.5	-	22	90
150.E3.50.25	50 x EOC25	50	98	25.5	60	35	-	30	75
150.E3.50.32	50 x EOC32	50	98	25.5	72	35	-	30	90

Collet	Nut	Spanner
P.W-41	P.W-57	P.W-68~72

ER COLLET CHUCK HOLDER

FOR ER COLLETS

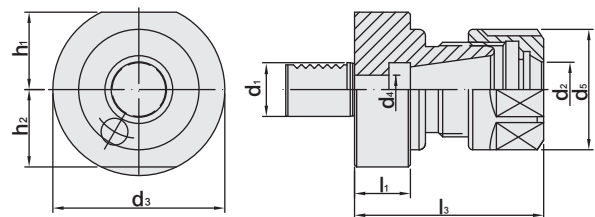
ER 套筒式刀座

(E4/DIN ISO 10889-6)

(DIN ISO 15488)



T W PAT NO. M298033
 T W PAT NO. M311791
 J P PAT NO. 3128766
 K R PAT NO. 20-0433603
 C N PAT NO. ZL200620132661.0
 C H PAT NO. 696550
 T R PAT NO. TR 2007 02942 Y
 I T PAT NO. N.0000266731



MODEL NO.	TYPE	d ₁	d ₂ ER	d ₃	d ₄ min	d ₅	h ₁	h ₂	l ₁	l ₃
150.E4.30.25	30 x ER25	30	25	68	16.5	42	28	30	22	57
150.E4.30.32	30 x ER32	30	32	68	16.5	50	28	30	22	62
150.E4.30.40	30 x ER40	30	40	68	16.5	63	28	30	22	70
150.E4.40.25	40 x ER25	40	25	83	20.5	42	32.5	-	22	57
150.E4.40.32	40 x ER32	40	32	83	20.5	50	32.5	-	22	62
150.E4.40.40	40 x ER40	40	40	83	20.5	63	32.5	-	22	75
150.E4.50.40	50 x ER40	50	40	98	20.5	63	35	-	30	75

Collet	Nut	Spanner
P.W-7~28	P.W-48	P.W-68~71

Features:

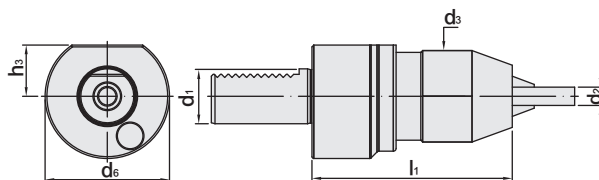
- ▶ It can match with ER Collets (DIN-15488 standard) and can clamp all kinds of straight shank tools.
- ▶ Rigidity can be raised by using ER Power Good Clamping Nut.
- ▶ Matching with Wind Resistance Nut can raise clamping power, stability and precision.



VDI DRILL CHUCK

SPU 鑽夾頭

[TYPE SPU]



MODEL NO.	TYPE	d ₁	d ₂	d ₃	d ₆	h ₃	l ₁
150.30.669.08	30 x SPU8	30	0.5 ~ 8	36	68	28	75
150.30.669.13	30 x SPU13	30	1 ~ 13	50	68	28	109
150.30.669.16	30 x SPU16	30	3 ~ 16	57	68	28	115
150.40.669.08	40 x SPU8	40	0.5 ~ 8	36	83	32.5	75
150.40.669.13	40 x SPU13	40	1 ~ 13	50	83	32.5	90
150.40.669.16	40 x SPU16	40	3 ~ 16	57	83	32.5	110
150.50.669.13	50 x SPU13	50	1 ~ 13	57	98	35	100
150.50.669.16	50 x SPU16	50	3 ~ 16	57	98	35	90