

COMPLETE KIT TECHNICAL INFO. CATEGORY

ER COLLET SET	X-2
ER MILLING CHUCK SET	X-3
ER COLLET CHUCK SET	X-4
SHIN-YAIN MILLING CHUCK SET	X-5
EOC 32 MILLING CHUCK SET	X-6
TG 100 MILLING CHUCK SET	X-7
SKS/SBL/MLD COLLET CHUCK FULL SET	X-8
BALANCE STANDARD FORMULA LIST	Y-1
REFERENCE DETAILS	Y-2~3

ER COLLET SET

ER 彈性筒夾組

(DIN ISO 15488)



MODEL NO.	PCS / SET	COLLET KIT			WEIGHT (KGS)
04200	ER8 x 9	5, 4.5, 4, 3.5, 3, 2.5, 2, 1.5, 1			0.15
04201	ER11 x 13	7, 6.5, 6, 5.5, 5, 4.5, 4, 3.5, 3, 2.5, 2, 1.5, 1			0.23
04202	ER16 x 10	10, 9, 8, 7, 6, 5, 4, 3, 2, 1			0.40
04203	ER20 x 12	13, 12, 11, 10, 9, 8, 7, 6, 5, 4, 3, 2			0.60
04204	ER25 x 15	16, 15, 14, 13, 12, 11, 10, 9, 8, 7, 6, 5, 4, 3, 2			1.70
04205	ER32 x 18	20, 19, 18, 17, 16, 15, 14, 13, 12, 11, 10, 9, 8, 7, 6, 5, 4, 3			2.60
04206	ER40 x 23	26, 25, 24, 23, 22, 21, 20, 19, 18, 17, 16, 15, 14, 13, 12, 11, 10, 9, 8, 7, 6, 5, 4			6.60
04207	ER50 x 17	34, 32, 30, 28, 26, 24, 22, 20, 18, 16, 14, 12, 10, 9, 8, 7, 6			8.45
L mm	D mm	CONCENTRICITY	ER-UP CLASS	ER-A CLASS	
6	1.0 - 1.4	0.015	0.005	0.01	
10	1.5 - 2.9	0.015	0.005	0.01	
16	3.0 - 5.9	0.015	0.005	0.01	
25	6.0 - 9.9	0.015	0.005	0.01	
40	10.0 - 17.9	0.020	0.005	0.01	
50	18.0 - 26.9	0.020	0.005	0.01	
60	27.0 - 34.0	0.020	0.005	0.01	

- ▶ UP = Ultra Precision
- ▶ ER-UP collets must be used with HSP Clamping Nut.
- ▶ The shank's concentricity must be less than h6.

Product information:

- ▶ Substitution for point 5 types is acceptable; price needs to be quoted additionally.
- ▶ ER8, ER11 and ER50 collets are packed with wooden boxes; ER16, ER20, ER25, ER32 and ER40 with plastic boxes.
- ▶ Collets of special sizes could be ordered by request.

ER MILLING CHUCK SET

ER 銑床夾頭組

(DIN ISO 15488)



MODEL NO.	TYPE	COLLET SIZE / mm	DRAW BAR	WEIGHT (KGS)
04902	MTB3 x ER32 x 6PCS	6, 8, 10, 12, 16, 20	M12 x 1.75P, 1/2" - 12	2.50
04903	MTB4 x ER32 x 6PCS	6, 8, 10, 12, 16, 20	M16 x 2.0P, 5/8" - 11	2.70
04904	R8 x ER32 x 6PCS	6, 8, 10, 12, 16, 20	7/16" - 20	2.60
04905	NT30 x ER32 x 6PCS	6, 8, 10, 12, 16, 20	M12 x 1.75P, 1/2" - 12	2.40
04907	MTB3 x ER40 x 7PCS	6, 8, 10, 12, 16, 20, 25	M12 x 1.75P, 1/2" - 12	4.10
04908	MTB4 x ER40 x 7PCS	6, 8, 10, 12, 16, 20, 25	M16 x 2.0P, 5/8" - 11	4.00
04909	R8 x ER40 x 7PCS	6, 8, 10, 12, 16, 20, 25	7/16" - 20	3.90
04910	NT30 x ER40 x 7PCS	6, 8, 10, 12, 16, 20, 25	M12 x 1.75P, 1/2" - 12	3.80
04911	NT40 x ER40 x 7PCS	6, 8, 10, 12, 16, 20, 25	M16 x 2.0P, 5/8" - 11	3.90
04913	MTB3 x ER32 x 18PCS	3, 4, 5, 6, 7, 8, 9, 10, 11, 12, 13, 14, 15, 16, 17, 18, 19, 20	M12 x 1.75P, 1/2" - 12	4.00
04914	MTB4 x ER32 x 18PCS	3, 4, 5, 6, 7, 8, 9, 10, 11, 12, 13, 14, 15, 16, 17, 18, 19, 20	M16 x 2.0P, 5/8" - 11	4.15
04915	R8 x ER32 x 18PCS	3, 4, 5, 6, 7, 8, 9, 10, 11, 12, 13, 14, 15, 16, 17, 18, 19, 20	7/16" - 20	4.00
04916	NT30 x ER32 x 18PCS	3, 4, 5, 6, 7, 8, 9, 10, 11, 12, 13, 14, 15, 16, 17, 18, 19, 20	M12 x 1.75P, 1/2" - 12	4.00
04917	NT40 x ER32 x 18PCS	3, 4, 5, 6, 7, 8, 9, 10, 11, 12, 13, 14, 15, 16, 17, 18, 19, 20	M16 x 2.0P, 5/8" - 11	4.30
04919	MTB4 x ER40 x 23PCS	4, 5, 6, 7, 8, 9, 10, 11, 12, 13, 14, 15, 16, 17, 18, 19, 20, 21, 22, 23, 24, 25, 26	M16 x 2.0P, 5/8" - 11	8.45
04920	R8 x ER40 x 23PCS	4, 5, 6, 7, 8, 9, 10, 11, 12, 13, 14, 15, 16, 17, 18, 19, 20, 21, 22, 23, 24, 25, 26	7/16" - 20	8.30
04921	NT30 x ER40 x 23PCS	4, 5, 6, 7, 8, 9, 10, 11, 12, 13, 14, 15, 16, 17, 18, 19, 20, 21, 22, 23, 24, 25, 26	M12 x 1.75P, 1/2" - 12	8.00
04922	NT40 x ER40 x 23PCS	4, 5, 6, 7, 8, 9, 10, 11, 12, 13, 14, 15, 16, 17, 18, 19, 20, 21, 22, 23, 24, 25, 26	M16 x 2.0P, 5/8" - 11	8.45
04923	NT50 x ER40 x 23PCS	4, 5, 6, 7, 8, 9, 10, 11, 12, 13, 14, 15, 16, 17, 18, 19, 20, 21, 22, 23, 24, 25, 26	M24 x 3.0P, 1" - 8	11.25
04925	NT40 x ER50 x 17PCS	6, 7, 8, 9, 10, 12, 14, 16, 18, 20, 22, 24, 26, 28, 30, 32, 34	M16 x 2.0P, 5/8" - 11	9.15
04926	NT50 x ER50 x 17PCS	6, 7, 8, 9, 10, 12, 14, 16, 18, 20, 22, 24, 26, 28, 30, 32, 34	M24 x 3.0P, 1" - 8	11.95
04930	MTB3 x ER40 x 15PCS	4, 5, 6, 8, 10, 12, 13, 15, 16, 18, 20, 21, 23, 25, 26	M12 x 1.75P, 1/2" - 12	6.45
04931	MTB4 x ER40 x 15PCS	4, 5, 6, 8, 10, 12, 13, 15, 16, 18, 20, 21, 23, 25, 26	M16 x 2.0P, 5/8" - 11	6.45
04932	R8 x ER40 x 15PCS	4, 5, 6, 8, 10, 12, 13, 15, 16, 18, 20, 21, 23, 25, 26	7/16" - 20	6.30
04933	NT30 x ER40 x 15PCS	4, 5, 6, 8, 10, 12, 13, 15, 16, 18, 20, 21, 23, 25, 26	M12 x 1.75P, 1/2" - 12	6.00
04934	NT40 x ER40 x 15PCS	4, 5, 6, 8, 10, 12, 13, 15, 16, 18, 20, 21, 23, 25, 26	M16 x 2.0P, 5/8" - 11	6.45
04935	NT50 x ER40 x 15PCS	4, 5, 6, 8, 10, 12, 13, 15, 16, 18, 20, 21, 23, 25, 26	M24 x 3.0P, 1" - 8	9.25

Product information:

- ▶ Whole set=(ER Collet x Q'ty)+spanner+body+plastic box.
- ▶ Please inform Draw Bar's thread when making an order.



STRAIGHT SHANK ER COLLET CHUCK SET

直柄 ER 夾頭組

(DIN ISO 15488)



MODEL NO.	TYPE	WEIGHT (KGS)	MODEL NO.	TYPE	WEIGHT (KGS)
05006	C16 x ER16A - 50 x 10PCS	1.40	05032	C25 x ER40 - 50 x 7PCS	5.35
05007	C16 x ER16A - 100 x 10PCS	1.48	05033	C25 x ER40 - 50 x 23PCS	9.35
05008	C16 x ER16A - 150 x 10PCS	1.56	05034	C32 x ER32 - 60 x 6PCS	3.25
05010	C20 x ER16A - 50 x 10PCS	1.50	05035	C32 x ER32 - 60 x 18PCS	4.45
05011	C20 x ER16A - 100 x 10PCS	1.60	05036	C32 x ER40 - 50 x 7PCS	5.48
05012	C20 x ER16A - 150 x 10PCS	1.70	05037	C32 x ER40 - 50 x 23PCS	9.48
05014	C20 x ER20A - 60 x 12PCS	1.71	05054	5/8" x ER11A - 140 x 13PCS	1.36
05015	C20 x ER20A - 120 x 12PCS	1.76	05039	5/8" x ER16A - 60 x 10PCS	1.42
05016	C20 x ER20A - 180 x 12PCS	1.88	05040	3/4" x ER16A - 50 x 10PCS	1.50
05018	C20 x ER25 - 50 x 15PCS	2.42	05041	3/4" x ER16A - 100 x 10PCS	1.60
05019	C20 x ER25 - 100 x 15PCS	2.55	05056	3/4" x ER16A - 140 x 10PCS	1.55
05021	C20 x ER32 - 50 x 6PCS	2.42	05058	1" x ER20A - 140 x 12 PCS	1.98
05022	C20 x ER32 - 100 x 6PCS	2.52	05042	1" x ER25 - 50 x 15PCS	2.85
05024	C20 x ER32 - 50 x 18PCS	3.62	05043	1" x ER32 - 50 x 6PCS	3.00
05025	C20 x ER32 - 100 x 18PCS	3.72	05044	1" x ER32 - 50 x 18PCS	4.20
05027	C25 x ER25 - 50 x 15PCS	3.10	05045	1" x ER40 - 50 x 7PCS	5.35
05028	C25 x ER25 - 100 x 15PCS	3.23	05046	1" x ER40 - 50 x 23PCS	9.35
05030	C25 x ER32 - 50 x 6PCS	3.00	05047	1-1/4" x ER32 - 60 x 6PCS	3.15
05031	C25 x ER32 - 50 x 18PCS	4.20	05048	1-1/4" x ER32 - 60 x 18PCS	4.35

STRAIGHT SHANK ER TAPPER (FOR CNC LATHE)

MODEL NO.	TYPE	COLLET / mm	TYPPER	WEIGHT (KGS)
05210	TP20 x 7PCS / SET	4, 5, 6, 7, 9, 12, 13	M3 ~ M16	1.22
05220	TP32 x 10PCS / SET	4, 5, 6, 7, 9, 12, 13, 15, 19, 20	M3 ~ M27	3.90
05230	TPM320 x 7PCS / SET	4, 5, 6, 7, 9, 12, 13 mm	M3 ~ M16	1.50
05240	TPM420 x 7PCS / SET	4, 5, 6, 7, 9, 12, 13	M3 ~ M16	1.70
05250	TPM432 x 10PCS / SET	4, 5, 6, 7, 9, 12, 13, 15, 19, 20	M3 ~ M27	4.10

Product information:

- ▶ Whole set=(ER Collet x Q'ty)+spanner+body+plastic box.
- ▶ It is acceptable to order a set for the sizes selected by request.

MILLING CHUCK SET

銑床夾頭組



MODEL NO.	TYPE	DRAW BAR		COLLET SET	WEIGHT (KGS)
83802	MTB2 x EOC25 x 7M x SYOZ	3/8" - 16	M10 x 1.5P	6, 8, 10, 12, 16, 20, 25mm	3.40
83803	MTB3 x EOC25 x 7M x SYOZ	1/2" - 12	M12 x 1.75P	6, 8, 10, 12, 16, 20, 25mm	3.80
83804	MTB4 x EOC25 x 7M x SYOZ	5/8" - 11	M16 x 2.0P	6, 8, 10, 12, 16, 20, 25mm	4.00
83808	R8 x EOC25 x 7M x SYOZ	7/16" - 20		6, 8, 10, 12, 16, 20, 25mm	3.70
83830	NT30 x EOC25 x 7M x SYOZ	1/2" - 12	M12 x 1.75P	6, 8, 10, 12, 16, 20, 25mm	3.50
83840	NT40 x EOC25 x 7M x SYOZ	5/8" - 11	M16 x 2.0P	6, 8, 10, 12, 16, 20, 25mm	3.80
83850	NT50 x EOC25 x 7M x SYOZ	1" - 8	M24 x 3.0P	6, 8, 10, 12, 16, 20, 25mm	6.20
83812	MTB2 x EOC25 x 7I x SYOZ	3/8" - 16	M10 x 1.5P	1/4", 5/16", 3/8", 1/2", 5/8", 3/4", 1"	3.50
83813	MTB3 x EOC25 x 7I x SYOZ	1/2" - 12	M12 x 1.75P	1/4", 5/16", 3/8", 1/2", 5/8", 3/4", 1"	3.55
83814	MTB4 x EOC25 x 7I x SYOZ	5/8" - 11	M16 x 2.0P	1/4", 5/16", 3/8", 1/2", 5/8", 3/4", 1"	3.70
83818	R8 x EOC25 x 7I x SYOZ	7/16" - 20		1/4", 5/16", 3/8", 1/2", 5/8", 3/4", 1"	3.90
83831	NT30 x EOC25 x 7I x SYOZ	1/2" - 12 M12 x 1.75P	U. S. A. 1/2" - 13	1/4", 5/16", 3/8", 1/2", 5/8", 3/4", 1"	3.60
83841	NT40 x EOC25 x 7I x SYOZ	5/8" - 11	M16 x 2.0P	1/4", 5/16", 3/8", 1/2", 5/8", 3/4", 1"	4.00
83849	NT50 x EOC25 x 7I x SYOZ	1" - 8	M24 x 3.0P	1/4", 5/16", 3/8", 1/2", 5/8", 3/4", 1"	6.80
83851	MTB2 x EOC25 x 15M x SYOZ	3/8" - 16	M10 x 1.5P	3, 4, 5, 6, 7, 8, 9, 10, 11, 12, 13, 16, 18, 20, 25mm	4.90
83852	MTB3 x EOC25 x 15M x SYOZ	1/2" - 12	M12 x 1.75P	3, 4, 5, 6, 7, 8, 9, 10, 11, 12, 13, 16, 18, 20, 25mm	5.20
83853	MTB4 x EOC25 x 15M x SYOZ	5/8" - 11	M16 x 2.0P	3, 4, 5, 6, 7, 8, 9, 10, 11, 12, 13, 16, 18, 20, 25mm	5.70
83854	R8 x EOC25 x 15M x SYOZ	7/16" - 20		3, 4, 5, 6, 7, 8, 9, 10, 11, 12, 13, 16, 18, 20, 25mm	5.30
83855	NT30 x EOC25 x 15M x SYOZ	1/2" - 12	M12 x 1.75P	3, 4, 5, 6, 7, 8, 9, 10, 11, 12, 13, 16, 18, 20, 25mm	5.00
83856	NT40 x EOC25 x 15M x SYOZ	5/8" - 11	M16 x 2.0P	3, 4, 5, 6, 7, 8, 9, 10, 11, 12, 13, 16, 18, 20, 25mm	5.40
83857	NT50 x EOC25 x 15M x SYOZ	1" - 8 or	M24 x 3.0P	3, 4, 5, 6, 7, 8, 9, 10, 11, 12, 13, 16, 18, 20, 25mm	7.60
83871	MTB2 x EOC25 x 15I x SYOZ	3/8" - 16	M10 x 1.5P	1/8", 3/16", 1/4", 5/16", 3/8", 7/16", 1/2", 9/16", 5/8", 11/16", 3/4", 13/16", 7/8", 15/16", 1"	4.90
83872	MTB3 x EOC25 x 15I x SYOZ	1/2" - 12	M12 x 1.75P	1/8", 3/16", 1/4", 5/16", 3/8", 7/16", 1/2", 9/16", 5/8", 11/16", 3/4", 13/16", 7/8", 15/16", 1"	5.20
83873	MTB4 x EOC25 x 15I x SYOZ	5/8" - 11	M16 x 2.0P	1/8", 3/16", 1/4", 5/16", 3/8", 7/16", 1/2", 9/16", 5/8", 11/16", 3/4", 13/16", 7/8", 15/16", 1"	5.70
83874	R8 x EOC25 x 15I x SYOZ	7/16" - 20		1/8", 3/16", 1/4", 5/16", 3/8", 7/16", 1/2", 9/16", 5/8", 11/16", 3/4", 13/16", 7/8", 15/16", 1"	5.30
83875	NT30 x EOC25 x 15I x SYOZ	1/2" - 12 M12 x 1.75P	U. S. A. 1/2" - 13	1/8", 3/16", 1/4", 5/16", 3/8", 7/16", 1/2", 9/16", 5/8", 11/16", 3/4", 13/16", 7/8", 15/16", 1"	5.00
83876	NT40 x EOC25 x 15I x SYOZ	5/8" - 11	M16 x 2.0P	1/8", 3/16", 1/4", 5/16", 3/8", 7/16", 1/2", 9/16", 5/8", 11/16", 3/4", 13/16", 7/8", 15/16", 1"	5.40
83877	NT50 x EOC25 x 15I x SYOZ	1" - 8	M24 x 3.0P	1/8", 3/16", 1/4", 5/16", 3/8", 7/16", 1/2", 9/16", 5/8", 11/16", 3/4", 13/16", 7/8", 15/16", 1"	7.60

Product information:

- ▶ Complete sets use SYOZ collet. ▶ Packed with plastic box, Wooden box package is different price.
- ▶ Please indicate the collet chuck measurements in inch or metric system and 7pcs/set or 15pcs/set.
- ▶ Please specify the draw bar's size when making an order. ▶ NT50 packed by wooden box.
- ▶ Concentric end mill extending 25mm with concentricity at 0.02mm.
- ▶ Interior device with upper contracting to keep cutter never be shrunk.
- ▶ Enclosed one Spanner and Plastic case or wooden case for every set. ▶ The body Screw is Ground.



EOC 32 MILLING CHUCK SET

EOC32 銑床夾頭組

(DIN ISO 10897)



8 PCS OR 16 PCS/SET EOC32 MILLING CHUCK / MM SIZE

MODEL NO.	TYPE	DRAW BAR		COLLET SET	WEIGHT (KGS)
83924	MTB4 x EOC32 x 8M x B	5/8" - 11	M16 x 2.0P	6, 8, 10, 12, 16, 20, 25, 32	6.50
83926	MTB5 x EOC32 x 8M x B	1" - 8	M24 x 3.0P	6, 8, 10, 12, 16, 20, 25, 32	9.07
83930	NT40 x EOC32 x 8M x B	5/8" - 11	M16 x 2.0P	6, 8, 10, 12, 16, 20, 25, 32	6.50
83932	NT50 x EOC32 x 8M x B	1" - 8	M24 x 3.0P	6, 8, 10, 12, 16, 20, 25, 32	9.45
83944	MTB4 x EOC32 x 16M x B	5/8" - 11	M16 x 2.0P	5, 6, 7, 8, 9, 10, 11, 12, 13, 14, 15, 16, 18, 20, 25, 32	10.70
83946	MTB5 x EOC32 x 16M x B	1" - 8	M24 x 3.0P	5, 6, 7, 8, 9, 10, 11, 12, 13, 14, 15, 16, 18, 20, 25, 32	12.27
83950	NT40 x EOC32 x 16M x B	5/8" - 11	M16 x 2.0P	5, 6, 7, 8, 9, 10, 11, 12, 13, 14, 15, 16, 18, 20, 25, 32	10.80
83952	NT50 x EOC32 x 16M x B	1" - 8	M24 x 3.0P	5, 6, 7, 8, 9, 10, 11, 12, 13, 14, 15, 16, 18, 20, 25, 32	12.65

8 PCS/SET EOC32 MILLING CHUCK / INCHES

83964	MTB4 x EOC32 x 8I x B	5/8" W11	1/4", 5/16", 3/8", 1/2", 5/8", 3/4", 1", 1-1/4"	6.50
83966	MTB5 x EOC32 x 8I x B	1" W8	1/4", 5/16", 3/8", 1/2", 5/8", 3/4", 1", 1-1/4"	9.07
83970	NT40 x EOC32 x 8I x B	5/8" W11	1/4", 5/16", 3/8", 1/2", 5/8", 3/4", 1", 1-1/4"	6.50
83972	NT50 x EOC32 x 8I x B	1" W8	1/4", 5/16", 3/8", 1/2", 5/8", 3/4", 1", 1-1/4"	9.45

Product information:

- ▶ Please specify the draw bar's size when making an order.
- ▶ Complete set packaged by plastic box, but NT50 by wooden box.
- ▶ Set: includes body + (collet x Q'ty) + spanner + packing box.
- ▶ Max. clamping capacity: 32mm or 1-1/4".
- ▶ COLLET TYPE: EOC 32 - B.

TG 100 MILLING CHUCK SET

TG 100 銑床夾頭組



MODEL NO.	TYPE	DRAW BAR		COLLET	WEIGHT (KGS)
84072	MTB3 x TG100 x 7M	1/2" - 12	M12 x 1.75P	6, 8, 10, 12, 16, 20, 25	3.95
84073	MTB4 x TG100 x 7M	5/8" - 11	M16 x 2.0P	6, 8, 10, 12, 16, 20, 25	4.10
84074	R8 x TG100 x 7M	7/16" - 20		6, 8, 10, 12, 16, 20, 25	4.30
84075	NT30 x TG100 x 7M	1/2" - 12	M12 x 1.75P	6, 8, 10, 12, 16, 20, 25	4.00
84076	NT40 x TG100 x 7M	5/8" - 11	M16 x 2.0P	6, 8, 10, 12, 16, 20, 25	4.40
84077	NT50 x TG100 x 7M	1" - 8	M24 x 3.0P	6, 8, 10, 12, 16, 20, 25	6.80
84079	MTB3 x TG100 x 7I	1/2" - 12	M12 x 1.75P	1/4", 5/16", 3/8", 1/2", 5/8", 3/4", 1"	3.95
84080	MTB4 x TG100 x 7I	5/8" - 11	M16 x 2.0P	1/4", 5/16", 3/8", 1/2", 5/8", 3/4", 1"	4.10
84081	R8 x TG100 x 7I	7/16" - 20		1/4", 5/16", 3/8", 1/2", 5/8", 3/4", 1"	4.30
84082	NT30 x TG100 x 7I	1/2" - 12	M12 x 1.75P	1/4", 5/16", 3/8", 1/2", 5/8", 3/4", 1"	4.00
84083	NT40 x TG100 x 7I	5/8" - 11	M16 x 2.0P	1/4", 5/16", 3/8", 1/2", 5/8", 3/4", 1"	4.40
84084	NT50 x TG100 x 7I	1" - 8	M24 x 3.0P	1/4", 5/16", 3/8", 1/2", 5/8", 3/4", 1"	6.80
84086	MTB3 x TG100 x 15M	1/2" - 12	M12 x 1.75P	3, 4, 5, 6, 7, 8, 9, 10, 11, 12, 13, 16, 18, 20, 25	5.75
84087	MTB4 x TG100 x 15M	5/8" - 11	M16 x 2.0P	3, 4, 5, 6, 7, 8, 9, 10, 11, 12, 13, 16, 18, 20, 25	5.90
84088	R8 x TG100 x 15M	7/16" - 20		3, 4, 5, 6, 7, 8, 9, 10, 11, 12, 13, 16, 18, 20, 25	6.10
84089	NT30 x TG100 x 15M	1/2" - 12	M12 x 1.75P	3, 4, 5, 6, 7, 8, 9, 10, 11, 12, 13, 16, 18, 20, 25	5.80
84090	NT40 x TG100 x 15M	5/8" - 11	M16 x 2.0P	3, 4, 5, 6, 7, 8, 9, 10, 11, 12, 13, 16, 18, 20, 25	6.20
84091	NT50 x TG100 x 15M	1" - 8	M24 x 3.0P	3, 4, 5, 6, 7, 8, 9, 10, 11, 12, 13, 16, 18, 20, 25	9.00
84093	MTB3 x TG100 x 15I	1/2" - 12	M12 x 1.75P	1/8", 3/16", 1/4", 5/16", 3/8", 7/16", 1/2", 9/16", 5/8", 11/16", 3/4", 13/16", 7/8", 15/16", 1"	5.75
84094	MTB4 x TG100 x 15I	5/8" - 11	M16 x 2.0P	1/8", 3/16", 1/4", 5/16", 3/8", 7/16", 1/2", 9/16", 5/8", 11/16", 3/4", 13/16", 7/8", 15/16", 1"	5.90
84095	R8 x TG100 x 15I	7/16" - 20		1/8", 3/16", 1/4", 5/16", 3/8", 7/16", 1/2", 9/16", 5/8", 11/16", 3/4", 13/16", 7/8", 15/16", 1"	6.10
84096	NT30 x TG100 x 15I	1/2" - 12	M12 x 1.75P	1/8", 3/16", 1/4", 5/16", 3/8", 7/16", 1/2", 9/16", 5/8", 11/16", 3/4", 13/16", 7/8", 15/16", 1"	5.80
84097	NT40 x TG100 x 15I	5/8" - 11	M16 x 2.0P	1/8", 3/16", 1/4", 5/16", 3/8", 7/16", 1/2", 9/16", 5/8", 11/16", 3/4", 13/16", 7/8", 15/16", 1"	6.20
84098	NT50 x TG100 x 15I	1" - 8	M24 x 3.0P	1/8", 3/16", 1/4", 5/16", 3/8", 7/16", 1/2", 9/16", 5/8", 11/16", 3/4", 13/16", 7/8", 15/16", 1"	9.00

Product information:

- ▶ Please inform if the collet chuck measurements are in inch or metric system and 7 pcs/set or 15 pcs/set.
- ▶ Please inform the draw bar's size when making an order.
- ▶ Concentric end mill extending 25mm with concentricity at 0.01mm.
- ▶ T thread of nut and TG collet make cutting tools be clamped tightly.
- ▶ Enclosed one Spanner, Shank, wooden box and full set collets.
- ▶ The body Screw is ground.



SKS.SBL.MLD COLLET CHUCK FULL SET

SKS/SBL/MLD 銑床夾頭組



MODEL NO.	TYPE	COLLET SIZE / mm	MODEL NO.	TYPE	COLLET SIZE / mm
18338-6P	BT40 x SKS6 x 6PCS	3.5, 4, 4.5, 5, 5.5, 6	18866-4P	BT40 x SBL6 x 4PCS	3, 4, 5, 6
18340-6P	BT40 x SKS10 x 6PCS	3.5, 4, 5, 6, 8, 10	18870-6P	BT40 x SBL12 x 6PCS	3, 5, 6, 8, 10, 12
18343-6P	BT40 x SKS13 x 6PCS	3.5, 5, 6, 8, 10, 12	18874-6P	BT40 x SBL20 x 6PCS	3, 6, 8, 10, 12, 20
18344-6P	BT40 x SKS16 x 6PCS	3.5, 6, 8, 10, 12, 16	18877-6P	BT40 x SBL25 x 6PCS	8, 10, 12, 16, 20, 25
18348-6P	BT40 x SKS20 x 6PCS	6, 8, 10, 12, 16, 20	23654-4P	CAT40 x SBL6 x 4PCS	3, 4, 5, 6
18352-6P	BT40 x SKS25 x 6PCS	8, 10, 12, 16, 20, 25	23660-6P	CAT40 x SBL12 x 6PCS	3, 5, 6, 8, 10, 12
23712-6P	CAT40 x SKS6 x 6PCS	3.5, 4, 4.5, 5, 5.5, 6	23666-6P	CAT40 x SBL20 x 6PCS	3, 6, 8, 10, 12, 20
23716-6P	CAT40 x SKS10 x 6PCS	3.5, 4, 5, 6, 8, 10	23671-6P	CAT40 x SBL25 x 6PCS	8, 10, 12, 16, 20, 25
23720-6P	CAT40 x SKS13 x 6PCS	3.5, 5, 6, 8, 10, 12	45368-4P	DAT40 x SBL6 x 4PCS	3, 4, 5, 6
23722-6P	CAT40 x SKS16 x 6PCS	3.5, 6, 8, 10, 12, 16	45372-6P	DAT40 x SBL12 x 6PCS	3, 5, 6, 8, 10, 12
23726-6P	CAT40 x SKS20 x 6PCS	6, 8, 10, 12, 16, 20	45376-6P	DAT40 x SBL20 x 6PCS	3, 6, 8, 10, 12, 20
23732-6P	CAT40 x SKS25 x 6PCS	8, 10, 12, 16, 20, 25	45379-6P	DAT40 x SBL25 x 6PCS	8, 10, 12, 16, 20, 25
43010-6P	DAT40 x SKS6 x 6PCS	3.5, 4, 4.5, 5, 5.5, 6	15902G-5P	BT30 x MLD20 - 80 x 5PCS	6, 8, 10, 12, 16
43012-6P	DAT40 x SKS10 x 6PCS	3.5, 4, 5, 6, 8, 10	15922G-7P	BT40 x MLD32 - 95 x 7PCS	6, 8, 10, 12, 16, 20, 25
43015-6P	DAT40 x SKS13 x 6PCS	3.5, 5, 6, 8, 10, 12	15936G-105-7P	BT50 x MLD32 - 105 x 7PCS	6, 8, 10, 12, 16, 20, 25
43016-6P	DAT40 x SKS16 x 6PCS	3.5, 6, 8, 10, 12, 16	15940G-8P	BT50 x MLD42 - 105 x 8PCS	6, 8, 10, 12, 16, 20, 25, 32
43020-6P	DAT40 x SKS20 x 6PCS	6, 8, 10, 12, 16, 20			
43026-6P	DAT40 x SKS25 x 6PCS	8, 10, 12, 16, 20, 25			

Product information:

► Set: includes body + (collet x Q'ty) + spanner + packing box.

EBL COLLET CHUCK FULL SET

EBL 後拉式立銑刀夾頭組



MODEL NO.	TYPE	COLLET SIZE / mm
16922 - 4P	BT40 x EBL6 x 4PCS	3, 4, 5, 6
16924 - 4P	BT40 x EBL8 x 5PCS	3, 4, 5, 6, 8
26922 - 4P	CAT40 x EBL6 x 4PCS	3, 4, 5, 6
26924 - 4P	CAT40 x EBL8 x 5PCS	3, 4, 5, 6, 8
46922 - 4P	DAT40 x EBL6 x 4PCS	3, 4, 5, 6
46924 - 4P	DAT40 x EBL8 x 5PCS	3, 4, 5, 6, 8

Product information:

▶ Set: includes body + (collet x Q'ty) + spanner + packing box.



MEMO

A series of 18 horizontal grey bars for writing a memo.



TECHNICAL INFORMATION CATEGORY

BALANCE STANDARD FORMULA LIST

Y-2

REFERENCE DETAILS

Y-3~5

BALANCE STANDARD FORMULA LIST

Balance Grade		G0.4	G1	G2.5	G6.3	G16	G40	G100	G250	G630	G1600	G4000
Precision Required	exw (mm/s)	0.4	1	2.5	6.3	16	40	100	250	630	1600	4000
Precision Required	exw (µm *rpm)	3820	9549	23875	60165	152800	382000	954900	2387500	6016500	15280000	38200000

SETTING OF THE BALANCE SERIES IS ACCORDING TO ISO 1940 STANDARD.

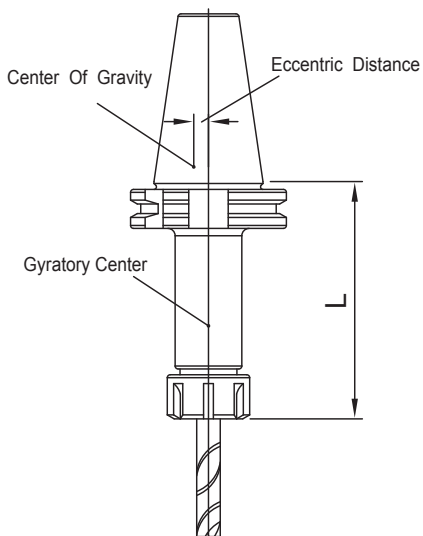
THE FORMULA AS FOLLOWS:

$$U = M \times e$$

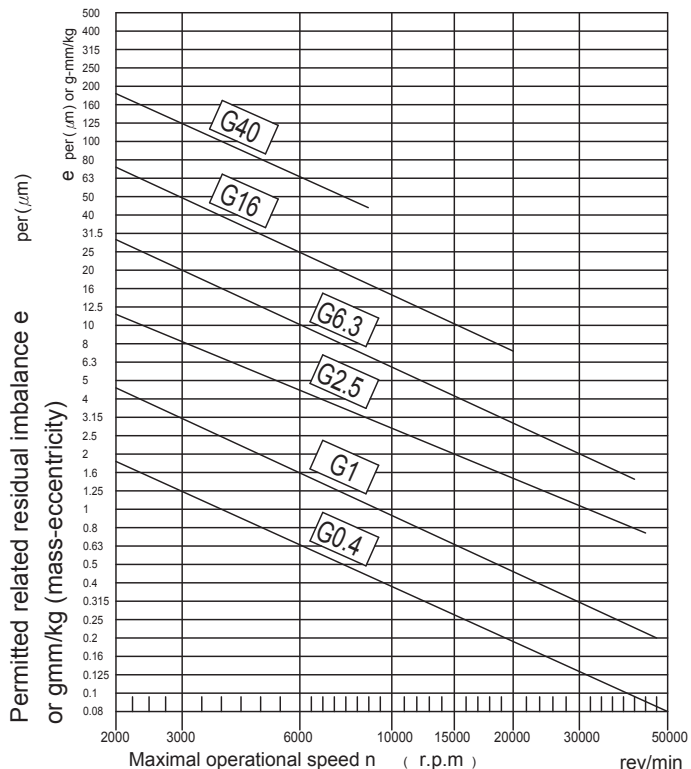
$$U = \frac{G \times M}{n} \times 9549$$

$$G = \frac{n \times U}{9549 \times M}$$

G = UNBALANCE SERIES
U = UNBALANCE (g-mm)
e = ECCENTRIC DISTANCE (mm)
M = ROTER WEIGHT (kg)
n = rpm
9549 = CONSTANT



Quality levels according to ISO 1940 and permitted residual imbalance or speed



REFERENCE DETAILS

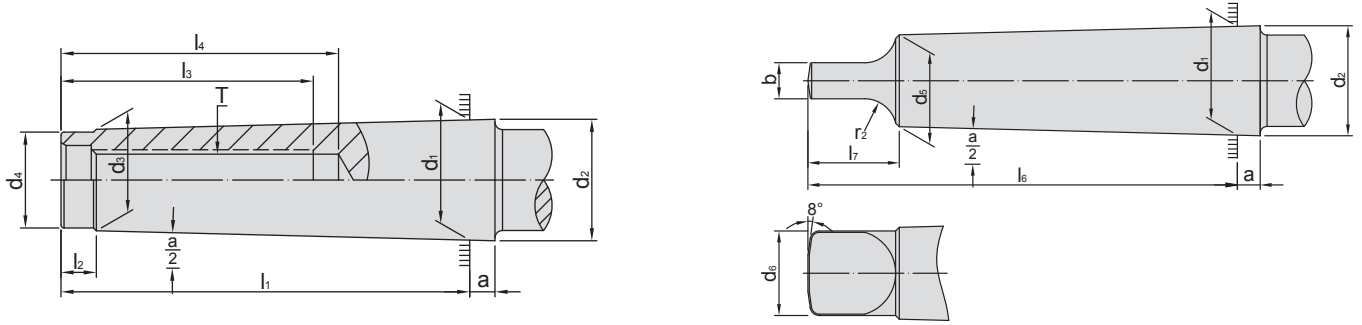
mm		H																	
		1	2	3	4	5	6	7	8	9	10	11	12	13	14 ¹⁾	15 ¹⁾	16 ¹⁾	17 ¹⁾	18 ¹⁾
Over	Under	μm											mm						
-	3 ¹⁾	+0.8 0	+1.2 0	+2 0	+3 0	+4 0	+6 0	+10 0	+14 0	+25 0	+40 0	+60 0	+0.1 0	+0.14 0	+0.25 0	+0.4 0	+0.6 0		
3	6	+1 0	+1.5 0	+2.5 0	+4 0	+5 0	+8 0	+12 0	+18 0	+30 0	+48 0	+75 0	+0.12 0	+0.18 0	+0.3 0	+0.48 0	+0.75 0	+1.2 0	+1.8 0
6	10	+1 0	+1.5 0	+2.5 0	+4 0	+6 0	+9 0	+15 0	+22 0	+36 0	+58 0	+90 0	+0.15 0	+0.22 0	+0.36 0	+0.58 0	+0.9 0	+1.5 0	+2.2 0
10	18	+1.2 0	+2 0	+3 0	+5 0	+8 0	+11 0	+18 0	+27 0	+43 0	+70 0	+110 0	+0.18 0	+0.27 0	+0.43 0	+0.7 0	+1.1 0	+1.8 0	+2.7 0
18	30	+1.5 0	+2.5 0	+4 0	+6 0	+9 0	+13 0	+21 0	+33 0	+52 0	+84 0	+130 0	+0.21 0	+0.33 0	+0.52 0	+0.84 0	+1.3 0	+2.1 0	+3.3 0
30	50	+1.5 0	+2.5 0	+4 0	+7 0	+11 0	+16 0	+25 0	+39 0	+62 0	+100 0	+160 0	+0.25 0	+0.39 0	+0.62 0	+1 0	+1.6 0	+2.5 0	+3.9 0
50	80	+2 0	+3 0	+5 0	+8 0	+13 0	+19 0	+30 0	+46 0	+74 0	+120 0	+190 0	+0.3 0	+0.46 0	+0.74 0	+1.2 0	+1.9 0	+3 0	+4.6 0
80	120	+2.5 0	+4 0	+6 0	+10 0	+15 0	+22 0	+35 0	+54 0	+87 0	+140 0	+220 0	+0.35 0	+0.54 0	+0.87 0	+1.4 0	+2.2 0	+3.5 0	+5.4 0
120	180	+3.5 0	+5 0	+8 0	+12 0	+18 0	+25 0	+40 0	+63 0	+100 0	+160 0	+250 0	+0.4 0	+0.63 0	+1 0	+1.6 0	+2.5 0	+4 0	+6.3 0
180	250	+4.5 0	+7 0	+10 0	+14 0	+20 0	+29 0	+46 0	+72 0	+115 0	+185 0	+290 0	+0.46 0	+0.72 0	+1.15 0	+1.85 0	+2.9 0	+4.6 0	+7.2 0
250	315	+6 0	+8 0	+12 0	+16 0	+23 0	+32 0	+52 0	+81 0	+130 0	+210 0	+320 0	+0.52 0	+0.81 0	+1.3 0	+2.1 0	+3.2 0	+5.2 0	+8.1 0
315	400	+7 0	+9 0	+13 0	+18 0	+25 0	+36 0	+57 0	+89 0	+140 0	+230 0	+360 0	+0.57 0	+0.89 0	+1.4 0	+2.3 0	+3.6 0	+5.7 0	+8.9 0
400	500	+8 0	+10 0	+15 0	+20 0	+27 0	+40 0	+63 0	+97 0	+155 0	+250 0	+400 0	+0.63 0	+0.97 0	+1.55 0	+2.5 0	+4 0	+6.3 0	+9.7 0

mm		h																	
		1	2	3	4	5	6	7	8	9	10	11	12	13	14 ¹⁾	15 ¹⁾	16 ¹⁾	17	18
Over	Under	μm											mm						
-	3 ¹⁾	0 -0.8	0 -1.2	0 -2	0 -3	0 -4	0 -6	0 -10	0 -14	0 -25	0 -40	0 -60	0 -0.1	0 -0.14	0 -0.25	0 -0.4	0 -0.6		
3	6	0 -1	0 -1.5	0 -2.5	0 -4	0 -5	0 -8	0 -12	0 -18	0 -30	0 -48	0 -75	0 -0.12	0 -0.18	0 -0.3	0 -0.48	0 -0.75	0 -1.2	0 -1.8
6	10	0 -1	0 -1.5	0 -2.5	0 -4	0 -6	0 -9	0 -15	0 -22	0 -36	0 -58	0 -90	0 -0.15	0 -0.22	0 -0.36	0 -0.58	0 -0.9	0 -1.5	0 -2.2
10	18	0 -1.2	0 -2	0 -3	0 -5	0 -8	0 -11	0 -18	0 -27	0 -43	0 -70	0 -110	0 -0.18	0 -0.27	0 -0.43	0 -0.7	0 -1.1	0 -1.8	0 -2.7
18	30	0 -1.5	0 -2.5	0 -4	0 -6	0 -9	0 -13	0 -21	0 -33	0 -52	0 -84	0 -130	0 -0.21	0 -0.33	0 -0.52	0 -0.84	0 -1.3	0 -2.1	0 -3.3
30	50	0 -1.5	0 -2.5	0 -4	0 -7	0 -11	0 -16	0 -25	0 -39	0 -62	0 -100	0 -160	0 -0.25	0 -0.39	0 -0.62	0 -1	0 -1.6	0 -2.5	0 -3.9
50	80	0 -2	0 -3	0 -5	0 -8	0 -13	0 -19	0 -30	0 -46	0 -74	0 -120	0 -190	0 -0.3	0 -0.46	0 -0.74	0 -1.2	0 -1.9	0 -3	0 -4.6
80	120	0 -2.5	0 -4	0 -6	0 -10	0 -15	0 -22	0 -35	0 -54	0 -87	0 -140	0 -220	0 -0.35	0 -0.54	0 -0.87	0 -1.4	0 -2.2	0 -3.5	0 -5.4
120	180	0 -3.5	0 -5	0 -8	0 -12	0 -18	0 -25	0 -40	0 -63	0 -100	0 -160	0 -250	0 -0.4	0 -0.63	0 -1	0 -1.6	0 -2.5	0 -4	0 -6.3
180	250	0 -4.5	0 -7	0 -10	0 -14	0 -20	0 -29	0 -46	0 -72	0 -115	0 -185	0 -290	0 -0.46	0 -0.72	0 -1.15	0 -1.85	0 -2.9	0 -4.6	0 -7.2
250	315	0 -6	0 -8	0 -12	0 -16	0 -23	0 -32	0 -52	0 -81	0 -130	0 -210	0 -320	0 -0.52	0 -0.81	0 -1.3	0 -2.1	0 -3.2	0 -5.2	0 -8.1
315	400	0 -7	0 -9	0 -13	0 -18	0 -25	0 -36	0 -57	0 -89	0 -140	0 -230	0 -360	0 -0.57	0 -0.89	0 -1.4	0 -2.3	0 -3.6	0 -5.7	0 -8.9
400	500	0 -8	0 -10	0 -15	0 -20	0 -27	0 -40	0 -63	0 -97	0 -155	0 -250	0 -400	0 -0.63	0 -0.97	0 -1.55	0 -2.5	0 -4	0 -6.3	0 -9.7



REFERENCE DETAILS

參考資料

**DIN 228 FORM A <Drawing Thread Type>**

M.T.NO.	a	d_1	d_2	d_3	d_4 max.	T	l_1 max.	l_2	l_3 min.	l_4 min.
2	5	17.78	18	14.6	14	3/8" 16W, M10 x 1.5P	64	5	24	31.5
3	5	23.825	24.1	19.8	19	1/2" 12W, M12 x 1.75P	81	7	24	33.5
4	6.5	31.267	31.6	25.9	25	5/8" 11W, M16 x 2.0P	102.5	9	32	42.5
5	6.5	44.399	44.7	37.6	35.7	1" 8W, M24 x 3.0P	129.5	10	40	52.5
6	8	63.348	63.8	53.9	51	1" 8W, M24 x 3.0P	182	16	47	61.5

DIN 228 FORM B <Tongue Type>

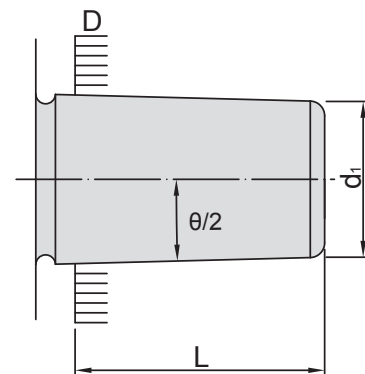
M.T.NO.	a	b $_{h13}$	d_5	d_6 max.	l_6 $_{0-1}$	l_7 max.	r_2	$\frac{\alpha}{2}$
2	5	6.3	14	13.5	75	16	6	1°25' 50"
3	5	7.9	19.1	18.5	94	20	7	1°26' 16"
4	6.5	11.9	25.2	24.5	117.5	24	8	1°29' 15"
5	6.5	15.9	36.5	35.7	149.5	29	10	1°30' 26"
6	8	19	52.4	51	210	40	13	1°29' 36"

JACOBS TAPER

TYPE	$\theta/2$ TAPER	D	d_1	L
JT 2	2° 19'52"	14.199	12.386	22.225
JT33	1° 49'01"	15.850	14.237	25.400
JT 6	1° 29'10"	17.170	15.852	25.400
JT 3	1° 31'26"	20.599	18.951	30.956
JT 4	1° 29'59"	28.550	26.346	42.069
JT 5	1° 29'05"	35.890	33.422	47.625

DIN 238

TYPE	$\theta/2$ TAPER	D	d_1	L
B12	1° 25'43"	12.065	11.1	18.5
B16	1° 25'50"	15.733	14.5	24.0
B18	1° 25'50"	17.780	16.2	32.0

DRILL CHUCK HOLE TAPER SPECIFICATION

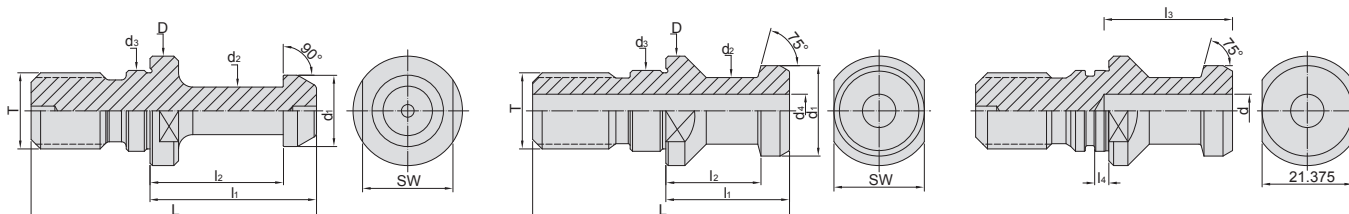
REFERENCE DETAILS

參考資料

MAS BT

DIN 69872 - A

DIN 69872 - B



MAS BT PULL STUDS SPECIFICATION

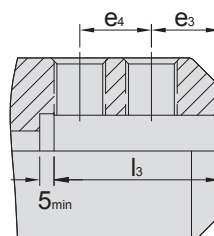
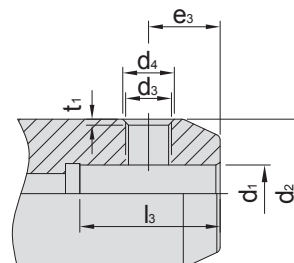
TYPE	D 0 -0.2	d_1 0 -0.1	d_2 0 -0.1	d_3 h7	L	l_1 0 -0.1	l_2 0 -0.1	θ $\pm 15^\circ$	SW 0 -0.35	T 6h	
BT30 - 45°	16.5	11	7	12.5	43	23	18	45°	13	M12 x 1.75P	P30T - 1
BT40 - 45°	23	15	10	17	60	35	28	45°	19	M16 x 2.0P	P40T - 1
BT50 - 45°	38	23	17	25	85	45	35	45°	30	M24 x 3.0P	P50T - 1
BT30 - 60°	16.5	11	7	12.5	43	23	18	60°	13	M12 x 1.75P	P30T - 2
BT40 - 60°	23	15	10	17	60	35	28	60°	19	M16 x 2.0P	P40T - 2
BT50 - 60°	38	23	17	25	85	45	35	60°	30	M24 x 3.0P	P50T - 2

DIN 69 872 A & B PULL STUDS SPECIFICATION

TYPE	D 0 -0.2	d_1 f7	d_2 0 -0.1	d_3 f7	d_4 $+0.1$ 0	L	l_1 ± 0.1	l_2 ± 0.1	l_3 $+1$ 0	l_4 0 -0.1	SW 0 -0.1	T
DAT30 - A	17	13	9	13	-	44	24	19	-	-	14	M12 x 1.75P
DAT40 - A	23	19	14	17	7	54	26	20	-	-	19	M16 x 2.0P
DAT50 - A	36	28	21	25	11.5	74	34	25	-	-	30	M24 x 3.0P
DAT30 - B	17	13	9	13	-	44	24	19	-	2.3	14	M12 x 1.75P
DAT40 - B	23	19	14	17	7	54	26	20	27	3.0	19	M16 x 2.0P
DAT50 - B	36	28	21	25	11.5	74	34	25	37	4.5	30	M24 x 3.0P

DIN 1835 - B END MILL HOLDER SPECIFICATION

SIZE	d_1 H5	d_2 0 -0.1	d_3 6H	d_4 MIN	l_3 ± 1	e_3 0 -0.1	e_4 ± 0.5	t_1
6	6	25	M6	8	35	18	-	1
8	8	28	M8	10	35	18	-	1.3
10	10	35	M10	12	39	20	-	1.5
12	12	42	M12	14	44	22.5	-	1.6
16	16	48	M14	16	47	24	-	1.7
20	20	52	M16	18	49	25	-	2.1
25	25	65	M18	20	54	24	25	2.1
32	32	72	M20	22	58	24	28	2.2
40	40	90	M24	26	68	30	32	2.2



MEMO

A series of 17 horizontal gray bars stacked vertically, intended for writing a memo.



MEMO

Blank lined area for writing a memo.



MEMO

Blank memo area consisting of 18 horizontal grey bars for writing.



MEMO

Blank lined area for writing a memo.



MEMO

Blank lined area for writing a memo.



MEMO

Blank lined area for writing a memo.

