

CAT CATEGORY

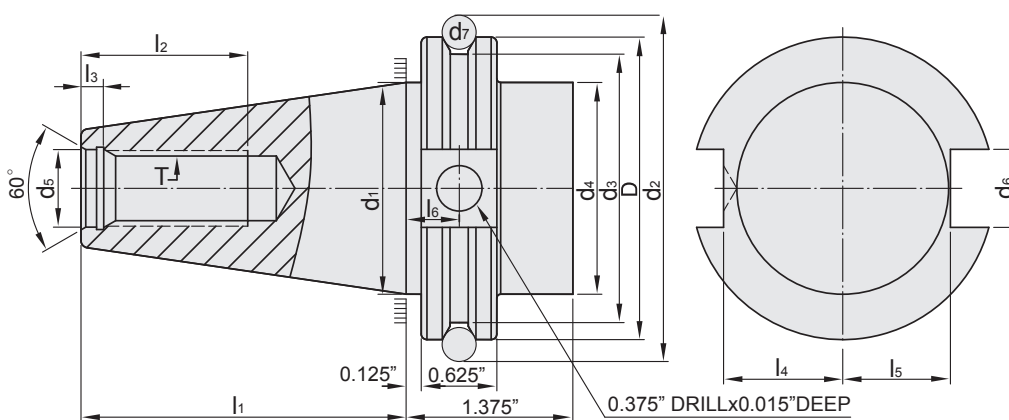
ANSI B5.50

PNER COLLET CHUCK	B-3
UT COLLET CHUCK	B-4
ER COLLET CHUCK	B-5~6
ER COLLET CHUCK [M TYPE]	B-7
SK3 COLLET CHUCK	B-8
SKS COLLET CHUCK	B-9
SBL SLIM-FIT COLLET CHUCK	B-10
SBLC SLIM-FIT COLLET CHUCK	B-11
EBL SLIM-FIT COLLET CHUCK	B-12
MLD MULTI-LOCK MILLING CHUCK	B-13
EOC COLLET CHUCK	B-14
TG COLLET CHUCK	B-15
SLN SIDE LOCK END MILL HOLDER	B-16
FACE MILL ARBOR	B-17
SPH DRILL CHUCK ADAPTER	B-18
SPU DRILL CHUCK ADAPTER	B-19
DRILL CHUCK ARBOR	B-20
EXPANSION ER TAPPER	B-21
SIDE LOCK OIL HOLE HOLDER	B-22
OHER OIL HOLE COLLET CHUCK	B-23
SOM SCREWED END MILL HOLDER	B-24
MORSE TAPER ADAPTER	B-25
ADAPTER	B-26
BLANK	B-27

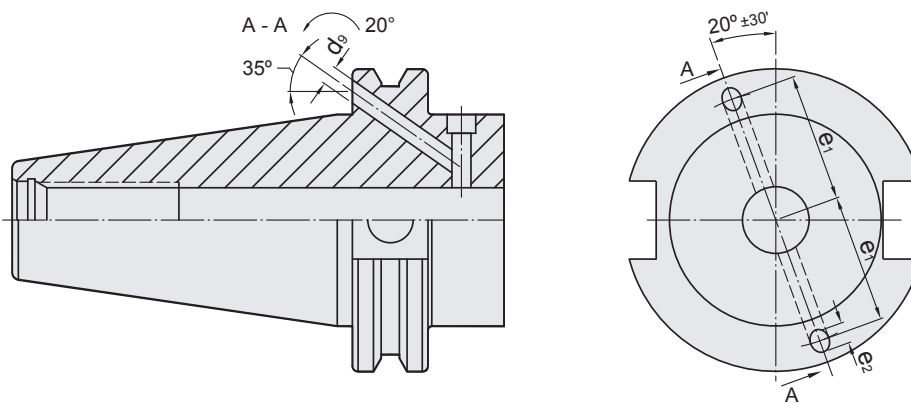
REFERENCE DETAILS

- ▶ Shank body standard : **ANSI B5.50**
- ▶ Taper tolerance < **AT3**
- ▶ Hardness > **HRC 56°**
- ▶ Surface roughness: Ra < **0.25 μm**
- ▶ Roundness < **0.8 μm**
- ▶ Carbon depth > **0.8mm**
- ▶ The shank has pre-balance at G6.3, and can provide precision balance at G2.5. It can be ordered by request.

ANSI B5.50/CAT A



ANSI B5.50/CAT AD+B



INCHES

CAT	D ±0.002	d ₁	d ₂ ±0.002	d ₃ ±0.01	d ₄ ±0.005	d ₅ +0.015 0	d ₆ ±0.01	d ₇	d ₉
30	1.812	1.250	2.176	1.531	1.250	0.516	0.645	0.2813	-
40	2.500	1.750	2.863	2.219	1.750	0.641	0.645	0.2813	0.157
45	3.250	2.250	3.613	2.969	2.250	0.766	0.770	0.2813	-
50	3.875	2.750	4.238	3.594	2.750	1.031	1.020	0.2813	0.236
CAT	l ₁ ±0.005	l ₂ min	l ₃ ±0.01	l ₄ +0 -0.015	l ₅ +0 -0.015	e ₁ ±0.1	e ₂ MAX	T UNC 2B	
30	1.875	1.00	0.188	0.735	0.640	-	-	1/2" - 13	
40	2.687	1.12	0.188	0.985	0.890	1.063	0.199	5/8" - 11	
45	3.250	1.50	0.188	1.235	1.140	-	-	3/4" - 10	
50	4.000	1.75	0.250	1.485	1.390	1.654	0.276	1" - 8	



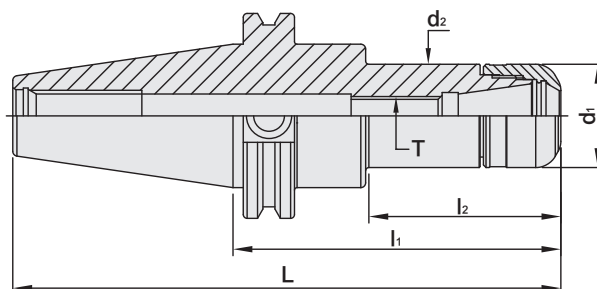
CAT / PNER COLLET CHUCK



CAT / PNER 立銑刀夾頭

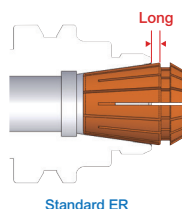
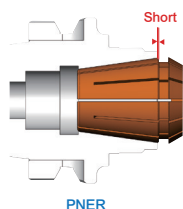
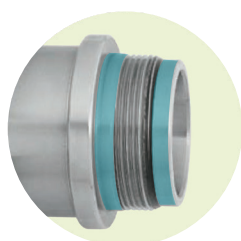


T W PAT NO. M298033
 T W PAT NO. M311791
 T W PAT NO. M501316
 J P PAT NO. 3128766
 J P PAT NO. 3200356
 K R PAT NO. 20-0433603
 C N PAT NO. ZL200620132661.0
 C H PAT NO. 696550
 T R PAT NO. TR 2007 02942 Y
 I T PAT NO. N.0000266731
 D E PAT NO.Nr.202015005621



INCHES

MODEL NO.	TYPE	L	l ₁	l ₂	d ₁	d ₂	T	SIZE RANGE	WEIGHT (KGS)
26714	CAT40 x PNER16 - 2.5"	5.187	2.5	1.06	1.18	1.18	M10 x 1.5P	0.125 ~ 0.375	1.05
26716	CAT40 x PNER16 - 4"	6.687	4	2.43	1.18	1.18	M10 x 1.5P	0.125 ~ 0.375	1.35
26716 - 5	CAT40 x PNER16 - 5"	7.687	5	3.43	1.18	1.18	M10 x 1.5P	0.125 ~ 0.375	1.65
26718	CAT40 x PNER20 - 3"	5.687	3	1.5	1.25	1.25	M12 x 1.75P	0.125 ~ 0.5	1.25
26720	CAT40 x PNER20 - 4"	6.687	4	2.5	1.25	1.25	M12 x 1.75P	0.125 ~ 0.5	1.65
26724	CAT40 x PNER25 - 4"	6.687	4	2.54	1.57	1.57	M16 x 2.0P	0.125 ~ 0.625	1.85
26726	CAT40 x PNER32 - 3"	5.687	3	1.51	1.96	1.96	M16 x 2.0P	0.125 ~ 0.75	1.16
26728	CAT40 x PNER32 - 4"	6.687	4	2.51	1.96	1.96	M16 x 2.0P	0.125 ~ 0.75	1.50
26728 - 5	CAT40 x PNER32 - 5"	7.687	5	3.51	1.96	1.96	M16 x 2.0P	0.125 ~ 0.75	1.75
26728 - 6	CAT40 x PNER32 - 6"	8.687	6	4.51	1.96	1.96	M16 x 2.0P	0.125 ~ 0.75	2.15
26732	CAT40 x PNER40 - 4"	6.687	4	2.26	2.48	2.48	M20 x 2.0P	0.25 ~ 1	1.80
26736	CAT50 x PNER16 - 4"	8	4	2.03	1.18	1.18	M10 x 1.5P	0.125 ~ 0.375	4.05
26738	CAT50 x PNER16 - 6"	10	6	4.03	1.18	1.18	M10 x 1.5P	0.125 ~ 0.375	4.40
26740	CAT50 x PNER20 - 4"	8	4	2.14	1.25	1.25	M12 x 1.75P	0.125 ~ 0.5	4.20
26742	CAT50 x PNER20 - 6"	10	6	4.14	1.25	1.25	M12 x 1.75P	0.125 ~ 0.5	4.45
26744	CAT50 x PNER25 - 4"	8	4	2.38	1.57	1.57	M16 x 2.0P	0.125 ~ 0.625	4.15
26746	CAT50 x PNER25 - 6"	10	6	4.38	1.57	1.57	M16 x 2.0P	0.125 ~ 0.625	4.50
26748	CAT50 x PNER32 - 4"	8	4	2.42	1.96	1.96	M16 x 2.0P	0.125 ~ 0.75	4.35
26750	CAT50 x PNER32 - 6"	10	6	4.42	1.96	1.96	M16 x 2.0P	0.125 ~ 0.75	4.60
26752	CAT50 x PNER40 - 4"	8	4	2.48	2.48	2.48	M20 x 2.0P	0.25 ~ 1	5.26
26754	CAT50 x PNER40 - 6"	10	6	4.48	2.48	2.48	M20 x 2.0P	0.25 ~ 1	6.36



Features:

- ▶ PN collet is well covered in PNER tool holder, improving overall runout accuracy and the machining stability.

Product information:

- ▶ Balance: G2.5 25,000 rpm. Higher balancing grade and revolution can be done upon request but additional charge is needed.
- ▶ AD+B type is available, please inform us when making an order.
- ▶ Use PN 3µm collet.

Standard Accessory: • NUT

Collet	Nut	Pull Stud	Preset Screw	Spanner
P.W-5	P.W-45	P.W-62	P.W-88	P.W-68~73



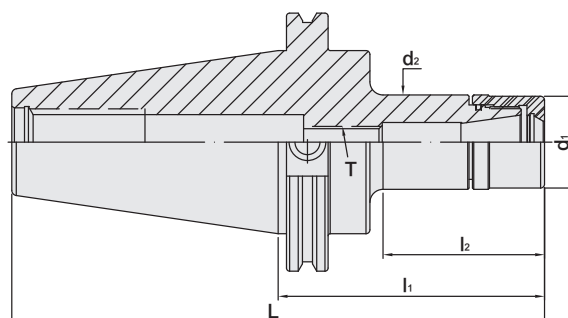
CAT / UT COLLET CHUCK



CAT / UT 立銑刀夾頭



T W PAT NO. M298033
 T W PAT NO. M311791
 J P PAT NO. 3128766
 K R PAT NO. 20-0433603
 C N PAT NO. ZL200620132661.0
 C H PAT NO. 696550
 T R PAT NO. TR 2007 02942 Y
 I T PAT NO. N.0000266731



INCHES

MODEL NO.	TYPE	L	l ₁	l ₂	d ₁	d ₂	T	SIZE RANGE	WEIGHT (KGS)
31.753.16.300	CAT40 x UT16 - 3"	5.687	3	1.583	1.181	1.181	M10 x 1.5P	0.0156 ~ 0.375	1.14
31.753.16.400	CAT40 x UT16 - 4"	6.687	4	2.175	1.181	1.181	M10 x 1.5P	0.0156 ~ 0.375	1.27
31.753.16.600	CAT40 x UT16 - 6"	8.687	6	4.175	1.181	1.181	M10 x 1.5P	0.0156 ~ 0.375	1.49
31.753.20.300	CAT40 x UT20 - 3"	5.687	3	1.583	1.378	1.417	M12 x 1.75P	0.0625 ~ 0.5	1.18
31.753.20.400	CAT40 x UT20 - 4"	6.687	4	2.374	1.378	1.417	M12 x 1.75P	0.0625 ~ 0.5	1.36
31.753.20.600	CAT40 x UT20 - 6"	8.687	6	4.374	1.378	1.417	M12 x 1.75P	0.0625 ~ 0.5	1.70
31.753.25.300	CAT40 x UT25 - 3"	5.687	3	1.574	1.653	1.653	M16 x 2.0P	0.0625 ~ 0.625	1.22
31.753.25.400	CAT40 x UT25 - 4"	6.687	4	2.546	1.653	1.653	M16 x 2.0P	0.0625 ~ 0.625	1.46
31.753.25.600	CAT40 x UT25 - 6"	8.687	6	4.546	1.653	1.653	M16 x 2.0P	0.0625 ~ 0.625	1.94
31.753.32.300	CAT40 x UT32 - 3"	5.687	3	1.622	1.890	1.890	M16 x 2.0P	0.125 ~ 0.75	1.22
31.753.32.400	CAT40 x UT32 - 4"	6.687	4	2.622	1.890	1.890	M16 x 2.0P	0.125 ~ 0.75	1.54
31.753.32.600	CAT40 x UT32 - 6"	8.687	6	4.622	1.890	1.890	M16 x 2.0P	0.125 ~ 0.75	2.19
32.753.16.300	CAT50 x UT16 - 3"	7	3	1.425	1.18	1.181	M10 x 1.5P	0.0156 ~ 0.375	3.15
32.753.16.400	CAT50 x UT16 - 4"	8	4	2.228	1.18	1.181	M10 x 1.5P	0.0156 ~ 0.375	3.23
32.753.16.600	CAT50 x UT16 - 6"	10	6	4.065	1.18	1.181	M10 x 1.5P	0.0156 ~ 0.375	3.55
32.753.20.300	CAT50 x UT20 - 3"	7	3	1.504	1.378	1.417	M12 x 1.75P	0.0625 ~ 0.5	3.21
32.753.20.400	CAT50 x UT20 - 4"	8	4	2.425	1.378	1.417	M12 x 1.75P	0.0625 ~ 0.5	3.35
32.753.20.600	CAT50 x UT20 - 6"	10	6	4.228	1.378	1.417	M12 x 1.75P	0.0625 ~ 0.5	3.68
32.753.25.300	CAT50 x UT25 - 3"	7	3	1.504	1.653	1.653	M16 x 2.0P	0.0625 ~ 0.625	3.25
32.753.25.400	CAT50 x UT25 - 4"	8	4	2.425	1.653	1.653	M16 x 2.0P	0.0625 ~ 0.625	3.46
32.753.25.600	CAT50 x UT25 - 6"	10	6	4.425	1.653	1.653	M16 x 2.0P	0.0625 ~ 0.625	3.87
32.753.32.300	CAT50 x UT32 - 3"	7	3	1.504	1.890	1.890	M16 x 2.0P	0.125 ~ 0.75	3.27
32.753.32.400	CAT50 x UT32 - 4"	8	4	2.425	1.890	1.890	M16 x 2.0P	0.125 ~ 0.75	3.56
32.753.32.600	CAT50 x UT32 - 6"	10	6	4.425	1.890	1.890	M16 x 2.0P	0.125 ~ 0.75	4.13

Product information:

- ▶ The pre-balance reaches G6.3 10,000 rpm. Higher balancing grade and revolution can be done upon request but additional charge is needed.
- ▶ AD+B type is available, please inform us when making an order.
- ▶ Use standard ER collets.

Standard Accessory: • NUT

Collet	Nut	Pull Stud	Preset Screw	Spanner
P.W-7~10	P.W-47	P.W-62	P.W-88	P.W-68~73

CAT / ER COLLET CHUCK

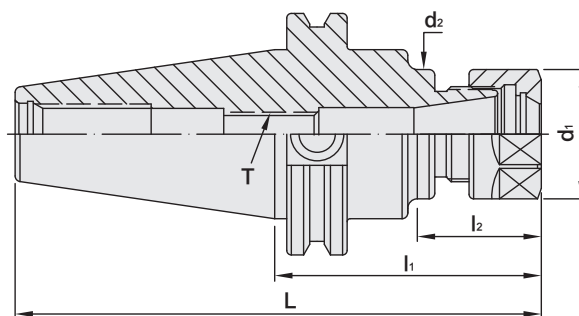


CAT / ER 立銑刀夾頭

(DIN ISO 15488)



T W PAT NO. M298033
 T W PAT NO. M311791
 J P PAT NO. 3128766
 K R PAT NO. 20-0433603
 C N PAT NO. ZL200620132661.0
 C H PAT NO. 696550
 T R PAT NO. TR 2007 02942 Y
 I T PAT NO. N.0000266731



INCHES

MODEL NO.	TYPE	L	l ₁	l ₂	d ₁	d ₂	T	SIZE RANGE	WEIGHT (KGS)
22224	CAT40 x ER16A - 2"	4.687	2	1.211	1.102	1.1	M10 x 1.5P	0.0156 ~ 0.375	1.00
22225	CAT40 x ER16A - 2.76"	5.442	2.76	1.280	1.102	1.1	M10 x 1.5P	0.0156 ~ 0.375	1.05
22227	CAT40 x ER16A - 4"	6.687	4	2.135	1.102	1.1	M10 x 1.5P	0.0156 ~ 0.375	1.35
22231	CAT40 x ER16A - 6"	8.687	6	4.135	1.102	1.1	M10 x 1.5P	0.0156 ~ 0.375	1.65
22233	CAT40 x ER16A - 8"	10.687	8	6.135	1.102	1.1	M10 x 1.5P	0.0156 ~ 0.375	1.85
22235	CAT40 x ER20A - 2.76"	5.442	2.76	1.280	1.339	1.34	M12 x 1.75P	0.0625 ~ 0.5	1.25
22237	CAT40 x ER20A - 4"	6.687	4	2.367	1.339	1.34	M12 x 1.75P	0.0625 ~ 0.5	1.65
22239	CAT40 x ER20A - 6"	8.687	6	4.334	1.339	1.34	M12 x 1.75P	0.0625 ~ 0.5	1.85
22243	CAT40 x ER25 - 2.76"	5.442	2.76	1.379	1.654	1.75	M16 x 2.0P	0.0625 ~ 0.625	1.35
22245	CAT40 x ER25 - 4"	6.687	4	2.573	1.654	1.65	M16 x 2.0P	0.0625 ~ 0.625	1.70
22247	CAT40 x ER25 - 6"	8.687	6	4.622	1.654	1.65	M16 x 2.0P	0.0625 ~ 0.625	2.25
22251	CAT40 x ER25 - 8"	10.687	8	6.622	1.654	1.65	M16 x 2.0P	0.0625 ~ 0.625	2.55
22253	CAT40 x ER32 - 2.76"	5.442	2.76	1.379	1.969	1.75	M16 x 2.0P	0.125 ~ 0.75	1.16
22254	CAT40 x ER32 - 3"	5.687	3	1.622	1.969	1.75	M16 x 2.0P	0.125 ~ 0.75	1.50
22255	CAT40 x ER32 - 4"	6.687	4	2.622	1.969	1.75	M16 x 2.0P	0.125 ~ 0.75	1.75
22257	CAT40 x ER32 - 6"	8.687	6	4.622	1.969	1.75	M16 x 2.0P	0.125 ~ 0.75	2.15
22259	CAT40 x ER32 - 8"	10.687	8	6.622	1.969	1.75	M16 x 2.0P	0.125 ~ 0.75	2.70
22261	CAT40 x ER40 - 3.15"	5.837	3.15	1.772	2.48	1.75	M20 x 2.0P	0.125 ~ 1	1.25
22263	CAT40 x ER40 - 4"	6.687	4	2.543	2.48	2.36	M20 x 2.0P	0.125 ~ 1	1.80
22265	CAT40 x ER40 - 6"	8.687	6	4.543	2.48	2.36	M20 x 2.0P	0.125 ~ 1	2.90
22269	CAT40 x ER50 - 4"	6.687	4	2.543	3.07	2.523	M24 x 2.0P	0.25 ~ 1.25	2.65

Product information:

- ▶ The pre-balance reaches G6.3 10,000 rpm. Higher balancing grade and revolution can be done upon request but additional charge is needed.
- ▶ AD+B type is available, please inform us when making an order.

Standard Accessory: • NUT

Collet	Nut	Pull Stud	Preset Screw	Spanner
P.W-7~28	P.W-48	P.W-62	P.W-88	P.W-68~71



CAT / ER COLLET CHUCK

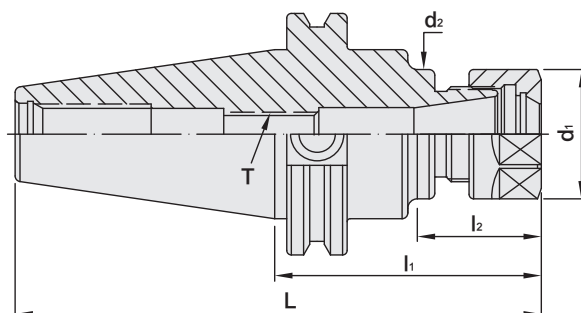


CAT / ER 立銑刀夾頭

(DIN ISO 15488)



T W PAT NO. M298033
 T W PAT NO. M311791
 J P PAT NO. 3128766
 K R PAT NO. 20-0433603
 C N PAT NO. ZL200620132661.0
 C H PAT NO. 696550
 T R PAT NO. TR 2007 02942 Y
 I T PAT NO. N.0000266731



INCHES

MODEL NO.	TYPE	L	l ₁	l ₂	d ₁	d ₂	T	SIZE RANGE	WEIGHT (KGS)
22280	CAT50 x ER16A - 3"	7	3	1.425	1.102	1.1	M10 x 1.5P	0.0156 ~ 0.375	4.05
22281	CAT50 x ER16A - 4"	8	4	2.065	1.102	1.1	M10 x 1.5P	0.0156 ~ 0.375	4.20
22283	CAT50 x ER16A - 5"	9	5	3.065	1.102	1.1	M10 x 1.5P	0.0156 ~ 0.375	4.30
22285	CAT50 x ER16A - 6"	10	6	4.289	1.102	1.1	M10 x 1.5P	0.0156 ~ 0.375	4.40
22287	CAT50 x ER16A - 8"	12	8	6.147	1.102	1.1	M10 x 1.5P	0.0156 ~ 0.375	4.50
22291	CAT50 x ER20A - 4"	8	4	2.065	1.339	1.34	M12 x 1.75P	0.0625 ~ 0.5	4.20
22293	CAT50 x ER20A - 6"	10	6	4.146	1.339	1.34	M12 x 1.75P	0.0625 ~ 0.5	4.45
22295	CAT50 x ER20A - 8"	12	8	6.065	1.339	1.34	M12 x 1.75P	0.0625 ~ 0.5	4.60
22303	CAT50 x ER25 - 4"	8	4	2.453	1.654	1.65	M16 x 2.0P	0.0625 ~ 0.625	4.15
22305	CAT50 x ER25 - 6"	10	6	3.913	1.654	1.65	M16 x 2.0P	0.0625 ~ 0.625	4.50
22307	CAT50 x ER25 - 8"	12	8	5.91	1.654	1.65	M16 x 2.0P	0.0625 ~ 0.625	4.70
22311	CAT50 x ER32 - 4"	8	4	2.149	1.969	1.97	M16 x 2.0P	0.125 ~ 0.75	4.35
22313	CAT50 x ER32 - 6"	10	6	4.152	1.969	1.97	M16 x 2.0P	0.125 ~ 0.75	4.60
22317	CAT50 x ER32 - 8"	12	8	6.068	1.969	1.97	M16 x 2.0P	0.125 ~ 0.75	4.90
22321	CAT50 x ER40 - 4"	8	4	2.347	2.48	2.36	M20 x 2.0P	0.125 ~ 1	5.26
22325	CAT50 x ER40 - 6"	10	6	4.431	2.48	2.36	M20 x 2.0P	0.125 ~ 1	6.36
22327	CAT50 x ER40 - 8"	12	8	6.428	2.48	2.36	M20 x 2.0P	0.125 ~ 1	5.10
22331	CAT50 x ER50 - 4"	8	4	2.622	3.07	2.75	M24 x 2.0P	0.25 ~ 1.25	4.85
22335	CAT50 x ER50 - 6"	10	6	4.622	3.07	2.75	M24 x 2.0P	0.25 ~ 1.25	5.55

Product information:

- ▶ The pre-balance reaches G6.3 10,000 rpm. Higher balancing grade and revolution can be done upon request but additional charge is needed.
- ▶ AD+B type is available, please inform us when making an order.

Standard Accessory: • NUT

Collet	Nut	Pull Stud	Preset Screw	Spanner
P.W-7~28	P.W-48	P.W-62	P.W-88	P.W-68~71

CAT / ER COLLET CHUCK

M TYPE

CAT

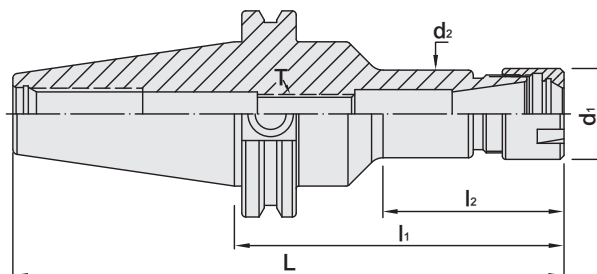


M 型 CAT / ER 立銑刀夾頭

(DIN ISO 15488)



T W PAT NO. M298033
 T W PAT NO. M311791
 J P PAT NO. 3128766
 K R PAT NO. 20-0433603
 C N PAT NO. ZL200620132661.0
 C H PAT NO. 696550
 T R PAT NO. TR 2007 02942 Y
 I T PAT NO. N.0000266731



INCHES

MODEL NO.	TYPE	L	l ₁	l ₂	d ₁	d ₂	T	SIZE RANGE	WEIGHT (KGS)
22352	CAT40 x ER11M - 2.75"	5.437	2.75	1.175	0.63	0.59	M6 x 1.0P	0.062 ~ 0.281	1.10
22354	CAT40 x ER11M - 4"	6.687	4	2.228	0.63	0.59	M6 x 1.0P	0.062 ~ 0.281	1.20
22356	CAT40 x ER16M - 2.76"	5.447	2.76	1.323	0.87	0.83	M10 x 1.5P	0.0156 ~ 0.375	1.20
22358	CAT40 x ER16M - 4"	6.687	4	2.425	0.87	0.83	M10 x 1.5P	0.0156 ~ 0.375	1.30
22360	CAT40 x ER20M - 2.76"	5.447	2.76	1.323	1.102	1.06	M12 x 1.75P	0.0625 ~ 0.5	1.20
22362	CAT40 x ER20M - 4"	6.687	4	2.196	1.102	1.06	M12 x 1.75P	0.0625 ~ 0.5	1.50
22364	CAT50 x ER16M - 4"	8	4	1.927	0.87	0.83	M10 x 1.5P	0.0156 ~ 0.375	3.90
22366	CAT50 x ER16M - 6"	10	6	4.008	0.87	0.83	M10 x 1.5P	0.0156 ~ 0.375	4.00
22368	CAT50 x ER20M - 4"	8	4	2.127	1.102	1.06	M12 x 1.75P	0.0625 ~ 0.5	4.20
22370	CAT50 x ER20M - 6"	10	6	4.127	1.102	1.06	M12 x 1.75P	0.0625 ~ 0.5	5.20

Product information:

- ▶ The pre-balance reaches G6.3 10,000 rpm. Higher balancing grade and revolution can be done upon request but additional charge is needed.
- ▶ AD+B type is available, please inform us when making an order.

Standard Accessory: • NUT

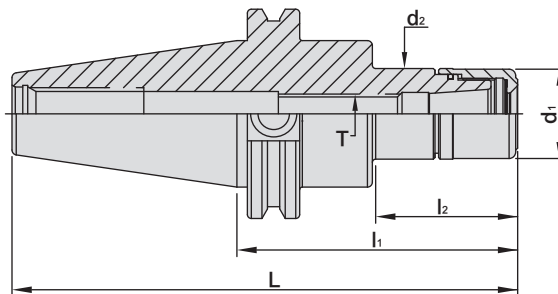
Collet	Nut	Pull Stud	Preset Screw	Spanner
P.W-7~28	P.W-49	P.W-62	P.W-88	P.W-68~71



CAT / SK3 COLLET CHUCK

5 μ m

CAT / SK3 高速機專用夾頭



INCHES

MODEL NO.	TYPE	L	l ₁	l ₂	d ₁	d ₂	T	SIZE RANGE	WEIGHT (KGS)
31.763.06.350	CAT40 x SK306 - 3.5"	6.187	3.5	1.438	0.768	0.768	M8 x 1.25P	0.0625 ~ 0.1875	1.05
31.763.06.400	CAT40 x SK306 - 4"	6.687	4	1.938	0.768	0.768	M8 x 1.25P	0.0625 ~ 0.1875	1.65
31.763.10.350	CAT40 x SK310 - 3.5"	6.187	3.5	1.627	1.083	1.083	M12 x 1.75P	0.125 ~ 0.375	1.05
31.763.10.400	CAT40 x SK310 - 4"	6.687	4	2.127	1.083	1.083	M12 x 1.75P	0.125 ~ 0.375	1.65
31.763.13.350	CAT40 x SK313 - 3.5"	6.187	3.5	2.004	1.299	1.299	M12 x 1.75P	0.125 ~ 0.5	1.05
31.763.13.400	CAT40 x SK313 - 4"	6.687	4	2.504	1.299	1.299	M12 x 1.75P	0.125 ~ 0.5	1.65
31.763.16.350	CAT40 x SK316 - 3.5"	6.187	3.5	2.034	1.575	1.575	M18 x 1.5P	0.125 ~ 0.625	1.35
31.763.16.400	CAT40 x SK316 - 4"	6.687	4	2.534	1.575	1.575	M18 x 1.5P	0.125 ~ 0.625	2.10
32.763.06.350	CAT50 x SK306 - 3.5"	7.5	3.5	1.728	0.768	0.768	M8 x 1.25P	0.0625 ~ 0.1875	3.60
32.763.06.400	CAT50 x SK306 - 4"	8	4	2.228	0.768	0.768	M8 x 1.25P	0.0625 ~ 0.1875	4.00
32.763.10.400	CAT50 x SK310 - 4"	8	4	2.562	1.083	1.083	M12 x 1.75P	0.125 ~ 0.375	3.80
32.763.10.450	CAT50 x SK310 - 4.5"	8.5	4.5	2.115	1.083	1.083	M12 x 1.75P	0.125 ~ 0.375	4.00
32.763.13.400	CAT50 x SK313 - 4"	8	4	2.425	1.299	1.299	M12 x 1.75P	0.125 ~ 0.5	3.80
32.763.13.450	CAT50 x SK313 - 4.5"	8.5	4.5	2.925	1.299	1.299	M12 x 1.75P	0.125 ~ 0.5	4.00
32.763.16.400	CAT50 x SK316 - 4"	8	4	1.871	1.575	1.575	M18 x 1.5P	0.125 ~ 0.625	4.00
32.763.16.450	CAT50 x SK316 - 4.5"	8.5	4.5	2.371	1.575	1.575	M18 x 1.5P	0.125 ~ 0.625	4.15

Product information:

- ▶ Balance: G2.5 25,000 rpm. Higher balancing grade and revolution can be done upon request but additional charge is needed.
- ▶ AD+B type is available, please inform us when making an order.

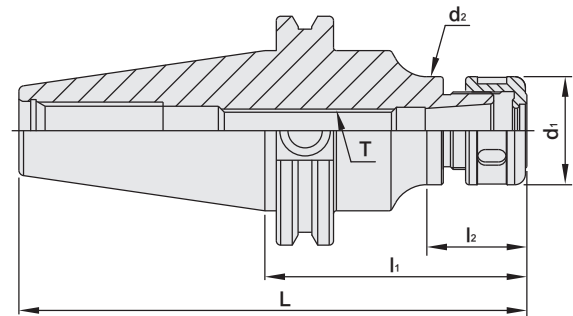
Standard Accessory: • NUT

Collet	Nut	Pull Stud	Preset Screw	Spanner
				
P.W-29~32	P.W-52	P.W-62	P.W-88	P.W-68~73

CAT / SKS COLLET CHUCK

5 μ m

CAT / SKS 高速機專用夾頭



T W PAT NO. M270871

INCHES

MODEL NO.	TYPE	L	l ₁	l ₂	d ₁	d ₂	T	SIZE RANGE	WEIGHT (KGS)
23712	CAT40 x SKS6 - 3.5"	6.187	3.5	1.594	0.708	0.708	M8 x 1.25P	0.0625 ~ 0.1875	1.05
23714	CAT40 x SKS6 - 4"	6.687	4	2.094	0.708	0.708	M8 x 1.25P	0.0625 ~ 0.1875	1.65
23716	CAT40 x SKS10 - 3.5"	6.187	3.5	1.703	1.181	1.086	M12 x 1.75P	0.125 ~ 0.375	1.05
23718	CAT40 x SKS10 - 4"	6.687	4	2.203	1.181	1.086	M12 x 1.75P	0.125 ~ 0.375	1.65
23720	CAT40 x SKS13 - 3.5"	6.187	3.5	2.004	1.299	1.299	M12 x 1.75P	0.125 ~ 0.5	1.05
23720 - 4	CAT40 x SKS13 - 4"	6.687	4	2.504	1.299	1.299	M12 x 1.75P	0.125 ~ 0.5	1.65
23722	CAT40 x SKS16 - 3.5"	6.187	3.5	2.034	1.575	1.575	M18 x 1.5P	0.125 ~ 0.625	1.35
23724	CAT40 x SKS16 - 4"	6.687	4	2.534	1.575	1.575	M18 x 1.5P	0.125 ~ 0.625	2.10
23726	CAT40 x SKS20 - 3.5"	6.187	3.5	2.042	1.909	1.909	M22 x 1.5P	0.125 ~ 0.75	1.35
23726 - 4	CAT40 x SKS20 - 4"	6.687	4	2.542	1.909	1.909	M22 x 1.5P	0.125 ~ 0.75	2.10
23732	CAT40 x SKS25 - 3.5"	6.187	3.5	2.122	2.165	2.165	M28 x 2.0P	0.125 ~ 1	1.35
23734	CAT40 x SKS25 - 4"	6.687	4	2.622	2.165	2.165	M28 x 2.0P	0.125 ~ 1	2.20
23742	CAT50 x SKS6 - 3.5"	7.5	3.5	1.728	0.708	0.708	M8 x 1.25P	0.0625 ~ 0.1875	3.60
23744	CAT50 x SKS6 - 4"	8	4	2.228	0.708	0.708	M8 x 1.25P	0.0625 ~ 0.1875	4.00
23746	CAT50 x SKS10 - 4"	8	4	2.228	1.181	1.181	M12 x 1.75P	0.125 ~ 0.375	3.80
23748	CAT50 x SKS10 - 4.5"	8.5	4.5	2.408	1.181	1.181	M12 x 1.75P	0.125 ~ 0.375	4.00
23750	CAT50 x SKS13 - 4"	8	4	2.425	1.299	1.299	M12 x 1.75P	0.125 ~ 0.5	3.80
23750 - 4.5	CAT50 x SKS13 - 4.5"	8.5	4.5	2.925	1.299	1.299	M12 x 1.75P	0.125 ~ 0.5	4.00
23752	CAT50 x SKS16 - 4"	8	4	2.056	1.575	1.575	M18 x 1.5P	0.125 ~ 0.625	4.00
23754	CAT50 x SKS16 - 4.5"	8.5	4.5	2.556	1.575	1.575	M18 x 1.5P	0.125 ~ 0.625	4.15
23756	CAT50 x SKS20 - 4"	8	4	2.504	1.909	1.909	M22 x 1.5P	0.125 ~ 0.75	4.00
23756 - 4.5	CAT50 x SKS20 - 4.5"	8.5	4.5	3.004	1.909	1.909	M22 x 1.5P	0.125 ~ 0.75	4.15
23762	CAT50 x SKS25 - 4"	8	4	2.167	2.165	2.165	M28 x 2.0P	0.125 ~ 1	4.20
23764	CAT50 x SKS25 - 4.5"	8.5	4.5	2.667	2.165	2.165	M28 x 2.0P	0.125 ~ 1	4.40

Product information:

- ▶ Balance: G2.5 25,000 rpm. Higher balancing grade and revolution can be done upon request but additional charge is needed.
- ▶ AD+B type is available, please inform us when making an order.

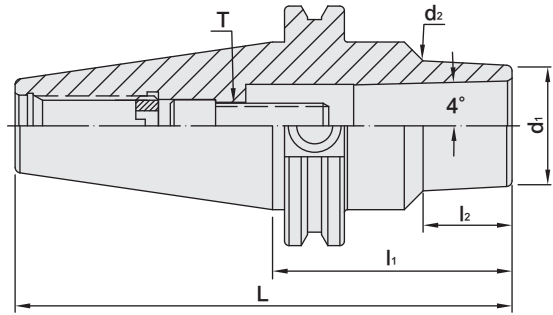
Standard Accessory: • NUT

Collet	Nut	Pull Stud	Preset Screw	Spanner
P.W-29~32	P.W-53~54	P.W-62	P.W-88	P.W-68~73



CAT / SBL SLIM-FIT COLLET CHUCK

CAT / SBL 後拉式立銑刀夾頭







T.W. PAT. NO. M274178

INCHES

MODEL NO.	TYPE	L	l ₁	l ₂	d ₁	d ₂	T	RECOMMENDED TORQUE		SIZE RANGE	WEIGHT (KGS)
								N.m	lbf-ft		
23654	CAT40 x SBL6 - 3"	5.687	3	1.09	0.55	0.64	M6 x 1.0P	12	9	0.125 ~ 0.25	1.00
23656	CAT40 x SBL6 - 4"	6.687	4	2.11	0.55	0.73	M6 x 1.0P	12	9	0.125 ~ 0.25	1.25
23658	CAT40 x SBL6 - 6"	8.687	6	4.17	0.55	0.91	M6 x 1.0P	12	9	0.125 ~ 0.25	1.20
23659 - 4	CAT40 x SBL8 - 4"	6.687	4	2.43	0.787	1.03	M8 x 1.25P	29	21	0.125 ~ 0.3125	1.13
23659 - 5	CAT40 x SBL8 - 5"	7.687	5	3.43	0.787	1.14	M8 x 1.25P	29	21	0.125 ~ 0.3125	1.24
23659 - 6	CAT40 x SBL8 - 6"	8.687	6	4.43	0.787	1.25	M8 x 1.25P	29	21	0.125 ~ 0.3125	1.39
23660	CAT40 x SBL12 - 2.5"	5.187	2.5	0.82	1.02	1.15	M10 x 1.5P	45	33	0.125 ~ 0.5	1.45
23662	CAT40 x SBL12 - 4"	6.687	4	2.23	1.02	1.25	M10 x 1.5P	45	33	0.125 ~ 0.5	1.20
23664	CAT40 x SBL12 - 6"	8.687	6	4.49	1.02	1.49	M10 x 1.5P	45	33	0.125 ~ 0.5	1.45
23666	CAT40 x SBL20 - 2.5"	5.187	2.5	0.97	1.38	1.46	M12 x 1.75P	60	44	0.125 ~ 0.75	1.20
23668	CAT40 x SBL20 - 4"	6.687	4	2.54	1.37	1.6	M12 x 1.75P	60	44	0.125 ~ 0.75	1.60
23670	CAT40 x SBL20 - 6"	8.687	6	4.26	1.37	-	M12 x 1.75P	60	44	0.125 ~ 0.75	1.50
23671	CAT40 x SBL25 - 3.25"	5.937	3.25	1.86	1.57	1.73	M16 x 2.0P	90	66	0.125 ~ 1	1.40
23671 - 4	CAT40 x SBL25 - 4"	6.687	4	2.61	1.57	1.75	M16 x 2.0P	90	66	0.125 ~ 1	1.60
23672	CAT50 x SBL6 - 3.5"	7.5	3.5	1.56	0.55	0.71	M6 x 1.0P	12	9	0.125 ~ 0.25	1.70
23674	CAT50 x SBL6 - 4.5"	8.5	4.5	2.37	0.55	0.8	M6 x 1.0P	12	9	0.125 ~ 0.25	1.50
23676	CAT50 x SBL6 - 6"	10	6	3.96	0.55	0.96	M6 x 1.0P	12	9	0.125 ~ 0.25	1.70
23677 - 4	CAT50 x SBL8 - 4"	8	4	2.24	0.787	1.01	M8 x 1.25P	29	21	0.125 ~ 0.3125	3.23
23677 - 5	CAT50 x SBL8 - 5"	9	5	3.25	0.787	1.12	M8 x 1.25P	29	21	0.125 ~ 0.3125	3.36
23677 - 6	CAT50 x SBL8 - 6"	10	6	4.24	0.787	1.23	M8 x 1.25P	29	21	0.125 ~ 0.3125	3.51
23678	CAT50 x SBL12 - 2.5"	6.5	2.5	0.93	1.02	1.11	M10 x 1.5P	45	33	0.125 ~ 0.5	4.00
23680	CAT50 x SBL12 - 4.5"	8.5	4.5	2.74	1.02	1.26	M10 x 1.5P	45	33	0.125 ~ 0.5	4.10
23682	CAT50 x SBL12 - 6"	10	6	4.24	1.02	1.39	M10 x 1.5P	45	33	0.125 ~ 0.5	4.20
23684	CAT50 x SBL20 - 2.5"	6.5	2.5	0.74	1.37	1.44	M12 x 1.75P	60	44	0.125 ~ 0.75	4.30
23686	CAT50 x SBL20 - 4.5"	8.5	4.5	2.74	1.37	1.61	M12 x 1.75P	60	44	0.125 ~ 0.75	4.60
23688	CAT50 x SBL20 - 6"	10	6	4.11	1.37	1.73	M12 x 1.75P	60	44	0.125 ~ 0.75	4.70
23690	CAT50 x SBL25 - 2.75"	6.75	2.75	1.33	1.57	1.69	M16 x 2.0P	90	66	0.125 ~ 1	4.40
23692	CAT50 x SBL25 - 4.5"	8.5	4.5	3.06	1.57	1.84	M16 x 2.0P	90	66	0.125 ~ 1	4.60

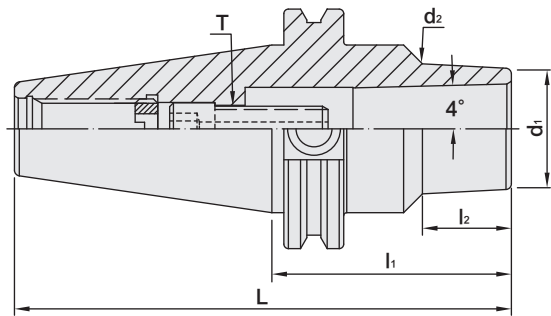
Product information:

- ▶ Balance: G2.5 25,000 rpm. Higher balancing grade and revolution can be done upon request but additional charge is needed.
- ▶ AD+B type is available, please inform us when making an order.

Collet	Pull Stud	Screw	Spanner
			
P.W-33	P.W-62	P.W-91	P.W-72

CAT / SBLC SLIM-FIT COLLET CHUCK

CAT / SBLC 後拉式立銑刀夾頭



T.W. PAT. NO. M274178

INCHES

MODEL NO.	TYPE	L	l ₁	l ₂	d ₁	d ₂	T	RECOMMENDED TORQUE		SIZE RANGE	WEIGHT (KGS)
								N.m	lbf-ft		
23654C	CAT40 x SBLC6 - 3"	5.687	3	1.09	0.55	0.64	M6 x 1.0P	12	9	0.125 ~ 0.25	1.00
23656C	CAT40 x SBLC6 - 4"	6.687	4	2.11	0.55	0.73	M6 x 1.0P	12	9	0.125 ~ 0.25	1.25
23658C	CAT40 x SBLC6 - 6"	8.687	6	4.17	0.55	0.91	M6 x 1.0P	12	9	0.125 ~ 0.25	1.20
23659C - 4	CAT40 x SBLC8 - 4"	6.687	4	2.43	0.787	1.03	M8 x 1.25P	29	21	0.125 ~ 0.3125	1.13
23659C - 5	CAT40 x SBLC8 - 5"	7.687	5	3.43	0.787	1.14	M8 x 1.25P	29	21	0.125 ~ 0.3125	1.24
23659C - 6	CAT40 x SBLC8 - 6"	8.687	6	4.43	0.787	1.25	M8 x 1.25P	29	21	0.125 ~ 0.3125	1.39
23660C	CAT40 x SBLC12 - 2.5"	5.187	2.5	0.82	1.02	1.15	M10 x 1.5P	45	33	0.125 ~ 0.5	1.45
23662C	CAT40 x SBLC12 - 4"	6.687	4	2.23	1.02	1.25	M10 x 1.5P	45	33	0.125 ~ 0.5	1.20
23664C	CAT40 x SBLC12 - 6"	8.687	6	4.49	1.02	1.49	M10 x 1.5P	45	33	0.125 ~ 0.5	1.45
23666C	CAT40 x SBLC20 - 2.5"	5.187	2.5	0.97	1.38	1.46	M12 x 1.75P	60	44	0.125 ~ 0.75	1.20
23668C	CAT40 x SBLC20 - 4"	6.687	4	2.54	1.37	1.6	M12 x 1.75P	60	44	0.125 ~ 0.75	1.60
23670C	CAT40 x SBLC20 - 6"	8.687	6	4.26	1.37	-	M12 x 1.75P	60	44	0.125 ~ 0.75	1.50
23671C	CAT40 x SBLC25 - 3.25"	5.937	3.25	1.86	1.57	1.73	M16 x 2.0P	90	66	0.125 ~ 1	1.40
23671C - 4	CAT40 x SBLC25 - 4"	6.687	4	2.61	1.57	1.75	M16 x 2.0P	90	66	0.125 ~ 1	1.60
23672C	CAT50 x SBLC6 - 3.5"	7.5	3.5	1.56	0.55	0.71	M6 x 1.0P	12	9	0.125 ~ 0.25	1.70
23674C	CAT50 x SBLC6 - 4.5"	8.5	4.5	2.37	0.55	0.8	M6 x 1.0P	12	9	0.125 ~ 0.25	1.50
23676C	CAT50 x SBLC6 - 6"	10	6	3.96	0.55	0.96	M6 x 1.0P	12	9	0.125 ~ 0.25	1.70
23677C - 4	CAT50 x SBLC8 - 4"	8	4	2.24	0.787	1.01	M8 x 1.25P	29	21	0.125 ~ 0.3125	3.23
23677C - 5	CAT50 x SBLC8 - 5"	9	5	3.25	0.787	1.12	M8 x 1.25P	29	21	0.125 ~ 0.3125	3.36
23677C - 6	CAT50 x SBLC8 - 6"	10	6	4.24	0.787	1.23	M8 x 1.25P	29	21	0.125 ~ 0.3125	3.51
23678C	CAT50 x SBLC12 - 2.5"	6.5	2.5	0.93	1.02	1.11	M10 x 1.5P	45	33	0.125 ~ 0.5	4.00
23680C	CAT50 x SBLC12 - 4.5"	8.5	4.5	2.74	1.02	1.26	M10 x 1.5P	45	33	0.125 ~ 0.5	4.10
23682C	CAT50 x SBLC12 - 6"	10	6	4.24	1.02	1.39	M10 x 1.5P	45	33	0.125 ~ 0.5	4.20
23684C	CAT50 x SBLC20 - 2.5"	6.5	2.5	0.74	1.37	1.44	M12 x 1.75P	60	44	0.125 ~ 0.75	4.30
23686C	CAT50 x SBLC20 - 4.5"	8.5	4.5	2.74	1.37	1.61	M12 x 1.75P	60	44	0.125 ~ 0.75	4.60
23688C	CAT50 x SBLC20 - 6"	10	6	4.11	1.37	1.73	M12 x 1.75P	60	44	0.125 ~ 0.75	4.70
23690C	CAT50 x SBLC25 - 2.75"	6.75	2.75	1.33	1.57	1.69	M16 x 2.0P	90	66	0.125 ~ 1	4.40
23692C	CAT50 x SBLC25 - 4.5"	8.5	4.5	3.06	1.57	1.84	M16 x 2.0P	90	66	0.125 ~ 1	4.60

Product information:

- ▶ Balance: G2.5 25,000 rpm. Higher balancing grade and revolution can be done upon request but additional charge is needed.
- ▶ AD+B type is available, please inform us when making an order.
- ▶ Used with SLC sealed collet and coolant through cutters.

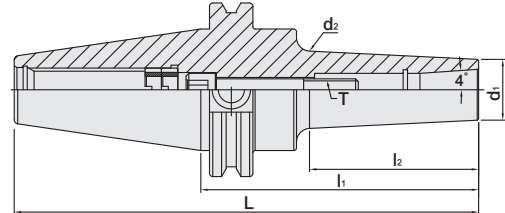
Standard Accessory: • SPANNER

Collet	Pull Stud	Screw	Spanner
P.W-34	P.W-62	P.W-91	P.W-72



CAT / EBL SLIM-FIT COLLET CHUCK

CAT / EBL 後拉式刀桿



INCHES

MODEL NO.	TYPE	L	l ₁	l ₂	d ₁	d ₂	T	TORQUE		SIZE RANGE	WEIGHT (KGS)
								N.m	lbf-ft		
26922	CAT40 x EBL6 - 3"	5.687	3	1.43	0.75	0.89	M6 x 1.0P	12	9	0.125 ~ 0.25	1.10
26922 - 4	CAT40 x EBL6 - 4"	6.687	4	2.43	0.75	0.98	M6 x 1.0P	12	9	0.125 ~ 0.25	1.19
26922 - 6	CAT40 x EBL6 - 6"	8.687	6	4.43	0.75	1.18	M6 x 1.0P	12	9	0.125 ~ 0.25	1.42
26924 - 3	CAT40 x EBL8 - 3"	5.687	3	1.43	0.875	1.01	M8 x 1.25P	29	21	0.125 ~ 0.375	1.08
26924 - 4	CAT40 x EBL8 - 4"	6.687	4	2.43	0.875	1.11	M8 x 1.25P	29	21	0.125 ~ 0.375	1.23
26924 - 6	CAT40 x EBL8 - 6"	8.687	6	4.50	0.875	1.31	M8 x 1.25P	29	21	0.125 ~ 0.375	1.46
26932	CAT50 x EBL6 - 3"	7	3	1.24	0.75	0.87	M6 x 1.0P	12	9	0.125 ~ 0.25	3.19
26932 - 4	CAT50 x EBL6 - 4"	8	4	2.24	0.75	0.9	M6 x 1.0P	12	9	0.125 ~ 0.25	3.21
26932 - 6	CAT50 x EBL6 - 6"	10	6	4.24	0.75	1.16	M6 x 1.0P	12	9	0.125 ~ 0.25	3.49
26934 - 3	CAT50 x EBL8 - 3"	7	3	1.24	0.875	0.96	M8 x 1.25P	29	21	0.125 ~ 0.375	3.16
26934 - 4	CAT50 x EBL8 - 4"	8	4	2.24	0.875	1.092	M8 x 1.25P	29	21	0.125 ~ 0.375	3.23
26934 - 6	CAT50 x EBL8 - 6"	10	6	4.24	0.875	1.29	M8 x 1.25P	29	21	0.125 ~ 0.375	3.49



▶ SBL



▶ EBL





Features:

- ▶ The extended length of EBL collet and special longer inner hole design of holder allow deeper tool insertion and shorter tool overhanging length, improving the machining stability.
- ▶ The optimized design of thicker neck improves the machining rigidity and eliminates micro-vibration.
- ▶ Use with CTS to achieve better dustproof ability and chip evacuation. Capable of coolant pressure up to 25 bar.

Product information:

- ▶ Balance: G2.5 25,000rpm.

Standard Accessory: • ALLEN WRENCH • TORX WRENCH

Collet	Sealed Collet	Pull Stud	Spanner
			
P.W-35	P.W-36	P.W-62	P.72

CAT / MLD MULTI - LOCK MILLING CHUCK

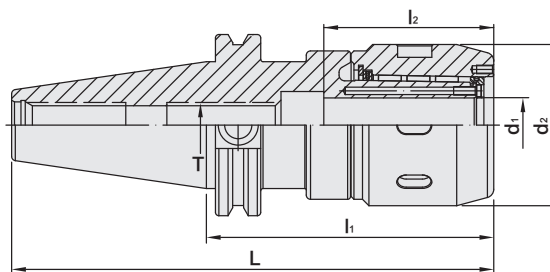
CAT / MLD 直式筒夾 銑床夾頭



台灣精品 2007
TAIWAN EXCELLENCE



T W PAT NO. M447277
T W PAT NO. M430337
T W PAT NO. M451185
C N PAT NO. ZL201220749784.4
C H PAT NO. ZL201220749942.6



INCHES

MODEL NO.	TYPE	L	l ₁	l ₂	d ₁	d ₂	T	WEIGHT (KGS)
23200G	CAT40 x MLD1/2" - 3.35"	6.03	3.35	1.84	0.5	1.654	M12 x 1.75P	1.80
23201G	CAT40 x MLD5/8" - 3.5"	6.187	3.5	2.23	0.625	1.889	M12 x 1.75P	1.90
23202G	CAT40 x MLD3/4" - 4"	6.687	4	2.34	0.75	2.224	5/8" - 11	1.90
23203G	CAT40 x MLD3/4" - 6"	8.687	6	2.34	0.75	2.224	5/8" - 11	2.10
23204G	CAT40 x MLD1" - 4"	6.687	4	2.49	1	2.362	5/8" - 11	2.00
23210G	CAT40 x MLD1-1/4" - 4.2"	6.687	4.2	2.8	1.25	2.795	5/8" - 11	2.50
23212G	CAT40 x MLD1-1/4" - 6"	8.687	6	2.8	1.25	2.795	5/8" - 11	2.70
23213G	CAT50 x MLD1/2" - 3.5"	7.5	3.5	1.84	0.5	1.654	M12 x 1.75P	2.50
23219G	CAT50 x MLD5/8" - 3.5"	7.5	3.5	2.23	0.625	1.889	M12 x 1.75P	2.70
23214G	CAT50 x MLD3/4" - 4"	8	4	2.34	0.75	2.224	5/8" - 11	2.50
23216G	CAT50 x MLD3/4" - 6"	10	6	2.34	0.75	2.224	5/8" - 11	2.80
23218G	CAT50 x MLD1" - 4"	8	4	2.49	1	2.362	5/8" - 11	2.90
23222G	CAT50 x MLD1-1/4" - 4.13"	8.13	4.13	2.8	1.25	2.795	1" - 8	2.70
23224G	CAT50 x MLD1-1/4" - 6"	10	6	2.8	1.25	2.795	5/8" - 11	3.00

Features:

- ▶ Good clamping power. The clamping power of MLD32 type is around 1000 N-m.
- ▶ Runout accuracy of MLD holder body: within 0.005mm.
- ▶ Runout accuracy with collet: within 0.02mm.
- ▶ The tolerance of the cutting tool shank must be less than h6.
- ▶ Internal bearing cage helps increase the clamping force.
- ▶ After fastening, the nuts and tool holders contact tight to enhance the cutting rigidity.
- ▶ Coolant options: through the center of holder or cutter. Use sealed caps and SR rings for coolant through cutter.

Product information:

- ▶ The pre-balance reaches G6.3 8,000 rpm. Higher balancing grade and revolution can be done upon request but additional charge is needed.
- ▶ AD+B type is available, please inform us when making an order.

Standard Accessory: • NUT • SET SCREW

Collet	Sealed Cap	SR Sealed Ring	Pull Stud	Set Screw	Spanner	Spanner
P.W-38~39	P.W-58	P.W-59	P.W-62	P.W-88	P.W-71~72	P.W-73



CAT / EOC COLLET CHUCK

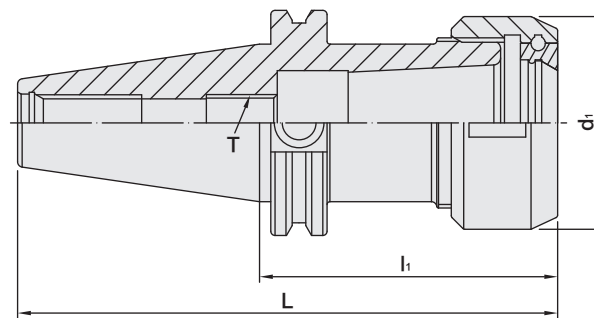


CAT / EOC 立銑刀夾頭

(DIN ISO 10897)



T W PAT NO. M298033
 T W PAT NO. M311791
 J P PAT NO. 3128766
 K R PAT NO. 20-0433603
 C N PAT NO. ZL200620132661.0
 C H PAT NO. 696550
 T R PAT NO. TR 2007 02942 Y
 I T PAT NO. N.0000266731



INCHES

MODEL NO.	TYPE	L	l ₁	d ₁	T	SIZE RANGE	WEIGHT (KGS)
22011	CAT40 x EOC25 - 3.15"	5.837	3.15	2.362	M16 x 2.0P	0.125 ~ 1	1.55
22013	CAT40 x EOC25 - 4"	6.687	4	2.362	M16 x 2.0P	0.125 ~ 1	2.55
22015	CAT40 x EOC32 - 3.15"	5.837	3.15	2.835	M16 x 2.0P	0.1875 ~ 1.25	1.95
22017	CAT40 x EOC32 - 4"	6.687	4	2.835	M16 x 2.0P	0.1875 ~ 1.25	2.35
22021	CAT50 x EOC25 - 3.15"	7.15	3.15	2.362	M16 x 2.0P	0.125 ~ 1	3.25
22023	CAT50 x EOC25 - 4"	8	4	2.362	M16 x 2.0P	0.125 ~ 1	5.30
22025	CAT50 x EOC25 - 6"	10	6	2.362	M16 x 2.0P	0.125 ~ 1	4.40
22027	CAT50 x EOC32 - 3.15"	7.15	3.15	2.835	M24 x 2.0P	0.1875 ~ 1.25	5.70
22029	CAT50 x EOC32 - 4.7"	8.7	4.7	2.835	M24 x 2.0P	0.1875 ~ 1.25	6.10

Product information:

- ▶ The pre-balance reaches G6.3 10,000 rpm. Higher balancing grade and revolution can be done upon request but additional charge is needed.

Standard Accessory: • NUT

Collet	Nut	Pull Stud	Preset Screw	Spanner
P.W-41	P.W-57	P.W-62	P.W-88	P.W-68~72



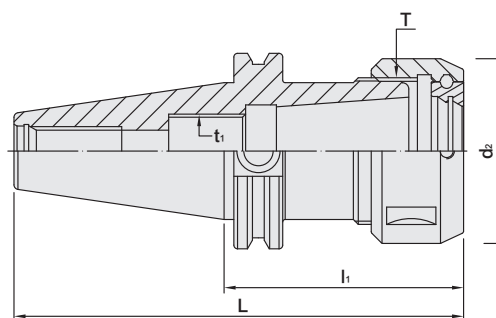
CAT / TG COLLET CHUCK



CAT / TG 立銑刀夾頭



T W PAT NO. M298033
 T W PAT NO. M311791
 J P PAT NO. 3128766
 K R PAT NO. 20-0433603
 C N PAT NO. ZL200620132661.0
 C H PAT NO. 696550
 T R PAT NO. TR 2007 02942 Y
 I T PAT NO. N.0000266731



INCHES

MODEL NO.	TYPE	L	l ₁	d ₂	t ₁	T	SIZE RANGE	WEIGHT (KGS)
23008	CAT40 x TG75 - 2.75"	5.437	2.75	1.968	M16 x 2.0P	TW 1-1/2" - 12	0.094 ~ 0.75	1.20
23010	CAT40 x TG75 - 4"	6.687	4	1.968	M16 x 2.0P	TW 1-1/2" - 12	0.094 ~ 0.75	1.40
23012	CAT40 x TG75 - 5"	7.687	5	1.968	M16 x 2.0P	TW 1-1/2" - 12	0.094 ~ 0.75	1.60
23014	CAT40 x TG100 - 3"	5.687	3	2.362	M24 x 2.0P	TW 1-7/8" - 12	0.094 ~ 1	1.20
23016	CAT40 x TG100 - 4"	6.687	4	2.362	M24 x 2.0P	TW 1-7/8" - 12	0.094 ~ 1	1.40
23018	CAT40 x TG100 - 6"	8.687	6	2.362	M24 x 2.0P	TW 1-7/8" - 12	0.094 ~ 1	2.55
23020	CAT40 x TG150 - 5"	7.687	5	3.228	M24 x 2.0P	TW 2-5/8" - 12	0.156 ~ 1.5	2.90
23022	CAT40 x TG150 - 6"	8.687	6	3.228	M24 x 2.0P	TW 2-5/8" - 12	0.156 ~ 1.5	3.70
23030	CAT50 x TG100 - 3"	7	3	2.362	M24 x 2.0P	TW 1-7/8" - 12	0.094 ~ 1	3.25
23032	CAT50 x TG100 - 4"	8	4	2.362	M24 x 2.0P	TW 1-7/8" - 12	0.094 ~ 1	4.40
23034	CAT50 x TG100 - 6"	10	6	2.362	M24 x 2.0P	TW 1-7/8" - 12	0.094 ~ 1	5.30
23036	CAT50 x TG150 - 5"	9	5	3.228	M24 x 2.0P	TW 2-5/8" - 12	0.156 ~ 1.5	5.70
23038	CAT50 x TG150 - 6"	10	6	3.228	M24 x 2.0P	TW 2-5/8" - 12	0.156 ~ 1.5	6.10
23040	CAT50 x TG150 - 7"	11	7	3.228	M24 x 2.0P	TW 2-5/8" - 12	0.156 ~ 1.5	6.50

Product information:

► The pre-balance reaches G6.3 10,000 rpm. Higher balancing grade and revolution can be done upon request but additional charge is needed.

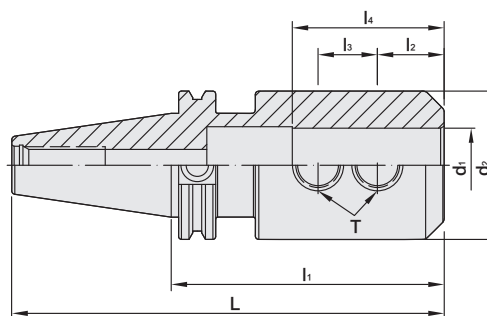
Standard Accessory: • NUT

Collet	Nut	Pull Stud	Preset Screw	Spanner
P.W-42~44	P.W-57	P.W-62	P.W-88	P.W-68~72



CAT / SLN SIDE LOCK END MILL HOLDER

CAT / SLN 側固式立銑刀柄



INCHES

MODEL NO.	TYPE	L	l ₁	l ₂	l ₃	l ₄	d ₁	d ₂	T	WEIGHT (KGS)
22907	CAT40 x SLN1/8" - 2.375"	5.062	2.375	0.37	-	0.787	0.125	0.69	6# - 32	1.15
22909	CAT40 x SLN3/16" - 2.5"	5.187	2.5	0.562	-	0.984	0.1875	0.69	8# - 32	1.20
22911	CAT40 x SLN1/4" - 3"	5.687	3	0.63	-	1.38	0.25	0.78	1/4 - 28	1.15
22913	CAT40 x SLN5/16" - 3"	5.687	3	0.6	-	1.38	0.3125	0.88	5/16 - 24	1.20
22915	CAT40 x SLN3/8" - 3"	5.687	3	0.75	-	1.535	0.375	1	3/8 - 24	1.18
22917	CAT40 x SLN1/2" - 3"	5.687	3	0.875	-	1.732	0.5	1.25	7/16 - 20	1.40
22919	CAT40 x SLN5/8" - 3"	5.687	3	0.937	-	1.85	0.625	1.5	1/2 - 20	1.50
22921 - 3	CAT40 x SLN3/4" - 3"	5.687	3	1	-	1.929	0.75	1.75	5/8 - 18	1.65
22921	CAT40 x SLN3/4" - 3.5"	6.187	3.5	1	-	1.929	0.75	1.75	5/8 - 18	1.70
22923	CAT40 x SLN7/8" - 3.5"	6.187	3.5	1.063	0.875	2.36	0.875	1.88	5/8 - 18	2.55
22925	CAT40 x SLN1" - 4"	6.687	4	1.125	1	2.56	1	2	3/4 - 16	2.80
22927	CAT40 x SLN1-1/4" - 4.6"	7.287	4.6	1.125	1	2.56	1.25	2.5	3/4 - 16	2.90
22929	CAT40 x SLN1-1/2" - 4.5"	7.187	4.5	1.125	1	2.56	1.5	2.5	3/4 - 16	3.20
22931	CAT50 x SLN1/4" - 4"	8	4	0.63	-	1.378	0.25	0.78	1/4 - 28	3.95
22933	CAT50 x SLN5/16" - 4"	8	4	0.6	-	1.378	0.3125	0.88	5/16 - 24	3.95
22935	CAT50 x SLN3/8" - 4"	8	4	0.75	-	1.535	0.375	1	3/8 - 24	4.00
22937	CAT50 x SLN1/2" - 4"	8	4	0.875	-	1.732	0.5	1.25	7/16 - 20	4.15
22939	CAT50 x SLN5/8" - 4"	8	4	0.937	-	1.85	0.625	1.5	1/2 - 20	4.30
22941	CAT50 x SLN3/4" - 4"	8	4	1	-	1.929	0.75	1.75	5/8 - 18	4.35
22943	CAT50 x SLN7/8" - 4"	8	4	1.063	0.875	2.362	0.875	1.88	5/8 - 18	5.30
22945	CAT50 x SLN1" - 4"	8	4	1.125	1	2.56	1	2	3/4 - 16	5.50
22947 - 4	CAT50 x SLN1-1/4" - 4"	8	4	1.125	1	2.756	1.25	2.5	3/4 - 16	5.65
22947	CAT50 x SLN1-1/4" - 4.6"	8.6	4.6	1.125	1	2.756	1.25	2.5	3/4 - 16	5.70
22949	CAT50 x SLN1-1/2" - 4.6"	8.6	4.6	1.125	1	2.756	1.5	2.5	3/4 - 16	5.70
22951	CAT50 x SLN2" - 6"	10	6	1.41	1.5	3.347	2	3.75	1 - 14	5.90

Features:

- ▶ Internal hole tolerance: H5 (DIN-1835-B standard).
- ▶ The tolerance of tool shank diameter is within h6.

Product information:

- ▶ The pre-balance reaches G6.3 8,000 rpm. Higher balancing grade and revolution can be done upon request but additional charge is needed.
- ▶ AD+B type is available, please inform us when making an order.

Pull Stud

Lock Screw

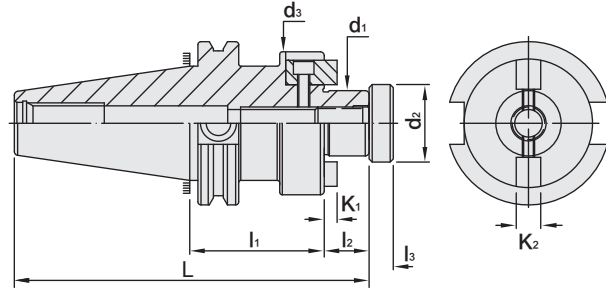


P.W-62

P.W-90

CAT FACE MILL ARBOR

CAT / FMA 平面銑刀柄



INCHES

MODEL NO.	TYPE	L	l ₁	l ₂	d ₁	d ₂	d ₃	K ₁	K ₂	WEIGHT (KGS)
22711	CAT40 x FMA3/4" - 1.37"	4.744	1.37	0.687	0.75	0.875	1.69	0.188	0.3125	1.50
22711 - 4	CAT40 x FMA3/4" - 4"	7.374	4	0.687	0.75	0.875	1.69	0.188	0.3125	1.70
22711 - 6	CAT40 x FMA3/4" - 6"	9.374	6	0.687	0.75	0.875	1.69	0.188	0.3125	1.90
22713	CAT40 x FMA1" - 2.06"	5.434	2.06	0.687	1	1.1875	2.19	0.188	0.375	1.45
22713 - 4	CAT40 x FMA1" - 4"	7.374	4	0.687	1	1.1875	2.19	0.188	0.375	2.00
22713 - 6	CAT40 x FMA1" - 6"	9.374	6	0.687	1	1.1875	2.19	0.188	0.375	2.75
22715	CAT40 x FMA1-1/4" - 2.21"	5.584	2.21	0.687	1.25	1.5	2.75	0.25	0.5	2.60
22715 - 4	CAT40 x FMA1-1/4" - 4"	7.374	4	0.687	1.25	1.5	2.75	0.25	0.5	2.75
22715 - 6	CAT40 x FMA1-1/4" - 6"	9.374	6	0.687	1.25	1.5	2.75	0.25	0.5	2.95
22717	CAT40 x FMA1-1/2" - 2.21"	5.837	2.21	0.938	1.5	1.875	3.81	0.349	0.625	2.70
22717 - 4	CAT40 x FMA1-1/2" - 4"	7.627	4	0.938	1.5	1.875	3.81	0.349	0.625	2.95
22721	CAT50 x FMA3/4" - 1.5"	6.187	1.5	0.687	0.75	0.875	-	0.188	0.3125	4.20
22721 - 3.5	CAT50 x FMA3/4" - 3.5"	8.187	3.5	0.687	0.75	0.875	1.69	0.188	0.3125	4.40
22721 - 5.5	CAT50 x FMA3/4" - 5.5"	10.187	5.5	0.687	0.75	0.875	1.69	0.188	0.3125	4.60
22723	CAT50 x FMA1" - 2"	6.687	2	0.687	1	1.1875	2.19	0.188	0.375	4.50
22723 - 4	CAT50 x FMA1" - 4"	8.687	4	0.687	1	1.1875	2.19	0.188	0.375	4.70
22723 - 6	CAT50 x FMA1" - 6"	10.687	6	0.687	1	1.1875	2.19	0.188	0.375	4.90
22725	CAT50 x FMA1-1/4" - 1.5"	6.187	1.5	0.687	1.25	1.5	2.75	0.25	0.5	4.70
22725 - 3.5	CAT50 x FMA1-1/4" - 3.5"	8.187	3.5	0.687	1.25	1.5	2.75	0.25	0.5	4.80
22725 - 5	CAT50 x FMA1-1/4" - 5"	9.687	5	0.687	1.25	1.5	2.75	0.25	0.5	5.00
22725 - 6	CAT50 x FMA1-1/4" - 6"	10.687	6	0.687	1.25	1.5	2.75	0.25	0.5	5.10
22727	CAT50 x FMA1-1/2" - 2.4"	7.338	2.4	0.938	1.5	1.875	3.81	0.349	0.625	5.00
22727 - 4	CAT50 x FMA1-1/2" - 4"	8.938	4	0.938	1.5	1.875	3.81	0.349	0.625	5.20
22727 - 6	CAT50 x FMA1-1/2" - 6"	10.938	6	0.938	1.5	1.875	3.81	0.349	0.625	5.40
22729	CAT50 x FMA2" - 2.4"	7.338	2.4	0.938	2	2.5	4.88	0.384	0.75	5.40
22729 - 4	CAT50 x FMA2" - 4"	8.938	4	0.938	2	2.5	4.88	0.384	0.75	5.60

Features:

- ▶ d1 tolerance: h6.
- ▶ Coolant through tool holder; screw with coolant flute needs to be purchased additionally.

Product information:

- ▶ The pre-balance reaches G6.3 3,000 rpm. Higher balancing grade and revolution can be done upon request but additional charge is needed.
- ▶ AD+B type is available, please inform us when making an order.

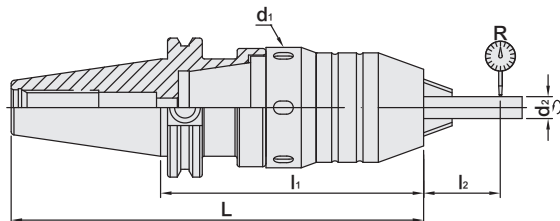
Pull Stud	Screw
	
P.W-62	P.W-89



CAT / SPH DRILL CHUCK ADAPTER

INTEGRATED TYPE

CAT / SPH 直結式鑽夾頭



INCHES

MODEL NO.	TYPE	L	l ₁	l ₂	d ₁	d ₂	R	WEIGHT (KGS)
22454	CAT40 x SPH5/16" - 4"	6.69	4	2.16	1.65	0.24	0.00157	1.85
22458	CAT40 x SPH1/2" - 4.75"	7.44	4.75	2.95	2.13	0.51	0.00157	2.10
22462	CAT40 x SPH5/8" - 6"	8.69	6	3.15	2.44	0.51	0.00157	2.95
22470	CAT50 x SPH5/16" - 4"	8	4	2.16	1.65	0.24	0.00157	2.10
22474	CAT50 x SPH1/2" - 4.25"	8.25	4.25	2.95	2.13	0.51	0.00157	2.85
22478	CAT50 x SPH5/8" - 4.5"	8.5	4.5	3.15	2.44	0.51	0.00157	3.45

Features:

- ▶ The adapter has a taper design to assemble with drill chuck and then lock with a screw, ensuring to have better stability and drill chuck would not fall off.
- ▶ Used for drilling & tapping.
- ▶ The clamping capacity of SPH5/16" is 1/16"~5/16"
- ▶ The clamping capacity of SPH1/2" is 1/16"~1/2"
- ▶ The clamping capacity of SPH5/8" is 1/8"~5/8"

Product information:

- ▶ The pre-balance reaches G6.3 8,000 rpm. Higher balancing grade and revolution can be done upon request but additional charge is needed.

Standard Accessory: • SPANNER

Pull Stud

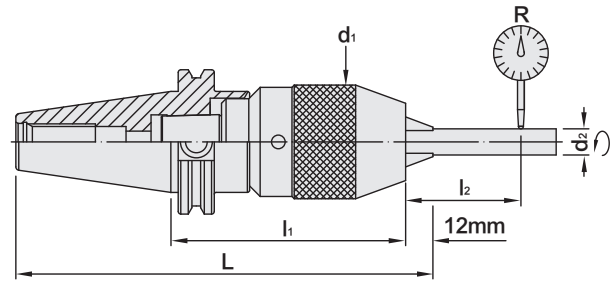


P.W-62



CAT / SPU DRILL CHUCK ADAPTER

CAT / SPU 直結式鑽夾頭



INCHES

MODEL NO.	TYPE	L	l ₁	l ₂	d ₁	d ₂	R	WEIGHT (KGS)
22403	CAT40 x SPU1/2" - 4"	7.159	4	2.615	1.969	0.394	0.00157	1.95
22404	CAT40 x SPU5/8" - 4.6"	7.759	4.6	3.149	1.969	3.215	0.00157	2.25
22405	CAT50 x SPU1/2" - 4"	8.472	4	2.953	1.969	0.512	0.00157	4.35

Features:

- ▶ The adapter has a taper design to assemble with drill chuck and then lock with a screw, ensuring to have better stability and drill chuck would not fall off.
- ▶ Used for drilling.
- ▶ The clamping capacity of SPU1/2" is 1/16"~1/2"
- ▶ The clamping capacity of SPU5/8" is 1/8"~5/8"

Product information:

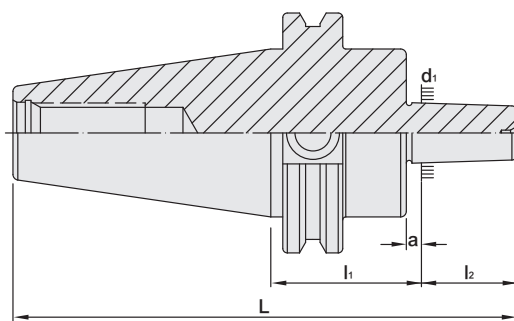
- ▶ The pre-balance reaches G6.3 8,000 rpm. Higher balancing grade and revolution can be done upon request but additional charge is needed.

Standard Accessory: • SPANNER

Pull Stud	Spanner
	
P.W-62	P.W-72

CAT DRILL CHUCK ARBOR

CAT 鑽夾頭刀柄



INCHES

MODEL NO.	TYPE	L	l ₁	l ₂	d ₁	a	WEIGHT (KGS)
22511	CAT40 x JTA2 - 1.57"	5.132	1.57	0.875	0.559	0.157	1.25
22512	CAT40 x JTA3 - 1.57"	5.475	1.57	1.219	0.811	0.197	1.25
22513	CAT40 x JTA6 - 1.57"	5.257	1.57	1	0.676	0.157	1.25
22515	CAT40 x JTA33 - 1.57"	5.257	1.57	1	0.624	0.157	1.25
22521	CAT50 x JTA2 - 1.57"	6.445	1.57	0.875	0.559	0.157	3.55
22523	CAT50 x JTA6 - 1.57"	6.57	1.57	1	0.676	0.157	3.65
22525	CAT50 x JTA33 - 1.57"	6.57	1.57	1	0.624	0.157	3.65
22527	CAT50 x JTA3 - 1.57"	6.789	1.57	1.219	0.811	0.197	3.65

Features:

- ▶ For drill chuck according to DIN 238.

Product information:

- ▶ The pre-balance reaches G6.3 8,000 rpm. Higher balancing grade and revolution can be done upon request but additional charge is needed.

Keyless Drill Chuck Pull Stud



P.W-83

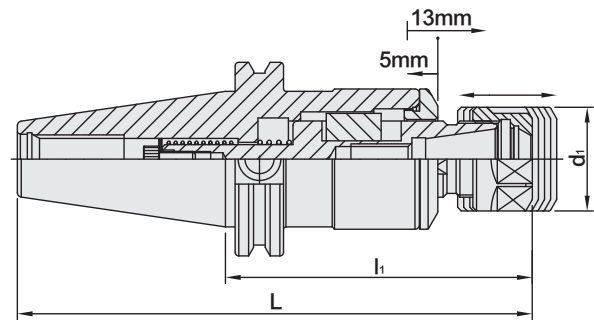


P.W-62

CAT EXPANSION ER TAPPER



CAT / ETP 伸縮 ER 攻牙器



T W PAT NO. M298033
 T W PAT NO. M311791
 J P PAT NO. 3128766
 K R PAT NO. 20-0433603
 C N PAT NO. ZL200620132661.0
 C H PAT NO. 696550
 T R PAT NO. TR 2007 02942 Y
 I T PAT NO. N.0000266731

INCHES

MODEL NO.	TYPE	L	l ₁	d ₁	COLLET	CAPACITY	WEIGHT (KGS)
23102	CAT40 x ETP16 - 4.75"	7.437	4.75	1.102	ER16	0.125 ~ 0.394	1.65
23104	CAT40 x ETP16 - 6"	8.687	6	1.102	ER16	0.125 ~ 0.394	1.85
23106	CAT40 x ETP20 - 4"	6.687	4	1.732	ER20	0.125 ~ 0.625	1.65
23108	CAT40 x ETP20 - 6"	8.687	6	1.732	ER20	0.125 ~ 0.625	1.90
23110	CAT40 x ETP32 - 4.75"	7.437	4.75	2.205	ER32	0.125 ~ 1.0625	1.76
23116	CAT50 x ETP20 - 4"	8	4	1.732	ER20	0.125 ~ 0.625	4.30
23118	CAT50 x ETP20 - 6"	10	6	1.732	ER20	0.125 ~ 0.625	4.60
23120	CAT50 x ETP32 - 4.75"	8.75	4.75	2.205	ER32	0.125 ~ 1.0625	4.65

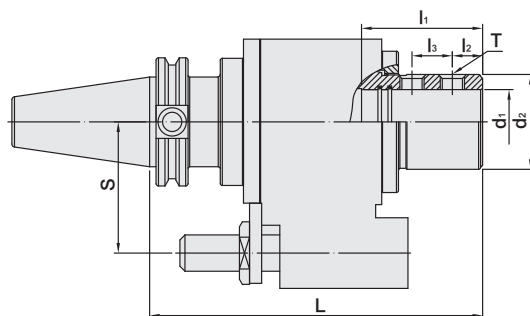
Standard Accessory: • NUT

Collet	Nut	Pull Stud	Preset Screw	Spanner
P.W-7~10,20~26	P.W-48	P.W-62	P.W-88	P.W-68~71



CAT SIDE LOCK OIL HOLE HOLDER

CAT / OSL 側固式油路刀把



INCHES





MODEL NO.	TYPE	L	l ₁	l ₂	l ₃	d ₁	d ₂	S	T	WEIGHT (KGS)
28001	CAT40 x OSL16 - 6.5"	6.5	1.89	0.98	-	0.629	1.83	2.56	M12 x 1.75P	3.50
28003	CAT40 x OSL20 - 6.5"	6.5	1.97	0.98	-	0.787	1.83	2.56	M12 x 1.75P	3.50
28005	CAT40 x OSL25 - 6.5"	6.5	2.2	0.59	0.79	0.984	1.83	2.56	M12 x 1.75P	3.50
28007	CAT40 x OSL32 - 6.5"	6.5	2.36	0.59	0.79	1.259	1.85	2.56	M12 x 1.75P	3.50
28002	CAT40 x OSL16 - 6.5"S	6.5	1.89	0.98	-	0.629	1.83	2.36	M12 x 1.75P	3.50
28004	CAT40 x OSL20 - 6.5"S	6.5	1.97	0.98	-	0.787	1.83	2.36	M12 x 1.75P	3.50
28006	CAT40 x OSL25 - 6.5"S	6.5	2.2	0.59	0.79	0.984	1.83	2.36	M12 x 1.75P	3.50
28008	CAT40 x OSL32 - 6.5"S	6.5	2.36	0.59	0.79	1.259	1.85	2.36	M12 x 1.75P	3.80
28009	CAT50 x OSL16 - 6.5"	6.5	1.89	0.98	-	0.629	2.2	3.15	M14 x 2.0P	7.00
28011	CAT50 x OSL20 - 6.5"	6.5	1.97	0.98	-	0.787	2.2	3.15	M12 x 1.75P	7.50
28013	CAT50 x OSL25 - 6.5"	6.5	2.2	0.59	0.79	0.984	2.2	3.15	M16 x 2.0P	7.50
28015	CAT50 x OSL32 - 6.69"	6.69	2.36	0.59	0.79	1.259	2.2	3.15	M16 x 2.0P	7.80
28017	CAT50 x OSL40 - 6.69"	6.69	2.44	0.59	0.98	1.575	2.2	3.15	M14 x 2.0P	8.50
28019	CAT50 x OSL16 - 6.5"M	6.5	1.89	0.98	-	0.629	2.2	3.23	M14 x 2.0P	7.10
28021	CAT50 x OSL20 - 6.5"M	6.5	1.97	0.98	-	0.787	2.2	3.23	M12 x 1.75P	7.60
28023	CAT50 x OSL25 - 6.5"M	6.5	2.2	0.59	0.79	0.984	2.2	3.23	M16 x 2.0P	7.70
28025	CAT50 x OSL32 - 6.69"M	6.69	2.36	0.59	0.79	1.259	2.2	3.23	M16 x 2.0P	7.80
28027	CAT50 x OSL40 - 6.69"M	6.69	2.44	0.59	0.98	1.575	2.2	3.23	M14 x 2.0P	8.50
28029	CAT50 x OSL16 - 6.5"L	6.5	1.89	0.98	-	0.629	2.2	3.35	M14 x 2.0P	7.20
28031	CAT50 x OSL20 - 6.5"L	6.5	1.97	0.98	-	0.787	2.2	3.35	M12 x 1.75P	7.80
28033	CAT50 x OSL25 - 6.5"L	6.5	2.2	0.59	0.79	0.984	2.2	3.35	M16 x 2.0P	7.80
28035	CAT50 x OSL32 - 6.69"L	6.69	2.36	0.59	0.79	1.259	2.2	3.35	M16 x 2.0P	8.00
28037	CAT50 x OSL40 - 6.69"L	6.69	2.44	0.59	0.98	1.575	2.2	3.35	M14 x 2.0P	8.70

Features:

- ▶ Internal hole tolerance is H5.
- ▶ The tolerance of tool shank diameter is within h6.
- ▶ Used for machines w/o center or side coolant and achieve coolant through tools.

Product information:

- ▶ Water pressure up to 7 kgf/cm².
- ▶ Max. revolution: 3,000 rpm.

Straight Sleeve	Fixed Block	Pull Stud	Lock Screw
			
P.W-83	P.W-94	P.W-62	P.W-90



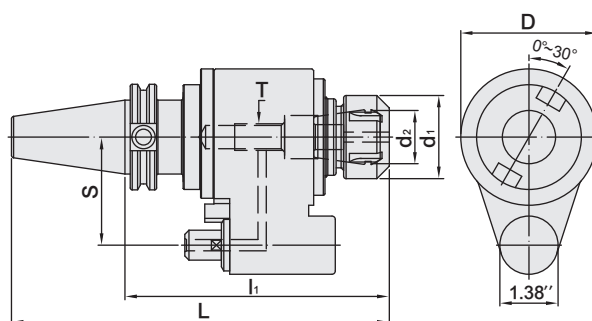
CAT / OHER OIL HOLE COLLET CHUCK



CAT / OHER 油路刀把



T W PAT NO. M298033
 T W PAT NO. M311791
 J P PAT NO. 3128766
 K R PAT NO. 20-0433603
 C N PAT NO. ZL200620132661.0
 C H PAT NO. 696550
 T R PAT NO. TR 2007 02942 Y
 I T PAT NO. N.0000266731



INCHES

MODEL NO.	TYPE	L	l ₁	D	d ₂ ER	S	T	SIZE RANGE	WEIGHT (KGS)
28202	CAT40 x OHER16 - 6.3"	8.987	6.3	3.228	16	2.56	M10	0.0156 ~ 0.375	3.80
28204	CAT40 x OHER20 - 6.3"	8.987	6.3	3.228	20	2.56	M12	0.0625 ~ 0.5	4.10
28206	CAT40 x OHER25 - 6.3"	8.987	6.3	3.228	25	2.56	M16	0.0625 ~ 0.625	4.30
28208	CAT40 x OHER32 - 6.3"	8.987	6.3	3.228	32	2.56	M16	0.125 ~ 0.75	4.50
28210	CAT50 x OHER16 - 6.3"	10.3	6.3	3.858	16	3.15	M10	0.0156 ~ 0.375	7.00
28212	CAT50 x OHER20 - 6.3"	10.3	6.3	3.858	20	3.15	M12	0.0625 ~ 0.5	7.10
28214	CAT50 x OHER25 - 6.3"	10.3	6.3	3.858	25	3.15	M16	0.0625 ~ 0.625	7.20
28216	CAT50 x OHER32 - 6.3"	10.3	6.3	3.858	32	3.15	M16	0.125 ~ 0.75	7.30
28218	CAT50 x OHER40 - 6.3"	10.3	6.3	3.858	40	3.15	M20	0.125 ~ 1	7.50

Features:

- ▶ Internal hole tolerance is H5.
- ▶ The tolerance of tool shank diameter is within h6.
- ▶ Used for machines w/o center or side coolant and achieve coolant through tools.

Product information:

- ▶ Water pressure up to 7 kgf/cm².
- ▶ Max. revolution: 3,000 rpm.

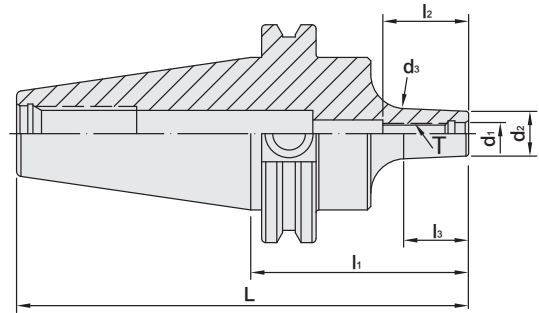
Standard Accessory: • NUT

Collet	Nut	Fixed Block	Pull Stud	Preset Screw	Spanner
P.W-7~17	P.W-48,51	P.W-94	P.W-62	P.W-90	P.W-68~71



CAT / SOM SCREWED END MILL HOLDER

CAT / SOM 螺紋鎖固式刀桿



INCHES

MODEL NO.	TYPE	L	l ₁	l ₂	l ₃	d ₁	d ₂	d ₃	T	WEIGHT (KGS)
29330	CAT40 x SOM6 - 2.5"	5.187	2.5	0.984	0.933	0.256	0.512	0.593	M6	1.20
29332	CAT40 x SOM8 - 2.5"	5.187	2.5	0.984	0.933	0.335	0.591	0.672	M8	1.20
29334	CAT40 x SOM10 - 2.5"	5.187	2.5	0.984	0.933	0.413	0.748	0.829	M10	1.20
29336	CAT40 x SOM12 - 3"	5.687	3	1.22	1.042	0.492	0.827	0.883	M12	1.30
29338	CAT40 x SOM16 - 3"	5.687	3	1.22	1.433	0.669	0.984	1.106	M16	1.40
29360	CAT50 x SOM6 - 2.5"	6.5	2.5	0.984	0.933	0.256	0.512	0.593	M6	3.00
29362	CAT50 x SOM8 - 2.5"	6.5	2.5	0.984	0.933	0.335	0.591	0.672	M8	3.00
29364	CAT50 x SOM10 - 2.5"	6.5	2.5	0.984	0.933	0.413	0.748	0.829	M10	3.00
29366	CAT50 x SOM12 - 3"	7	3	1.22	1.433	0.492	0.827	0.917	M12	3.10
29368	CAT50 x SOM16 - 3"	7	3	1.22	1.433	0.669	0.984	1.173	M16	3.20

Product information:

- ▶ The pre-balance reaches G6.3 10,000 rpm. Higher balancing grade and revolution can be done upon request but additional charge is needed.
- ▶ AD+B type is available, please inform us when making an order.

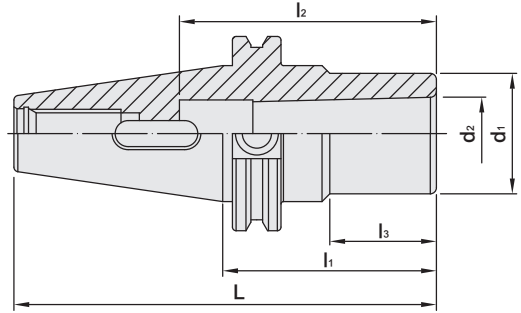
STR Cutting Tool	RG Cutting Tool	DM Cutting Tool	Extension Spacer	Pull Stud
				
P.W-75	P.W-76	P.W-77	P.W-78	P.W-62

CAT MORSE TAPER ADAPTER

TANG TYPE

CAT 斜柄鑽頭套筒

(DIN 228-2)



INCHES

MODEL NO.	TYPE	L	l ₁	l ₂	l ₃	d ₁	d ₂	WEIGHT (KGS)
22611	CAT40 x MTA1 - 1.6"	4.287	1.6	2.205	0.124	1	0.475	1.30
22613	CAT40 x MTA2 - 2"	4.687	2	2.638	0.323	1.25	0.7	1.50
22615	CAT40 x MTA3 - 2.75"	5.437	2.75	3.307	1.287	1.575	0.938	1.15
22617	CAT40 x MTA4 - 3.75"	6.437	3.75	4.213	2.372	1.75	1.23	1.20
22621	CAT50 x MTA1 - 2"	6	2	2.205	0.504	1	0.475	4.05
22623	CAT50 x MTA2 - 2"	6	2	2.638	0.504	1.25	0.7	4.40
22625	CAT50 x MTA3 - 2.5"	6.5	2.5	3.307	1.004	1.55	0.938	4.50
22627	CAT50 x MTA4 - 3.3"	7.3	3.3	4.213	1.804	1.75	1.23	4.90
22629	CAT50 x MTA5 - 4.1"	8.1	4.1	5.315	2.587	2.48	1.748	5.15

Features:

- ▶ The tools used for MTA are consistent with Morse Taper DIN 228 FORM B (with Tang).

Product information:

- ▶ The pre-balance reaches G6.3 8,000 rpm. Higher balancing grade and revolution can be done upon request but additional charge is needed.

Pull Stud

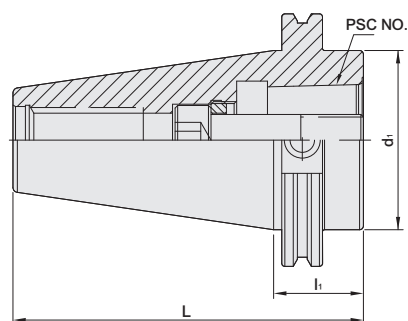


P.W-62



CAT / PSC ADAPTER

CAT 套筒



MODEL NO.	TYPE	NO.	L	l ₁	d ₁	T	MAX. TORQUE		WEIGHT (KGS)
							Nm	ft-lbs	
31.501.32.035	CAT40 x PSC32 - 35	PSC32	103.249	35	44.45	M12 x 1.5P	45	33	0.99
31.501.40.035	CAT40 x PSC40 - 35	PSC40	103.249	35	44.45	M14 x 1.5P	55	40	0.90
31.501.50.035	CAT40 x PSC50 - 35	PSC50	103.249	35	44.45	M16 x 1.5P	95	70	0.82
31.501.63.090	CAT40 x PSC63 - 90	PSC63	158.249	90	44.45	M20 x 2.0P	170	125	1.83
32.501.32.035	CAT50 x PSC32 - 35	PSC32	136.6	35	69.85	M12 x 1.5P	45	33	3.00
32.501.40.035	CAT50 x PSC40 - 35	PSC40	136.6	35	69.85	M14 x 1.5P	55	40	2.95
32.501.50.035	CAT50 x PSC50 - 35	PSC50	136.6	35	69.85	M16 x 1.5P	95	70	2.85
32.501.63.035	CAT50 x PSC63 - 35	PSC63	136.6	35	69.85	M20 x 2.0P	170	125	2.63

INCHES

32.501.63.400	CAT50 x PSC63 - 4"	PSC63	184.15	101.6	69.85	M20 x 2.0P	170	125	4.05
32.501.63.600	CAT50 x PSC63 - 6"	PSC63	234.95	152.4	69.85	M20 x 2.0P	170	125	5.14
32.501.63.800	CAT50 x PSC63 - 8"	PSC63	285.75	203.2	69.85	M20 x 2.0P	170	125	6.23
32.501.63.100	CAT50 x PSC63 - 10"	PSC63	336.55	254	69.85	M20 x 2.0P	170	125	7.31
32.501.63.120	CAT50 x PSC63 - 12"	PSC63	387.35	304.8	69.85	M20 x 2.0P	170	125	8.40
32.501.80.374	CAT50 x PSC80 - 3.74"	PSC80	196.596	94.996	80.01	M20 x 2.0P	170	125	3.05

Pull Stud

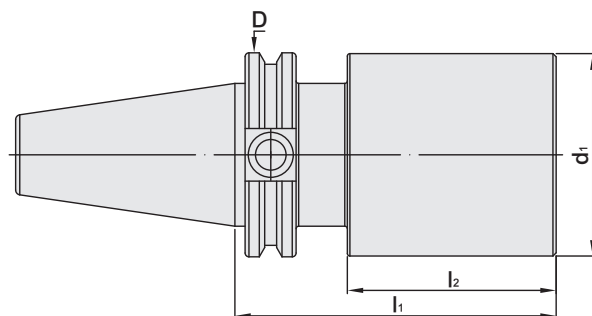


P.W-62



CAT BLANK

CAT 素材



INCHES

MODEL NO.	TYPE	D	d ₁	l ₁	l ₂	WEIGHT (KGS)
31.001.86.800	CAT40 x ϕ 2" - 8"	2.5	2	8	6.625	3.64
31.001.92.600	CAT40 x ϕ 2.5" - 6"	2.5	2.5	6	4.625	3.88
31.001.92.787	CAT40 x ϕ 2.5" - 7.87"	2.5	2.5	7.87	6.495	5.04
32.001.98.100	CAT50 x ϕ 3" - 10"	3.875	3	10	8.625	10.8
32.001.99.800	CAT50 x ϕ 4" - 8"	3.875	4	8	6.625	13.6
32.001.99.100	CAT50 x ϕ 4" - 10"	3.875	4	10	8.625	16.8

Pull Stud



P.W-62



MEMO

Blank lined area for writing a memo.

