



# PRO COLLET CHUCK SERIES

PRO COLLET CHUCK | PRO NON WIND RESISTANCE NUT | PRO COLLET

**NO.2020-01**

**HIGH PRECISION**

**HEAVY DUTY MACHINING**

**HIGH STABILITY**

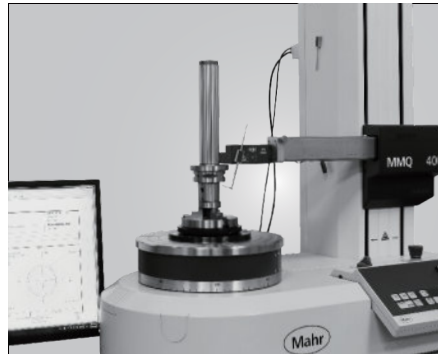
**HIGH SPEED**  
G2.5 25000rpm



[www.syic.com](http://www.syic.com)



# COMPANY INTRODUCTION





# 品質創造信譽 信譽保證品質

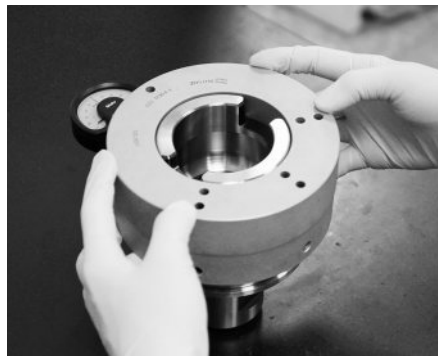
Quality creates reputation; reputation ensures quality.

## About SYIC

Established in 1979, SYIC is a professional manufacturer of precise tool holders, cutting tools, angel heads, boring series and collets with more than 500 employees. The taper types of tool holders we manufacture include BT (MAS403), CAT (ANSI B5.50), DAT (DIN69871-A), HSK (DIN69893), PSC (ISO26623-1), VDI (DIN ISO10889) and straight shank holders.

SYIC is certified to ISO9001 and ISO14001. With contribution to the design, production and sale of high accuracy and inventive products, SYIC has over 300 pieces of patents worldwide. SYIC keeps investing in high-end equipment and measuring instruments from Japan and Europe to implement excellent quality control and manufacturing capability.

SYIC keeps the core value "Quality creates reputation; reputation ensures quality" to impress our customers, possessing professional technical skills to provide comprehensive solutions for customers, improving customers' machining efficiency, and enhancing the mutual competitiveness with customers. Based on the mission of "Excellent service, supreme quality," SYIC will continue to launch more high precision products to customers.





# Tool Holders

**Your reliable partner!**

————— CNC turning, milling and grinding —————

BMT  
PSC  
HSK  
SBT  
SCAT  
SDAT

Premium  
Quality

[www.syic.com](http://www.syic.com)

供需平衡 共榮共存

Maintain the balance of suppliers and customers and grow together.

未來之路 無限寬廣

Create a great future with infinite opportunities.

營運獲利 永續經營

Run a profitable company with sustainable development.

合作到底 共創通贏

Keep everlasting cooperation and together create a win-win situation.

成就彼此 榮耀一切

Support each other and accomplish mutual success.



### **Innovation is our mission!**

SYIC is committed to developing high precision products to optimize the machining process and offering professional technical service. With experienced technical professionals, our products are developed in response to different types of industries. We aim to achieve customers' demands from different industries including machining industry, mold and die industry, aerospace industry, automotive industry, and energy industry. We offer the most professional and technical service, effectively resolve your machining problems to create maximum production efficiency.

# PRO COLLET CHUCK

SBT / PRO COLLET CHUCK	9
SCAT / PRO COLLET CHUCK	10
SDAT / PRO COLLET CHUCK	11
HSK / PRO COLLET CHUCK	12
PSC / PRO COLLET CHUCK	13

# PRO COLLET CHUCK

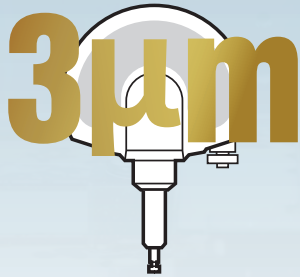


**HIGH PRECISION**

**HEAVY DUTY MACHINING**

**HIGH STABILITY**

**HIGH SPEED**  
G2.5 25000rpm



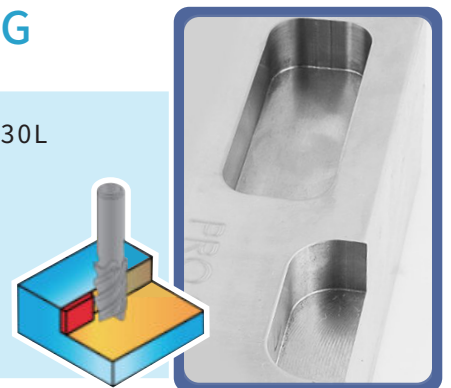
- ▶ The collet chuck body and clamping nut are tightened with closer contact due to the patent design of thread and radial straight parts and achieve perfect stability and strength.
- ▶ Self-locking taper brings high runout accuracy.
- ▶ Tool insertion depth 90mm makes it more flexible and convenient for various application.
- ▶ Clamping nuts are designed without slots to reduce the wind shear at high speed and can be tightened by using a torque wrench to ensure better machining performance.
- ▶ Power Good treatment increases the clamping power by almost 100%, improving chip removal rate and extending tool life.



## CUTTING TEST-HELICAL MILLING

Tool Holder: SBT40xPRO32-90	Cutting Tool: DC12-4T-30L
Machine: NSV102AM	Material: SUS304
S: 4281rpm	F: 2002mm/min
Ap: 15mm	Ae: 0.8mm

**SPINDLE LOAD: 3%**  
**SURFACE ROUGHNESS Ra: 0.616µm**

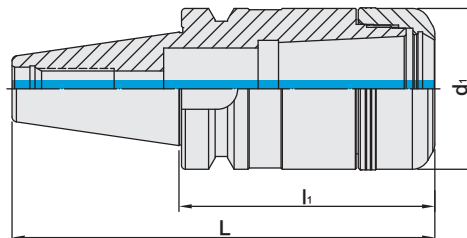




# SBT / PRO COLLET CHUCK

Dual  
DRIVE+

SBT / PRO 法蘭加厚型筒夾式刀桿



MODEL NO.	TYPE	L	l <sub>1</sub>	d <sub>1</sub>	SIZE RANGE	WEIGHT (KGS)
5026-290-025-070	SBT40 x PRO25 - 70	135.4	70	58	4 ~ 25	1.33
5026-290-025-100	SBT40 x PRO25 - 100	165.4	100	58	4 ~ 25	1.91
5026-290-025-120	SBT40 x PRO25 - 120	185.4	120	58	4 ~ 25	2.30
5026-290-032-100	SBT40 x PRO32 - 100	165.4	100	63	8 ~ 32	1.79
5026-290-032-120	SBT40 x PRO32 - 120	185.4	120	63	8 ~ 32	2.34
5027-290-025-080	SBT50 x PRO25 - 80	181.8	80	58	4 ~ 25	3.95
5027-290-025-100	SBT50 x PRO25 - 100	201.8	100	58	4 ~ 25	4.30
5027-290-025-120	SBT50 x PRO25 - 120	221.8	120	58	4 ~ 25	4.66
5027-290-032-080	SBT50 x PRO32 - 80	181.8	80	63	8 ~ 32	3.81
5027-290-032-100	SBT50 x PRO32 - 100	201.8	100	63	8 ~ 32	4.18
5027-290-032-120	SBT50 x PRO32 - 120	221.8	120	63	8 ~ 32	4.75

**Features:**

- ▶ Ideal for heavy-duty machining and assures optimal stability.
- ▶ Used with PRO collet with 3µm runout accuracy, ensuring perfect surface finish of workpiece and longer tool life.
- ▶ Balanced at G2.5 25,000rpm, suitable for high speed machining.

**Standard Accessory:** • NUT

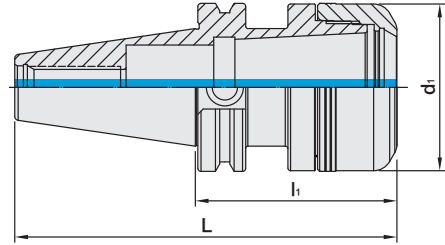
Collet	Nut	Pull Stud	Spanner	Torque Wrench Adaptor (Pull Stud)	Spanner (Pull Stud)	Preset Screw
P.16	P.17	P.18	P.22-24	P.25	P.26	P.27



# SCAT / PRO COLLET CHUCK

Dual  
DRIVE+

SCAT / PRO 法蘭加厚型筒夾式刀桿



INCHES

MODEL NO.	TYPE	L	l <sub>1</sub>	d <sub>1</sub> (mm)	SIZE RANGE	WEIGHT (KGS)
5043-290-025-300	SCAT40 x PRO25 - 3"	5.687	3.00	58	3/16 ~ 1	1.33
5043-290-025-400	SCAT40 x PRO25 - 4"	6.687	4.00	58	3/16 ~ 1	1.82
5043-290-032-300	SCAT40 x PRO32 - 3"	5.687	3.00	63	5/16 ~ 1-1/4	1.13
5043-290-032-400	SCAT40 x PRO32 - 4"	6.687	4.00	63	5/16 ~ 1-1/4	1.67
5044-290-025-315	SCAT50 x PRO25 - 3.15"	7.15	3.15	58	3/16 ~ 1	3.46
5044-290-025-400	SCAT50 x PRO25 - 4"	8.00	4.00	58	3/16 ~ 1	3.84
5044-290-032-315	SCAT50 x PRO32 - 3.15"	7.15	3.15	63	5/16 ~ 1-1/4	3.47
5044-290-032-400	SCAT50 x PRO32 - 4"	8.00	4.00	63	5/16 ~ 1-1/4	3.74

**Features:**

- ▶ Ideal for heavy-duty machining and assures optimal stability.
- ▶ Used with PRO collet with 3µm runout accuracy, ensuring perfect surface finish of workpiece and longer tool life.
- ▶ Balanced at G2.5 25,000rpm, suitable for high speed machining.

**Standard Accessory: • NUT**

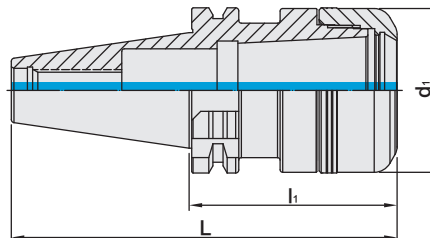
Collet	Nut	Pull Stud	Spanner	Torque Wrench Adaptor (Pull Stud)	Spanner (Pull Stud)	Preset Screw
P.16	P.17	P.19	P.22-24	P.25	P.26	P.27



# SDAT / PRO COLLET CHUCK



SDAT / PRO 法蘭加厚型筒夾式刀桿



MODEL NO.	TYPE	L	l <sub>1</sub>	d <sub>1</sub>	SIZE RANGE	WEIGHT (KGS)
5066-290-025-070	SDAT40 x PRO25 - 70	118.4	50	58	4 ~ 25	1.25
5066-290-025-080	SDAT40 x PRO25 - 80	148.4	80	58	4 ~ 25	1.44
5066-290-025-100	SDAT40 x PRO25 - 100	168.4	100	58	4 ~ 25	1.83
5066-290-025-120	SDAT40 x PRO25 - 120	188.4	120	58	4 ~ 25	2.22
5066-290-032-080	SDAT40 x PRO32 - 80	148.4	80	63	8 ~ 32	1.25
5066-290-032-100	SDAT40 x PRO32 - 100	168.4	100	63	8 ~ 32	1.67
5066-290-032-120	SDAT40 x PRO32 - 120	188.4	120	63	8 ~ 32	2.16
5067-290-025-070	SDAT50 x PRO25 - 70	171.75	70	58	4 ~ 25	3.14
5067-290-025-080	SDAT50 x PRO25 - 80	181.75	80	58	4 ~ 25	3.32
5067-290-025-100	SDAT50 x PRO25 - 100	201.75	100	58	4 ~ 25	3.68
5067-290-025-140	SDAT50 x PRO25 - 140	241.75	140	58	4 ~ 25	4.40
5067-290-032-080	SDAT50 x PRO32 - 80	181.75	80	63	8 ~ 32	3.16
5067-290-032-100	SDAT50 x PRO32 - 100	201.75	100	63	8 ~ 32	3.59
5067-290-032-140	SDAT50 x PRO32 - 140	241.75	140	63	8 ~ 32	4.44

**Features:**

- ▶ Ideal for heavy-duty machining and assures optimal stability.
- ▶ Used with PRO collet with 3µm runout accuracy, ensuring perfect surface finish of workpiece and longer tool life.
- ▶ Balanced at G2.5 25,000rpm, suitable for high speed machining.

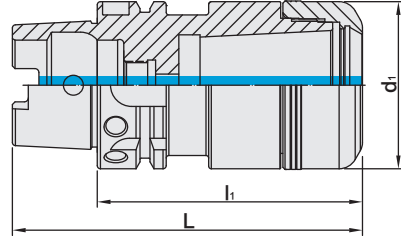
**Standard Accessory: • NUT**

Collet	Nut	Pull Stud	Spanner	Torque Wrench Adaptor (Pull Stud)	Spanner (Pull Stud)	Preset Screw
P.16	P.17	P.20	P.22-24	P.25	P.26	P.27



# HSK / PRO COLLET CHUCK

## HSK / PRO 筒夾式刀桿









MODEL NO.	TYPE	L	l <sub>1</sub>	d <sub>1</sub>	SIZE RANGE	WEIGHT (KGS)
5072-290-025-100	HSK50A x PRO25 - 100	125	100	58	4 ~ 25	1.26
5072-290-025-120	HSK50A x PRO25 - 120	145	120	58	4 ~ 25	1.59
5072-290-025-150	HSK50A x PRO25 - 150	175	150	58	4 ~ 25	2.08
5072-290-032-120	HSK50A x PRO32 - 120	145	120	63	8 ~ 32	1.57
5072-290-032-150	HSK50A x PRO32 - 150	175	150	63	8 ~ 32	2.20
5073-290-025-100	HSK63A x PRO25 - 100	132	100	58	4 ~ 25	1.62
5073-290-025-120	HSK63A x PRO25 - 120	152	120	58	4 ~ 25	1.96
5073-290-025-150	HSK63A x PRO25 - 150	182	150	58	4 ~ 25	2.56
5073-290-032-100	HSK63A x PRO32 - 100	132	100	63	8 ~ 32	1.57
5073-290-032-120	HSK63A x PRO32 - 120	152	120	63	8 ~ 32	1.93
5073-290-032-150	HSK63A x PRO32 - 150	182	150	63	8 ~ 32	2.54
5075-290-025-100	HSK100A x PRO25 - 100	150	100	58	4 ~ 25	3.00
5075-290-025-120	HSK100A x PRO25 - 120	170	120	58	4 ~ 25	3.40
5075-290-025-150	HSK100A x PRO25 - 150	200	150	58	4 ~ 25	3.99
5075-290-032-100	HSK100A x PRO32 - 100	150	100	63	8 ~ 32	2.99
5075-290-032-120	HSK100A x PRO32 - 120	170	120	63	8 ~ 32	3.45
5075-290-032-150	HSK100A x PRO32 - 150	200	150	63	8 ~ 32	3.94

**Features:**

- ▶ Ideal for heavy-duty machining and assures optimal stability.
- ▶ Used with PRO collet with 3µm runout accuracy, ensuring perfect surface finish of workpiece and longer tool life.
- ▶ Balanced at G2.5 25,000rpm, suitable for high speed machining.

**Standard Accessory: • NUT**

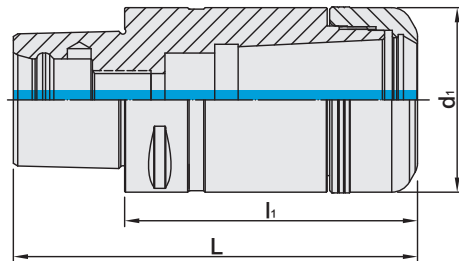
Collet	Nut	Coolant Supply Unit	Key	Spanner	Preset Screw
					
P.16	P.17	P.21	P.21	P.22-24	P.27





# PSC / PRO COLLET CHUCK

## PSC / PRO 筒夾式刀桿頭









MODEL NO.	TYPE	L	l <sub>1</sub>	d <sub>1</sub>	SIZE RANGE	WEIGHT (KGS)
5142-290-025-070	PSC50 x PRO25 - 70	100	70	58	4 ~ 25	1.01
5142-290-025-100	PSC50 x PRO25 - 100	130	100	58	4 ~ 25	1.53
5142-290-025-120	PSC50 x PRO25 - 120	150	120	58	4 ~ 25	2.30
5142-290-025-150	PSC50 x PRO25 - 150	180	150	58	4 ~ 25	2.49
5142-290-032-100	PSC50 x PRO32 - 100	130	100	63	8 ~ 32	1.48
5142-290-032-120	PSC50 x PRO32 - 120	150	120	63	8 ~ 32	1.85
5142-290-032-150	PSC50 x PRO32 - 150	180	150	63	8 ~ 32	2.53
5143-290-025-070	PSC63 x PRO25 - 70	108	70	58	4 ~ 25	1.32
5143-290-025-100	PSC63 x PRO25 - 100	138	100	58	4 ~ 25	1.88
5143-290-025-120	PSC63 x PRO25 - 120	158	120	58	4 ~ 25	2.26
5143-290-025-150	PSC63 x PRO25 - 150	188	150	58	4 ~ 25	2.81
5143-290-032-100	PSC63 x PRO32 - 100	138	100	63	8 ~ 32	1.77
5143-290-032-120	PSC63 x PRO32 - 120	158	120	63	8 ~ 32	2.15
5143-290-032-150	PSC63 x PRO32 - 150	188	150	63	8 ~ 32	2.84

**Features:**

- ▶ Ideal for heavy-duty machining and assures optimal stability.
- ▶ Used with PRO collet with 3µm runout accuracy, ensuring perfect surface finish of workpiece and longer tool life.
- ▶ Balanced at G2.5 25,000rpm, suitable for high speed machining.

**Standard Accessory: • NUT**

Collet	Nut	Coolant Supply Unit	Key	Spanner	Preset Screw
					
P.16	P.17	P.21	P.21	P.22-24	P.27



# MEMO

Blank lined area for writing the memo content.



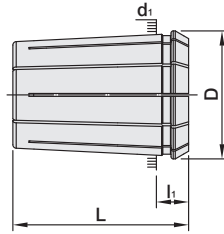
# ACCESSORIES

# CATEGORY

PRO COLLET	16
PRO WIND RESISTANCE NUT	17
BT PULL STUD	18
CAT PULL STUD	19
DAT PULL STUD	20
COOLANT SUPPLY UNIT & KEY	21
SPIGOT INTERCHANGEABLE DIGITAL TORQUE WRENCH	22
NUT ADAPTERS FOR EXCHANGEABLE TORQUE WRENCH	23
BEARING SPANNER	24
TORQUE WRENCH ADAPTOR (FOR PULL STUD)	25
SPANNER FOR PULL STUD	26
SCREW	27

# PRO COLLET

## PRO 彈性筒夾



TYPE	L	l <sub>1</sub>	D	d <sub>1</sub>	WEIGHT (KGS)
PRO - 25	52	10	35	32.9	0.25
PRO - 32	60	11	43.7	41.3	0.50

### PRO - 25

MODEL NO.	SIZE	MODEL NO.	SIZE
5250-290-025-004	4	5250-290-025-015	15
5250-290-025-005	5	5250-290-025-016	16
5250-290-025-006	6	5250-290-025-017	17
5250-290-025-007	7	5250-290-025-018	18
5250-290-025-008	8	5250-290-025-019	19
5250-290-025-009	9	5250-290-025-020	20
5250-290-025-010	10	5250-290-025-021	21
5250-290-025-011	11	5250-290-025-022	22
5250-290-025-012	12	5250-290-025-023	23
5250-290-025-013	13	5250-290-025-024	24
5250-290-025-014	14	5250-290-025-025	25

**INCHES**

5250-290-025-A12	3/16	5250-290-025-A40	5/8
5250-290-025-A16	1/4	5250-290-025-A44	11/16
5250-290-025-A20	5/16	5250-290-025-A48	3/4
5250-290-025-A24	3/8	5250-290-025-A56	7/8
5250-290-025-A28	7/16	5250-290-025-A60	15/16
5250-290-025-A32	1/2	5250-290-025-A64	1
5250-290-025-A36	9/16		

### PRO - 32

MODEL NO.	SIZE	MODEL NO.	SIZE
5250-290-032-004	4	5250-290-032-019	19
5250-290-032-005	5	5250-290-032-020	20
5250-290-032-006	6	5250-290-032-021	21
5250-290-032-007	7	5250-290-032-022	22
5250-290-032-008	8	5250-290-032-023	23
5250-290-032-009	9	5250-290-032-024	24
5250-290-032-010	10	5250-290-032-025	25
5250-290-032-011	11	5250-290-032-026	26
5250-290-032-012	12	5250-290-032-027	27
5250-290-032-013	13	5250-290-032-028	28
5250-290-032-014	14	5250-290-032-029	29
5250-290-032-015	15	5250-290-032-030	30
5250-290-032-016	16	5250-290-032-031	31
5250-290-032-017	17	5250-290-032-032	32
5250-290-032-018	18		

**INCHES**

5250-290-032-A12	3/16	5250-290-032-A40	5/8
5250-290-032-A16	1/4	5250-290-032-A48	3/4
5250-290-032-A20	5/16	5250-290-032-A56	7/8
5250-290-032-A24	3/8	5250-290-032-A64	1
5250-290-032-A28	7/16	5250-290-032-A72	1-1/14
5250-290-032-A32	1/2		

**Features:**

- ▶ Runout accuracy is within 3um.
- ▶ Clamping for single diameter.
- ▶ Self-locking tapers of PRO collets create excellent clamping power.
- ▶ Shorter collet gauge line allows better coverage inside tool holders to ensure machining stability.
- ▶ Long overall collet length offers more clamping length of tool shank than ER system.

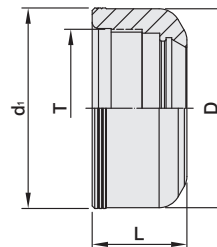




# PRO WIND RESISTANCE NUT



PRO 無風阻螺帽



MODEL NO.	TYPE	L	D	d <sub>1</sub>	T	RECOMMENDED TIGHTENING TORQUE		WEIGHT (KGS)
5201-290-025	PRO - 25	32	58	58.5	Tr48 x 1.5P	110N-m	81 ft/lbs	0.23
5201-290-032	PRO - 32	30	63	63.5	Tr50 x 1.5P	220 N-m	162 ft/lbs	0.25

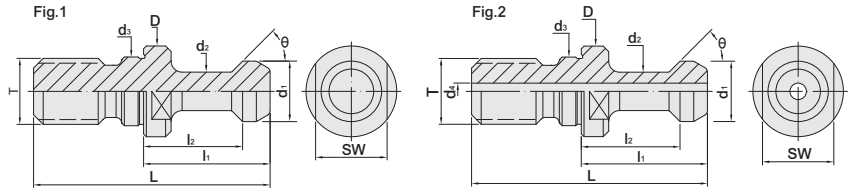
**Features:**

- ▶ PRO nuts without slots reduce the wind shear at high speed, avoiding tools from vibrating due to the audio frequency arisen by wind shear.



# BT PULL STUD

## BT 螺栓拉頭



### W/O Coolant

MODEL NO.	TYPE	L	l <sub>1</sub>	l <sub>2</sub>	D	d <sub>1</sub>	d <sub>2</sub>	d <sub>3</sub>	d <sub>4</sub>	θ	T	SW	Fig.	WEIGHT (KGS)
5230-010-45-00	BT30 - 45°	43	23	18	16.5	11	7	12.5	-	45°	M12	13	1	0.04
5230-011-45-00	BT40 - 45°	60	35	28	23	15	10	17	-	45°	M16	19	1	0.10
5230-012-45-00	BT50 - 45°	85	45	35	38	23	17	25	-	45°	M24	30	1	0.30
5230-010-60-00	BT30 - 60°	43	23	18	16.5	11	7	12.5	-	60°	M12	13	1	0.04
5230-011-60-00	BT40 - 60°	60	35	28	23	15	10	17	-	60°	M16	19	1	0.10
5230-012-60-00	BT50 - 60°	85	45	35	38	23	17	25	-	60°	M24	30	1	0.30
5230-010-90-00	BT30 - 90°	43	23	18	16.5	11	7	12.5	-	90°	M12	13	1	0.04
5230-011-90-00	BT40 - 90°	60	35	28	23	15	10	17	-	90°	M16	19	1	0.10
5230-012-90-00	BT50 - 90°	85	45	35	38	23	17	25	-	90°	M24	30	1	0.30

### Coolant Thru

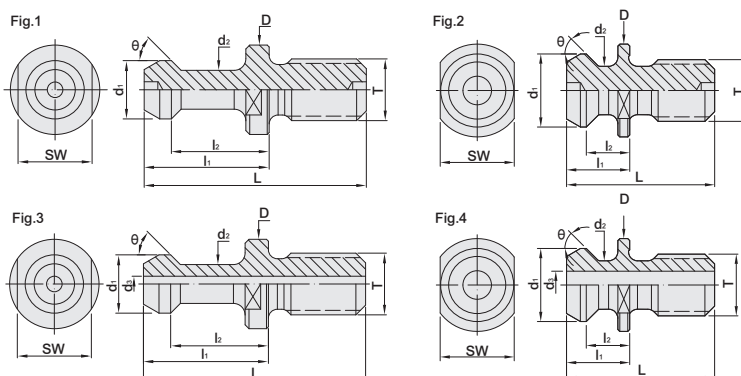
5231-010-45-00	BT30 - 45°-C	43	23	18	16.5	11	7	12.5	3	45°	M12	13	2	0.10
5231-011-15-00	BT40 - 15°-C	54	29	23	23	19	14	17	7	15°	M16	19	2	0.10
5231-011-45-00	BT40 - 45°-C	60	35	28	23	15	10	17	4	45°	M16	19	2	0.10
5231-011-45-01	BT40 - 45°-C-MAZAK	44.1	19.1	14.02	22	18.79	12.44	17	7	45°	M16	19	2	0.10
5231-012-45-00	BT50 - 45°-C	85	45	35	38	23	17	25	5	45°	M24	30	2	0.30
5231-012-45-01	BT50 - 45°-C-MAZAK	65.4	25.4	17.78	35.5	28.95	20.8	25	10	45°	M24	30	2	0.30
5231-011-60-00	BT40 - 60°-C	60	35	28	23	15	10	17	4	60°	M16	19	2	0.10
5231-012-60-00	BT50 - 60°-C	85	45	35	38	23	17	25	5	60°	M24	30	2	0.30
5231-011-90-00	BT40 - 90°-C	60	35	28	23	15	10	17	4	90°	M16	19	2	0.10
5231-012-90-00	BT50 - 90°-C	85	45	35	38	23	17	25	5	90°	M24	30	2	0.30

### Features:

- ▶ Please make sure the pull stud conforms to the machine type.

# CAT PULL STUD

## CAT 螺栓拉頭



### W/O Coolant

MODEL NO.	TYPE	L	l <sub>1</sub>	l <sub>2</sub>	D	d <sub>1</sub>	d <sub>2</sub>	d <sub>3</sub>	θ	SW	T-UNC	Fig.	WEIGHT (KGS)
5230-031-45-00	CAT40 - ANSI	1.5	0.64	0.44	0.94	0.74	0.49	-	45°	0.75	5/8"-11	2	0.09
5230-032-45-00	CAT50 - ANSI	2.3	1	0.7	1.44	1.14	0.82	-	45°	1.25	1"-8	2	0.25
5230-031-45-01	CAT40 - MAS - I	2.25	1.266	0.99	0.905	0.59	0.394	-	45°	0.748	5/8"-11	1	0.09
5230-031-60-00	CAT40 - MAS - II	2.25	1.266	0.99	0.905	0.59	0.394	-	60°	0.748	5/8"-11	1	0.09
5230-031-90-00	CAT40 - MAS - III	2.25	1.266	0.99	0.905	0.59	0.394	-	90°	0.748	5/8"-11	1	0.09
5230-032-45-01	CAT50 - MAS - I	3.346	1.772	1.378	1.496	0.906	0.669	-	45°	1.181	1"-8	1	0.25
5230-032-60-00	CAT50 - MAS - II	3.346	1.772	1.378	1.496	0.906	0.669	-	60°	1.181	1"-8	1	0.25
5230-032-90-00	CAT50 - MAS - III	3.346	1.772	1.378	1.496	0.906	0.669	-	90°	1.181	1"-8	1	0.25

### Coolant Thru

5231-031-45-00	CAT40 - ANSI - C	1.5	0.64	0.44	0.94	0.74	0.49	0.281	45°	0.75	5/8"-11	4	0.09
5231-032-45-00	CAT50 - ANSI - C	2.3	1	0.7	1.44	1.14	0.82	0.468	45°	1.25	1"-8	4	0.25
5231-031-45-01	CAT40 - Coolant - I	2.25	1.266	0.99	0.905	0.59	0.394	0.157	45°	0.748	5/8"-11	3	0.09
5231-031-60-00	CAT40 - Coolant - II	2.25	1.266	0.99	0.905	0.59	0.394	0.157	60°	0.748	5/8"-11	3	0.09
5231-031-90-00	CAT40 - Coolant - III	2.25	1.266	0.99	0.905	0.59	0.394	0.157	90°	0.748	5/8"-11	3	0.09
5231-032-45-01	CAT50 - Coolant - I	3.346	1.772	1.378	1.496	0.906	0.669	0.256	45°	1.181	1"-8	3	0.25
5231-032-60-00	CAT50 - Coolant - II	3.346	1.772	1.378	1.496	0.906	0.669	0.256	60°	1.181	1"-8	3	0.25
5231-032-90-00	CAT50 - Coolant - III	3.346	1.772	1.378	1.496	0.906	0.669	0.256	90°	1.181	1"-8	3	0.25

### Features:

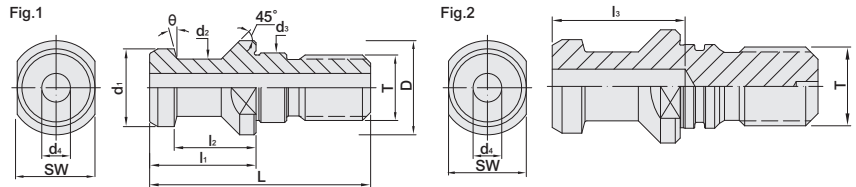
- ▶ Please make sure the pull stud conforms to the machine type.



# DAT PULL STUD

DAT 螺栓拉頭

(DIN 7388 - 3)

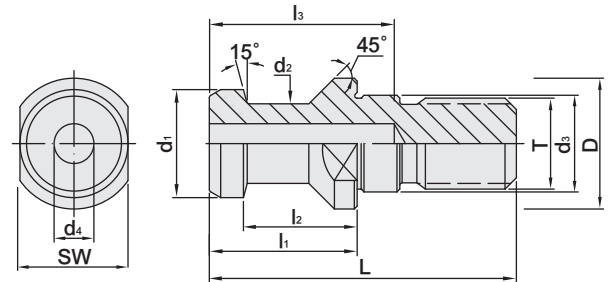


**W/O Coolant**

MODEL NO.	TYPE	L	l <sub>1</sub>	l <sub>2</sub>	l <sub>3</sub>	D	d <sub>1</sub>	d <sub>2</sub>	d <sub>3</sub>	d <sub>4</sub>	θ	SW	T	Fig.	WEIGHT (KGS)
5231-050-15-02	DAT30 - A	44	24	19	-	17	13	9	13	-	15°	14	M12	1	0.03
5230-050-15-01	DAT30 - B	44	24	19	-	17	13	9	13	-	15°	14	M12	2	0.03
5230-051-15-01	DAT40 - B	54	26	20	27	23	19	14	17	7	15°	19	M16	2	0.09
5230-052-15-01	DAT50 - B	74	34	25	37	36	28	21	25	11.5	15°	30	M24	2	0.25

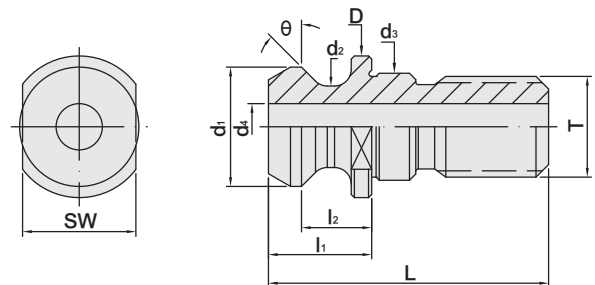
**Coolant Thru**

5231-051-15-01	DAT40 - A - C	54	26	20	-	23	19	14	17	7	15°	19	M16	1	0.09
5231-052-15-01	DAT50 - A - C	74	34	25	-	36	28	21	25	11.5	15°	30	M24	1	0.25



MODEL NO.	TYPE	L	l <sub>1</sub>	l <sub>2</sub>	l <sub>3</sub>	D	d <sub>1</sub>	d <sub>2</sub>	d <sub>3</sub>	d <sub>4</sub>	T	WEIGHT (KGS)
5230-051-15-02	DAT40	54	26	20	27	23	19	14	17	7	M16	0.09

(DIN ISO 7388 - UD)



**Coolant Thru**

MODEL NO.	TYPE	L	l <sub>1</sub>	l <sub>2</sub>	D	d <sub>1</sub>	d <sub>2</sub>	d <sub>3</sub>	d <sub>4</sub>	θ	SW	T	WEIGHT (KGS)
5231-051-15-02	DAT40 - A	54	26	20	23	19	14	17	7	15°	19	M16	0.09
5231-052-15-02	DAT50 - A	74	34	25	36	28	21	25	11.5	15°	30	M24	0.25
5231-051-45-01	DAT40 - B	44.5	16.4	11.15	22.5	18.95	12.95	17	7.35	45°	18	M16	0.03
5231-052-15-01	DAT50 - B	65.5	25.55	17.95	37	29.1	19.6	25	11.55	45°	30	M24	0.10

**Features:** ▶ Please make sure the pull stud conforms to the machine type.

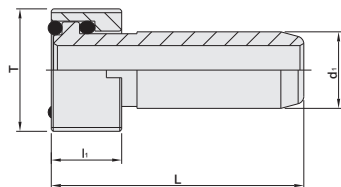




# COOLANT SUPPLY UNIT & KEY

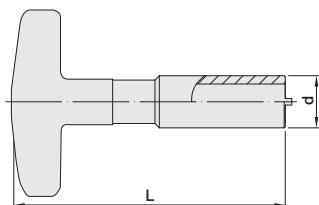
## HSK 給水管 / HSK COOLANT SUPPLY UNIT

(DIN 69895)



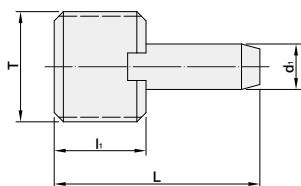
MODEL NO.	TYPE	L	l <sub>1</sub>	d <sub>1</sub>	T	WEIGHT (KGS)
5316-2050	HSK50A - CP	33	9.5	10	M16 x 1.0P	0.02
5316-2063	HSK63A - CP	36.6	11.5	12	M18 x 1.0P	0.02
5316-2100	HSK100A - CP	44	15.5	16	M24 x 1.5P	0.06

## HSK 給水管扳手 / KEY FOR HSK COOLANT SUPPLY UNIT



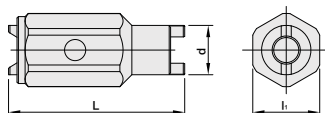
MODEL NO.	TYPE	L	d	WEIGHT (KGS)
5280-072-050	HSK50A - CPW	95	Ø15.5mm	0.14
5280-073-063	HSK63A - CPW	100	Ø17.5mm	0.16
5280-075-100	HSK100A - CPW	125	Ø23.5mm	0.32

## PSC 給水管 / PSC COOLANT SUPPLY UNIT



MODEL NO.	TYPE	L	l <sub>1</sub>	d <sub>1</sub>	T	WEIGHT (KGS)
5316-1050	PSC50	28.35	14	7	M16 x 1.5P	0.015
5316-1063	PSC63	31	15	8	M20 x 2.0P	0.027

## PSC 給水管扳手 / KEY FOR PSC COOLANT SUPPLY UNIT



MODEL NO.	TYPE	L	l <sub>1</sub>	d	WEIGHT (KGS)
5280-501-050	PSC50	50	19	14	0.071
5280-501-063	PSC63	60	25	17.5	0.16

# SPIGOT INTERCHANGEABLE DIGITAL TORQUE WRENCH

## 數顯 LCD 扭力扳手



### Two-color handle

MODEL NO.	TYPE	LENGTH	RANGE		WEIGHT (KGS)
408-006-000	DG - 135	365	10 - 135 N-m	7.4 - 99.6 ft/lbs	0.80
408-006-002	DG - 340	769	34 - 340 N-m	25 - 250.9 ft/lbs	1.40



### Steel handle

MODEL NO.	TYPE	LENGTH	RANGE		WEIGHT (KGS)
408-006-003	DG - 252	373	10 - 135 N-m	7.4 - 99.6 ft/lbs	0.80
408-006-004	DG - 253	548	20 - 200 N-m	14.8 - 147 ft/lbs	1.05
408-006-005	DG - 254	748	34 - 340 N-m	25 - 250.9 ft/lbs	1.35



### Two-color handle

MODEL NO.	TYPE	LENGTH	RANGE		WEIGHT (KGS)
408-006-006	DG - 264	373	10 - 135 N-m	7.4 - 99.6 ft/lbs	0.85
408-006-007	DG - 265	548	20 - 200 N-m	14.8 - 147 ft/lbs	1.10
408-006-008	DG - 266	748	34 - 340 N-m	25 - 250.9 ft/lbs	1.40

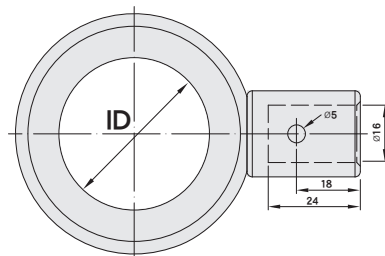


### Steel handle

MODEL NO.	TYPE	LENGTH	RANGE		WEIGHT (KGS)
408-006-009	DG - 271	373	10 - 135 N-m	7.4 - 99.6 ft/lbs	0.65
408-006-010	DG - 272	548	20 - 200 N-m	14.8 - 147 ft/lbs	0.90
408-006-011	DG - 273	748	34 - 340 N-m	25 - 250.9 ft/lbs	1.20

# NUT ADAPTERS FOR EXCHANGEABLE TORQUE WRENCH

螺帽轉接頭 [扭力扳手用]



MODEL NO.	ID	SUITABLE NUT TYPE	WEIGHT (KGS)
5284-0581-00	58	PRO25	0.42
5284-0631-00	63	PNER40, PRO32	0.58



No using adjustable spanner!



No using ER spanner with steel tube!



No using adjustable spanner with steel tube!

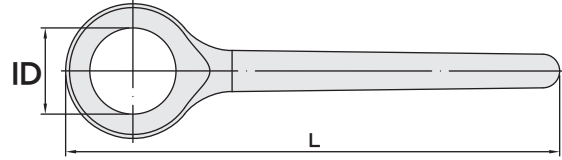
**Features:**

- ▶ Used with spigot interchangeable digital torque wrench.
- ▶ Set the torque according to recommended torque value to maintain the best cutting performance.



# BEARING SPANNER

軸承扳手



MODEL NO.	ID	L	SUITABLE NUT TYPE	WEIGHT (KGS)
5285-0581-00	58	250	PRO 25	0.70
5285-0631-00	63	250	PRO 32	0.70

**Features:**

- ▶ Used for all wind resistance nuts.



No using adjustable spanner!



No using ER spanner with steel tube!

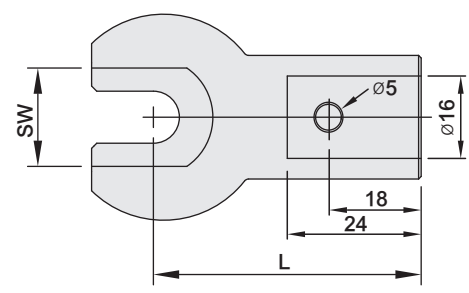


No using adjustable spanner with steel tube!



# TORQUE WRENCH ADAPTOR (FOR PULL STUD)

拉頭轉接頭 [扭力扳手用]



MODEL NO.	TYPE	SW	L	APPLICABLE PULL STUD		RECOMMENDED TIGHTENING TORQUE		WEIGHT (KGS)
5281-541-401	PSTW - 40B	19	50	BT40 SBT40 CAT40 SCAT40	45°, 60°, 90°, MAS- I MAS- II, MAS-III Coolant- I, Coolant - II Coolant - III	58 ~ 78 N-m	43 ~ 57 ft/lbs	0.23
5281-541-402	PSTW - 40BM	19	50	BT40	MAZAK	58 ~ 78 N-m	43 ~ 57 ft/lbs	0.2
5281-541-403	PSTW - 40C	19.05	50	CAT40	ANSI	58 ~ 78 N-m	43 ~ 57 ft/lbs	0.19
5281-541-404	PSTW - 40D	19	50	DAT40 SDAT40	A, B	58 ~ 78 N-m	43 ~ 57 ft/lbs	0.22
5281-541-405	PSTW - 40DB	18	50	DAT40 SDAT40	B(ISO7388/2)	58 ~ 78 N-m	43 ~ 57 ft/lbs	0.21
5281-541-501	PSTW - 50B	30	57	BT50 SBT50 CAT50 SCAT50	45°, 60°, 90° MAS- I, MAS- II MAS-III, Coolant- I Coolant - II, Coolant - III	196 ~ 245 N-m	144 ~ 180 ft/lbs	0.3
5281-541-502	PSTW - 50BM	30	57	BT50	MAZAK	196 ~ 245 N-m	144 ~ 180 ft/lbs	0.27
5281-541-503	PSTW - 50C	31.75	57	CAT50	ANSI	196 ~ 245 N-m	144 ~ 180 ft/lbs	0.26
5281-541-504	PSTW - 50D	30	57	DAT50 SDAT50	A, B	196 ~ 245 N-m	144 ~ 180 ft/lbs	0.29



No using adjustable spanner!



No using ER spanner with steel tube!



No using adjustable spanner with steel tube!

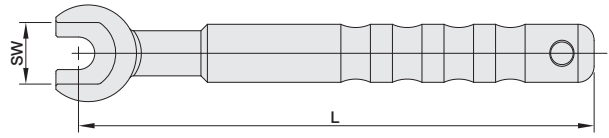
**Features:**

- ▶ Used with spigot interchangeable digital torque wrench.
- ▶ Set the torque according to recommended torque value to maintain the best cutting performance.



# SPANNER FOR PULL STUD

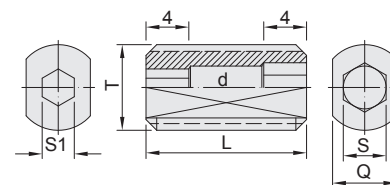
拉頭扳手



MODEL NO.	TYPE	SW	L	APPLICABLE PULL STUD		WEIGHT (KGS)
5287-540-401	PSW-40B	19	160	BT40, SBT40 CAT40, SCAT40	45°, 60°, 90°, MAS-I, MAS-II, MAS-III, Coolant-I, Coolant - II, Coolant -III	0.31
5287-540-402	PSW-40BM	19	157	BT40	MAZAK	0.29
5287-540-403	PSW-40C	19.05	160	CAT40	ANSI	0.3
5287-540-404	PSW-40D	19	160	DAT40, SDAT40	A, B	0.3
5287-540-405	PSW-40DB	18	160	DAT40, SDAT40	B(ISO7388/2)	0.3
5287-540-501	PSW-50B	30	200	BT50, SBT50 CAT50, SCAT50	45°, 60°, 90°, MAS-I, MAS- II, MAS-III, Coolant-I, Coolant - II, Coolant -III	0.75
5287-540-502	PSW-50BM	30	200	BT50	MAZAK	0.72
5287-540-503	PSW-50C	31.75	200	CAT50	ANSI	0.72
5287-540-504	PSW-50D	30	200	DAT50, SDAT50	A, B	0.74

# SCREW

## 給水型擋刀螺絲



### COOLANT PRESET SCREW



MODEL NO.	T	L	d	S	S1	Q	WEIGHT (KGS)
202-022-10050-000	M5 x 0.8P	15	2	2	2	3	0.003
202-022-10060-001	M6 x 1.0P	15	3	2.5	2.5	4	0.003
202-022-10080-002	M8 x 1.25P	15	4	4	3	6	0.005
202-022-10100-002	M10 x 1.5P	15	5	5	4	8	0.005
202-022-10120-002	M12 x 1.75P	15	6	6	5	10	0.01
202-022-10160-002	M16 x 2.0P	25	6	8	6	14	0.01
202-022-20200-003	M20 x 2.0P	25	6	10	8	18	0.03

## 給水型擋刀螺絲

### COOLANT PRESET SCREW



MODEL NO.	TYPE	WEIGHT (KGS)	MODER NO.	TYPE	WEIGHT (KGS)
202-022-10050-001	M5 x 0.8P - 20	0.002	202-022-20180-001	M18 x 1.5P - 25	0.02
202-022-10060-000	M6 x 1.0P - 15	0.003	202-022-20200-000	M20 x 2.0P - 15	0.03
202-022-10080-000	M8 x 1.25P - 15	0.005	202-022-20220-001	M22 x 1.5P - 25	0.03
202-022-10100-000	M10 x 1.5P - 15	0.005	202-022-20240-000	M24 x 2.0P - 15	0.05
202-022-10120-000	M12 x 1.75P - 15	0.01	202-022-10280-000	M28 x 2.0P - 30	0.05
202-022-10116-000	M16 x 2.0P - 15	0.01			

## 擋刀螺絲

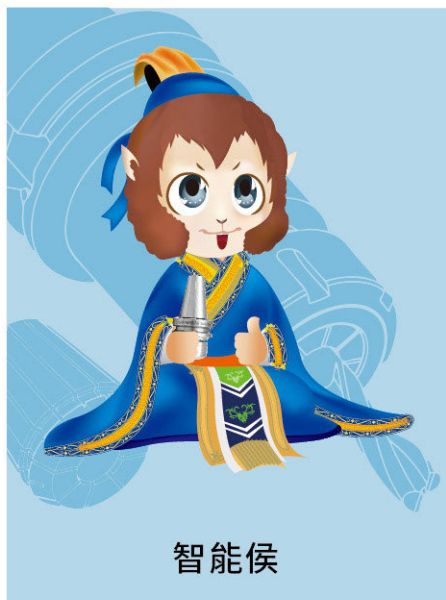
### PRESET SCREW



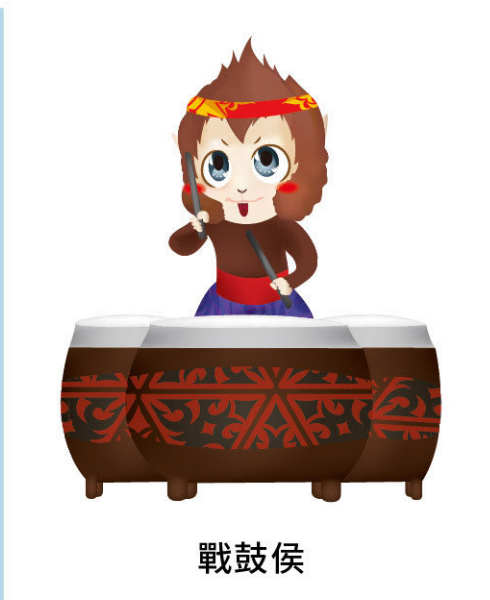
MODEL NO.	TYPE	WEIGHT (KGS)	MODER NO.	TYPE	WEIGHT (KGS)
202-006-10060-000	M6 x 1.0P - 15	0.003	202-006-10160-000	M16 x 2.0P - 15	0.03
202-006-10080-000	M8 x 1.25P - 15	0.005	202-006-20200-000	M20 x 2.0P - 15	0.03
202-006-10100-000	M10 x 1.5P - 15	0.01	202-006-20240-000	M24 x 2.0P - 15	0.05
202-006-10120-000	M12 x 1.75P - 15	0.01			







智能侯



戰鼓侯



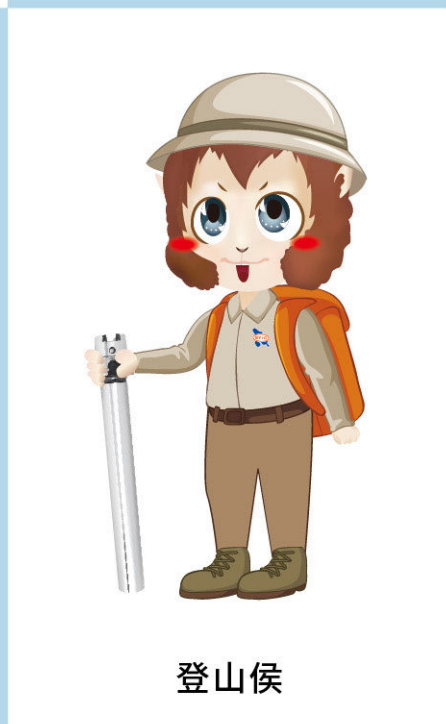
學識侯



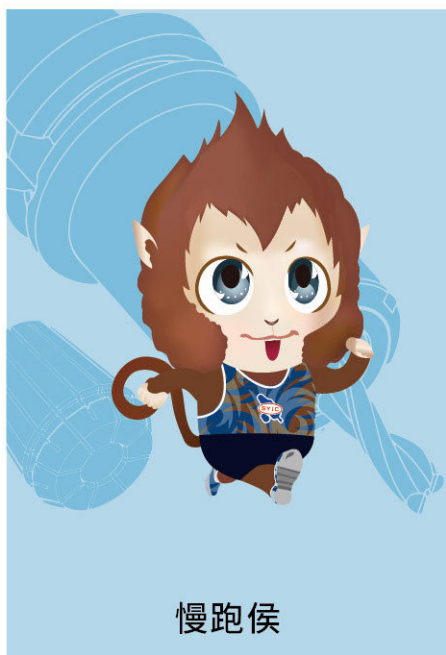
俠客侯



勝侯王



登山侯



慢跑侯



咖啡侯



鐵馬侯



[www.syic.com](http://www.syic.com)

# MEMO

Blank lined area for writing the memo content.





# MEMO

Blank lined area for writing the memo content.





SHIN-YAIN INDUSTRIAL CO., LTD.  
No.198, Jingpu Rd., Qingshui Dist., Taichung City 436, Taiwan  
Tel: +886-4-26237575 | Fax: +886-4-26237676 | E-mail: sales@syic.com

