



BRUSH SERIES

Ceramic Fiber Brush | Diamond Brush

NO.2020-02

REMOVING CUTTER MARKS

SURFACE POLISHING

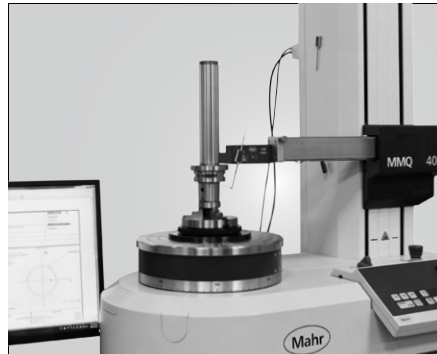
DEBURRING



www.syic.com



COMPANY INTRODUCTION





品質創造信譽 信譽保證品質

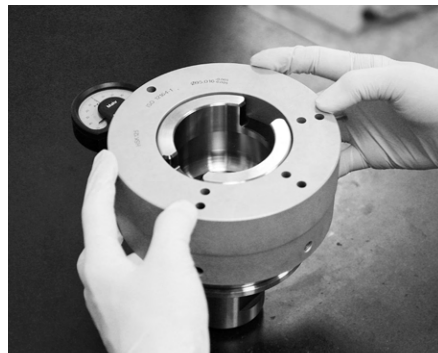
Quality creates reputation; reputation ensures quality.

About SYIC

Established in 1979, SYIC is a professional manufacturer of precise tool holders, cutting tools, angel heads, boring series and collets with more than 500 employees. The taper types of tool holders we manufacture include BT (MAS403), CAT (ANSI B5.50), DAT (DIN69871-A), HSK (DIN69893), PSC (ISO26623-1), VDI (DIN ISO10889) and straight shank holders.

SYIC is certified to ISO9001 and ISO14001. With contribution to the design, production and sale of high accuracy and inventive products, SYIC has over 300 pieces of patents worldwide. SYIC keeps investing in high-end equipment and measuring instruments from Japan and Europe to implement excellent quality control and manufacturing capability.

SYIC keeps the core value "Quality creates reputation; reputation ensures quality" to impress our customers, possessing professional technical skills to provide comprehensive solutions for customers, improving customers' machining efficiency, and enhancing the mutual competitiveness with customers. Based on the mission of "Excellent service, supreme quality," SYIC will continue to launch more high precision products to customers.



Tool Holders

Your reliable partner!

————— CNC turning, milling and grinding —————

BMT
PSC
HSK
SBT
SCAT
SDAT

**Premium
Quality**

www.syic.com

供需平衡 共榮共存

Maintain the balance of suppliers and customers and grow together.

未來之路 無限寬廣

Create a great future with infinite opportunities.

營運獲利 永續經營

Run a profitable company with sustainable development.

合作到底 共創通贏

Keep everlasting cooperation and together create a win-win situation.

成就彼此 榮耀一切

Support each other and accomplish mutual success.



Innovation is our mission!

SYIC is committed to developing high precision products to optimize the machining process and offering professional technical service. With experienced technical professionals, our products are developed in response to different types of industries. We aim to achieve customers' demands from different industries including machining industry, mold and die industry, aerospace industry, automotive industry, and energy industry. We offer the most professional and technical service, effectively resolve your machining problems to create maximum production efficiency.

CFB CERAMIC FIBER BRUSH

SBT / CFB CERAMIC FIBER BRUSH	4
SCAT / CFB CERAMIC FIBER BRUSH	5
SDAT / CFB CERAMIC FIBER BRUSH	6
HSK / CFB CERAMIC FIBER BRUSH	7-9
PSC / CFB CERAMIC FIBER BRUSH	10-11

CFB CERAMIC FIBER BRUSH



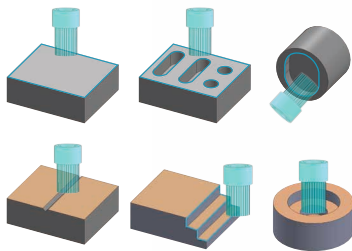
REMOVING CUTTER MARKS

SURFACE POLISHING

DEBURRING

NEW

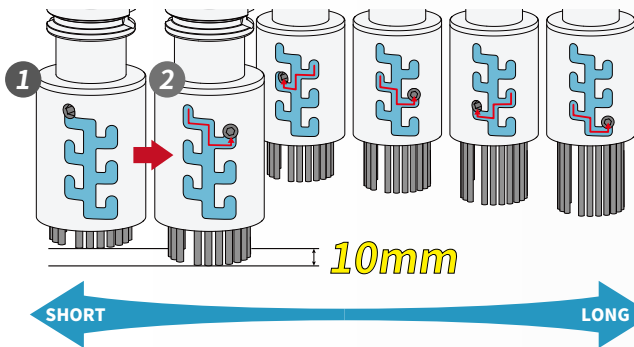
CFB is hard bristle, suitable for processing surfaces and simple - shaped workpieces .



The brush can be replaced when it is totally worn out.

Patented Design:

The brush projection length is adjustable with interval of 10mm for truing worn brush or application of stepped workpiece.



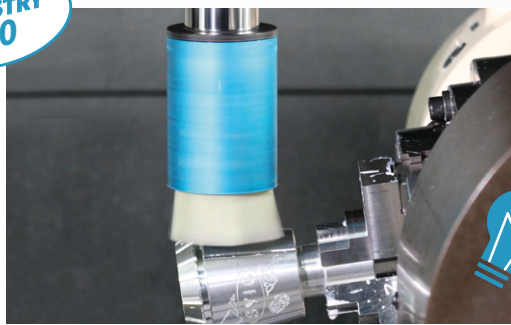
Performance:

There are 6 types of brush granularity and each CFB Ceramic Fiber Brush can be assembled according to customer demands of granularity.

	#180	#250	#400	#700	#1000	#1200	
							POLISHING
DEBURRING							

Brush Granularity

INDUSTRY 4.0



It can process the material hardness up to HRC52 and materials, e. g. aluminum, copper, metals, nickel alloy and alloy steel.



TRUING & MAINTENANCE:

Diamond Dressing Board

When the brush is worn out, please use Diamond Dressing Board to grind the used brush off.



THE BEST TOOLS TO PERFECT YOUR WORKPIECES BY AUTOMATION!

Application:

- ▶ The hard bristle is made of mixing high strength ceramic fibers and resin, ideal for processing flat surfaces or simple-shaped workpieces.
- ▶ Applicable for all steels, aluminum, copper, nickel alloy steels with hardness less than HRC52.
- ▶ High temperature withstandability : 400°C.
- ▶ Workable for both dry and wet machining, but flood coolant is recommended because coolant through center will affect processing.

Features:

- ▶ 6 types of brush granularity to choose from: #180, #250, #400, #700, #1000 and #1200. Each CFB Ceramic Fiber Brush can have one type of granularity according to customer demand.

Aggressive	Brush Granularity						Flexible
	180	250	400	700	1000	1200	
Deburring	Processing						Polishing

- ▶ When placing orders, please indicate MODEL NO., TYPE, GRANULARITY and BRUSH DIA.
- ▶ Patented design: The brush projection length is adjustable with interval of 10 mm for truing worn brushes or processing stepped workpieces.
- ▶ New brushes can be purchased separately to replace the worn ones or use the Diamond Dressing Board for truing.



How to adjust the projection length of the brush?

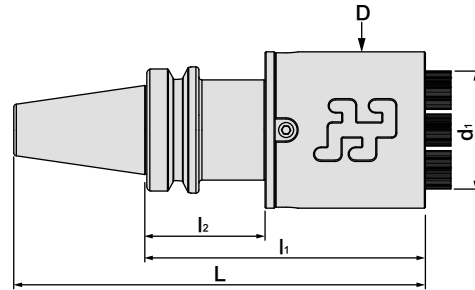
- ▶ Insert hex wrench (6mm) into the taper.
Push and turn the brush plate to meet the brush projection length you want.



SBT / CFB CERAMIC FIBER BRUSH

Dual
DRIVE+

SBT / CFB 法蘭加厚型陶瓷纖維研磨刷



PAT NO.:
TW M572282 / TW I673137
DE Nr.202018106290
JP 3219966
US 10675728

MODEL NO.	TYPE	L	l ₁	l ₂	D	d ₁	ADJUSTABLE BRUSH LENGTH	BRUSH TYPE	WEIGHT (KGS)
5025-802-040-125	SBT30 x CFB40 - 125	173.4	125	45	55	36.5	12.7 ~ 40	DB - 50	1.20
5025-802-050-125	SBT30 x CFB50 - 125	173.4	125	45	65	46	12.7 ~ 40	DB - 50	1.23
5025-802-063-125	SBT30 x CFB63 - 125	173.4	125	45	78	59	12.7 ~ 40	DB - 50	1.66
5026-802-040-120	SBT40 x CFB40 - 120	185.4	120	40	55	36.5	12.7 ~ 40	DB - 50	1.65
5026-802-050-120	SBT40 x CFB50 - 120	185.4	120	40	65	46	12.7 ~ 40	DB - 50	1.69
5026-802-063-120	SBT40 x CFB63 - 120	185.4	120	40	78	59	12.7 ~ 40	DB - 50	2.11
5026-802-063-165	SBT40 x CFB63 - 165	230.4	165	60	78	59	15 ~ 65	DB - 75	2.55
5026-802-080-120	SBT40 x CFB80 - 120	185.4	120	40	95	76	12.7 ~ 40	DB - 50	2.43
5026-802-080-165	SBT40 x CFB80 - 165	230.4	165	60	95	76	15 ~ 65	DB - 75	2.90
5026-802-100-120	SBT40 x CFB100 - 120	185.4	120	40	115	96	12.7 ~ 40	DB - 50	2.81
5026-802-100-165	SBT40 x CFB100 - 165	230.4	165	60	115	96	15 ~ 65	DB - 75	3.34
5027-802-040-125	SBT50 x CFB40 - 125	226.8	125	45	55	36.5	12.7 ~ 40	DB - 50	4.33
5027-802-050-125	SBT50 x CFB50 - 125	226.8	125	45	65	46	12.7 ~ 40	DB - 50	4.36
5027-802-063-125	SBT50 x CFB63 - 125	226.8	125	45	78	59	12.7 ~ 40	DB - 50	4.79
5027-802-063-150	SBT50 x CFB63 - 150	251.8	150	45	78	59	15 ~ 65	DB - 75	4.98
5027-802-080-125	SBT50 x CFB80 - 125	226.8	125	45	95	76	12.7 ~ 40	DB - 50	5.11
5027-802-080-150	SBT50 x CFB80 - 150	251.8	150	45	95	76	15 ~ 65	DB - 75	5.34
5027-802-100-125	SBT50 x CFB100 - 125	226.8	125	45	115	96	12.7 ~ 40	DB - 50	5.49
5027-802-100-150	SBT50 x CFB100 - 150	251.8	150	45	115	96	15 ~ 65	DB - 75	5.78


Standard Accessory: • SPANNER

Product information:

► When placing an order, please indicate MODEL NO, TYPE and GRANULARITY.

OPTIONAL ACCESSORY

► BRUSHES can be purchased separately to replace the worn ones.

CFB CERAMIC FIBER BRUSH FOR REPLACEMENT	MODEL NO.	TYPE	GRANULARITY
	5296-32-050 5296-32-075	DB - 50 DB - 75	#180
			#250
			#400
			#700
			#1000
			#1200

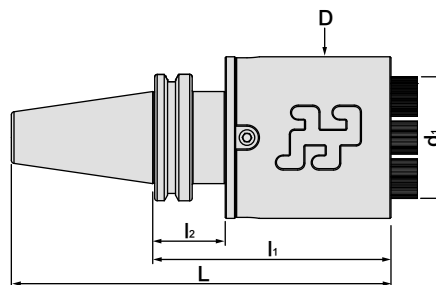
► Or use the Diamond Dressing Board for truing.

Pull Stud	DIAMOND DRESSING BOARD
 P.33-34	 P.32

SCAT / CFB CERAMIC FIBER BRUSH

Dual
DRIVE+

SCAT / CFB 法蘭加厚型陶瓷纖維研磨刷



PAT NO.:
TW M572282 / TW I673137
DE Nr.202018106290
JP 3219966
US 10675728

MODEL NO.	TYPE	inches						ADJUSTABLE BRUSH LENGTH	BRUSH TYPE	WEIGHT (KGS)
		L	l ₁	l ₂	D	d ₁				
5043-802-040-115	SCAT40 x CFB40 - 4.53"	7.21	4.53	1.378	2.17	1.44	0.5 ~ 1.57	DB - 50	1.51	
5043-802-050-115	SCAT40 x CFB50 - 4.53"	7.21	4.53	1.378	2.56	1.81	0.5 ~ 1.57	DB - 50	1.54	
5043-802-063-115	SCAT40 x CFB63 - 4.53"	7.21	4.53	1.378	3.07	2.32	0.5 ~ 1.57	DB - 50	1.96	
5043-802-063-155	SCAT40 x CFB63 - 6.10"	8.79	6.10	1.969	3.07	2.32	0.59 ~ 2.56	DB - 75	2.36	
5043-802-080-115	SCAT40 x CFB80 - 4.53"	7.21	4.53	1.378	3.74	2.99	0.5 ~ 1.57	DB - 50	2.28	
5043-802-080-155	SCAT40 x CFB80 - 6.10"	8.79	6.10	1.969	3.74	2.99	0.59 ~ 2.56	DB - 75	2.72	
5043-802-100-115	SCAT40 x CFB100 - 4.53"	7.21	4.53	1.378	4.53	3.78	0.5 ~ 1.57	DB - 50	2.66	
5043-802-100-155	SCAT40 x CFB100 - 6.10"	8.79	6.10	1.969	4.53	3.78	0.59 ~ 2.56	DB - 75	3.15	
5044-802-040-115	SCAT50 x CFB40 - 4.53"	8.53	4.53	1.378	2.17	1.44	0.5 ~ 1.57	DB - 50	3.58	
5044-802-050-115	SCAT50 x CFB50 - 4.53"	8.53	4.53	1.378	2.56	1.81	0.5 ~ 1.57	DB - 50	3.61	
5044-802-063-115	SCAT50 x CFB63 - 4.53"	8.53	4.53	1.378	3.07	2.32	0.5 ~ 1.57	DB - 50	4.04	
5044-802-063-140	SCAT50 x CFB63 - 5.51"	9.51	5.51	1.378	3.07	2.32	0.59 ~ 2.56	DB - 75	4.24	
5044-802-080-115	SCAT50 x CFB80 - 4.53"	8.53	4.53	1.378	3.74	2.99	0.5 ~ 1.57	DB - 50	4.36	
5044-802-080-140	SCAT50 x CFB80 - 5.51"	9.51	5.51	1.378	3.74	2.99	0.59 ~ 2.56	DB - 75	4.59	
5044-802-100-115	SCAT50 x CFB100 - 4.53"	8.53	4.53	1.378	4.53	3.78	0.5 ~ 1.57	DB - 50	4.74	
5044-802-100-140	SCAT50 x CFB100 - 5.51"	9.51	5.51	1.378	4.53	3.78	0.59 ~ 2.56	DB - 75	5.03	


Standard Accessory: • SPANNER

Product information:

► When placing an order, please indicate MODEL NO, TYPE and GRANULARITY.

OPTIONAL ACCESSORY

► BRUSHES can be purchased separately to replace the worn ones.

CFB CERAMIC FIBER BRUSH FOR REPLACEMENT	MODEL NO.	TYPE	GRANULARITY
	5296-32-050 5296-32-075	DB - 50 DB - 75	#180
			#250
			#400
			#700
			#1000
			#1200

► Or use the Diamond Dressing Board for truing.

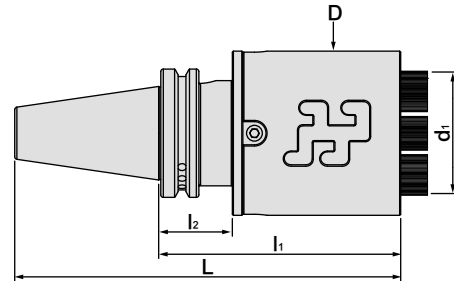
Pull Stud	DIAMOND DRESSING BOARD
 P.35	 P.32



SDAT / CFB CERAMIC FIBER BRUSH

Dual
DRIVE+

SDAT / CFB 法蘭加厚型陶瓷纖維研磨刷



PAT NO.:
TW M572282 / TW I673137
DE Nr.202018106290
JP 3219966
US 10675728

MODEL NO.	TYPE	L	l ₁	l ₂	D	d ₁	ADJUSTABLE BRUSH LENGTH	BRUSH TYPE	WEIGHT (KGS)
5066-802-040-115	SDAT40 x CFB40 - 115	183.4	115	35	55	36.5	12.7 ~ 40	DB - 50	1.55
5066-802-050-115	SDAT40 x CFB50 - 115	183.4	115	35	65	46	12.7 ~ 40	DB - 50	1.58
5066-802-063-115	SDAT40 x CFB63 - 115	183.4	115	35	78	59	12.7 ~ 40	DB - 50	2.01
5066-802-063-165	SDAT40 x CFB63 - 165	233.4	165	60	78	59	15 ~ 65	DB - 75	2.51
5066-802-080-115	SDAT40 x CFB80 - 115	183.4	115	35	95	76	12.7 ~ 40	DB - 50	2.33
5066-802-080-165	SDAT40 x CFB80 - 165	233.4	165	60	95	76	15 ~ 65	DB - 75	2.87
5066-802-100-115	SDAT40 x CFB100 - 115	183.4	115	35	115	96	12.7 ~ 40	DB - 50	2.71
5066-802-100-165	SDAT40 x CFB100 - 165	233.4	165	60	115	96	15 ~ 65	DB - 75	3.31
5067-802-040-115	SDAT50 x CFB40 - 115	216.75	115	35	55	36.5	12.7 ~ 40	DB - 50	3.67
5067-802-050-115	SDAT50 x CFB50 - 115	216.75	115	35	65	46	12.7 ~ 40	DB - 50	3.71
5067-802-063-115	SDAT50 x CFB63 - 115	216.75	115	35	78	59	12.7 ~ 40	DB - 50	4.13
5067-802-063-140	SDAT50 x CFB63 - 140	241.75	140	35	78	59	15 ~ 65	DB - 75	4.33
5067-802-080-115	SDAT50 x CFB80 - 115	216.75	115	35	95	76	12.7 ~ 40	DB - 50	4.45
5067-802-080-140	SDAT50 x CFB80 - 140	241.75	140	35	95	76	15 ~ 65	DB - 75	4.69
5067-802-100-115	SDAT50 x CFB100 - 115	216.75	115	35	115	96	12.7 ~ 40	DB - 50	4.83
5067-802-100-140	SDAT50 x CFB100 - 140	241.75	140	35	115	96	15 ~ 65	DB - 75	5.13


Standard Accessory: • SPANNER

Product information:

► When placing an order, please indicate MODEL NO, TYPE and GRANULARITY.

OPTIONAL ACCESSORY

► BRUSHES can be purchased separately to replace the worn ones.

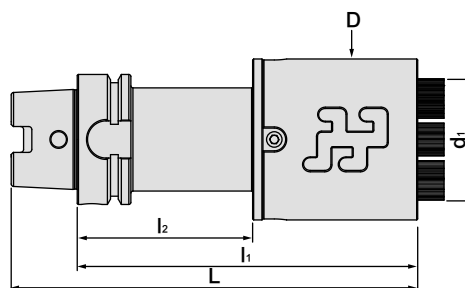
CFB CERAMIC FIBER BRUSH FOR REPLACEMENT	MODEL NO.	TYPE	GRANULARITY
	5296-32-050	DB - 50	#180
	5296-32-075	DB - 75	#250
			#400
			#700
			#1000
			#1200

► Or use the Diamond Dressing Board for truing.

Pull Stud	DIAMOND DRESSING BOARD
 P.36	 P.32

HSK / CFB CERAMIC FIBER BRUSH

HSK / CFB 陶瓷纖維研磨刷



PAT NO.:
TW M572282 / TW I673137
DE Nr.202018106290
JP 3219966
US 10675728

MODEL NO.	TYPE	L	l ₁	l ₂	D	d ₁	ADJUSTABLE BRUSH LENGTH	BRUSH TYPE	WEIGHT (KGS)
5073-802-040-165	HSK63A x CFB40 - 165	197	165	85	55	36.5	12.7 ~ 40	DB - 50	1.99
5073-802-050-165	HSK63A x CFB50 - 165	197	165	85	65	46	12.7 ~ 40	DB - 50	2.02
5073-802-063-165	HSK63A x CFB63 - 165	197	165	85	78	59	12.7 ~ 40	DB - 50	2.45
5073-802-080-165	HSK63A x CFB80 - 165	197	165	85	95	76	12.7 ~ 40	DB - 50	2.77
5073-802-100-165	HSK63A x CFB100 - 165	197	165	85	115	96	12.7 ~ 40	DB - 50	3.16
5074-802-040-170	HSK80A x CFB40 - 170	210	170	90	55	36.5	12.7 ~ 40	DB - 50	2.70
5074-802-050-170	HSK80A x CFB50 - 170	210	170	90	65	46	12.7 ~ 40	DB - 50	2.73
5074-802-063-170	HSK80A x CFB63 - 170	210	170	90	78	59	12.7 ~ 40	DB - 50	3.16
5074-802-063-225	HSK80A x CFB63 - 225	265	225	120	78	59	15 ~ 65	DB - 75	3.83
5074-802-080-170	HSK80A x CFB80 - 170	210	170	90	95	76	12.7 ~ 40	DB - 50	3.48
5074-802-080-225	HSK80A x CFB80 - 225	265	225	120	95	76	15 ~ 65	DB - 75	4.19
5074-802-100-170	HSK80A x CFB100 - 170	210	170	90	115	96	12.7 ~ 40	DB - 50	3.87
5074-802-100-225	HSK80A x CFB100 - 225	265	225	120	115	96	15 ~ 65	DB - 75	4.63
5075-802-040-175	HSK100A x CFB40 - 175	225	175	95	55	36.5	12.7 ~ 40	DB - 50	3.66
5075-802-050-175	HSK100A x CFB50 - 175	225	175	95	65	46	12.7 ~ 40	DB - 50	3.69
5075-802-063-175	HSK100A x CFB63 - 175	225	175	95	78	59	12.7 ~ 40	DB - 50	4.12
5075-802-063-225	HSK100A x CFB63 - 225	275	225	120	78	59	15 ~ 65	DB - 75	4.70
5075-802-080-175	HSK100A x CFB80 - 175	225	175	95	95	76	12.7 ~ 40	DB - 50	4.44
5075-802-080-225	HSK100A x CFB80 - 225	275	225	120	95	76	15 ~ 65	DB - 75	5.06
5075-802-100-175	HSK100A x CFB100 - 175	225	175	95	115	96	12.7 ~ 40	DB - 50	5.11
5075-802-100-225	HSK100A x CFB100 - 225	275	225	120	115	96	15 ~ 65	DB - 75	5.50


Standard Accessory: • SPANNER

Product information:

- ▶ When placing an order, please indicate MODEL NO, TYPE and GRANULARITY.

OPTIONAL ACCESSORY

- ▶ BRUSHES can be purchased separately to replace the worn ones.

CFB CERAMIC FIBER BRUSH FOR REPLACEMENT	MODEL NO.	TYPE	GRANULARITY
	5296-32-050 5296-32-075	DB - 50 DB - 75	#180
			#250
			#400
			#700
			#1000
			#1200

- ▶ Or use the Diamond Dressing Board for truing.

DIAMOND
DRESSING BOARD



P.32

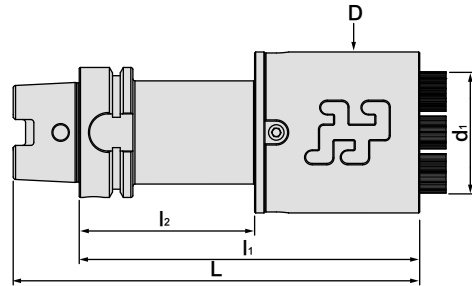


HSK / CFB CERAMIC FIBER BRUSH

HSK / CFB 陶瓷纖維研磨刷



PAT NO.:
TW M572282 / TW I673137
DE Nr.202018106290
JP 3219966
US 10675728



MODEL NO.	TYPE	L	l ₁	l ₂	D	d ₁	ADJUSTABLE BRUSH LENGTH	BRUSH TYPE	WEIGHT (KGS)
5076-802-040-180	HSK125A x CFB40 - 180	243	180	100	55	36.5	12.7 ~ 40	DB - 50	5.02
5076-802-050-180	HSK125A x CFB50 - 180	243	180	100	65	46	12.7 ~ 40	DB - 50	5.05
5076-802-063-180	HSK125A x CFB63 - 180	243	180	100	78	59	12.7 ~ 40	DB - 50	5.48
5076-802-063-230	HSK125A x CFB63 - 230	293	230	125	78	59	15 ~ 65	DB - 75	6.06
5076-802-080-180	HSK125A x CFB80 - 180	243	180	100	95	76	12.7 ~ 40	DB - 50	5.80
5076-802-080-230	HSK125A x CFB80 - 230	293	230	125	95	76	15 ~ 65	DB - 75	6.42
5076-802-100-180	HSK125A x CFB100 - 180	243	180	100	115	96	12.7 ~ 40	DB - 50	6.18
5076-802-100-230	HSK125A x CFB100 - 230	293	230	125	115	96	15 ~ 65	DB - 75	6.86


Standard Accessory: • SPANNER

Product information:

- ▶ When placing an order, please indicate MODEL NO, TYPE and GRANULARITY.

OPTIONAL ACCESSORY

- ▶ BRUSHES can be purchased separately to replace the worn ones.

CFB CERAMIC FIBER BRUSH FOR REPLACEMENT	MODEL NO.	TYPE	GRANULARITY
	5296-32-050 5296-32-075	DB - 50 DB - 75	#180
			#250
			#400
			#700
			#1000
			#1200

- ▶ Or use the Diamond Dressing Board for truing.

DIAMOND
DRESSING BOARD



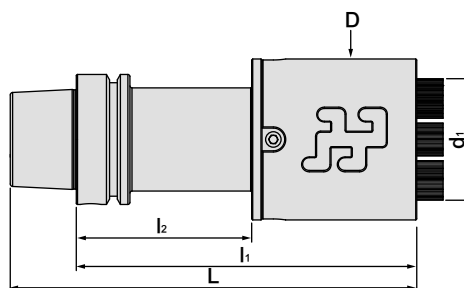
P.32

HSK / CFB CERAMIC FIBER BRUSH

HSK / CFB 陶瓷纖維研磨刷



PAT NO.:
TW M572282 / TW I673137
DE Nr.202018106290
JP 3219966
US 10675728



MODEL NO.	TYPE	L	l ₁	l ₂	D	d ₁	ADJUSTABLE BRUSH LENGTH	BRUSH TYPE	WEIGHT (KGS)
5101-802-040-165	HSK63E x CFB40 - 165	197	165	85	55	36.5	12.7 ~ 40	DB - 50	1.99
5101-802-050-165	HSK63E x CFB50 - 165	197	165	85	65	46	12.7 ~ 40	DB - 50	2.02
5101-802-063-165	HSK63E x CFB63 - 165	197	165	85	78	59	12.7 ~ 40	DB - 50	2.45
5101-802-080-165	HSK63E x CFB80 - 165	197	165	85	95	76	12.7 ~ 40	DB - 50	2.77
5101-802-100-165	HSK63E x CFB100 - 165	197	165	85	115	96	12.7 ~ 40	DB - 50	3.16
5107-802-040-170	HSK80E x CFB40 - 170	210	170	90	55	36.5	12.7 ~ 40	DB - 50	2.70
5107-802-050-170	HSK80E x CFB50 - 170	210	170	90	65	46	12.7 ~ 40	DB - 50	2.73
5107-802-063-170	HSK80E x CFB63 - 170	210	170	90	78	59	12.7 ~ 40	DB - 50	3.16
5107-802-063-225	HSK80E x CFB63 - 225	265	225	120	78	59	15 ~ 65	DB - 75	3.83
5107-802-080-170	HSK80E x CFB80 - 170	210	170	90	95	76	12.7 ~ 40	DB - 50	3.48
5107-802-080-225	HSK80E x CFB80 - 225	265	225	120	95	76	15 ~ 65	DB - 75	4.19
5107-802-100-170	HSK80E x CFB100 - 170	210	170	90	115	96	12.7 ~ 40	DB - 50	3.87
5107-802-100-225	HSK80E x CFB100 - 225	265	225	120	115	96	15 ~ 65	DB - 75	4.63
5108-802-040-175	HSK100E x CFB40 - 175	225	175	95	55	36.5	12.7 ~ 40	DB - 50	3.66
5108-802-050-175	HSK100E x CFB50 - 175	225	175	95	65	46	12.7 ~ 40	DB - 50	3.69
5108-802-063-175	HSK100E x CFB63 - 175	225	175	95	78	59	12.7 ~ 40	DB - 50	4.12
5108-802-063-225	HSK100E x CFB63 - 225	275	225	120	78	59	15 ~ 65	DB - 75	4.70
5108-802-080-175	HSK100E x CFB80 - 175	225	175	95	95	76	12.7 ~ 40	DB - 50	4.44
5108-802-080-225	HSK100E x CFB80 - 225	275	225	120	95	76	15 ~ 65	DB - 75	5.06
5108-802-100-175	HSK100E x CFB100 - 175	225	175	95	115	96	12.7 ~ 40	DB - 50	5.11
5108-802-100-225	HSK100E x CFB100 - 225	275	225	120	115	96	15 ~ 65	DB - 75	5.50


Standard Accessory: • SPANNER

Product information:

► When placing an order, please indicate MODEL NO, TYPE and GRANULARITY.

OPTIONAL ACCESSORY

► BRUSHES can be purchased separately to replace the worn ones.

CFB CERAMIC FIBER BRUSH FOR REPLACEMENT	MODEL NO.	TYPE	GRANULARITY
	5296-32-050 5296-32-075	DB - 50 DB - 75	#180
			#250
			#400
			#700
			#1000
			#1200

► Or use the Diamond Dressing Board for truing.

DIAMOND
DRESSING BOARD

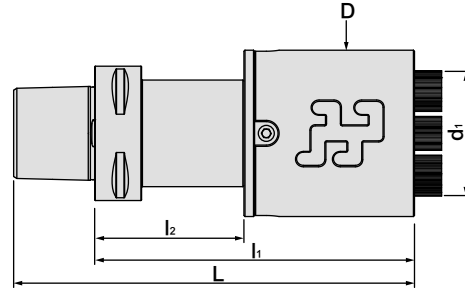


P.32



PSC / CFB CERAMIC FIBER BRUSH

PSC / CFB 陶瓷纖維研磨刷



PAT NO.:
TW M572282 / TW I673137
DE Nr.202018106290
JP 3219966
US 10675728

MODEL NO.	TYPE	L	l ₁	l ₂	D	d ₁	ADJUSTABLE BRUSH LENGTH	BRUSH TYPE	WEIGHT (KGS)
5141-802-040-150	PSC40 x CFB40 - 150	174	150	70	55	36.5	12.7 ~ 40	DB - 50	1.46
5141-802-050-150	PSC40 x CFB50 - 150	174	150	70	65	46	12.7 ~ 40	DB - 50	1.49
5141-802-063-150	PSC40 x CFB63 - 150	174	150	70	78	59	12.7 ~ 40	DB - 50	1.92
5141-802-080-150	PSC40 x CFB80 - 150	174	150	70	95	76	12.7 ~ 40	DB - 50	2.24
5141-802-100-150	PSC40 x CFB100 - 150	174	150	70	115	96	12.7 ~ 40	DB - 50	2.62
5142-802-040-150	PSC50 x CFB40 - 150	180	150	70	55	36.5	12.7 ~ 40	DB - 50	1.65
5142-802-050-150	PSC50 x CFB50 - 150	180	150	70	65	46	12.7 ~ 40	DB - 50	1.68
5142-802-063-150	PSC50 x CFB63 - 150	180	150	70	78	59	12.7 ~ 40	DB - 50	2.11
5142-802-080-150	PSC50 x CFB80 - 150	180	150	70	95	76	12.7 ~ 40	DB - 50	2.43
5142-802-100-150	PSC50 x CFB100 - 150	180	150	70	115	96	12.7 ~ 40	DB - 50	2.80
5143-802-040-150	PSC63 x CFB40 - 150	188	150	70	55	36.5	12.7 ~ 40	DB - 50	1.95
5143-802-050-150	PSC63 x CFB50 - 150	188	150	70	65	46	12.7 ~ 40	DB - 50	1.98
5143-802-063-150	PSC63 x CFB63 - 150	188	150	70	78	59	12.7 ~ 40	DB - 50	2.41
5143-802-063-205	PSC63 x CFB63 - 205	243	205	100	78	59	15 ~ 65	DB - 75	2.98
5143-802-080-150	PSC63 x CFB80 - 150	188	150	70	95	76	12.7 ~ 40	DB - 50	2.73
5143-802-080-205	PSC63 x CFB80 - 205	243	205	100	95	76	15 ~ 65	DB - 75	3.34
5143-802-100-150	PSC63 x CFB100 - 150	188	150	70	115	96	12.7 ~ 40	DB - 50	3.11
5143-802-100-205	PSC63 x CFB100 - 205	243	205	100	115	96	15 ~ 65	DB - 75	3.78


Standard Accessory: • SPANNER

Product information:

► When placing an order, please indicate MODEL NO, TYPE and GRANULARITY.

OPTIONAL ACCESSORY

► BRUSHES can be purchased separately to replace the worn ones.

CFB CERAMIC FIBER BRUSH FOR REPLACEMENT	MODEL NO.	TYPE	GRANULARITY
	5296-32-050 5296-32-075	DB - 50 DB - 75	#180
			#250
			#400
			#700
			#1000
			#1200

► Or use the Diamond Dressing Board for truing.

DIAMOND DRESSING BOARD



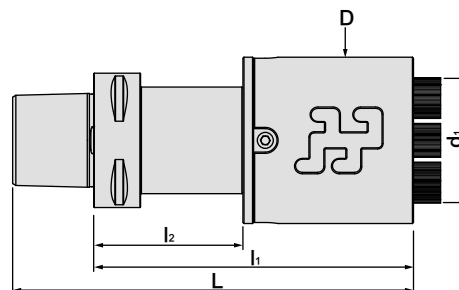
P.32

PSC / CFB CERAMIC FIBER BRUSH

PSC / CFB 陶瓷纖維研磨刷



PAT NO.:
TW M572282 / TW I673137
DE Nr.202018106290
JP 3219966
US 10675728



MODEL NO.	TYPE	L	l ₁	l ₂	D	d ₁	ADJUSTABLE BRUSH LENGTH	BRUSH TYPE	WEIGHT (KGS)
5144-802-040-145	PSC80 x CFB40 - 145	193	145	65	55	36.5	12.7 ~ 40	DB - 50	2.84
5144-802-050-145	PSC80 x CFB50 - 145	193	145	65	65	46	12.7 ~ 40	DB - 50	2.88
5144-802-063-145	PSC80 x CFB63 - 145	193	145	65	78	59	12.7 ~ 40	DB - 50	3.30
5144-802-063-195	PSC80 x CFB63 - 195	243	195	90	78	59	15 ~ 65	DB - 75	3.89
5144-802-080-145	PSC80 x CFB80 - 145	193	145	65	95	76	12.7 ~ 40	DB - 50	3.62
5144-802-080-195	PSC80 x CFB80 - 195	243	195	90	95	76	15 ~ 65	DB - 75	4.25
5144-802-100-145	PSC80 x CFB100 - 145	193	145	65	115	96	12.7 ~ 40	DB - 50	4.00
5144-802-100-195	PSC80 x CFB100 - 195	243	195	90	115	96	15 ~ 65	DB - 75	4.69
5145-802-040-145	PSC80X x CFB40 - 145	193	145	65	55	36.5	12.7 ~ 40	DB - 50	3.56
5145-802-050-145	PSC80X x CFB50 - 145	193	145	65	65	46	12.7 ~ 40	DB - 50	3.59
5145-802-063-145	PSC80X x CFB63 - 145	193	145	65	78	59	12.7 ~ 40	DB - 50	4.02
5145-802-063-195	PSC80X x CFB63 - 195	243	195	90	78	59	15 ~ 65	DB - 75	4.61
5145-802-080-145	PSC80X x CFB80 - 145	193	145	65	95	76	12.7 ~ 40	DB - 50	4.34
5145-802-080-195	PSC80X x CFB80 - 195	243	195	90	95	76	15 ~ 65	DB - 75	4.96
5145-802-100-145	PSC80X x CFB100 - 145	193	145	65	115	96	12.7 ~ 40	DB - 50	4.72
5145-802-100-195	PSC80X x CFB100 - 195	243	195	90	115	96	15 ~ 65	DB - 75	5.40


Standard Accessory: • SPANNER

Product information:

► When placing an order, please indicate MODEL NO, TYPE and GRANULARITY.

OPTIONAL ACCESSORY

► BRUSHES can be purchased separately to replace the worn ones.

CFB CERAMIC FIBER BRUSH FOR REPLACEMENT	MODEL NO.	TYPE	GRANULARITY
	5296-32-050 5296-32-075	DB - 50 DB - 75	#180
			#250
			#400
			#700
			#1000
			#1200

► Or use the Diamond Dressing Board for truing.

DIAMOND DRESSING BOARD



P.32



MEMO

Blank lined area for writing the memo content.



DMB

DIAMOND BRUSH

DMB DIAMOND BRUSH

16

FMB

MILL ARBOR

<u>BT x FMB</u>	<u>17-19</u>
<u>CAT x FMB</u>	<u>20</u>
<u>DAT x FMB</u>	<u>21</u>
<u>SBT x FMB</u>	<u>22-24</u>
<u>SCAT X FMB</u>	<u>25</u>
<u>SDAT x FMB</u>	<u>26</u>
<u>HSK x FMB</u>	<u>27-28</u>
<u>PSC x FMB</u>	<u>29</u>

THE BEST TOOLS TO PERFECT YOUR WORKPIECES BY AUTOMATION!

Application:

- ▶ Ideal for removing cutter marks, surface polishing and deburring.
- ▶ Workpiece material: Aluminum, copper, steel, nickel alloys, alloys, cemented carbide, hard materials, steels after heat treatment, glass, ceramics, quartz, etc.
- ▶ The bristle has high flexibility, ideal for processing workpieces with flat or curved surfaces, splits, slots or complicated shapes.
- ▶ Suitable for flood coolant.
- ▶ Compatible with standard FMB face mill arbors.

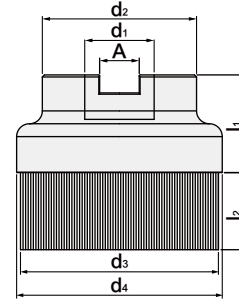
Features:

- ▶ The high toughness bristle is made by mixing synthetic polymer and diamond powders, not easy to break.
- ▶ Capable of processing the workpiece hardness up to HRC60.
- ▶ The heat-resistant temperature is within 180°C.
- ▶ Different granularities and brush diameters are available to choose from. Each DMB Diamond Brush can have one type of granularity according to customer demand.
- ▶ When placing orders, please indicate MODEL NO., TYPE and GRANULARITY.
- ▶ If the bristle is worn or damaged unevenly after use, utilize Diamond Dressing Board for truing. The brush can be used continuously.



DMB DIAMOND BRUSH

DMB 鑽石研磨刷



MODEL NO.	TYPE	d ₁	d ₂	d ₃	d ₄	l ₁	l ₂	A
5330-099-022	DMB50 - 22	22	50	47	50	30	30	10.4
5330-099-122	DMB50 - 25.4	25.4	50	47	50	30	30	9.5
5330-099-023	DMB63 - 22	22	48	60	63	30	30	10.4
5330-099-123	DMB63 - 25.4	25.4	50	60	63	30	30	9.5
5330-099-034	DMB80 - 27	27	60	77	80	38	30	12.4
5330-099-134	DMB80 - 31.75	31.75	60	77	80	38	30	12.7
5330-099-045	DMB100 - 32	32	80	97	100	40	30	14.4
5330-099-135	DMB100 - 31.75	31.75	80	97	100	40	30	12.7
5330-099-056	DMB125-40	40	125	89	125	50	30	16.4

GRANULARITY

#8000

#3000

#2000

#1000

#800

#600

#400

#200



#100

#80

Product information:

- ▶ If you require different granularity, please contact our sales team for the information of availability.
- ▶ When placing an order, please indicate MODEL NO, TYPE and GRANULARITY.

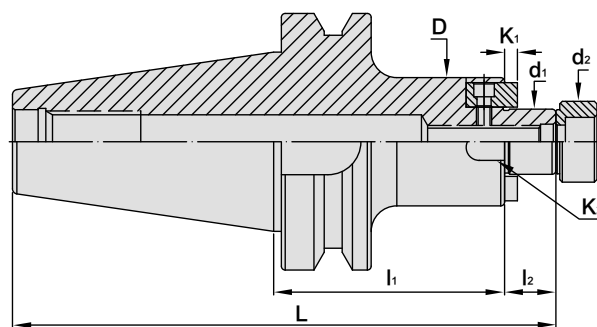
OPTIONAL ACCESSORY

Diamond Dressing Board	Face Mill Arbor
	
P.32	P.18~29

BT FACE MILL ARBOR

FMB TYPE

BT / FMB 平面銑刀桿



METRIC

MODEL NO.	TYPE	L	l ₁	l ₂	D	d ₁	d ₂	K ₁	K ₂	WEIGHT (KGS)
5010-153-022-045	BT30 x FMB22 - 45	112.4	45	19	48	22	26	5	10	0.82
5010-153-022-060	BT30 x FMB22 - 60	127.4	60	19	48	22	26	5	10	1.02
5010-153-027-045	BT30 x FMB27 - 45	113.4	45	20	60	27	31.5	5	12	1.06
5010-153-027-060	BT30 x FMB27 - 60	128.4	60	20	60	27	31.5	5	12	1.34
5010-153-032-045	BT30 x FMB32 - 45	115.4	45	22	78	32	41	7	14	1.46
5011-153-022-045	BT40 x FMB22 - 45	129.4	45	19	48	22	26	5	10	1.34
5011-153-022-060	BT40 x FMB22 - 60	144.4	60	19	48	22	26	5	10	1.54
5011-153-022-100	BT40 x FMB22 - 100	184.4	100	19	48	22	26	5	10	2.08
5011-153-027-045	BT40 x FMB27 - 45	130.4	45	20	60	27	31.5	5	12	1.56
5011-153-027-060	BT40 x FMB27 - 60	145.4	60	20	60	27	31.5	5	12	1.88
5011-153-027-090	BT40 x FMB27 - 90	175.4	90	20	60	27	31.5	5	12	2.30
5011-153-027-105	BT40 x FMB27 - 105	190.4	105	20	60	27	31.5	5	12	2.08
5011-153-032-045	BT40 x FMB32 - 45	132.4	45	22	78	32	41	7	14	1.96
5011-153-032-060	BT40 x FMB32 - 60	147.4	60	22	78	32	41	7	14	2.34

Features:

- Tolerance of d1 the connection part with Diamond Brush:h6.

Pull Stud



P.33~34



BT FACE MILL ARBOR

FMB TYPE

BT / FMB 平面銑刀桿



Fig.1

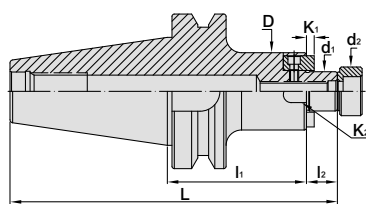
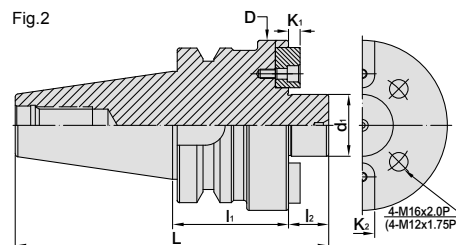


Fig.2



METRIC

MODEL NO.	TYPE	L	l ₁	l ₂	D	d ₁	d ₂	K ₁	K ₂	Fig	WEIGHT (KGS)
5012-153-022-045	BT50 x FMB22 - 45	165.8	45	19	48	22	26	4.8	10	1	4.10
5012-153-022-090	BT50 x FMB22 - 90	210.8	90	19	48	22	26	5	10	1	4.80
5012-153-022-150	BT50 x FMB22 - 150	270.8	150	19	48	22	26	5	10	1	6.80
5012-153-022-200	BT50 x FMB22 - 200	320.8	200	19	48	22	26	5	10	1	7.00
5012-153-022-250	BT50 x FMB22 - 250	370.8	250	19	48	22	26	5	10	1	8.00
5012-153-027-050	BT50 x FMB27 - 50	171.8	50	20	60	27	31.5	5.8	12	1	4.30
5012-153-027-090	BT50 x FMB27 - 90	211.8	90	20	60	27	31.5	5	12	1	5.40
5012-153-027-150	BT50 x FMB27 - 150	271.8	150	20	60	27	31.5	5	12	1	6.50
5012-153-027-200	BT50 x FMB27 - 200	321.8	200	20	60	27	31.5	5	12	1	9.50
5012-153-027-250	BT50 x FMB27 - 250	371.8	250	20	60	27	31.5	5	12	1	11.0
5012-153-032-050	BT50 x FMB32 - 50	173.8	50	22	78	32	41	6.8	14	1	4.60
5012-153-032-090	BT50 x FMB32 - 90	213.8	90	22	78	32	41	7	14	1	5.80

Features:

- Tolerance of d₁ the connection part with Diamond Brush:h6.

Pull Stud

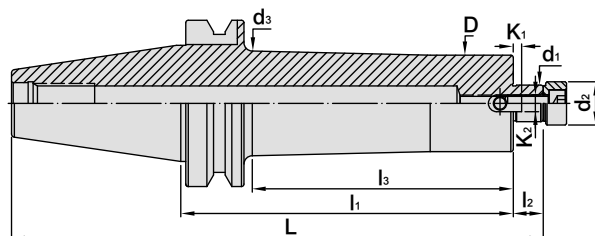


P.33~34

BT FACE MILL ARBOR

EXTENSION TYPE

BT / FMB平面銑刀桿[加長斜度柄]



METRIC

MODEL NO.	TYPE	L	l ₁	l ₂	l ₃	D	d ₁	d ₂	d ₃	K ₁	K ₂	WEIGHT (KGS)
5011-154-022-150	BT40 x FMB22 - 150BG	234.4	150	19	118	48	22	26	51	5	10	2.90
5011-154-022-200	BT40 x FMB22 - 200BG	284.4	200	19	168	48	22	26	51	5	10	3.60
5011-154-022-250	BT40 x FMB22 - 250BG	334.4	250	19	218	48	22	26	51	5	10	4.40
5012-154-022-150	BT50 x FMB22 - 150BG	270.8	150	19	107	58	22	26	62.5	5	10	6.80
5012-154-022-200	BT50 x FMB22 - 200BG	320.8	200	19	157	58	22	26	62.5	5	10	8.40
5012-154-022-250	BT50 x FMB22 - 250BG	370.8	250	19	207	58	22	26	62.5	5	10	9.40
5012-154-022-300	BT50 x FMB22 - 300BG	420.8	300	19	257	58	22	26	62.5	5	10	10.4
5012-154-022-350	BT50 x FMB22 - 350BG	470.8	350	19	307	58	22	26	62.5	5	10	11.4
5012-154-022-400	BT50 x FMB22 - 400BG	520.8	400	19	352	58	22	26	62.5	5	10	12.4
5012-154-022-450	BT50 x FMB22 - 450BG	570.8	450	19	402	58	22	26	62.5	5	10	13.4
5012-154-022-500	BT50 x FMB22 - 500BG	620.8	500	19	452	58	22	26	62.5	5	10	14.4
5012-154-027-150	BT50 x FMB27 - 150BG	271.8	150	20	107	60	27	31.5	78	5	12	6.90
5012-154-027-200	BT50 x FMB27 - 200BG	321.8	200	20	157	60	27	31.5	78	5	12	8.50
5012-154-027-250	BT50 x FMB27 - 250BG	371.8	250	20	207	60	27	31.5	78	5	12	9.50
5012-154-027-300	BT50 x FMB27 - 300BG	421.8	300	20	257	60	27	31.5	78	5	12	10.4
5012-154-027-350	BT50 x FMB27 - 350BG	471.8	350	20	307	60	27	31.5	78	5	12	11.4
5012-154-027-400	BT50 x FMB27 - 400BG	521.8	400	20	352	60	27	31.5	78	5	12	12.4
5012-154-027-450	BT50 x FMB27 - 450BG	571.8	450	20	402	60	27	31.5	78	5	12	13.4
5012-154-027-500	BT50 x FMB27 - 500BG	621.8	500	20	452	60	27	31.5	78	5	12	14.4
5012-154-032-150	BT50 x FMB32 - 150BG	273.8	150	22	107	78	32	41	85	7	14	7.00
5012-154-032-200	BT50 x FMB32 - 200BG	323.8	200	22	157	78	32	41	85	7	14	8.50
5012-154-032-250	BT50 x FMB32 - 250BG	373.8	250	22	207	78	32	41	85	7	14	9.50
5012-154-032-300	BT50 x FMB32 - 300BG	423.8	300	22	257	78	32	41	85	7	14	10.5
5012-154-032-350	BT50 x FMB32 - 350BG	473.8	350	22	307	78	32	41	85	7	14	11.5
5012-154-032-400	BT50 x FMB32 - 400BG	523.8	400	22	357	78	32	41	85	7	14	12.5
5012-154-032-450	BT50 x FMB32 - 450BG	573.8	450	22	407	78	32	41	85	7	14	13.5
5012-154-032-500	BT50 x FMB32 - 500BG	623.8	500	22	460	80	32	41	96	7	14	14.5

Features:

- ▶ Tolerance of d1 the connection part with Diamond Brush:h6.

Pull Stud

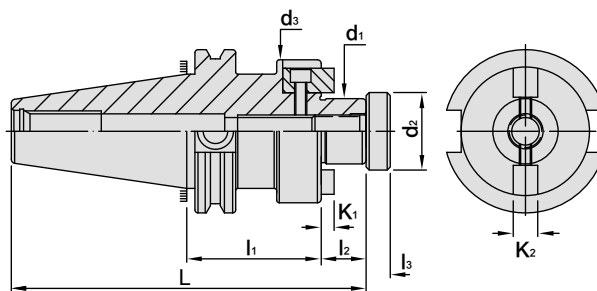


P.33~34



CAT FACE MILL ARBOR

CAT / FMA 平面銑刀桿



INCHES

MODEL NO.	TYPE	L	l ₁	l ₂	d ₁	d ₂	d ₃	K ₁	K ₂	WEIGHT (KGS)
5031-151-A64-206	CAT40 x FMA1" - 2.06"	5.434	2.06	0.687	1	1.1875	2.19	0.188	0.375	1.45
5031-151-A64-400	CAT40 x FMA1" - 4"	7.374	4	0.687	1	1.1875	2.19	0.188	0.375	2.00
5031-151-A64-600	CAT40 x FMA1" - 6"	9.374	6	0.687	1	1.1875	2.19	0.188	0.375	2.75
5031-151-A72-221	CAT40 x FMA1-1/4" - 2.21"	5.584	2.21	0.687	1.25	1.5	2.75	0.25	0.5	2.60
5031-151-A72-400	CAT40 x FMA1-1/4" - 4"	7.374	4	0.687	1.25	1.5	2.75	0.25	0.5	2.75
5031-151-A72-600	CAT40 x FMA1-1/4" - 6"	9.374	6	0.687	1.25	1.5	2.75	0.25	0.5	2.95

Features:

- Tolerance of d₁ the connection part with Diamond Brush:h6.

Pull Stud

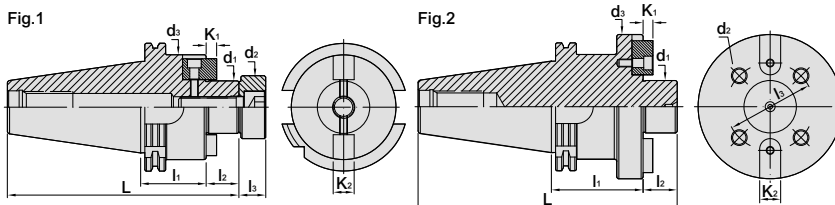


P.35

DAT FACE MILL ARBOR

FMB TYPE

DAT / FMB 平面銑刀桿



METRIC

MODEL NO.	TYPE	L	l ₁	l ₂	l ₃	d ₁	d ₂	d ₃	K ₁	K ₂	Fig	WEIGHT (KGS)
5050-153-022-035	DAT30 x FMB22 - 35	101.8	35	19	14	22	26	45	5	10	1	1.00
5050-153-027-055	DAT30 x FMB27 - 55	122.8	55	20	16	27	31.5	58	5	12	1	1.05
5051-153-022-035	DAT40 x FMB22 - 35	122.4	35	19	14	22	26	48	5	10	1	1.20
5051-153-027-060	DAT40 x FMB27 - 60	148.4	60	20	16	27	31.5	58	5	12	1	1.80
5051-153-032-060	DAT40 x FMB32 - 60	150.4	60	22	16	32	41	66	6	14	1	2.00
5052-153-022-035	DAT50 x FMB22 - 35	155.75	35	19	14	22	26	48	5	10	1	3.40
5052-153-027-035	DAT50 x FMB27 - 35	156.75	35	20	16	27	31.5	60	5	12	1	3.50
5052-153-032-035	DAT50 x FMB32 - 35	158.75	35	22	16	32	41	66	6	14	1	3.70

Features:

- Tolerance of d1 the connection part with Diamond Brush:h6.

Pull Stud



P.36

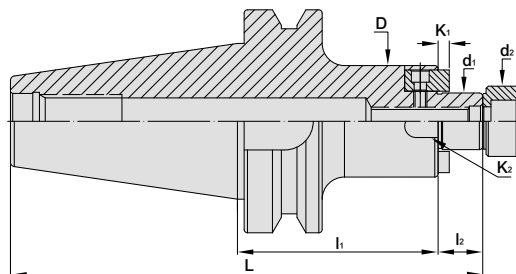


SBT FACE MILL ARBOR

FMB TYPE

Dual
DRIVE+

SBT / FMB 法蘭加厚型平面銑刀桿



METRIC

MODEL NO.	TYPE	L	l ₁	l ₂	D	d ₁	d ₂	K ₁	K ₂	WEIGHT (KGS)
5025-153-022-045	SBT30 x FMB22 - 45	112.4	45	19	48	22	26	5	10	0.85
5025-153-022-060	SBT30 x FMB22 - 60	127.4	60	19	48	22	26	5	10	1.02
5025-153-027-045	SBT30 x FMB27 - 45	113.4	45	20	60	27	31.5	5	12	1.06
5025-153-027-060	SBT30 x FMB27 - 60	128.4	60	20	60	27	31.5	5	12	1.35
5025-153-032-045	SBT30 x FMB32 - 45	115.4	45	22	78	32	41	7	14	1.35
5026-153-022-045	SBT40 x FMB22 - 45	129.4	45	19	48	22	26	5	10	1.45
5026-153-022-060	SBT40 x FMB22 - 60	144.4	60	19	48	22	26	5	10	1.54
5026-153-022-100	SBT40 x FMB22 - 100	184.4	100	19	48	22	26	5	10	2.10
5026-153-027-045	SBT40 x FMB27 - 45	130.4	45	20	60	27	31.5	5	12	1.60
5026-153-027-060	SBT40 x FMB27 - 60	145.4	60	20	60	27	31.5	5	12	2.00
5026-153-027-090	SBT40 x FMB27 - 90	175.4	90	20	60	27	31.5	5	12	2.30
5026-153-027-105	SBT40 x FMB27 - 105	190.4	105	20	60	27	31.5	5	12	2.10
5026-153-032-045	SBT40 x FMB32 - 45	132.4	45	22	78	32	41	7	14	2.00
5026-153-032-060	SBT40 x FMB32 - 60	147.4	60	22	78	32	41	7	14	2.35

Features:

- Tolerance of d₁ the connection part with Diamond Brush:h6.

Pull Stud



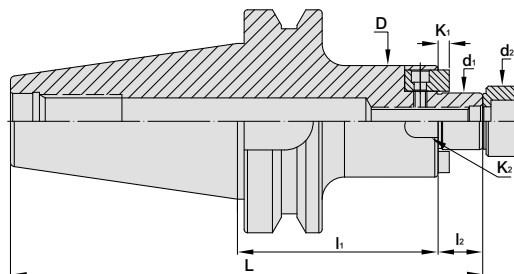
P.33~34

SBT FACE MILL ARBOR

FMB TYPE

Dual
DRIVE+

SBT / FMB 法蘭加厚型平面銑刀桿



METRIC

MODEL NO.	TYPE	L	l ₁	l ₂	D	d ₁	d ₂	K ₁	K ₂	WEIGHT (KGS)
5027-153-022-045	SBT50 x FMB22 - 45	165.8	45	19	48	22	26	4.8	10	4.75
5027-153-022-090	SBT50 x FMB22 - 90	210.8	90	19	48	22	26	5	10	5.10
5027-153-022-150	SBT50 x FMB22 - 150	270.8	150	19	48	22	26	5	10	6.80
5027-153-027-050	SBT50 x FMB27 - 50	171.8	50	20	60	27	31.5	5.8	12	4.30
5027-153-027-090	SBT50 x FMB27 - 90	211.8	90	20	60	27	31.5	5	12	5.40
5027-153-027-150	SBT50 x FMB27 - 150	271.8	150	20	60	27	31.5	5	12	6.50
5027-153-027-200	SBT50 x FMB27 - 200	321.8	200	20	60	27	31.5	5	12	7.50
5027-153-027-250	SBT50 x FMB27 - 250	371.8	250	20	60	27	31.5	5	12	8.50
5027-153-032-050	SBT50 x FMB32 - 50	173.8	50	22	78	32	41	6.8	14	4.60
5027-153-032-090	SBT50 x FMB32 - 90	213.8	90	22	78	32	41	7	14	5.80

Features:

- Tolerance of d1 the connection part with Diamond Brush:h6.

Pull Stud



P.33~34

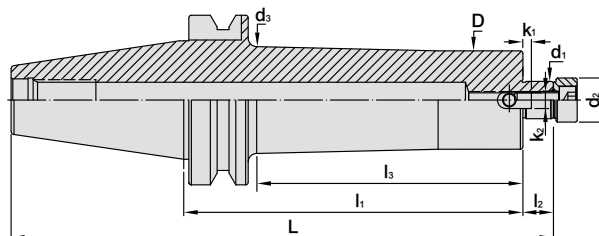


SBT FACE MILL ARBOR

EXTENSION TYPE

Dual
DRIVE+

SBT / FMB 法蘭加厚型平面銑刀桿[加長斜度柄]



METRIC

MODEL NO.	TYPE	L	l ₁	l ₂	l ₃	D	d ₁	d ₂	d ₃	K ₁	K ₂	WEIGHT (KGS)
5026-154-022-150	SBT40 x FMB22 - 150BG	234.4	150	19	118	48	22	26	51	5	10	3.10
5026-154-022-200	SBT40 x FMB22 - 200BG	284.4	200	19	168	48	22	26	51	5	10	4.00
5026-154-022-250	SBT40 x FMB22 - 250BG	334.4	250	19	218	48	22	26	51	5	10	4.90
5027-154-022-150	SBT50 x FMB22 - 150BG	270.8	150	19	107	58	22	26	62.5	5	10	6.80
5027-154-022-200	SBT50 x FMB22 - 200BG	320.8	200	19	157	58	22	26	62.5	5	10	8.40
5027-154-022-250	SBT50 x FMB22 - 250BG	370.8	250	19	207	58	22	26	62.5	5	10	9.40
5027-154-022-300	SBT50 x FMB22 - 300BG	420.8	300	19	257	58	22	26	62.5	5	10	10.4
5027-154-022-350	SBT50 x FMB22 - 350BG	470.8	350	19	307	58	22	26	62.5	5	10	11.4
5027-154-022-400	SBT50 x FMB22 - 400BG	520.8	400	19	352	58	22	26	62.5	5	10	12.4
5027-154-022-450	SBT50 x FMB22 - 450BG	570.8	450	19	402	58	22	26	62.5	5	10	13.4
5027-154-022-500	SBT50 x FMB22 - 500BG	620.8	500	19	452	58	22	26	62.5	5	10	14.4
5027-154-027-150	SBT50 x FMB27 - 150BG	271.8	150	20	107	70	27	31.5	78	5	12	6.80
5027-154-027-200	SBT50 x FMB27 - 200BG	321.8	200	20	154	70	27	31.5	78	5	12	8.40
5027-154-027-250	SBT50 x FMB27 - 250BG	371.8	250	20	204	70	27	31.5	78	5	12	9.40
5027-154-027-300	SBT50 x FMB27 - 300BG	421.8	300	20	254	70	27	31.5	78	5	12	10.4
5027-154-027-350	SBT50 x FMB27 - 350BG	471.8	350	20	307	70	27	31.5	78	5	12	11.4
5027-154-027-400	SBT50 x FMB27 - 400BG	521.8	400	20	352	70	27	31.5	78	5	12	12.4
5027-154-027-450	SBT50 x FMB27 - 450BG	571.8	450	20	402	70	27	31.5	78	5	12	13.4
5027-154-027-500	SBT50 x FMB27 - 500BG	621.8	500	20	452	70	27	31.5	78	5	12	14.4
5027-154-032-150	SBT50 x FMB32 - 150BG	273.8	150	22	107	78	32	41	85	7	14	7.00
5027-154-032-200	SBT50 x FMB32 - 200BG	323.8	200	22	157	78	32	41	85	7	14	8.50
5027-154-032-250	SBT50 x FMB32 - 250BG	373.8	250	22	207	78	32	41	85	7	14	9.50
5027-154-032-300	SBT50 x FMB32 - 300BG	423.8	300	22	257	78	32	41	85	7	14	10.5
5027-154-032-350	SBT50 x FMB32 - 350BG	473.8	350	22	307	78	32	41	85	7	14	11.5
5027-154-032-400	SBT50 x FMB32 - 400BG	523.8	400	22	357	78	32	41	85	7	14	12.5
5027-154-032-450	SBT50 x FMB32 - 450BG	573.8	450	22	407	78	32	41	85	7	14	13.5
5027-154-032-500	SBT50 x FMB32 - 500BG	623.8	500	22	460	80	32	41	85	7	14	14.5

Features:

- Tolerance of d1 the connection part with Diamond Brush:h6.

Pull Stud

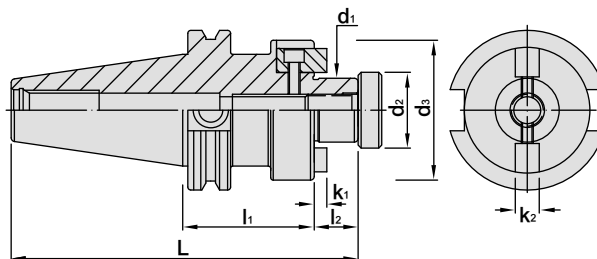


P.33~34

SCAT FACE MILL ARBOR

Dual
DRIVE+

SCAT / FMA 法蘭加厚型平面銑刀桿



INCHES

MODEL NO.	TYPE	L	l ₁	l ₂	d ₁	d ₂	d ₃	K ₁	K ₂	WEIGHT (KGS)
5043-151-A64-206	SCAT40 x FMA1" - 2.06"	5.434	2.06	0.687	1	1.1875	2.19	0.188	0.375	1.50
5043-151-A64-400	SCAT40 x FMA1" - 4"	7.374	4	0.687	1	1.1875	2.19	0.188	0.375	2.55
5043-151-A64-600	SCAT40 x FMA1" - 6"	9.374	6	0.687	1	1.1875	2.19	0.188	0.375	2.75
5043-151-A72-221	SCAT40 x FMA1-1/4" - 2.21"	5.584	2.21	0.687	1.25	1.5	2.75	0.25	0.5	2.60
5043-151-A72-400	SCAT40 x FMA1-1/4" - 4"	7.374	4	0.687	1.25	1.5	2.75	0.25	0.5	2.75
5043-151-A72-600	SCAT40 x FMA1-1/4" - 6"	9.374	6	0.687	1.25	1.5	2.75	0.25	0.5	2.95

Features:

- Tolerance of d₁ the connection part with Diamond Brush:h6.

Pull Stud



P.35

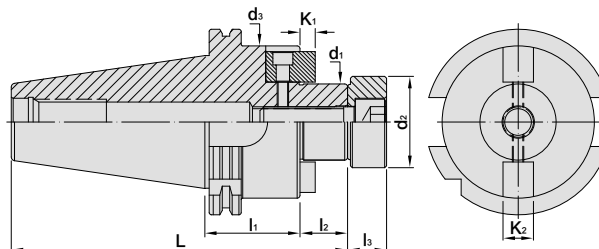


SDAT FACE MILL ARBOR

FMB TYPE

Dual
DRIVE+

SDAT / FMB 法蘭加厚型平面銑刀桿



METRIC

MODEL NO.	TYPE	L	l ₁	l ₂	l ₃	d ₁	d ₂	d ₃	K ₁	K ₂	WEIGHT (KGS)
5066-153-022-035	SDAT40 x FMB22 - 35	122.4	35	19	14	22	26	48	5	10	1.20
5066-153-027-060	SDAT40 x FMB27 - 60	148.4	60	20	16	27	31.5	58	5	12	1.80
5066-153-032-060	SDAT40 x FMB32 - 60	150.4	60	22	16	32	41	66	6	14	2.30
5066-153-040-060	SDAT40 x FMB40 - 60	153.4	60	25	20.5	40	48	80	8	16	2.80
5067-153-022-035	SDAT50 x FMB22 - 35	155.75	35	19	14	22	26	48	5	10	3.40
5067-153-027-035	SDAT50 x FMB27 - 35	156.75	35	20	16	27	31.5	58	5	12	3.50
5067-153-032-035	SDAT50 x FMB32 - 35	158.75	35	22	16	32	41	66	6	14	3.70

Features:

- Tolerance of d1 the connection part with Diamond Brush:h6.

Pull Stud



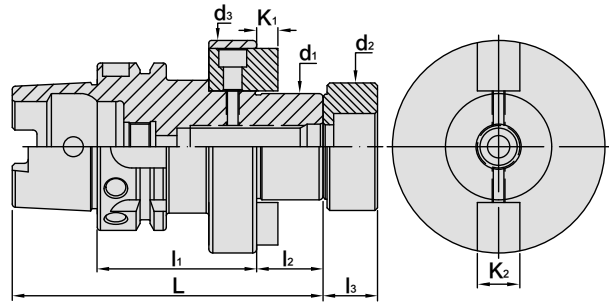
P.36

HSK FACE MILL ARBOR

FMB TYPE

HSK 平面銑刀桿

(DIN 69893-1)



METRIC

MODEL NO.	TYPE	L	l ₁	l ₂	l ₃	d ₁	d ₂	d ₃	K ₁	K ₂	WEIGHT (KGS)
5071-153-016-050	HSK40A x FMB16 - 50	87	50	17	-	16	-	40	5	8	0.70
5071-153-022-060	HSK40A x FMB22 - 60	99	60	19	14	22	26	52	4.8	10	0.80
5071-153-027-060	HSK40A x FMB27 - 60	101	60	21	16	27	31.5	60	5.8	12	1.00
5071-153-032-060	HSK40A x FMB32 - 60	104	60	24	16	32	41	78	6.8	14	1.10
5072-153-016-050	HSK50A x FMB16 - 50	92	50	17	-	16	-	40	5	8	1.10
5072-153-022-060	HSK50A x FMB22 - 60	104	60	19	14	22	26	48	4.8	10	1.00
5072-153-027-060	HSK50A x FMB27 - 60	106	60	21	16	27	31.5	60	5.8	12	1.30
5072-153-032-060	HSK50A x FMB32 - 60	109	60	24	16	32	41	78	6.8	14	1.50
5073-153-016-050	HSK63A x FMB16 - 50	99	50	17	-	16	-	40	5	8	1.20
5073-153-022-050	HSK63A x FMB22 - 50	101	50	19	14	22	26	50	4.8	10	1.30
5073-153-027-060	HSK63A x FMB27 - 60	113	60	21	16	27	31.5	53	5.8	12	1.50
5073-153-032-060	HSK63A x FMB32 - 60	116	60	24	16	32	41	78	6.8	14	1.60
5075-153-022-050	HSK100A x FMB22 - 50	119	50	19	14	22	26	48	4.8	10	2.70
5075-153-027-050	HSK100A x FMB27 - 50	121	50	21	16	27	31.5	60	5.8	12	2.90
5075-153-032-050	HSK100A x FMB32 - 50	124	50	24	16	32	41	78	6.8	14	3.00

Features:

- Tolerance of d1 the connection part with Diamond Brush:h6.

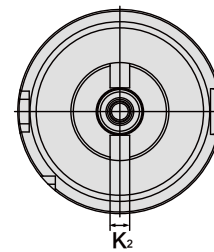
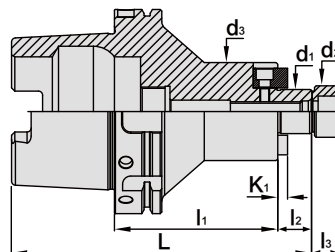


HSK FACE MILL ARBOR

FMB TYPE

HSK 平面铣刀桿

(DIN 69893-1)

**METRIC**

MODEL NO.	TYPE	L	l ₁	l ₂	l ₃	d ₁	d ₂	d ₃	K ₁	K ₂	WEIGHT (KGS)
5076-153-022-050	HSK125A x FMB22 - 50	132	50	19	14	22	26	48	4.8	10	3.80
5076-153-022-100	HSK125A x FMB22 - 100	182	100	19	14	22	26	48	4.8	10	5.00
5076-153-022-130	HSK125A x FMB22 - 130	212	130	19	14	22	26	48	4.8	10	5.30
5076-153-022-160	HSK125A x FMB22 - 160	242	160	19	14	22	26	48	4.8	10	6.40
5076-153-022-200	HSK125A x FMB22 - 200	282	200	19	14	22	26	48	4.8	10	7.80
5076-153-027-055	HSK125A x FMB27 - 55	139	55	21	16	27	31.5	60	5.8	12	4.20
5076-153-027-100	HSK125A x FMB27 - 100	184	100	21	16	27	31.5	60	5.8	12	5.50
5076-153-027-130	HSK125A x FMB27 - 130	214	130	21	16	27	31.5	60	5.8	12	6.10
5076-153-027-160	HSK125A x FMB27 - 160	244	160	21	16	27	31.5	60	5.8	12	7.30
5076-153-027-200	HSK125A x FMB27 - 200	284	200	21	16	27	31.5	60	5.8	12	8.80
5076-153-032-070	HSK125A x FMB32 - 70	157	70	24	16	32	41	78	6.8	14	5.40
5076-153-032-100	HSK125A x FMB32 - 100	187	100	24	16	32	41	78	6.8	14	6.50
5076-153-032-130	HSK125A x FMB32 - 130	217	130	24	16	32	41	78	6.8	14	7.50
5076-153-032-160	HSK125A x FMB32 - 160	247	160	24	16	32	41	78	6.8	14	8.90
5076-153-032-200	HSK125A x FMB32 - 200	287	200	24	16	32	41	78	6.8	14	10.80

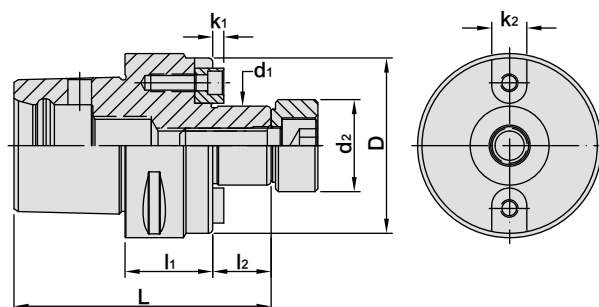
Features:

- Tolerance of d1 the connection part with Diamond Brush:h6.

PSC FACE MILL ARBOR

FMB TYPE

PSC / FMB 平面銑刀桿



METRIC

MODEL NO.	TYPE	L	l ₁	l ₂	D	d ₁	d ₂	k ₁	k ₂	WEIGHT (KGS)
5140-153-016-030	PSC32 x FMB16 - 30	66	30	17	32	16	-	5	8	0.30
5141-153-016-032	PSC40 x FMB16 - 32	73	32	17	34	16	-	5	8	0.30
5141-153-016-055	PSC40 x FMB16 - 55	96	55	17	34	16	-	5	8	0.40
5141-153-022-025	PSC40 x FMB22 - 25	68	25	19	40	22	26	4.8	10	0.40
5141-153-022-055	PSC40 x FMB22 - 55	98	55	19	48	22	26	4.8	10	0.70
5142-153-016-035	PSC50 x FMB16 - 35	82	35	17	34	16	-	5	8	0.60
5142-153-016-070	PSC50 x FMB16 - 70	117	70	17	34	16	-	5	8	0.70
5142-153-022-025	PSC50 x FMB22 - 25	74	25	19	48	22	26	4.8	10	0.60
5142-153-022-070	PSC50 x FMB22 - 70	119	70	19	48	22	26	4.8	10	1.00
5142-153-027-025	PSC50 x FMB27 - 25	75	25	20	50	27	31.5	5.8	12	0.70
5142-153-032-040	PSC50 x FMB32 - 40	92	40	22	63	32	41	7	14	1.20
5143-153-016-040	PSC63 x FMB16 - 40	95	40	17	34	16	-	5	8	0.90
5143-153-022-040	PSC63 x FMB22 - 40	97	40	19	48	22	26	4.8	10	0.90
5143-153-027-030	PSC63 x FMB27 - 30	88	30	20	60	27	31.5	5.8	12	1.00
5143-153-032-045	PSC63 x FMB32 - 45	105	45	22	78	32	41	6.8	14	1.60
5144-153-016-050	PSC80 x FMB16 - 50	115	50	17	34	16	-	5	8	1.80
5144-153-022-030	PSC80 x FMB22 - 30	97	30	19	48	22	26	4.8	10	1.80
5144-153-027-030	PSC80 x FMB27 - 30	98	30	20	60	27	31.5	5.8	12	2.00
5144-153-032-030	PSC80 x FMB32 - 30	100	30	22	78	32	41	7	14	2.10

Features:

- Tolerance of d₁ the connection part with Diamond Brush:h6.



MEMO

Blank lined area for writing the memo content.



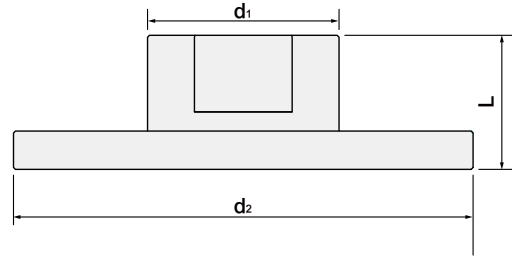
ACCESSORIES

CATEGORY

DDB DIAMOND DRESSING BOARD	32
BT PULL STUD	33-34
CAT PULL STUD	35
DAT PULL STUD	36

DDB DIAMOND DRESSING BOARD

DDB 鑽石整修板



MODEL NO.	TYPE	L	d ₁	d ₂	WEIGHT (KGS)
5330-098-060-00	DDB120	35	50	120	0.54

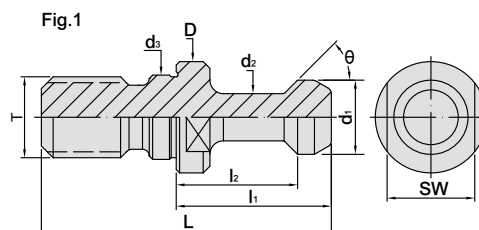
Features:

- ▶ The front surface is coated with high hardness of diamond powders for truing the worn bristle. The brush can be used continuously.
- ▶ Ideal for use with CFB CERAMIC FIBER BRUSH and DMB DIAMOND BRUSH.
- ▶ The plate is light-weighted aluminum alloy, easy operation.
- ▶ Wet machining is recommended to let coolant fluid flush away the dust and particles, maintaining a healthy working environment.

**THE BEST TOOLS TO PERFECT YOUR WORKPIECES
BY AUTOMATION!**

BT PULL STUD

BT 螺栓拉頭



W/O Coolant

MODEL NO.	TYPE	L	l ₁	l ₂	D	d ₁	d ₂	d ₃	d ₄	θ	T	SW	Fig.	WEIGHT (KGS)
5230-010-45-00	BT30 - 45°	43	23	18	16.5	11	7	12.5	-	45°	M12	13	1	0.04
5230-011-45-00	BT40 - 45°	60	35	28	23	15	10	17	-	45°	M16	19	1	0.10
5230-012-45-00	BT50 - 45°	85	45	35	38	23	17	25	-	45°	M24	30	1	0.30
5230-010-60-00	BT30 - 60°	43	23	18	16.5	11	7	12.5	-	60°	M12	13	1	0.04
5230-011-60-00	BT40 - 60°	60	35	28	23	15	10	17	-	60°	M16	19	1	0.10
5230-012-60-00	BT50 - 60°	85	45	35	38	23	17	25	-	60°	M24	30	1	0.30
5230-010-90-00	BT30 - 90°	43	23	18	16.5	11	7	12.5	-	90°	M12	13	1	0.04
5230-011-90-00	BT40 - 90°	60	35	28	23	15	10	17	-	90°	M16	19	1	0.10
5230-012-90-00	BT50 - 90°	85	45	35	38	23	17	25	-	90°	M24	30	1	0.30

Features:

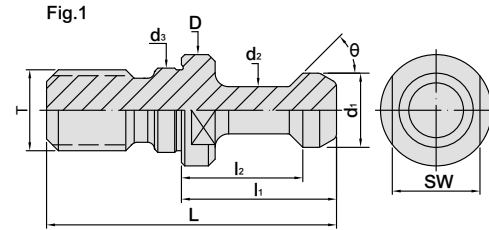
- ▶ Please make sure the pull stud conforms to the machine type.



BT PULL STUD

with ground thread

BT 研磨螺栓拉頭



W/O Coolant

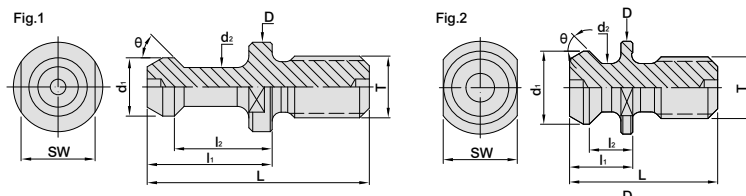
MODEL NO.	TYPE	L	l ₁	l ₂	D	d ₁	d ₂	d ₃	d ₄	θ	T	SW	Fig.	WEIGHT (KGS)
5232-010-45-00	BT30 - 45°G	43	23	18	16.5	11	7	12.5	-	45°	M12	13	1	0.04
5232-011-45-00	BT40 - 45°G	60	35	28	23	15	10	17	-	45°	M16	19	1	0.10
5232-012-45-00	BT50 - 45°G	85	45	35	38	23	17	25	-	45°	M24	30	1	0.30
5232-010-60-00	BT30 - 60°G	43	23	18	16.5	11	7	12.5	-	60°	M12	13	1	0.04
5232-011-60-00	BT40 - 60°G	60	35	28	23	15	10	17	-	60°	M16	19	1	0.10
5232-012-60-00	BT50 - 60°G	85	45	35	38	23	17	25	-	60°	M24	30	1	0.30
5232-010-90-00	BT30 - 90°G	43	23	18	16.5	11	7	12.5	-	90°	M12	13	1	0.04
5232-011-90-00	BT40 - 90°G	60	35	28	23	15	10	17	-	90°	M16	19	1	0.10
5232-012-90-00	BT50 - 90°G	85	45	35	38	23	17	25	-	90°	M24	30	1	0.30

Features:

- ▶ Please make sure the pull stud conforms to the machine type.

CAT PULL STUD

CAT 螺栓拉頭



W/O Coolant

MODEL NO.	TYPE	L	l ₁	l ₂	D	d ₁	d ₂	d ₃	θ	SW	T-UNC	Fig.	WEIGHT (KGS)
5230-031-45-00	CAT40 - ANSI	1.5	0.64	0.44	0.94	0.74	0.49	-	45°	0.75	5/8" - 11	2	0.09
5230-032-45-00	CAT50 - ANSI	2.3	1	0.7	1.44	1.14	0.82	-	45°	1.25	1" - 8	2	0.25
5230-031-45-01	CAT40 - MAS - I	2.25	1.266	0.99	0.905	0.59	0.394	-	45°	0.748	5/8" - 11	1	0.09
5230-031-60-00	CAT40 - MAS - II	2.25	1.266	0.99	0.905	0.59	0.394	-	60°	0.748	5/8" - 11	1	0.09
5230-031-90-00	CAT40 - MAS - III	2.25	1.266	0.99	0.905	0.59	0.394	-	90°	0.748	5/8" - 11	1	0.09
5230-032-45-01	CAT50 - MAS - I	3.346	1.772	1.378	1.496	0.906	0.669	-	45°	1.181	1" - 8	1	0.25
5230-032-60-00	CAT50 - MAS - II	3.346	1.772	1.378	1.496	0.906	0.669	-	60°	1.181	1" - 8	1	0.25
5230-032-90-00	CAT50 - MAS - III	3.346	1.772	1.378	1.496	0.906	0.669	-	90°	1.181	1" - 8	1	0.25

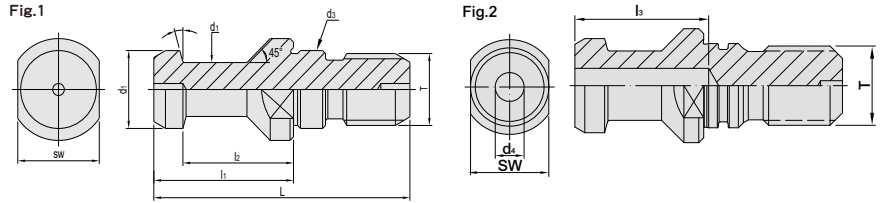
Features:

- ▶ Please make sure the pull stud conforms to the machine type.

DAT PULL STUD

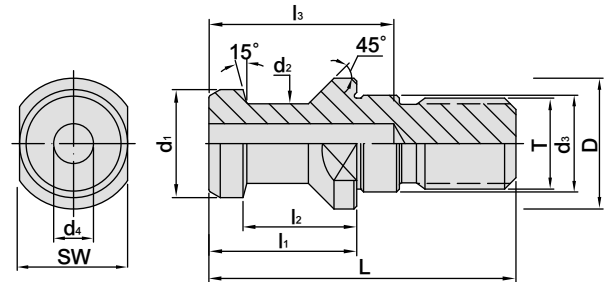
DAT 螺栓拉頭

(DIN 7388 - 3)



W/O Coolant

MODEL NO.	TYPE	L	l ₁	l ₂	l ₃	D	d ₁	d ₂	d ₃	d ₄	θ	SW	T	Fig.	WEIGHT (KGS)
5230-050-15-02	DAT30 - A	44	24	19	-	17	13	9	13	-	15°	14	M12	1	0.03
5230-050-15-01	DAT30 - B	44	24	19	-	17	13	9	13	-	15°	14	M12	2	0.03
5230-051-15-01	DAT40 - B	54	26	20	27	23	19	14	17	7	15°	19	M16	2	0.09
5230-052-15-01	DAT50 - B	74	34	25	37	36	28	21	25	11.5	15°	30	M24	2	0.25



MODEL NO.	TYPE	L	l ₁	l ₂	l ₃	D	d ₁	d ₂	d ₃	d ₄	T	WEIGHT (KGS)
5230-051-15-02	DAT40	54	26	20	27	23	19	14	17	7	M16	0.09

MEMO

Blank lined area for writing the memo content.



MEMO

Blank lined area for writing the memo content.



MEMO

Blank lined area for writing the memo content.





SHIN-YAIN INDUSTRIAL CO., LTD.
No.198, Jingpu Rd., Qingshui Dist., Taichung City 436, Taiwan
Tel: +886-4-26237575 | Fax: +886-4-26237676 | E-mail: sales@syic.com

