



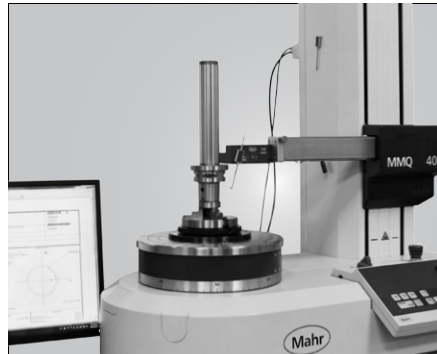
# FLANGE

NO.2020-11





# COMPANY INTRODUCTION







# 品質創造信譽 信譽保證品質

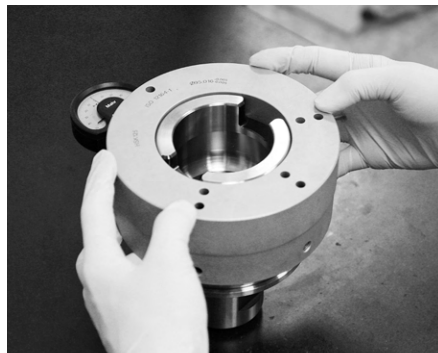
Quality creates reputation; reputation ensures quality.

## About SYIC

Established in 1979, SYIC is a professional manufacturer of precise tool holders, cutting tools, angel heads, boring series and collets with more than 500 employees. The taper types of tool holders we manufacture include BT (MAS403), CAT (ANSI B5.50), DAT (DIN69871-A), HSK (DIN69893), PSC (DIN ISO26623-1), VDI (DIN ISO10889) and straight shank holders.

SYIC is certified to ISO9001 and ISO14001. With contribution to the design, production and sale of high accuracy and inventive products, SYIC has over 300 pieces of patents worldwide. SYIC keeps investing in high-end equipment and measuring instruments from Japan and Europe to implement excellent quality control and manufacturing capability.

SYIC keeps the core value "Quality creates reputation; reputation ensures quality" to impress our customers, possessing professional technical skills to provide comprehensive solutions for customers, improving customers' machining efficiency, and enhancing the mutual competitiveness with customers. Based on the mission of "Excellent service, supreme quality," SYIC will continue to launch more high precision products to customers.



# Tool Holders

Your reliable partner!

— CNC turning, milling and grinding —

BMT  
PSC  
HSK  
SBT  
SCAT  
SDAT

Premium  
Quality

[www.syic.com](http://www.syic.com)



供需平衡 共榮共存

Maintain the balance of suppliers and customers and grow together.

未來之路 無限寬廣

Create a great future with infinite opportunities.

營運獲利 永續經營

Run a profitable company with sustainable development.

合作到底 共創通贏

Keep everlasting cooperation and together create a win-win situation.

成就彼此 榮耀一切

Support each other and accomplish mutual success.



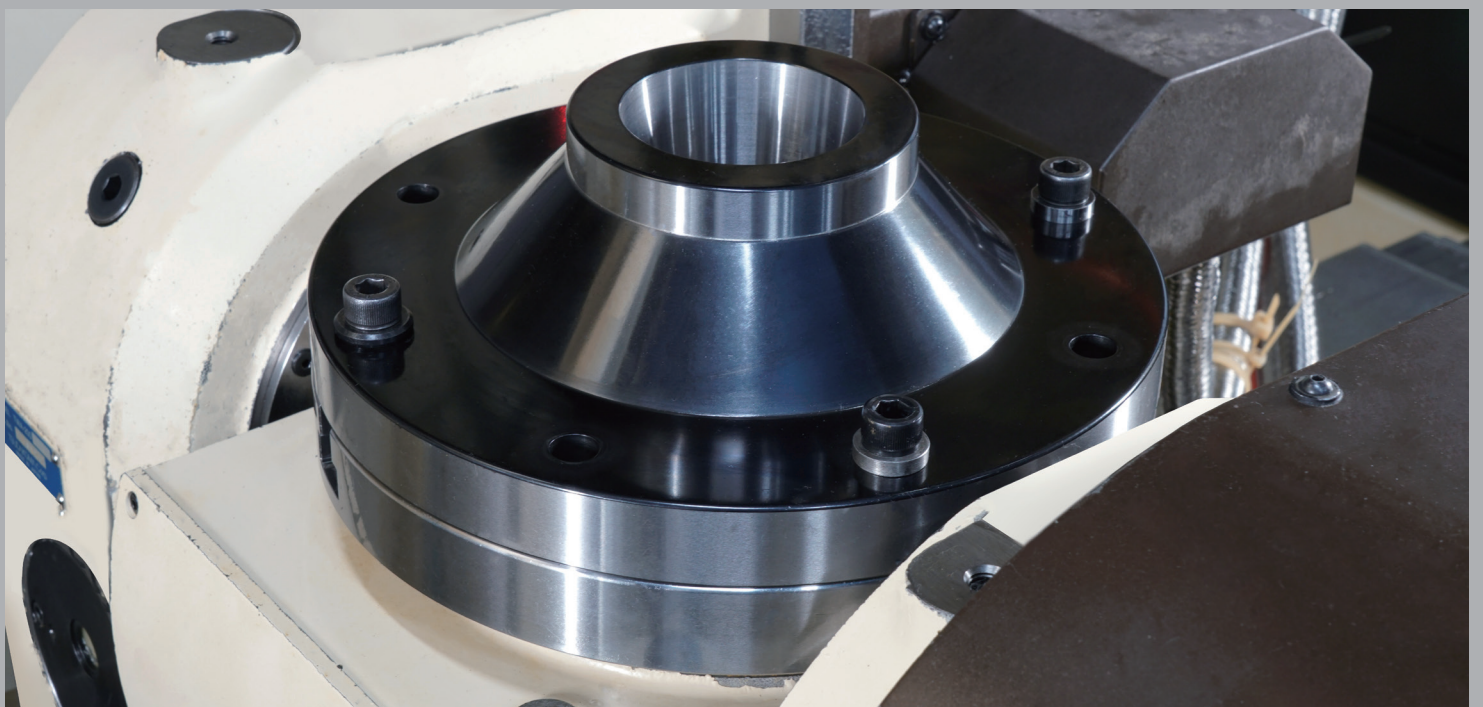
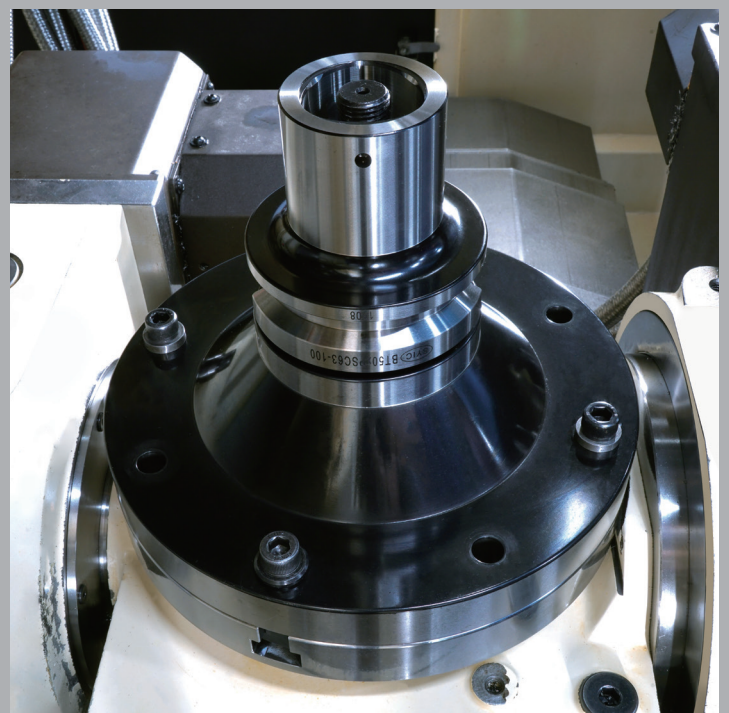
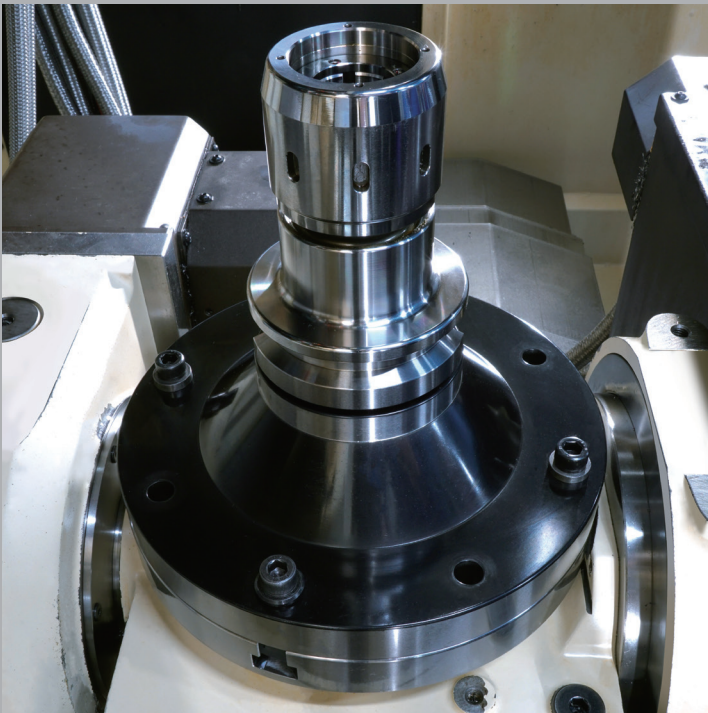
### **Innovation is our mission!**

SYIC is committed to developing high precision products to optimize the machining process and offering professional technical service. With experienced technical professionals, our products are developed in response to different types of industries. We aim to achieve customers' demands from different industries including machining industry, mold and die industry, aerospace industry, automotive industry, and energy industry. We offer the most professional and technical service, effectively resolve your machining problems to create maximum production efficiency.





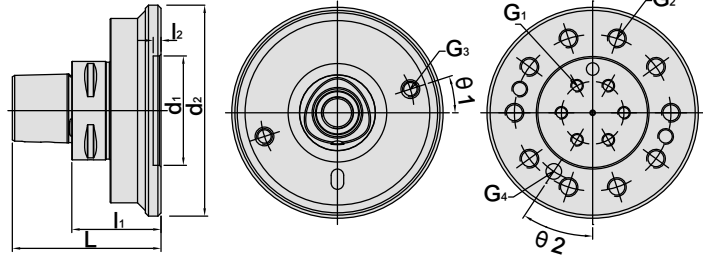
# APPLICATION of FLANGE





# FLANGE

## 法蘭盤



MODEL NO.	TYPE	L	l <sub>1</sub>	l <sub>2</sub>	d <sub>1</sub>	d <sub>2</sub>	G1		G2		G3		θ <sub>1</sub>	G4		θ <sub>2</sub>	WEIGHT (KGS)
							T	P.C.D	T	P.C.D	T	P.C.D		T	P.C.D		
5143-161-120-57A	PSC63 x FLG120 - 57A	95	57	5	70	120	6-M8	40	8-M12	100	2-M10	98	0°	12	90	0°	3.17
5143-161-120-57B	PSC63 x FLG120 - 57B	95	57	5	70	120	6-M8	40	10-M12	100	2-M10	98	18°	12	90	0°	3.13
5143-161-120-57C	PSC63 x FLG120 - 57C	95	57	5	70	120	6-M8	40	8-M12	100	2-M10	98	0°	10	100	37.5°	3.19
5143-161-120-57D	PSC63 x FLG120 - 57D	95	57	5	70	120	6-M8	40	6-M12	92	2-M10	98	18°	12	92	45°	3.21
5143-161-120-57E	PSC63 x FLG120 - 57E	95	57	5	48	120	6-M8	34	6-M14	92	2-M10	98	0°	10	92	30°	3.26
5143-161-120-57F	PSC63 x FLG120 - 57F	95	57	5	48	120	6-M8	34	8-M12	100	2-M10	98	18°	10	100	27°	3.27
5143-161-120-57G	PSC63 x FLG120 - 57G	95	57	5	58	120	6-M8	34	8-M12	100	2-M10	98	0°	10	100	45°	3.24
5143-161-135-49A	PSC63 x FLG135 - 49.2A	87.2	49.2	5	70	135	6-M8	40	10-M12	110	2-M10	98	18°	12	100	0°	3.03
5143-161-135-49B	PSC63 x FLG135 - 49.2B	87.2	49.2	5	70	135	6-M8	40	10-M12	110	2-M10	98	18°	10	110	33°	3.09
5143-161-135-57	PSC63 x FLG135 - 57	95	57	5	70	135	6-M8	40	10-M12	100	2-M10	98	18°	10	90	0°	3.42
5143-161-135-60	PSC63 x FLG135 - 60	98	60	5	70	135	6-M8	40	8-M12	100	2-M10	98	18°	10	100	22.5°	4.25
5143-161-160-59	PSC63 x FLG160 - 59.2	97.2	59.2	5	70	160	6-M8	40	8-M12	120	2-M10	98	18°	10	110	13.5°	5.52
5143-161-160-60	PSC63 x FLG160 - 60	98	60	5	70	160	6-M8	40	8-M12	120	2-M10	98	18°	10	120	22.5°	5.81
5143-161-160-86	PSC63 x FLG160 - 86.5	124.5	86.5	5	70	160	6-M8	40	8-M12	120	2-M10	98	0°	10	120	52.5°	7.90

# FLANGE

## 法蘭盤

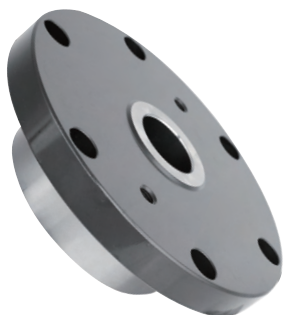


Fig.1

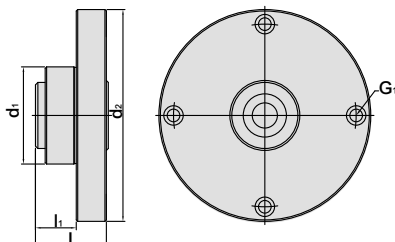
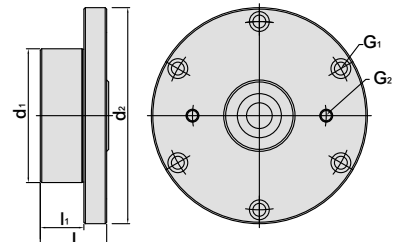


Fig.2

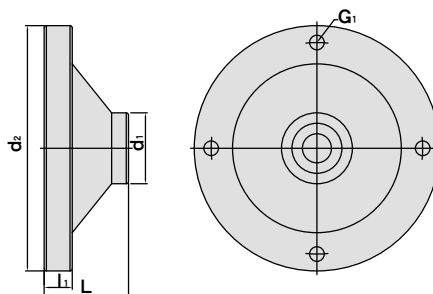


MODEL NO.	TYPE	L	l <sub>1</sub>	d <sub>1</sub>	d <sub>2</sub>	COMPATIBLE TOOLING	G1		Fig	WEIGHT (KGS)
							T	P.C.D		
5296-47-100-30-00	FLG100 x 30 - 42	75	42	100	218	#30	4-M12	188	1	10.7
5296-47-100-40-00	FLG100 x 40 - 42	75	42	100	218	#40	4-M12	188	1	10.4
5296-47-100-50-00	FLG100 x 50 - 42	75	42	100	218	#50	4-M12	188	1	9.37

MODEL NO.	TYPE	L	l <sub>1</sub>	d <sub>1</sub>	d <sub>2</sub>	COMPATIBLE TOOLING	G1		G2		Fig	WEIGHT (KGS)
							T	P.C.D	T	P.C.D		
5296-47-135-40-00	FLG135 x 40 - 44	75	44	135	218	#40	6-M12	190	2-M12	135	2	10.7
5296-47-135-50-00	FLG135 x 50 - 80	105	80	135	218	#50	6-M12	190	2-M12	135	2	11.4

# FLANGE

## 法蘭盤



MODEL NO.	TYPE	L	l <sub>1</sub>	d <sub>1</sub>	d <sub>2</sub>	COMPATIBLE TOOLING	G1		WEIGHT (KGS)
							T	P.C.D	
5296-47-218-30-00	FLG218 x 30 - 75	75	25	46	218	#30	4-M12	188	8.74
5296-47-218-40-00	FLG218 x 40 - 75	75	25	63	218	#40	4-M12	188	8.92
5296-47-218-50-00	FLG218 x 50 - 75	75	25	100	218	#50	4-M12	188	9.70
5296-47-218-30-01	FLG218 x 30 - 75	75	25	46	218	#30	6-M12	190	8.64
5296-47-218-40-01	FLG218 x 40 - 75	75	25	63	218	#40	6-M12	190	8.83
5296-47-218-50-01	FLG218 x 50 - 75	75	25	100	218	#50	6-M12	190	9.17
5296-47-250-40-00	FLG250 x 40 - 75	75	25	63	250	#40	4-M12	215	11.3
5296-47-250-50-00	FLG250 x 50 - 75	75	25	100	250	#50	4-M12	215	12.0



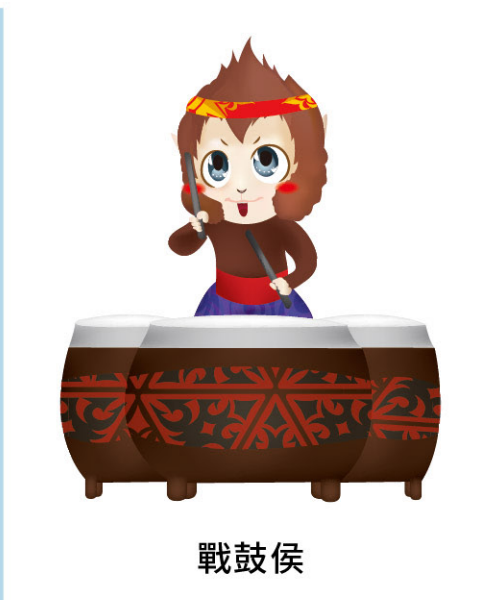
# MEMO

Blank lined area for writing the memo content.





智能侯



戰鼓侯



學識侯



俠客侯



勝侯王



登山侯



慢跑侯



咖啡侯



鐵馬侯



[www.syic.com](http://www.syic.com)





## SHIN-YAIN INDUSTRIAL CO., LTD.

No.198, Jingpu Rd., Qingshui Dist., Taichung City 436, Taiwan  
Tel: +886-4-26237575 | Fax: +886-4-26237676 | E-mail: sales@syic.com

