



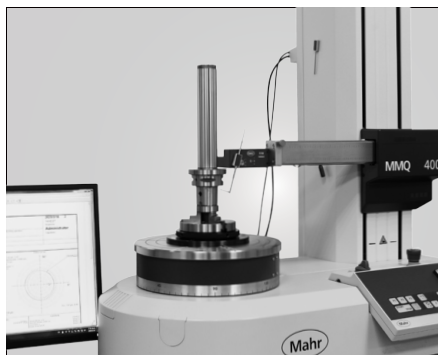
AWC JIG TOOL HOLDER

NO.2022-01





COMPANY INTRODUCTION





品質創造信譽 信譽保證品質

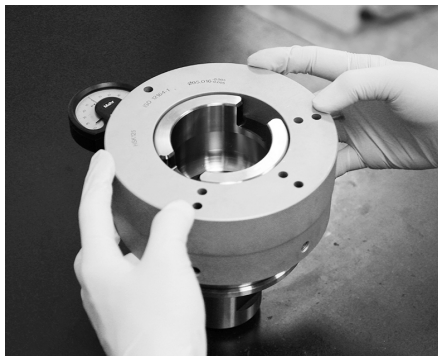
Quality creates reputation; reputation ensures quality.

About SYIC

Established in 1979, SYIC is a professional manufacturer of precise tool holders, cutting tools, angel heads, boring series and collets with more than 500 employees. The taper types of tool holders we manufacture include BT (MAS403), CAT (ANSI B5.50), DAT (DIN69871-A), HSK (DIN69893), PSC (ISO26623-1), VDI (DIN10889) and straight shank holders.

SYIC is certified to ISO9001 and ISO14001. With contribution to the design, production and sale of high accuracy and inventive products, SYIC has over 300 pieces of patents worldwide. SYIC keeps investing in high-end equipment and measuring instruments from Japan and Europe to implement excellent quality control and manufacturing capability.

SYIC keeps the core value "Quality creates reputation; reputation ensures quality" to impress our customers, possessing professional technical skills to provide comprehensive solutions for customers, improving customers' machining efficiency, and enhancing the mutual competitiveness with customers. Based on the mission of "Excellent service, supreme quality," SYIC will continue to launch more high precision products to customers.



Tool Holders

Your reliable partner!

————— CNC turning, milling and grinding —————

BMT
PSC
HSK
SBT
SCAT
SDAT
**Premium
Quality**

www.syic.com

供需平衡 共榮共存

Maintain the balance of suppliers and customers and grow together.

未來之路 無限寬廣

Create a great future with infinite opportunities.

營運獲利 永續經營

Run a profitable company with sustainable development.

合作到底 共創通贏

Keep everlasting cooperation and together create a win-win situation.

成就彼此 榮耀一切

Support each other and accomplish mutual success.



Innovation is our mission!

SYIC is committed to developing high precision products to optimize the machining process and offering professional technical service. With experienced technical professionals, our products are developed in response to different types of industries. We aim to achieve customers' demands from different industries including machining industry, mold and die industry, aerospace industry, automotive industry, and energy industry. We offer the most professional and technical service, effectively resolve your machining problems to create maximum production efficiency.

AWC JIG TOOL HOLDER

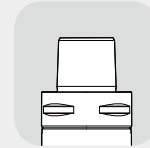
AWC JIG TOOL HOLDER

5~6

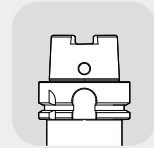


AWC JIG TOOL HOLDER

Taper: **PSC & HSK**,
with the best bending strength
and positioning accuracy.



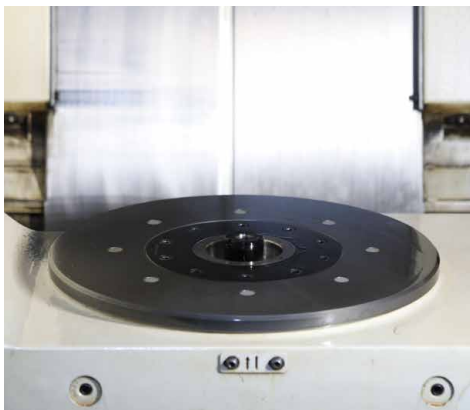
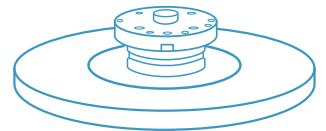
PSC



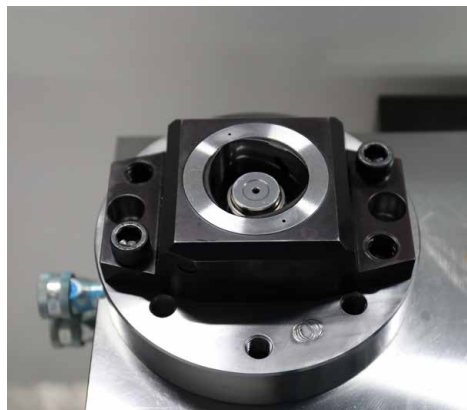
HSK

1 Quick Positioning and Clamping System

- Used for machine tables with quick positioning and clamping system.
- If a machine doesn't have a built-in quick positioning and clamping system, customers can install manual or hydraulic clamping system on the machine table.



Built-in Type



Hydraulic Type



Manual Type

2 Product Clamping Application



Workpiece clamped by self-centering vise

- Suitable for clamping round and square workpieces.



Workpiece clamped by three-jaw chuck

- Suitable for clamping round workpieces.



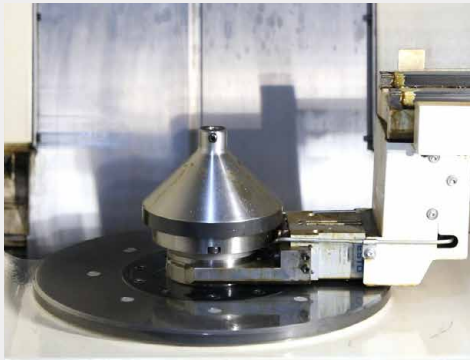
Workpiece clamped by hydraulic expansion toolholder



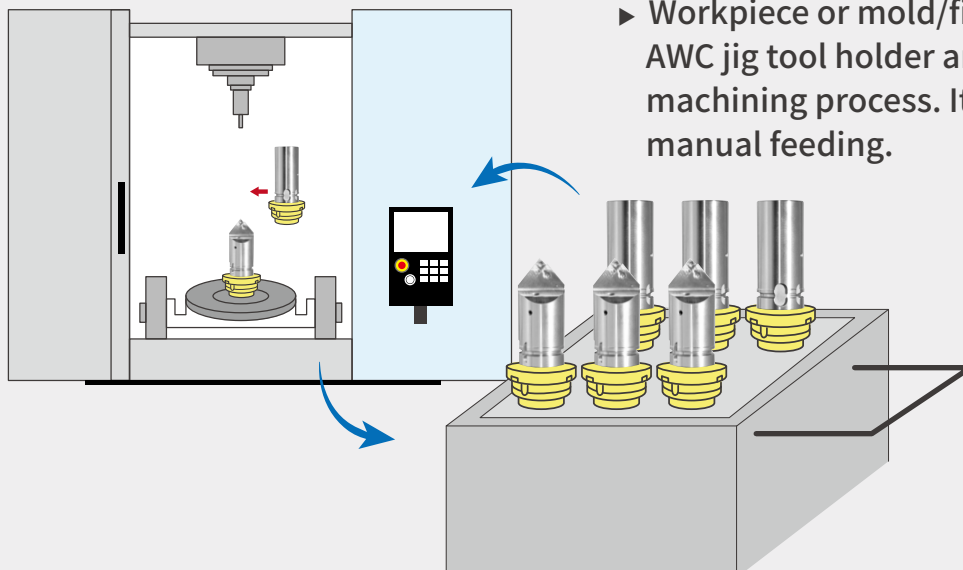
Workpiece clamped by quick change module

- Suitable for clamping all shapes of workpieces.

3 Improve Production Efficiency

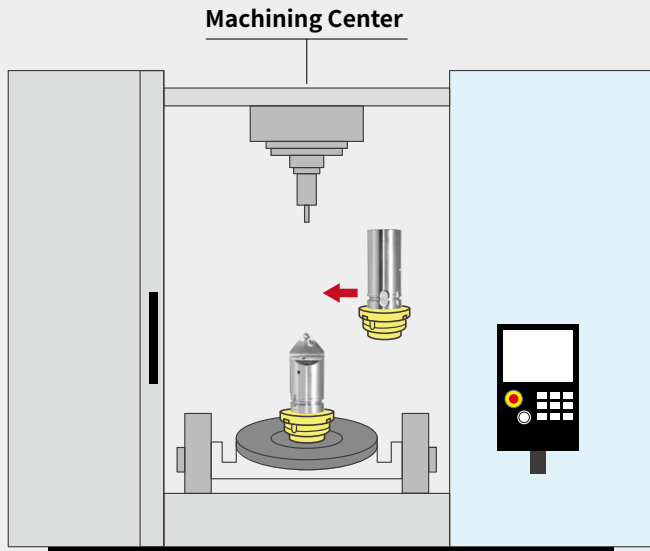


- The tool clamping system of machine table can quickly clamp or change AWC jig tool holders to increase production efficiency.
- Scan the QR-CODE to watch a demonstration video.

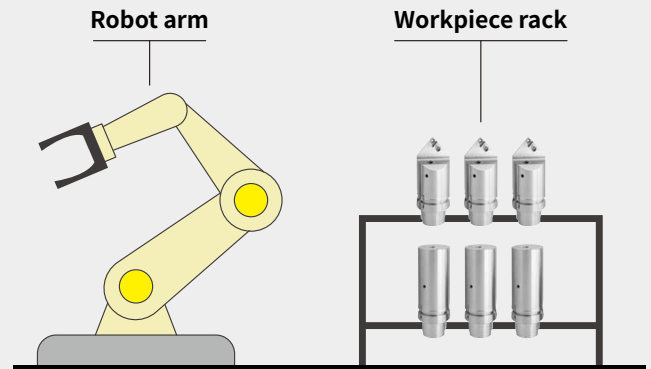


- Workpiece or mold/fixture can be pre-loaded in AWC jig tool holder and quickly changed during machining process. It saves the downtime for manual feeding.

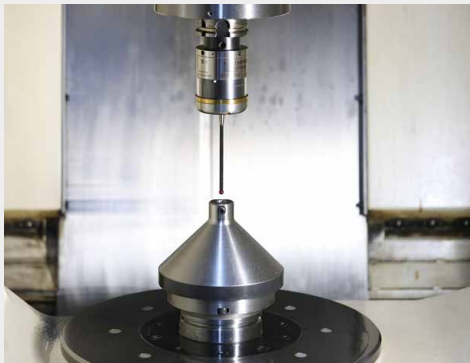
4 Support Automation System



► It's an indispensable choice to build automation system!



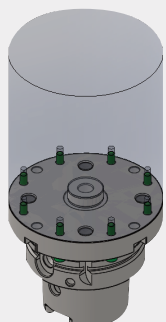
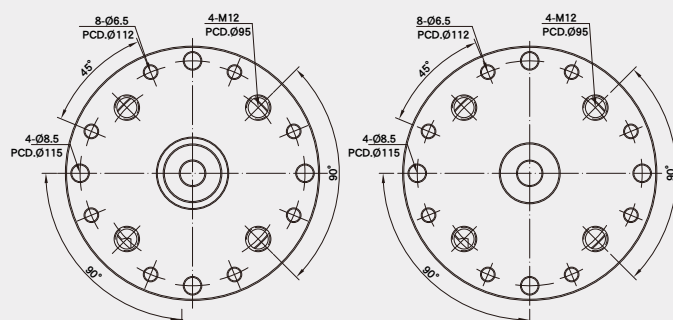
5 Use Touch Probe Holder for Accuracy Compensation



► It's recommended to use high-precision touch probe holder for workpiece positioning and size compensation to reduce manual operation errors, shorten the time for calibrating molds/fixtures, and ensure machining accuracy.

6 Various Clamping Methods

► There are 3 different sizes of screw holes on the face of AWC jig tool holder, which provides customers with various methods of clamping workpieces and molds/fixtures. Different screw hole sizes or quantities are also available for customization.



AWC JIG TOOL HOLDER

AWC 治具刀桿



Fig.1

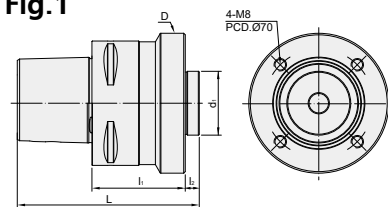


Fig.2

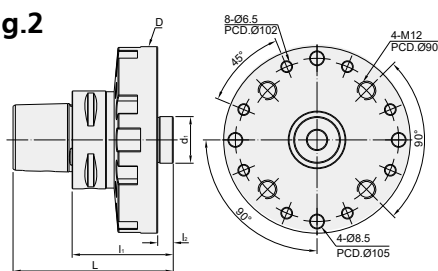
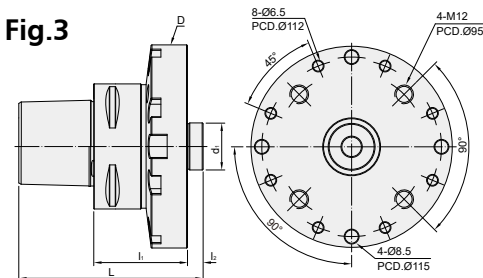


Fig.3



MODEL NO.	TYPE	L	l ₁	l ₂	D	d ₁	Fig.	WEIGHT (KGS)
5143-027-120-055	PSC63 x AWC120A - 55	103	55	10	120	30	2	2.92
5144-027-090-060	PSC80 x AWC90A - 60	117	60	9	90	41.06	1	3.6
5144-027-130-060	PSC80 x AWC130A - 60	118	60	10	130	30	3	4.3
5073-027-120-055	HSK63A x AWC120A - 55	97	55	10	120	30	2	2.42
5075-027-090-060	HSK100A x AWC90A - 60	119	60	9	90	41.06	1	3.2
5075-027-130-060	HSK100A x AWC130A - 60	120	60	10	130	30	3	4.6

Fig.1



Features:

- ▶ Used for machining centers with quick positioning and clamping system.
- ▶ Workpiece can be pre-loaded in AWC jig tool holder and quickly changed during machining process to improve production efficiency.
- ▶ There are 3 different sizes of screw holes for clamping(Fig.2). Customization also acceptable.
- ▶ Using AWC JIG TOOL HOLDER to support automation systems can realize the processing needs of either batch production or flow production.



AWC JIG TOOL HOLDER

AWC 治具刀桿



Fig.1

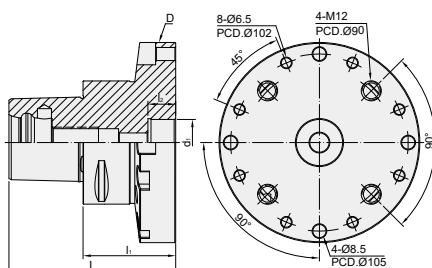
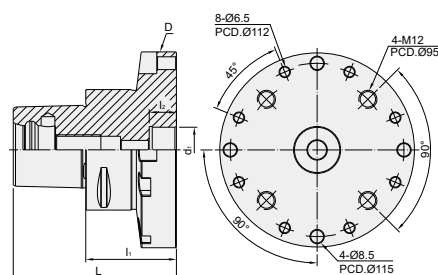


Fig.2



MODEL NO.	TYPE	L	l ₁	l ₂	D	d ₁	Fig.	WEIGHT (KGS)
5143-028-120-055	PSC63 x AWC120B - 55	93	55	16	120	30	1	2.79
5144-028-130-060	PSC80 x AWC130B - 60	108	60	16	130	30	2	4.2
5073-028-120-055	HSK63A x AWC120B - 55	87	55	16	120	30	1	2.33
5075-028-130-060	HSK100A x AWC130B - 60	110	60	16	130	30	2	4.5

Features:

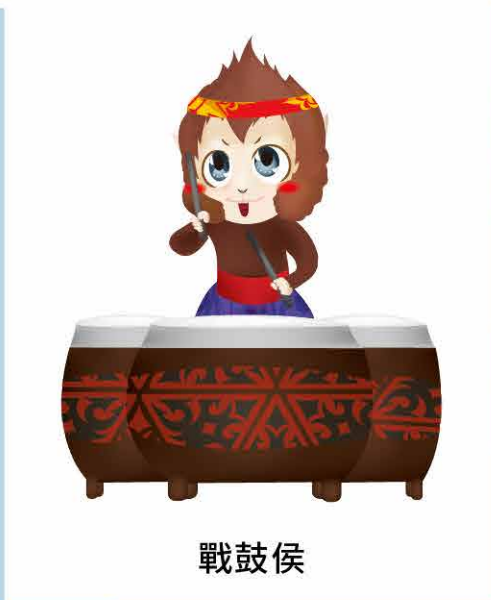
- Used for machining centers with quick positioning and clamping system.
- Workpiece can be pre-loaded in AWC jig tool holder and quickly changed during machining process to improve production efficiency.
- There are 3 different sizes of screw holes for clamping. Customization also acceptable.
- Using AWC JIG TOOL HOLDER to support automation systems can realize the processing needs of either batch production or flow production.

MEMO





智能侯



戰鼓侯



學識侯



俠客侯



勝侯王



登山侯



慢跑侯



咖啡侯



鐵馬侯



www.syic.com



SHIN-YAIN INDUSTRIAL CO., LTD.

No.198, Jingpu Rd., Qingshui Dist., Taichung City 436, Taiwan

Tel: +886-4-26237575 | Fax: +886-4-26237676 | E-mail: sales@syic.com

