



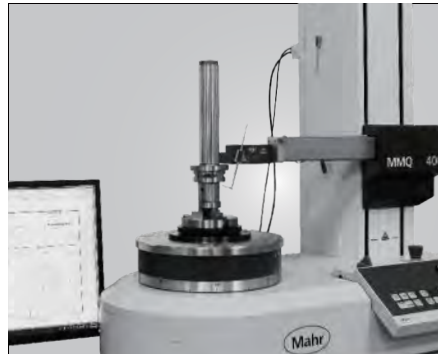
USC ULTIMATE SIDE CLAMPING CHUCK

NO.2022-02





COMPANY INTRODUCTION





品質創造信譽 信譽保證品質

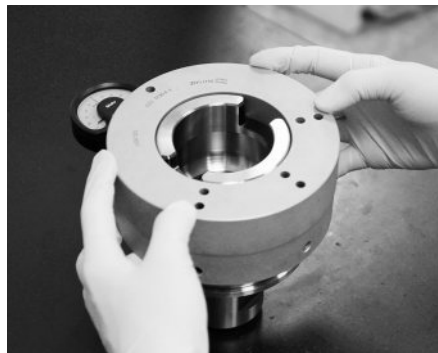
Quality creates reputation; reputation ensures quality.

About SYIC

Established in 1979, SYIC is a professional manufacturer of precise tool holders, cutting tools, angel heads, boring series and collets with more than 500 employees. The taper types of tool holders we manufacture include BT (MAS403), CAT (ANSI B5.50), DAT (DIN69871-A), HSK (DIN69893), PSC (ISO26623-1), VDI (DIN ISO10889) and straight shank holders.

SYIC is certified to ISO9001 and ISO14001. With contribution to the design, production and sale of high accuracy and inventive products, SYIC has over 300 pieces of patents worldwide. SYIC keeps investing in high-end equipment and measuring instruments from Japan and Europe to implement excellent quality control and manufacturing capability.

SYIC keeps the core value "Quality creates reputation; reputation ensures quality" to impress our customers, possessing professional technical skills to provide comprehensive solutions for customers, improving customers' machining efficiency, and enhancing the mutual competitiveness with customers. Based on the mission of "Excellent service, supreme quality," SYIC will continue to launch more high precision products to customers.



Tool Holders

Your reliable partner!

————— CNC turning, milling and grinding —————

BMT
PSC
HSK
SBT
SCAT
SDAT

Premium
Quality

www.syic.com

供需平衡 共榮共存

Maintain the balance of suppliers and customers and grow together.

未來之路 無限寬廣

Create a great future with infinite opportunities.

營運獲利 永續經營

Run a profitable company with sustainable development.

合作到底 共創通贏

Keep everlasting cooperation and together create a win-win situation.

成就彼此 榮耀一切

Support each other and accomplish mutual success.



Innovation is our mission!

SYIC is committed to developing high precision products to optimize the machining process and offering professional technical service. With experienced technical professionals, our products are developed in response to different types of industries. We aim to achieve customers' demands from different industries including machining industry, mold and die industry, aerospace industry, automotive industry, and energy industry. We offer the most professional and technical service, effectively resolve your machining problems to create maximum production efficiency.

USC ULTIMATE SIDE CLAMPING CHUCK

<u>USC ULTIMATE SIDE CLAMPING CHUCK [SBL TYPE]</u>	<u>9</u>
<u>USC ULTIMATE SIDE CLAMPING CHUCK [EBL TYPE]</u>	<u>10</u>
<u>USC ULTIMATE SIDE CLAMPING CHUCK [SFS TYPE]</u>	<u>11</u>
<u>ACCESSORIES</u>	<u>12</u>



USC ULTIMATE SIDE CLAMPING CHUCK

1 Quick tool change

- ▶ **Clamp/Unclamp** from the side. Quick tool change!
- ▶ Internal **gear** design, which drives the collet to change the tool.



Option:



2 Machining Rigidity ↑

The **enlarged neck** of the tool holder improves machining rigidity.

3 Reducing Interference

The USC design **w/o nut** is good for interference reduction.

4 Center Coolant Available

Effectively removes metal chips, extends tool life and improves surface finish of workpiece.

5 Balance

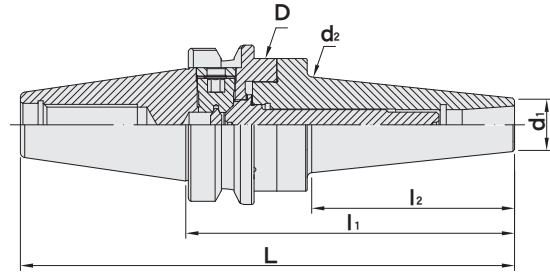
G2.5 25,000RPM

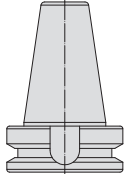
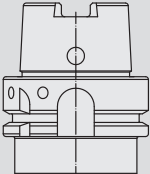
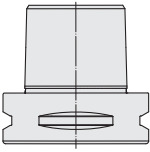


USC ULTIMATE SIDE CLAMPING CHUCK

USC 進化型側邊鎖固刀桿

(SBL TYPE)



SHANK	MODEL NO.	TYPE	L	l ₁	l ₂	D	d ₁	d ₂	SIZE RANGE	WEIGHT (KGS)
 DualDRIVE+	5025-749-012-130	SBT30 x USC12L - 130	178.4	130	60	52.4	26	31.2	3~12	1.95
	5026-749-006-130	SBT40 x USC6L - 130	195.4	130	77.5	52.4	14	30.2	3 ~ 6	1.51
	5026-749-012-130	SBT40 x USC12L - 130	195.4	130	80	52.4	26	32.9	3 ~ 12	2.12
 DIN 69893 A	5073-749-006-160	HSK63A x USC6L - 160	192	160	77.5	52.4	14	30.2	3 ~ 6	1.61
	5073-749-012-160	HSK63A x USC12L - 160	192	160	80	52.4	26	32.9	3 ~ 12	2.31
 DIN ISO 26623-1	5143-749-006-130	PSC63 x USC6L - 130	168	130	57.5	52.4	14	26	3 ~ 6	1.82
	5143-749-012-130	PSC63 x USC12L - 130	168	130	60	52.4	26	31.2	3 ~ 12	2.31

Features:

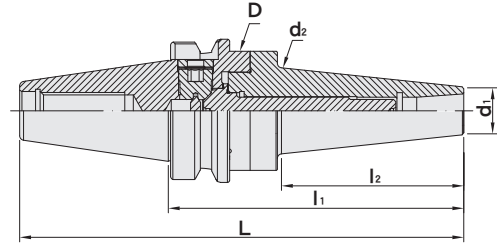
- ▶ Clamp and unclamp from the side. Quick tool change!
- ▶ The enlarged neck of the tool holder improves machining rigidity.
- ▶ The USC design w/o nut is good for interference reduction.
- ▶ USC is available with center coolant, which effectively removes metal chips, extends tool life and improves surface finish of workpiece.
- ▶ Balance: G2.5 25,000RPM.

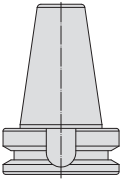
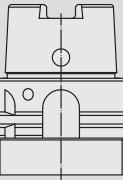
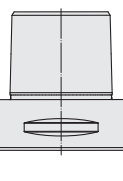


USC ULTIMATE SIDE CLAMPING CHUCK

USC 進化型側邊鎖固刀桿

(EBL TYPE)



SHANK	MODEL NO.	TYPE	L	l ₁	l ₂	D	d ₁	d ₂	SIZE RANGE	WEIGHT (KGS)
 DualDRIVE+	5026-747-006-150	SBT40 x USC6B - 150	215.4	150	97.2	52.4	19.05	28.5	3 ~ 6	1.63
	5026-747-006-200	SBT40 x USC6B - 200	265.4	200	150	52.4	19.05	33.7	3 ~ 6	1.86
 DIN 69893 A	5073-747-006-150	HSK63A x USC6B - 150	182	150	67.2	52.4	19.05	25.6	3 ~ 6	1.73
	5073-747-006-200	HSK63A x USC6B - 200	232	200	117.2	52.4	19.05	30.5	3 ~ 6	1.96
 DIN ISO 26623-1	5143-747-006-150	PSC63 x USC6B - 150	188	150	77.2	52.4	19.05	26.6	3 ~ 6	1.84
	5143-747-006-200	PSC63 x USC6B - 200	238	200	129.1	52.4	19.05	31.6	3 ~ 6	2.07

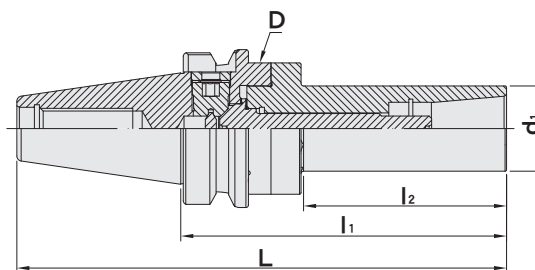
Features:

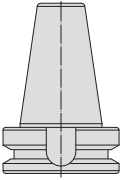
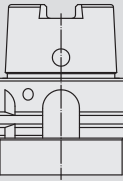
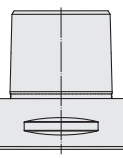
- ▶ Clamp and unclamp from the side. Quick tool change!
- ▶ The enlarged neck of the tool holder improves machining rigidity.
- ▶ The USC design w/o nut is good for interference reduction.
- ▶ USC is available with center coolant, which effectively removes metal chips, extends tool life and improves surface finish of workpiece.
- ▶ Balance: G2.5 25,000RPM.

USC ULTIMATE SIDE CLAMPING CHUCK

USC 進化型側邊鎖固刀桿

[SFS TYPE]



SHANK	MODEL NO.	TYPE	L	l ₁	l ₂	D	d ₁	WEIGHT (KGS)
 DualDRIVE+	5026-750-012-150	SBT40 x USC12S - 150	215.4	150	101	52.4	34	1.51
 DIN 69893 A	5073-750-012-150	HSK63A x USC12S - 150	182	150	97	52.4	34	1.61
 DIN ISO 26623-1	5143-750-012-150	PSC63 x USC12S - 150	188	150	81	52.4	34	1.82

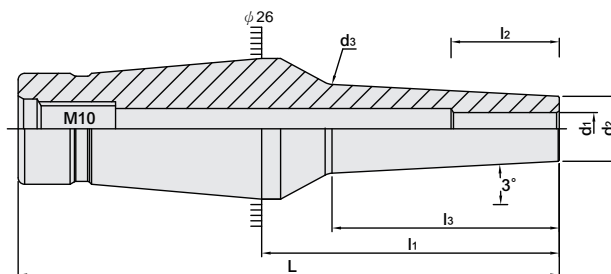
Features:

- ▶ Clamp and unclamp from the side. Quick tool change!
- ▶ The enlarged neck of the tool holder improves machining rigidity.
- ▶ The USC design w/o nut is good for interference reduction.
- ▶ USC is available with center coolant, which effectively removes metal chips, extends tool life and improves surface finish of workpiece.
- ▶ Balance: G2.5 25,000RPM.



SFS SLIM-FIT SHRINK EXTENSION

SFS 熱膨脹延長桿



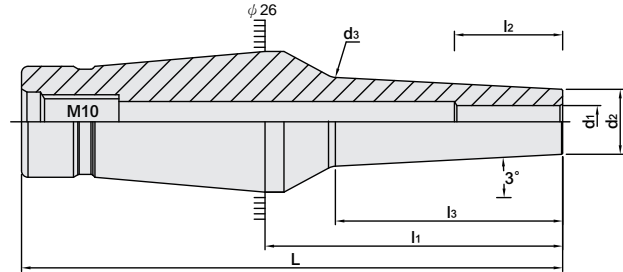
MODEL NO.	TYPE	L	l ₁	l ₂	l ₃	d ₁	d ₂	d ₃	WEIGHT (KGS)
5272-780-01203-035	SFS12 x 3mm - 35mm	80	35	10	22	3	6	8.3	0.16
5272-780-01203-055	SFS12 x 3mm - 55mm	100	55	10	42	3	6	10.4	0.17
5272-780-01203-080	SFS12 x 3mm - 80mm	125	80	10	67	3	6	13.0	0.20
5272-780-01203-110	SFS12 x 3mm - 110mm	155	110	10	97	3	6	16.2	0.23
5272-780-01204-035	SFS12 x 4mm - 35mm	80	35	10	22	4	7	9.3	0.16
5272-780-01204-055	SFS12 x 4mm - 55mm	100	55	10	42	4	7	11.4	0.18
5272-780-01204-080	SFS12 x 4mm - 80mm	125	80	10	67	4	7	14.0	0.20
5272-780-01204-110	SFS12 x 4mm - 110mm	155	110	10	97	4	7	17.2	0.24
5272-780-01206-035	SFS12 x 6mm - 35mm	80	35	20	22	6	9	11.3	0.17
5272-780-01206-055	SFS12 x 6mm - 55mm	100	55	20	42	6	9	13.4	0.18
5272-780-01206-080	SFS12 x 6mm - 80mm	125	80	20	67	6	9	16.2	0.21
5272-780-01206-110	SFS12 x 6mm - 110mm	155	110	20	97	6	9	19.2	0.26
5272-780-01208-035	SFS12 x 8mm - 35mm	80	35	26	22	8	11	13.3	0.17
5272-780-01208-055	SFS12 x 8mm - 55mm	100	55	26	42	8	11	15.4	0.19
5272-780-01208-080	SFS12 x 8mm - 80mm	125	80	26	67	8	11	18.0	0.23
5272-780-01208-110	SFS12 x 8mm - 110mm	155	110	26	97	8	11	21.2	0.29
5272-780-01210-035	SFS12 x 10mm - 35mm	80	35	32	22	10	13	15.3	0.17
5272-780-01210-055	SFS12 x 10mm - 55mm	100	55	32	42	10	13	17.4	0.20
5272-780-01210-080	SFS12 x 10mm - 80mm	125	80	32	67	10	13	20.0	0.24
5272-780-01210-110	SFS12 x 10mm - 110mm	155	110	32	97	10	13	23.2	0.32
5272-780-01212-035	SFS12 x 12mm - 35mm	80	35	37	22	12	15	17.3	0.17
5272-780-01212-055	SFS12 x 12mm - 55mm	100	55	37	42	12	15	19.4	0.20
5272-780-01212-080	SFS12 x 12mm - 80mm	125	80	37	67	12	15	22.0	0.26
5272-780-01212-110	SFS12 x 12mm - 110mm	155	110	37	97	12	15	25.2	0.35

Product information:

- ▶ Material: hot work die steel.

MFS SLIM-FIT SHRINK EXTENSION

MFS 熱膨脹延長桿



MODEL NO.	TYPE	L	l ₁	l ₂	l ₃	d ₁	d ₂	d ₃	WEIGHT (KGS)
5272-474-01203-035	MFS12R x 3mm - 35	80	35	10	22	3	7.5	9.8	0.2
5272-474-01203-055	MFS12R x 3mm - 55	100	55	10	42	3	7.5	11.9	0.2
5272-474-01203-080	MFS12R x 3mm - 80	125	80	10	67	3	7.5	14.5	0.2
5272-474-01204-035	MFS12R x 4mm - 35	80	35	10	22	4	10	12.3	0.2
5272-474-01204-055	MFS12R x 4mm - 55	100	55	10	42	4	10	14.4	0.2
5272-474-01204-080	MFS12R x 4mm - 80	125	80	10	67	4	10	17	0.2
5272-474-01206-035	MFS12R x 6mm - 35	80	35	20	22	6	12	14.3	0.2
5272-474-01206-055	MFS12R x 6mm - 55	100	55	20	42	6	12	16.4	0.2
5272-474-01206-080	MFS12R x 6mm - 80	125	80	20	67	6	12	19	0.2
5272-474-01208-035	MFS12R x 8mm - 35	80	35	26	22	8	14	16.3	0.2
5272-474-01208-055	MFS12R x 8mm - 55	100	55	26	42	8	14	18.4	0.2
5272-474-01208-080	MFS12R x 8mm - 80	125	80	26	67	8	14	21	0.3
5272-474-01210-035	MFS12R x 10mm - 35	80	35	32	22	10	16	18.3	0.2
5272-474-01210-055	MFS12R x 10mm - 55	100	55	32	42	10	16	20.4	0.2
5272-474-01210-080	MFS12R x 10mm - 80	125	80	32	67	10	16	23	0.3
5272-474-01212-035	MFS12R x 12mm - 35	80	35	37	22	12	20	22.3	0.2
5272-474-01212-055	MFS12R x 12mm - 55	100	55	37	42	12	20	24.4	0.2
5272-474-01212-080	MFS12R x 12mm - 80	125	80	37	67	12	20	25.4	0.3

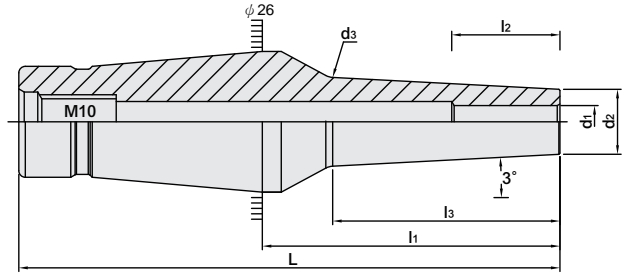
Product information:

- ▶ Material: heat resistant steel.



MFS SLIM-FIT SHRINK EXTENSION

MFS 熱膨脹延長桿



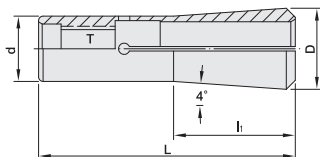
MODEL NO.	TYPE	L	l ₁	l ₂	l ₃	d ₁	d ₂	d ₃	WEIGHT (KGS)
5272-473-01203-035	MFS12S x 3mm - 35	80	35	10	22	3	6	8.3	0.16
5272-473-01203-055	MFS12S x 3mm - 55	100	55	10	42	3	6	10.4	0.17
5272-473-01203-080	MFS12S x 3mm - 80	125	80	10	67	3	6	13.0	0.20
5272-473-01203-110	MFS12S x 3mm - 110	155	110	10	97	3	6	16.2	0.23
5272-473-012A08-138	MFS12S x 3.175mm - 35	80	35	10	22	3.175	6.175	8.5	0.16
5272-473-012A08-217	MFS12S x 3.175mm - 55	100	55	10	42	3.175	6.175	10.6	0.17
5272-473-012A08-315	MFS12S x 3.175mm - 80	125	80	10	67	3.175	6.175	13.2	0.19
5272-473-012A08-433	MFS12S x 3.175mm - 110	155	110	10	97	3.175	6.175	16.3	0.23
5272-473-01204-035	MFS12S x 4mm - 35	80	35	10	22	4	7	9.3	0.16
5272-473-01204-055	MFS12S x 4mm - 55	100	55	10	42	4	7	11.4	0.18
5272-473-01204-080	MFS12S x 4mm - 80	125	80	10	67	4	7	14.0	0.20
5272-473-01204-110	MFS12S x 4mm - 110	155	110	10	97	4	7	17.2	0.24
5272-473-01206-035	MFS12S x 6mm - 35	80	35	20	22	6	9	11.3	0.17
5272-473-01206-055	MFS12S x 6mm - 55	100	55	20	42	6	9	13.4	0.18
5272-473-01206-080	MFS12S x 6mm - 80	125	80	20	67	6	9	16.2	0.21
5272-473-01206-110	MFS12S x 6mm - 110	155	110	20	97	6	9	19.2	0.26
5272-473-01208-035	MFS12S x 8mm - 35	80	35	26	22	8	11	13.3	0.17
5272-473-01208-055	MFS12S x 8mm - 55	100	55	26	42	8	11	15.4	0.19
5272-473-01208-080	MFS12S x 8mm - 80	125	80	26	67	8	11	18.0	0.23
5272-473-01208-110	MFS12S x 8mm - 110	155	110	26	97	8	11	21.2	0.29
5272-473-01210-035	MFS12S x 10mm - 35	80	35	32	22	10	13	15.3	0.17
5272-473-01210-055	MFS12S x 10mm - 55	100	55	32	42	10	13	17.4	0.20
5272-473-01210-080	MFS12S x 10mm - 80	125	80	32	67	10	13	20.0	0.24
5272-473-01210-110	MFS12S x 10mm - 110	155	110	32	97	10	13	23.2	0.32
5272-473-01212-035	MFS12S x 12mm - 35	80	35	37	22	12	15	17.3	0.17
5272-473-01212-055	MFS12S x 12mm - 55	100	55	37	42	12	15	19.4	0.20
5272-473-01212-080	MFS12S x 12mm - 80	125	80	37	67	12	15	22.0	0.26
5272-473-01212-110	MFS12S x 12mm - 110	155	110	37	97	12	15	25.2	0.35

Product information:

- Material: heat resistant steel.

SLC COLLET

SLC 專用筒夾



TYPE	D	d	L	l ₁	T	WEIGHT (KGS)
SLC - 6	10	8	36	24	M6	0.02
SLC - 8	15	12	51.5	22.2	M8	0.03
SLC - 12	18	14.5	57	25.45	M10	0.04
SLC - 20	27	21	70	35	M12	0.12
SLC - 25	32.4	25	80	43.5	M16	0.16

SLC - 6		SLC - 12		SLC - 20		SLC - 25	
MODEL NO.	SIZE	MODEL NO.	SIZE	MODEL NO.	SIZE	MODEL NO.	SIZE
5250-S37-006-003	3	5250-S37-012-003	3	5250-S37-020-003	3	5250-S37-025-006	6
5250-S37-006-004	4	5250-S37-012-004	4	5250-S37-020-004	4	5250-S37-025-008	8
5250-S37-006-005	5	5250-S37-012-005	5	5250-S37-020-005	5	5250-S37-025-010	10
5250-S37-006-006	6	5250-S37-012-006	6	5250-S37-020-006	6	5250-S37-025-012	12
<i>INCHES</i>		5250-S37-012-008	8	5250-S37-020-008	8	5250-S37-025-016	16
5250-S37-006-A08	1/8	5250-S37-012-010	10	5250-S37-020-010	10	5250-S37-025-018	18
5250-S37-006-A12	3/16	5250-S37-012-012	12	5250-S37-020-012	12	5250-S37-025-020	20
5250-S37-006-A16	1/4	<i>INCHES</i>		5250-S37-020-016	16	5250-S37-025-025	25
SLC - 8		5250-S37-012-A08	1/8	5250-S37-020-018	18	<i>INCHES</i>	
MODEL NO.	SIZE	5250-S37-012-A12	3/16	5250-S37-020-020	20	5250-S37-025-A16	1/4
5250-S37-008-003	3	5250-S37-012-A16	1/4	<i>INCHES</i>		5250-S37-025-A20	5/16
5250-S37-008-004	4	5250-S37-012-A20	5/16	5250-S37-020-A08	1/8	5250-S37-025-A24	3/8
5250-S37-008-005	5	5250-S37-012-A24	3/8	5250-S37-020-A12	3/16	5250-S37-025-A28	7/16
5250-S37-008-006	6	5250-S37-012-A28	7/16	5250-S37-020-A16	1/4	5250-S37-025-A32	1/2
5250-S37-008-008	8	5250-S37-012-A32	1/2	5250-S37-020-A20	5/16	5250-S37-025-A40	5/8
<i>INCHES</i>				5250-S37-020-A24	3/8	5250-S37-025-A48	3/4
5250-S37-008-A08	1/8			5250-S37-020-A28	7/16	5250-S37-025-A56	7/8
5250-S37-008-A12	3/16			5250-S37-020-A32	1/2	5250-S37-025-A64	1
5250-S37-008-A16	1/4			5250-S37-020-A40	5/8		
5250-S37-008-A20	5/16			5250-S37-020-A48	3/4		

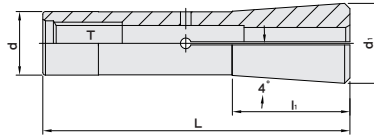
Features:

- ▶ Runout accuracy: 5µm.
- ▶ Surface roughness: Ra < 0.1µm.
- ▶ Used for SBL collet chuck.



EBL COLLET

EBL 筒夾



TYPE	L	l ₁	d	d ₁	T
EBL - 6	53	15	8.5	10.5	M6
EBL - 8	58	22.2	12	15.09	M8

EBL - 6		EBL - 8	
MODEL NO.	SIZE	MODEL NO.	SIZE
5250-277-006-003	3	5250-277-008-003	3
5250-277-006-004	4	5250-277-008-004	4
5250-277-006-005	5	5250-277-008-005	5
5250-277-006-006	6	5250-277-008-006	6
INCHES		INCHES	
5250-277-006-A08	1/8	5250-277-008-A08	1/8
5250-277-006-A12	3/16	5250-277-008-A12	3/16
5250-277-006-A16	1/4	5250-277-008-A16	1/4
		5250-277-008-A20	5/16

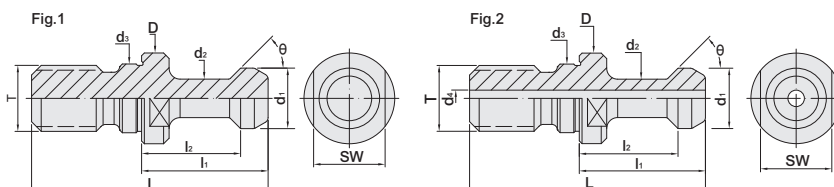
Features:

- ▶ Runout accuracy: 5µm.
- ▶ The extended length of EBL collet and special longer inner hole design of holder allow deeper tool insertion and shorter tool overhanging length, improving the machining stability.
- ▶ Used for tools without coolant holes.



BT PULL STUD

BT 螺栓拉頭



W/O Coolant

MODEL NO.	TYPE	L	l ₁	l ₂	D	d ₁	d ₂	d ₃	d ₄	θ	T	SW	Fig.	WEIGHT (KGS)
5230-010-45-00	BT30 - 45°	43	23	18	16.5	11	7	12.5	-	45°	M12	13	1	0.04
5230-011-45-00	BT40 - 45°	60	35	28	23	15	10	17	-	45°	M16	19	1	0.10
5230-012-45-00	BT50 - 45°	85	45	35	38	23	17	25	-	45°	M24	30	1	0.30
5230-010-60-00	BT30 - 60°	43	23	18	16.5	11	7	12.5	-	60°	M12	13	1	0.04
5230-011-60-00	BT40 - 60°	60	35	28	23	15	10	17	-	60°	M16	19	1	0.10
5230-012-60-00	BT50 - 60°	85	45	35	38	23	17	25	-	60°	M24	30	1	0.30
5230-010-90-00	BT30 - 90°	43	23	18	16.5	11	7	12.5	-	90°	M12	13	1	0.04
5230-011-90-00	BT40 - 90°	60	35	28	23	15	10	17	-	90°	M16	19	1	0.10
5230-012-90-00	BT50 - 90°	85	45	35	38	23	17	25	-	90°	M24	30	1	0.30

Coolant Thru

5231-010-45-00	BT30 - 45° - C	43	23	18	16.5	11	7	12.5	3	45°	M12	13	2	0.10
5231-011-15-00	BT40 - 15° - C	54	29	23	23	19	14	17	7	15°	M16	19	2	0.10
5231-011-45-00	BT40 - 45° - C	60	35	28	23	15	10	17	4	45°	M16	19	2	0.10
5231-011-45-01	BT40 - 45° - C - MAZAK	44.1	19.1	14.02	22	18.79	12.44	17	7	45°	M16	19	2	0.10
5231-012-45-00	BT50 - 45° - C	85	45	35	38	23	17	25	5	45°	M24	30	2	0.30
5231-012-45-01	BT50 - 45° - C - MAZAK	65.4	25.4	17.78	35.5	28.95	20.8	25	10	45°	M24	30	2	0.30
5231-011-60-00	BT40 - 60° - C	60	35	28	23	15	10	17	4	60°	M16	19	2	0.10
5231-012-60-00	BT50 - 60° - C	85	45	35	38	23	17	25	5	60°	M24	30	2	0.30
5231-011-90-00	BT40 - 90° - C	60	35	28	23	15	10	17	4	90°	M16	19	2	0.10
5231-012-90-00	BT50 - 90° - C	85	45	35	38	23	17	25	5	90°	M24	30	2	0.30

SPANNER

T型扳手 / Allen Wrench



Fig.1 Torx wrench

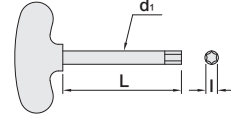
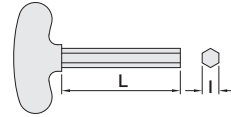


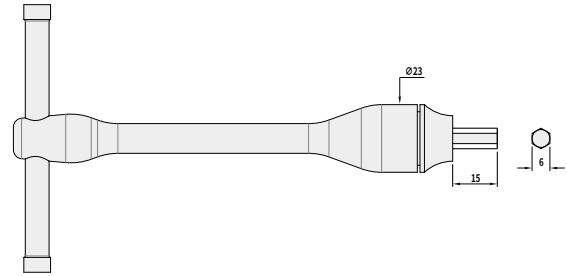
Fig.2 Allen wrench



MODEL NO.	TYPE	d ₁	L	l	Fig	WEIGHT (KGS)
210-003-200-001	T20 - 100	3.9	100	T20	1	0.04
210-003-200-003	T20 - 200	3.9	200	T20	1	0.04
210-003-200-004	T20 - 200	6	200	T20	1	0.04
210-003-050-005	T5 - 150	-	150	5	2	0.06
210-003-050-004	T5 - 200	-	200	5	2	0.06
210-003-060-003	T6 - 150	-	150	6	2	0.08
210-003-060-004	T6 - 200	-	200	6	2	0.10
210-003-080-002	T8 - 200	-	200	8	2	0.14
210-003-100-003	T10 - 200	-	200	10	2	0.16

FIXED VALUE TORQUE WRENCH

定壓式扭力板手



MODEL NO.	TYPE	RECOMMENDED TORQUE	WEIGHT (KGS)
5283-748-006	1-MT-TTDR-V104T12	10 N-m	0.19



Features:

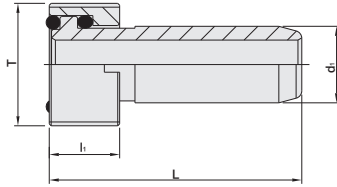
- ▶ USC Ultimate Side Clamping Chuck is delivered with a regular allen wrench. The fixed value torque wrench is optionally available.
- ▶ Using recommended torque to clamp the tool is helpful for USC chuck to maintain the best cutting performance.



COOLANT SUPPLY UNIT & KEY

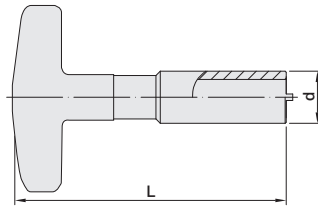
HSK 給水管 / HSK COOLANT SUPPLY UNIT

[DIN 69895]



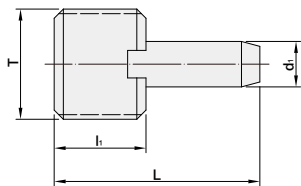
MODEL NO.	TYPE	L	li	di	T	WEIGHT (KGS)
5316-2032	HSK32A - CP	26	5.5	6	M10 x 1.0P	0.01
5316-2040	HSK40A - CP	29.3	7.5	8	M12 x 1.0P	0.01
5316-2050	HSK50A - CP	33	9.5	10	M16 x 1.0P	0.02
5316-2063	HSK63A - CP	36.6	11.5	12	M18 x 1.0P	0.02
5316-2080	HSK80A - CP	40	13.5	14	M20 x 1.5P	0.04
5316-2100	HSK100A - CP	44	15.5	16	M24 x 1.5P	0.06

HSK 給水管扳手 / KEY FOR HSK COOLANT SUPPLY UNIT



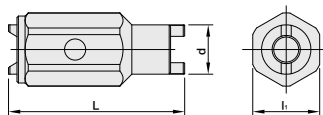
MODEL NO.	TYPE	L	d	WEIGHT (KGS)
5280-070-032	HSK32A - CPW	90	Ø10mm	0.10
5280-071-040	HSK40A - CPW	90	Ø13.5mm	0.12
5280-072-050	HSK50A - CPW	95	Ø15.5mm	0.14
5280-073-063	HSK63A - CPW	100	Ø17.5mm	0.16
5280-074-080	HSK80A - CPW	110	Ø19.5mm	0.12
5280-075-100	HSK100A - CPW	125	Ø23.5mm	0.32

PSC 給水管 / PSC COOLANT SUPPLY UNIT



MODEL NO.	TYPE	L	li	di	T	WEIGHT (KGS)
5316-1032	PSC32	22.4	10	4.95	M12 x 1.5P	0.01
5316-1040	PSC40	25.8	12	5.95	M14 x 1.5P	0.015
5316-1050	PSC50	28.35	14	7	M16 x 1.5P	0.026
5316-1063	PSC63	31	15	8	M20 x 2.0P	0.027
5316-1080	PSC80	31.3	15	10	M20 x 2.0P	0.07

PSC 給水管扳手 / KEY FOR PSC COOLANT SUPPLY UNIT



MODEL NO.	TYPE	L	li	d	WEIGHT (KGS)
5280-501-032	PSC32	40	14	10	0.03
5280-501-040	PSC40	45	17	12	0.051
5280-501-050	PSC50	50	19	14	0.071
5280-501-063	PSC63	60	25	17.5	0.16
5280-501-080	PSC80	60	29	17.5	0.22

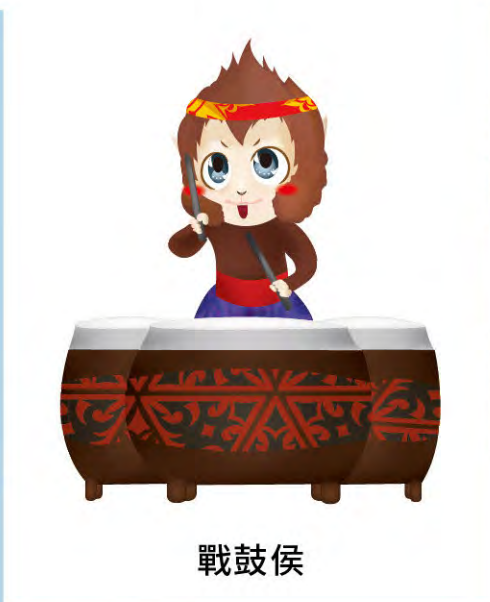
MEMO

Blank lined area for writing the memo content.

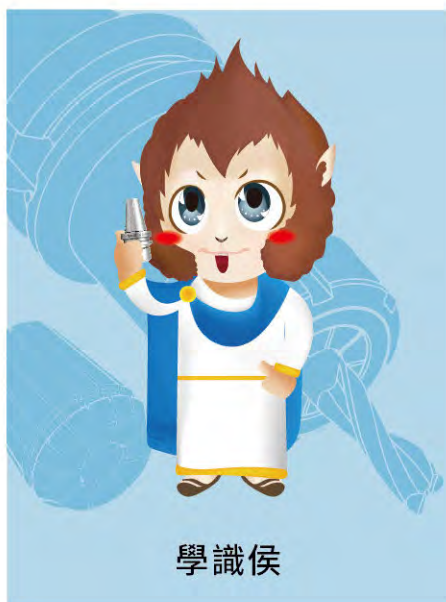




智能侯



戰鼓侯



學識侯



俠客侯



勝侯王



登山侯



慢跑侯



咖啡侯



鐵馬侯



www.syic.com

MEMO

Blank lined area for writing the memo content.



MEMO

Blank lined area for writing the memo content.





SHIN-YAIN INDUSTRIAL CO., LTD.

No.198, Jingpu Rd., Qingshui Dist., Taichung City 436, Taiwan
Tel: +886-4-26237575 | Fax: +886-4-26237676 | E-mail: sales@syic.com

