



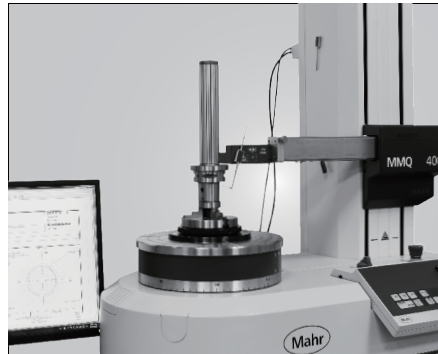
# GRINDING WHEEL HOLDER

NO.2022-03





# COMPANY INTRODUCTION





# 品質創造信譽 信譽保證品質

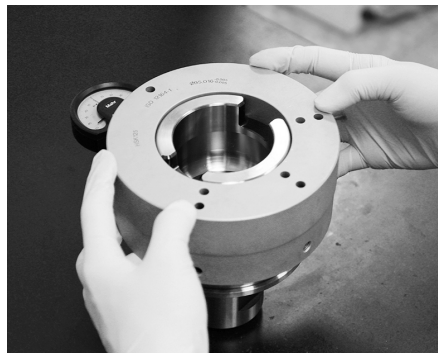
Quality creates reputation; reputation ensures quality.

## About SYIC

Established in 1979, SYIC is a professional manufacturer of precise tool holders, cutting tools, angel heads, boring series and collets with more than 500 employees. The taper types of tool holders we manufacture include BT (MAS403), CAT (ANSI B5.50), DAT (DIN69871-A), HSK (DIN69893), PSC (ISO26623-1), VDI (DIN ISO10889) and straight shank holders.

SYIC is certified to ISO9001 and ISO14001. With contribution to the design, production and sale of high accuracy and inventive products, SYIC has over 300 pieces of patents worldwide. SYIC keeps investing in high-end equipment and measuring instruments from Japan and Europe to implement excellent quality control and manufacturing capability.

SYIC keeps the core value "Quality creates reputation; reputation ensures quality" to impress our customers, possessing professional technical skills to provide comprehensive solutions for customers, improving customers' machining efficiency, and enhancing the mutual competitiveness with customers. Based on the mission of "Excellent service, supreme quality," SYIC will continue to launch more high precision products to customers.



# Tool Holders

**Your reliable partner!**

————— CNC turning, milling and grinding —————

BMT  
PSC  
HSK  
SBT  
SCAT  
SDAT

**Premium  
Quality**

[www.syic.com](http://www.syic.com)

供需平衡 共榮共存

Maintain the balance of suppliers and customers and grow together.

未來之路 無限寬廣

Create a great future with infinite opportunities.

營運獲利 永續經營

Run a profitable company with sustainable development.

合作到底 共創通贏

Keep everlasting cooperation and together create a win-win situation.

成就彼此 榮耀一切

Support each other and accomplish mutual success.



**Innovation is our mission!**

SYIC is committed to developing high precision products to optimize the machining process and offering professional technical service. With experienced technical professionals, our products are developed in response to different types of industries. We aim to achieve customers' demands from different industries including machining industry, mold and die industry, aerospace industry, automotive industry, and energy industry. We offer the most professional and technical service, effectively resolve your machining problems to create maximum production efficiency.

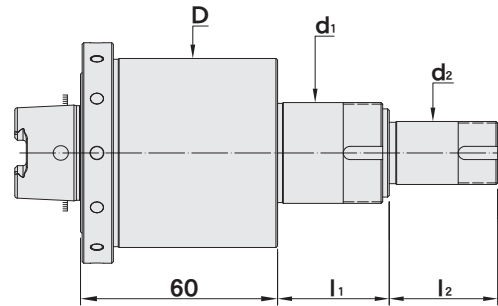
# GRINDING WHEEL HOLDER

GRINDING WHEEL HOLDER

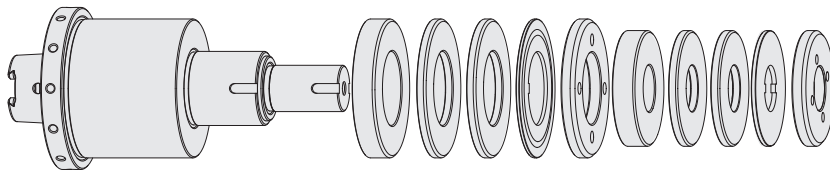
8~17

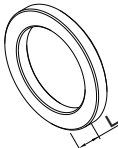
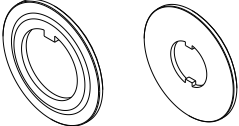
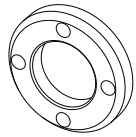
# GRINDING WHEEL HOLDER

砂輪軸刀桿



MODEL NO.	TYPE	$l_1$	$l_2$	D	$d_1$	$d_2$	HUB SPACER
5071-813-020-127	HSK40A x WTA322050 - 127	34	33	60	32	20	2xL=4, 1xL=10

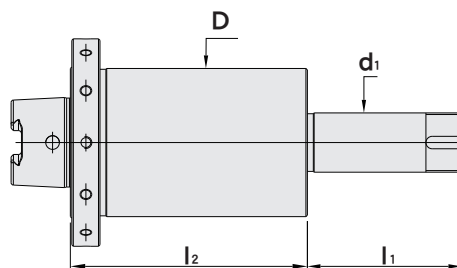


Hub spacer			Washer		Set nut	
						
MODEL NO.	TYPE	L	MODEL NO.	TYPE	MODEL NO.	TYPE
5296-12-020-05-04	Ø50 x Ø20 x 4	4	5296-13-020-07-02	Ø50 x Ø20 x 2	5296-14-020-06-02	Ø50 - M20 x 1.0P - 6
5296-12-020-05-05	Ø50 x Ø20 x 10	10	5296-13-032-07-01	Ø60 x Ø32 x 1.8	5296-14-032-06-01	Ø60 - M32 x 1.0P - 6
5296-12-020-05-06	Ø50 x Ø20 x 20	20				
5296-12-032-05-01	Ø60 x Ø32 x 4	4				
5296-12-032-05-02	Ø60 x Ø32 x 10	10				

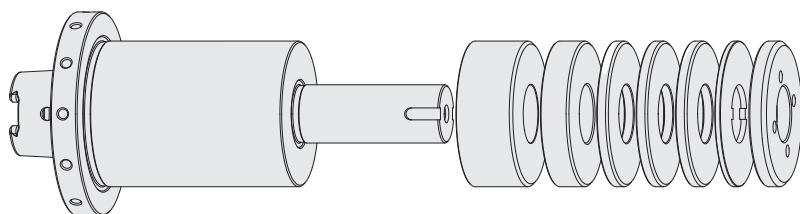


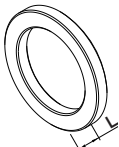

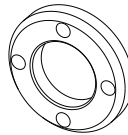
# GRINDING WHEEL HOLDER

砂輪軸刀桿



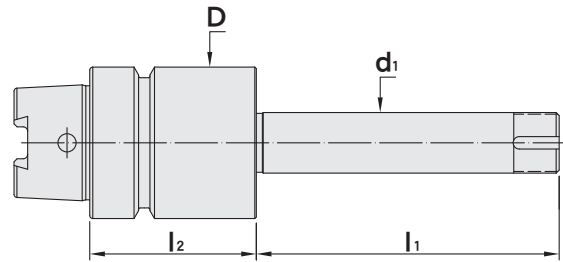
MODEL NO.	TYPE	l <sub>1</sub>	l <sub>2</sub>	D	d <sub>1</sub>	HUB SPACER
5071-813-020-132	HSK40A x WTA2050 - 132	52	80	50	20	3xL=4, 1xL=10, 1xL=2



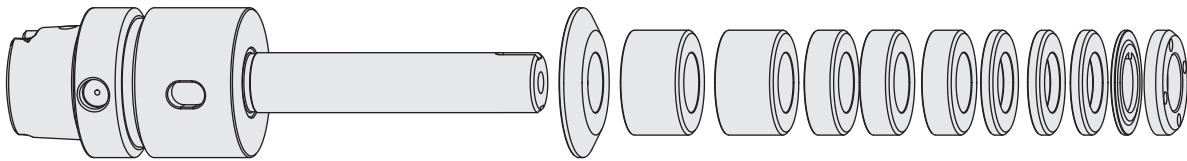
Hub spacer			Washer		Set nut	
						
MODEL NO.	TYPE	L	MODEL NO.	TYPE	MODEL NO.	TYPE
5296-12-020-05-04	Ø50 x Ø20 x 4	4	5296-13-020-07-02	Ø50 x Ø20 x 2	5296-14-020-06-02	Ø50 - M20 x 1.0P - 6
5296-12-020-05-05	Ø50 x Ø20 x 10	10				
5296-12-020-05-06	Ø50 x Ø20 x 20	20				

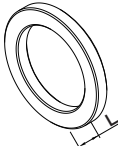
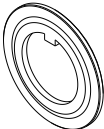

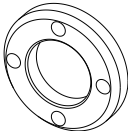
# GRINDING WHEEL HOLDER

砂輪軸刀桿



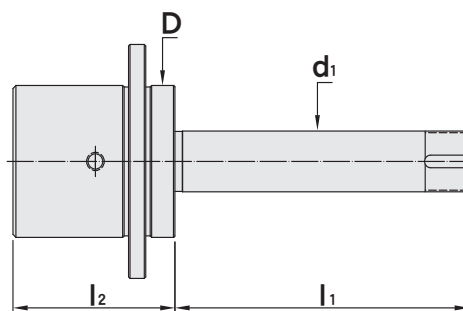
MODEL NO.	TYPE	l <sub>1</sub>	l <sub>2</sub>	D	d <sub>1</sub>	HUB SPACER
5072-814-020-155	HSK50A x WTB2035 - 155	100	55	50	20	3xL=4, 3xL=10, 2xL=20



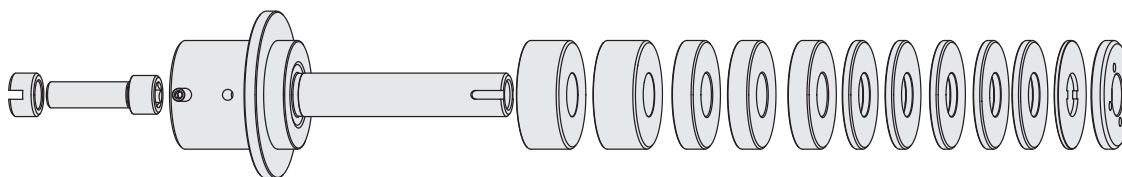
Hub spacer			Washer			Set nut		
								
MODEL NO.	TYPE	L	MODEL NO.	TYPE	MODEL NO.	TYPE	MODEL NO.	TYPE
5296-12-020-05-01	Ø35xØ20x4	4	5296-13-020-07-01	Ø35xØ20x2	5296-13-020-07-03	Ø50xØ35xØ20x6	5296-14-020-06-01	Ø35-M20x1.0P-6
5296-12-020-05-02	Ø35xØ20x10	10						
5296-12-020-05-03	Ø35xØ20x20	20						

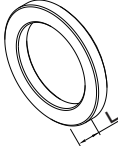
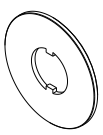
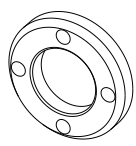
# GRINDING WHEEL HOLDER

砂輪軸刀桿



MODEL NO.	TYPE	l <sub>1</sub>	l <sub>2</sub>	D	d <sub>1</sub>	HUB SPACER
5322-815-0201-100	NCT31.75 x WTN2035 - 100	100	55	50	20	3xL=4, 3xL=10, 2xL=20
5322-815-0202-100	NCT31.75 x WTN2050 - 100	100	55	50	20	3xL=4, 3xL=10, 2xL=20



Hub spacer			Washer		Set nut	
						
MODEL NO.	TYPE	L	MODEL NO.	TYPE	MODEL NO.	TYPE
5296-12-020-05-01	Ø35 x Ø20 x 4	4	5296-13-020-07-01	Ø35 x Ø20 x 2	5296-14-020-06-01	Ø35 - M20 x 1.0P - 6
5296-12-020-05-02	Ø35 x Ø20 x 10	10	5296-13-020-07-02	Ø50 x Ø20 x 2	5296-14-020-06-02	Ø50 - M20 x 1.0P - 6
5296-12-020-05-03	Ø35 x Ø20 x 20	20				
5296-12-020-05-04	Ø50 x Ø20 x 4	4				
5296-12-020-05-05	Ø50 x Ø20 x 10	10				
5296-12-020-05-06	Ø50 x Ø20 x 20	20				

# GRINDING WHEEL HOLDER

## 砂輪軸刀桿



Fig.1

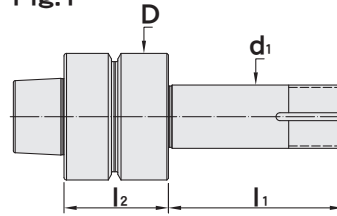
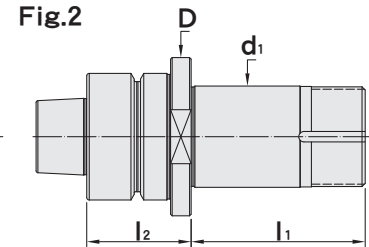
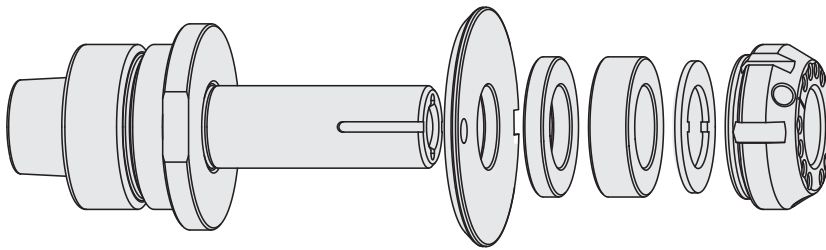
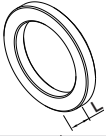
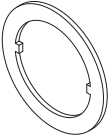

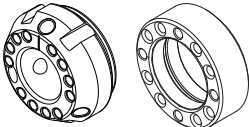


Fig.2



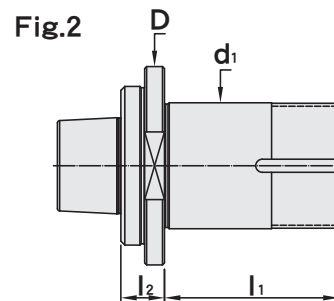
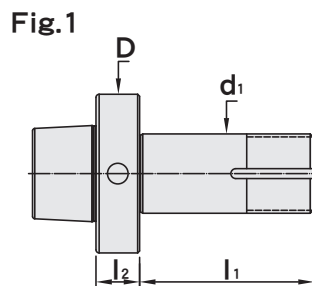
MODEL NO.	TYPE	d <sub>1</sub>	D	l <sub>1</sub>	l <sub>2</sub>	HUB SPACER	Fig
5098-017-020-S00	HSK32E x OD20 - 55	20	45	55	33	1xL=5, 1xL=10	1
5098-017-020-S01	HSK32E x OD20 - 72	20	45	72	33	1xL=5, 2xL=10	1
5098-017-020-S02	HSK32E x OD20 - 95	20	45	95	33	1xL=5, 2xL=10, 1xL=15	1
5098-016-032-S03	HSK32E x OD32 - 35	32	50	35	33	1xL=5	2
5098-016-032-S00	HSK32E x OD32 - 55	32	50	55	33	2xL=5, 1xL=10	2
5098-016-032-S01	HSK32E x OD32 - 72	32	50	72	33	2xL=5, 2xL=10	2
5098-016-032-S02	HSK32E x OD32 - 85	32	50	85	33	2xL=5, 1xL=10, 1xL=15	2
5098-016-A72-S00	HSK32E x OD31.75 - 35	31.75	50	35	33	1xL=5	2
5098-016-A72-S01	HSK32E x OD31.75 - 45	31.75	50	45	33	1xL=5	2
5098-016-A72-S02	HSK32E x OD31.75 - 55	31.75	50	55	33	1xL=5, 1xL=10	2
5098-016-A72-S03	HSK32E x OD31.75 - 72	31.75	50	72	33	1xL=5, 2xL=10	2
5098-016-A72-S04	HSK32E x OD31.75 - 85	31.75	50	85	33	1xL=5, 1xL=10, 1xL=15	2
5098-016-A72-S05	HSK32E x OD31.75 - 95	31.75	50	95	33	1xL=5, 2xL=10, 1xL=15	2



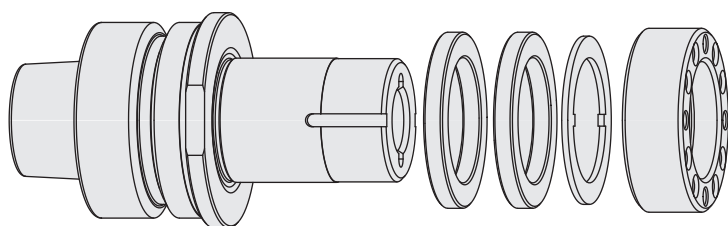
Hub spacer			Washer		Spacer		Set nut	
								
MODEL NO.	TYPE	L	MODEL NO.	TYPE	MODEL NO.	TYPE	MODEL NO.	TYPE
5296-003-3020-00	ID20 5	5	5296-003-6032-00	ID20 1.6 M/S	5296-026-1020-00	ID20 4	208-009-M200-000	M20 x 1.5P
5296-003-3020-01	ID20 10	10	5296-003-6032-00	ID32 / 31.75 1.6M/S	5296-026-1032-00	ID32 4	208-009-M31.50-000	M31.5 x 1.5P
5296-003-3020-02	ID20 15	15			5296-026-1A72-00	ID31.75 4		
5296-002-3032-00	ID32 5	5						
5296-002-3032-01	ID32 10	10						
5296-002-3032-02	ID32 15	15						
5296-002-3A72-00	ID31.75 5	5						
5296-002-3A72-01	ID31.75 10	10						
5296-002-3A72-02	ID31.75 15	15						


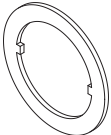


# GRINDING WHEEL HOLDER

## 砂輪軸刀桿



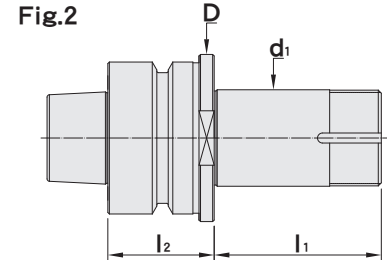
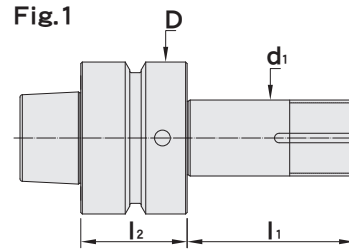
MODEL NO.	TYPE	d <sub>1</sub>	D	l <sub>1</sub>	l <sub>2</sub>	HUB SPACER	Fig
5106-022-020-S00	HSK40F x OD20 - 55	20	40	55	11	2xL=5, 1xL=10	1
5106-022-020-S01	HSK40F x OD20 - 72	20	40	72	11	2xL=5, 2xL=10	1
5106-022-020-S02	HSK40F x OD20 - 95	20	40	95	11	2xL=5, 2xL=10, 1xL=15	1
5106-022-032-S00	HSK40F x OD32 - 85	32	50	85	11	2xL=5, 1xL=10, 1xL=15	2
5106-022-A72-S00	HSK40F x OD31.75 - 35	31.75	50	35	11	1xL=5	2
5106-022-A72-S01	HSK40F x OD31.75 - 45	31.75	50	45	11	2xL=5	2
5106-022-A72-S02	HSK40F x OD31.75 - 55	31.75	50	55	11	2xL=5, 1xL=10	2
5106-022-A72-S03	HSK40F x OD31.75 - 72	31.75	50	72	11	2xL=5, 2xL=10	2
5106-022-A72-S04	HSK40F x OD31.75 - 85	31.75	50	85	11	2xL=5, 1xL=10, 1xL=15	2
5106-022-A72-S05	HSK40F x OD31.75 - 95	31.75	50	95	11	2xL=5, 2xL=10, 1xL=15	2



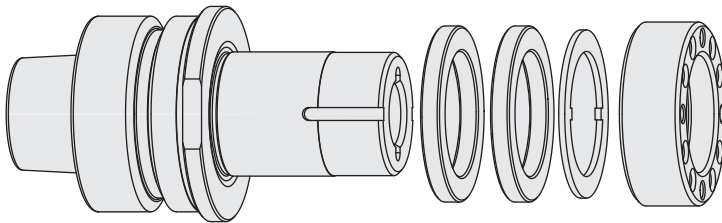
Hub spacer			Washer		Set nut	
						
MODEL NO.	TYPE	L	MODEL NO.	TYPE	MODEL NO.	TYPE
5296-003-3020-00	ID20 5	5	5296-003-6032-00	ID20 1.6 M/S	208-009-M200-000	M20x1.5P
5296-003-3020-01	ID20 10	10	5296-003-6032-00	ID32 / 31.75 1.6 M/S	208-009-M31.50-000	M31.5x1.5P
5296-003-3020-02	ID20 15	15				
5296-002-3032-00	ID32 5	5				
5296-002-3032-01	ID32 10	10				
5296-002-3032-02	ID32 15	15				
5296-002-3A72-00	ID31.75 5	5				
5296-002-3A72-01	ID31.75 10	10				
5296-002-3A72-02	ID31.75 15	15				

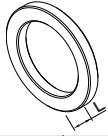
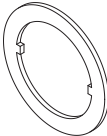


# GRINDING WHEEL HOLDER

## 砂輪軸刀桿



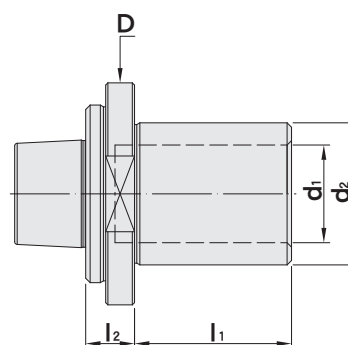
MODEL NO.	TYPE	d <sub>1</sub>	D	l <sub>1</sub>	l <sub>2</sub>	HUB SPACER	Fig
5102-019-020-S00	HSK50F x OD20 - 55	20	50	55	35	2xL=5, 1xL=10	1
5102-019-020-S01	HSK50F x OD20 - 72	20	50	72	35	2xL=5, 2xL=10	1
5102-019-020-S02	HSK50F x OD20 - 95	20	50	95	35	2xL=5, 2xL=10, 1xL=15	1
5102-019-032-S00	HSK50F x OD32 - 72	32	55	72	35	2xL=5, 2xL=10	2
5102-019-032-S01	HSK50F x OD32 - 95	32	55	95	35	2xL=5, 2xL=10, 1xL=15	2
5102-019-A72-S00	HSK50F x OD31.75 - 45	31.75	55	45	35	2xL=5	2
5102-019-A72-S01	HSK50F x OD31.75 - 55	31.75	55	55	35	2xL=5, 1xL=10	2
5102-019-A72-S02	HSK50F x OD31.75 - 72	31.75	55	72	35	2xL=5, 2xL=10	2
5102-019-A72-S03	HSK50F x OD31.75 - 85	31.75	55	85	35	2xL=5, 1xL=10, 1xL=15	2
5102-019-A72-S04	HSK50F x OD31.75 - 95	31.75	55	95	35	2xL=5, 2xL=10, 1xL=15	2



Hub spacer			Washer		Set nut	
						
MODEL NO.	TYPE	L	MODEL NO.	TYPE	MODEL NO.	TYPE
5296-003-3020-00	ID20 5	5	5296-003-6032-00	ID20 1.6 MS	208-009-M200-000	M20x1.5P
5296-003-3020-01	ID20 10	10	5296-003-6032-00	ID32 / 31.75 1.6 M/S	208-009-M31.50-000	M31.5x1.5P
5296-003-3020-02	ID20 15	15				
5296-002-3032-00	ID32 5	5				
5296-002-3032-01	ID32 10	10				
5296-002-3032-02	ID32 15	15				
5296-002-3A72-00	ID31.75 5	5				
5296-002-3A72-01	ID31.75 10	10				
5296-002-3A72-02	ID31.75 15	15				

# GRINDING WHEEL HOLDER

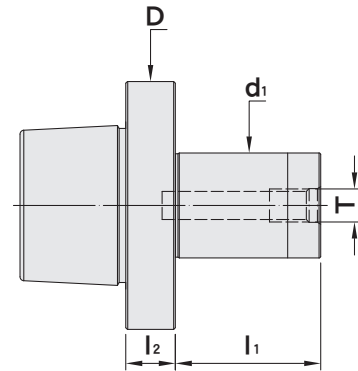
砂輪軸刀桿



MODEL NO.	TYPE	d <sub>1</sub>	d <sub>2</sub>	D	l <sub>1</sub>	l <sub>2</sub>
5098-040-032-136	HSK32E x OD32 - 136	22	32	50	125	11
5098-040-032-161	HSK32E x OD32 - 161	22	32	50	145	11

# GRINDING WHEEL HOLDER

砂輪軸刀桿

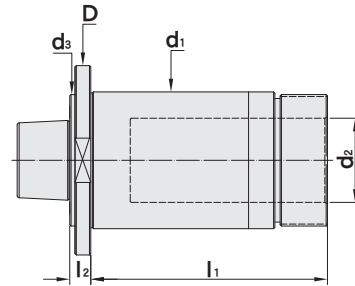


MODEL NO.	TYPE	$d_1$	D	$l_1$	$l_2$	T
5101-005-032-059	HSK63E x OD31.95 - 59	31.95	75	59	15	M10 x 1.5P
5101-005-A72-173	HSK63E x OD31.75 - 44	31.75	75	44	15	M10 x 1.5P
5101-004-040-057	HSK63E x OD40 - 57	40	75	45	12	M10 x 1.5P
5101-004-052-057	HSK63E x OD52 - 57	52	75	45	12	M10 x 1.5P



# GRINDING WHEEL HOLDER

砂輪軸刀桿



MODEL NO.	TYPE	d <sub>1</sub>	d <sub>2</sub>	d <sub>3</sub>	D	l <sub>1</sub>	l <sub>2</sub>
5102-004-052-035	HSK50F x OD52 - 35	52	32	50	72	55	8
5102-004-052-040	HSK50F x OD52 - 40	52	32	52	72	40	48
5102-034-052-050	HSK50F x OD52 - 50	52	32	50	72	50	8
5102-004-052-080	HSK50F x OD52 - 80	52	32	50	72	80	8
5102-004-052-090	HSK50F x OD52 - 90	52	32	50	72	90	8
5102-006-052-035	HSK50F x OD52 - 35	52	32	50	72	55	8
5102-006-052-090	HSK50F x OD52 - 90	52	32	50	72	110	8
5102-006-A64-138	HSK50F x OD25.4 - 35	25.4	10	50	45	55	13
5102-006-A64-276	HSK50F x OD25.4 - 70	25.4	10	50	45	90	13
5102-006-A72-138	HSK50F x OD31.75 - 35	31.75	16	50	55	52	13
5102-006-A72-276	HSK50F x OD31.75 - 70	31.75	16	50	55	87	13
5102-006-032-035	HSK50F x OD32 - 35	32	16	50	55	52	13
5102-006-032-070	HSK50F x OD32 - 70	32	16	50	55	87	13

# MEMO

Blank lined area for writing the memo content.



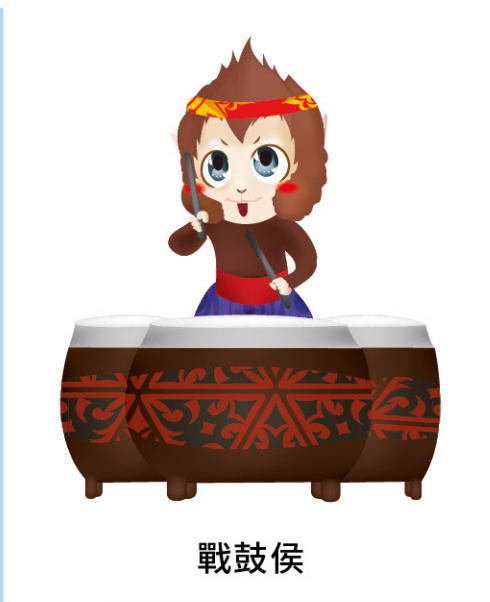
# MEMO

Blank lined area for writing the memo content.





智能侯



戰鼓侯



學識侯



俠客侯



勝侯王



登山侯



慢跑侯



咖啡侯



鐵馬侯



[www.syic.com](http://www.syic.com)