

# AWC JIG TOOLHOLDER CATEGORY

AWC JIG TOOL HOLDER

---

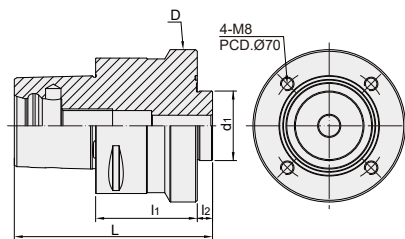
T-2~3

# AWC JIG TOOL HOLDER

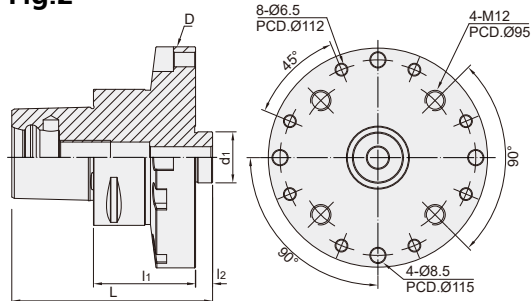
## AWC 治具刀桿



**Fig.1**



**Fig.2**



MODEL NO.	TYPE	L	l <sub>1</sub>	l <sub>2</sub>	D	d <sub>1</sub>	Fig.	WEIGHT (KGS)
5143-027-120-055	PSC63 x AWC120A - 55	103	55	10	120	30	2	2.92
5144-027-090-060	PSC80 x AWC90A - 60	117	60	9	90	41.06	1	3.6
5144-027-130-060	PSC80 x AWC130A - 60	118	60	10	130	30	2	4.3
5073-027-120-055	HSK63A x AWC120A - 55	97	55	10	120	30	2	2.42
5075-027-090-060	HSK100A x AWC90A - 60	119	60	9	90	41.06	1	3.2
5075-027-130-060	HSK100A x AWC130A - 60	120	60	10	130	30	2	4.6

**Fig.1**



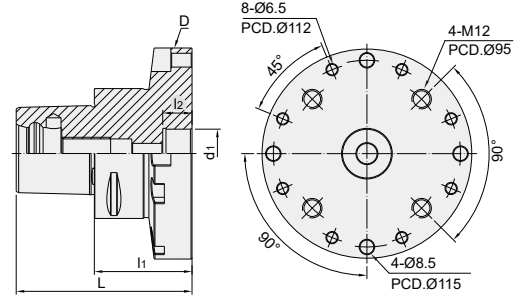
**Features:**

- ▶ Used for machining centers with quick positioning and clamping system.
- ▶ Workpiece can be pre-loaded in AWC jig tool holder and quickly changed during machining process to improve production efficiency.
- ▶ There are 3 different sizes of screw holes for clamping(Fig.2). Customization also acceptable.
- ▶ Using AWC JIG TOOL HOLDER to support automation systems can realize the processing needs of either batch production or flow production.



# AWC JIG TOOL HOLDER

## AWC 治具刀桿



MODEL NO.	TYPE	L	l <sub>1</sub>	l <sub>2</sub>	D	d <sub>1</sub>	WEIGHT (KGS)
5143-028-120-055	PSC63 x AWC 120B - 55	93	55	16	120	30	2.79
5144-028-130-060	PSC80 x AWC 130B - 60	108	60	16	130	30	4.2
5073-028-120-055	HSK63A x AWC 120B - 55	87	55	16	120	30	2.33
5075-028-130-060	HSK100A x AWC 130B - 60	110	60	16	130	30	4.5

**Features:**

- ▶ Used for machining centers with quick positioning and clamping system.
- ▶ Workpiece can be pre-loaded in AWC jig tool holder and quickly changed during machining process to improve production efficiency.
- ▶ There are 3 different sizes of screw holes for clamping. Customization also acceptable.
- ▶ Using AWC JIG TOOL HOLDER to support automation systems can realize the processing needs of either batch production or flow production.



# MEMO

Blank memo area consisting of 18 horizontal grey bars for writing.

