

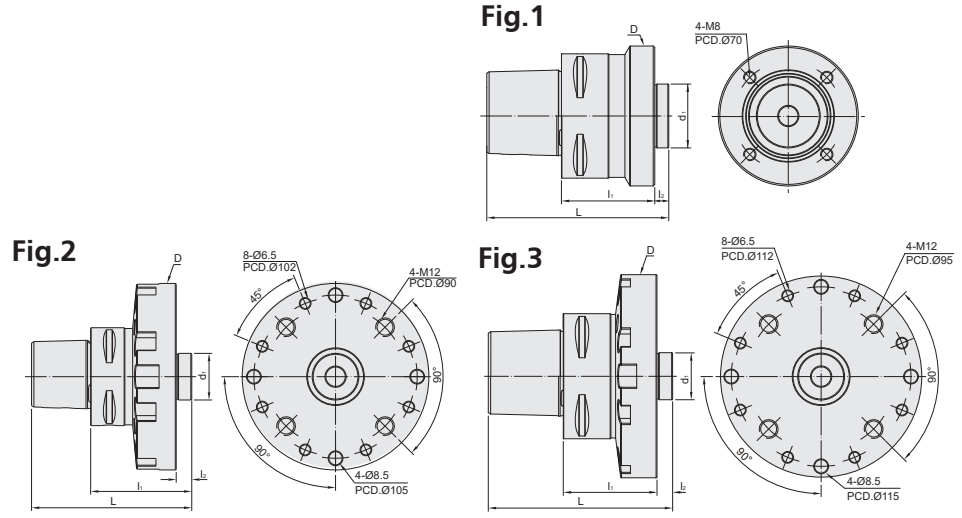
AWC JIG TOOLHOLDER CATEGORY

AWC JIG TOOL HOLDER

T-2~3

AWC JIG TOOL HOLDER

AWC 治具刀桿



MODEL NO.	TYPE	L	l ₁	l ₂	D	d ₁	Fig.	WEIGHT (KGS)
5143-027-120-055	PSC63 x AWC120A - 55	103	55	10	120	30	2	2.92
5144-027-090-060	PSC80 x AWC90A - 60	117	60	9	90	41.06	1	3.6
5144-027-130-060	PSC80 x AWC130A - 60	118	60	10	130	30	3	4.3
5073-027-120-055	HSK63A x AWC120A - 55	97	55	10	120	30	2	2.42
5075-027-090-060	HSK100A x AWC90A - 60	119	60	9	90	41.06	1	3.2
5075-027-130-060	HSK100A x AWC130A - 60	120	60	10	130	30	3	4.6

Fig.1



Features:

- ▶ Used for machining centers with quick positioning and clamping system.
- ▶ Workpiece can be pre-loaded in AWC jig tool holder and quickly changed during machining process to improve production efficiency.
- ▶ There are 3 different sizes of screw holes for clamping(Fig.2). Customization also acceptable.
- ▶ Using AWC JIG TOOL HOLDER to support automation systems can realize the processing needs of either batch production or flow production.



AWC JIG TOOL HOLDER

AWC 治具刀桿

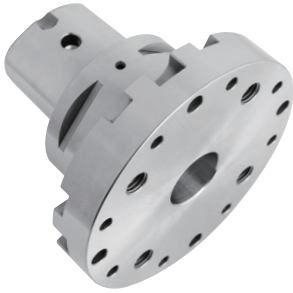


Fig.1

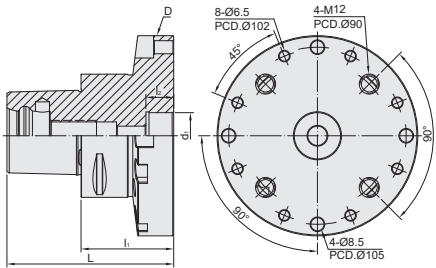
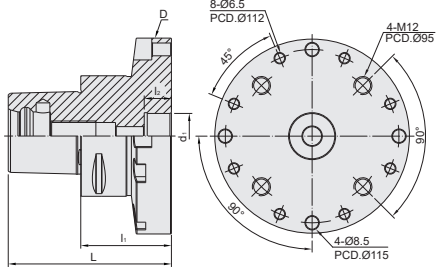


Fig.2



MODEL NO.	TYPE	L	l ₁	l ₂	D	d ₁	Fig.	WEIGHT (KGS)
5143-028-120-055	PSC63 x AWC120B - 55	93	55	16	120	30	1	2.79
5144-028-130-060	PSC80 x AWC130B - 60	108	60	16	130	30	2	4.2
5073-028-120-055	HSK63A x AWC120B - 55	87	55	16	120	30	1	2.33
5075-028-130-060	HSK100A x AWC130B - 60	110	60	16	130	30	2	4.5

Features:

- ▶ Used for machining centers with quick positioning and clamping system.
- ▶ Workpiece can be pre-loaded in AWC jig tool holder and quickly changed during machining process to improve production efficiency.
- ▶ There are 3 different sizes of screw holes for clamping. Customization also acceptable.
- ▶ Using AWC JIG TOOL HOLDER to support automation systems can realize the processing needs of either batch production or flow production.



MEMO

Blank lined area for writing a memo.

