



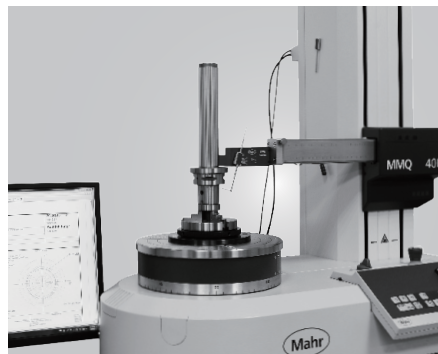
ASSEMBLY DEVICE

NO.2020-09





COMPANY INTRODUCTION





品質創造信譽 信譽保證品質

Quality creates reputation; reputation ensures quality.

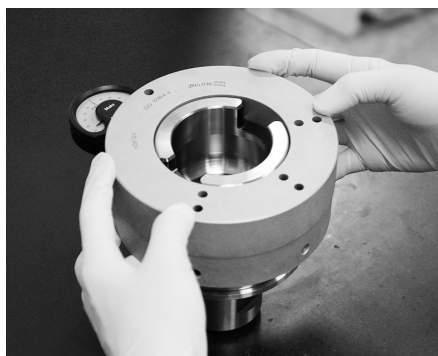
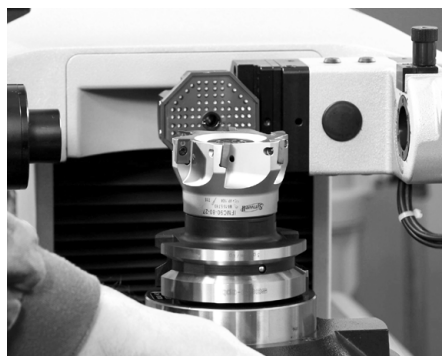
About SYIC

Established in 1979, SYIC is a professional manufacturer of precise tool holders, cutting tools, angel heads, boring series and collets with more than 500 employees. The taper types of tool holders we manufacture include BT (MAS403), CAT (ANSI B5.50), DAT (DIN69871-A), HSK (DIN69893), PSC (ISO26623-1), VDI (DIN ISO10889) and straight shank holders.

SYIC is certified to ISO9001 and ISO14001. With contribution to the design, production and sale of high accuracy and inventive products, SYIC has over 300 pieces of patents worldwide. SYIC keeps investing in high-end equipment and measuring instruments from Japan and Europe to implement excellent quality control and manufacturing capability.

SYIC keeps the core value "Quality creates reputation; reputation ensures quality" to impress our customers, possessing professional technical skills to provide comprehensive solutions for customers, improving customers' machining efficiency, and enhancing the mutual competitiveness with customers. Based on the mission of "Excellent service, supreme quality," SYIC will continue to launch more high precision products to customers.

N



Tool Holders

Your reliable partner!

————— CNC turning, milling and grinding —————



www.syic.com

供需平衡 共榮共存

Maintain the balance of suppliers and customers and grow together.

未來之路 無限寬廣

Create a great future with infinite opportunities.

營運獲利 永續經營

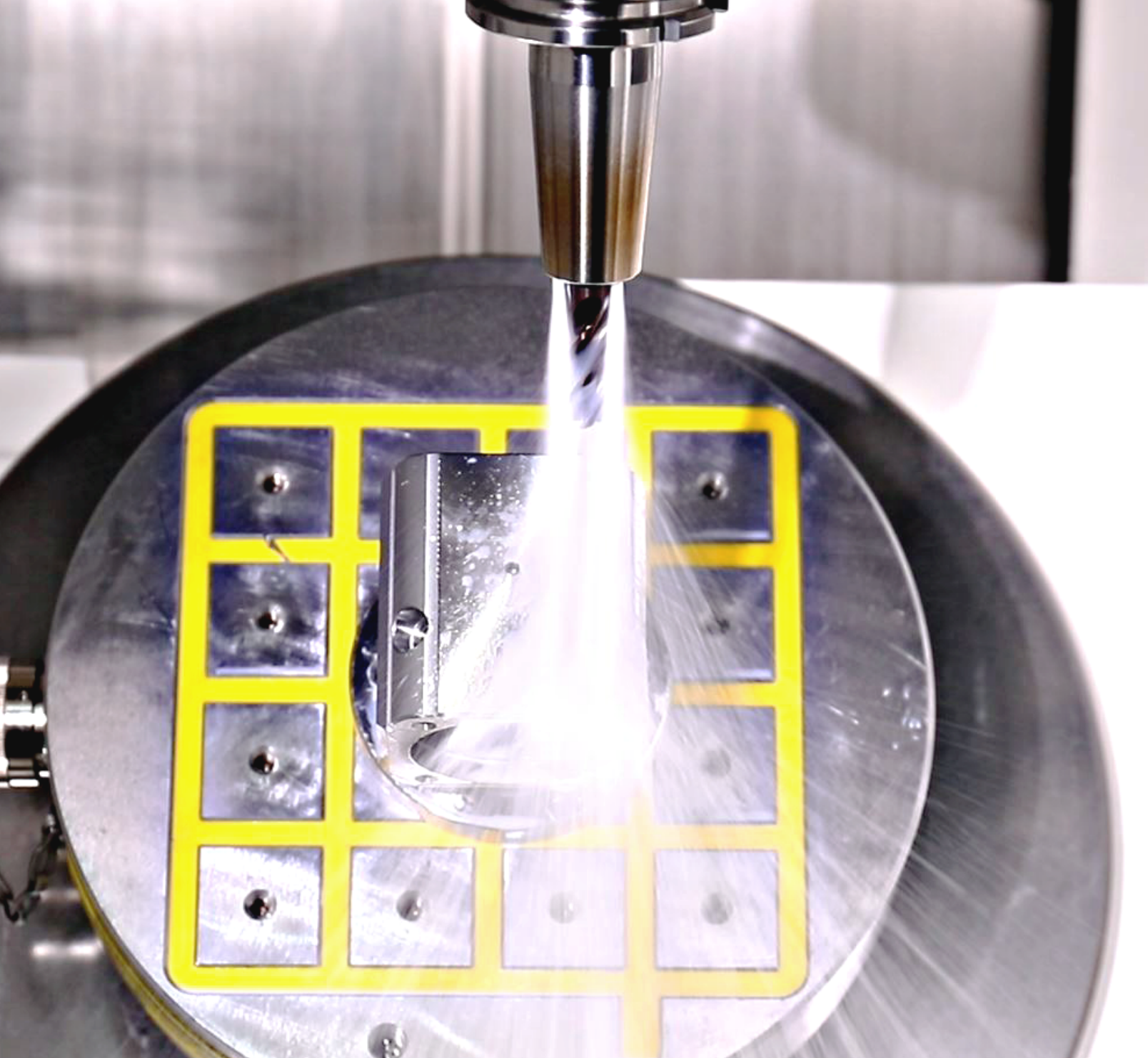
Run a profitable company with sustainable development.

合作到底 共創通贏

Keep everlasting cooperation and together create a win-win situation.

成就彼此 榮耀一切

Support each other and accomplish mutual success.



Innovation is our mission!

SYIC is committed to developing high precision products to optimize the machining process and offering professional technical service. With experienced technical professionals, our products are developed in response to different types of industries. We aim to achieve customers' demands from different industries including machining industry, mold and die industry, aerospace industry, automotive industry, and energy industry. We offer the most professional and technical service, effectively resolve your machining problems to create maximum production efficiency.



CASTING FOR ASSEMBLY DEVICE



ASSEMBLY DEVICE

STABLE

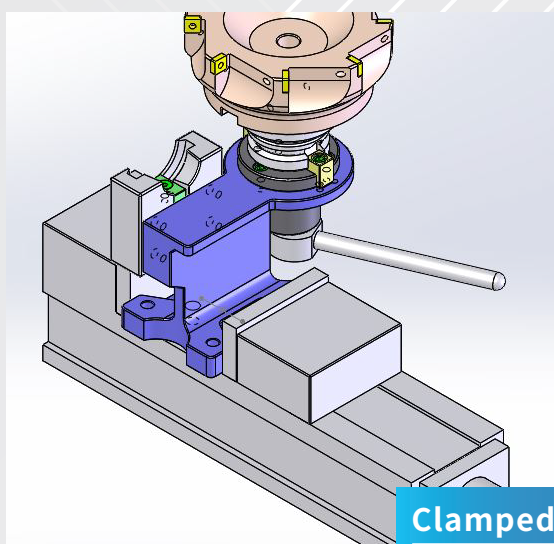
HIGH RIGIDITY

PATENTED DESIGN

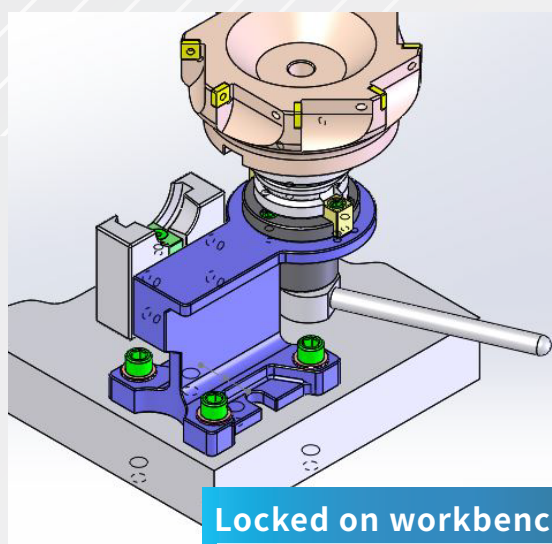


- ▶ Compatible with 7/24 DualDRIVE+ (Double face contact) tool holders.
- ▶ Precisely machined taper socket allows stable and firm holder mounting.
- ▶ Nodular-cast-iron base has strengthened rigidity.
- ▶ Superior performance for installing and uninstalling accessories in long-reach or heavy holders.

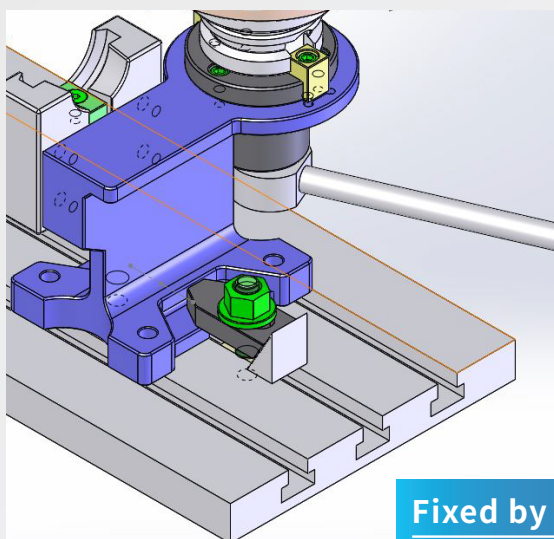
The design of bottom seat is patented, which can be fixed not only on the workbenches, but also in machines by vises or clamps. (Patent No. M595557)



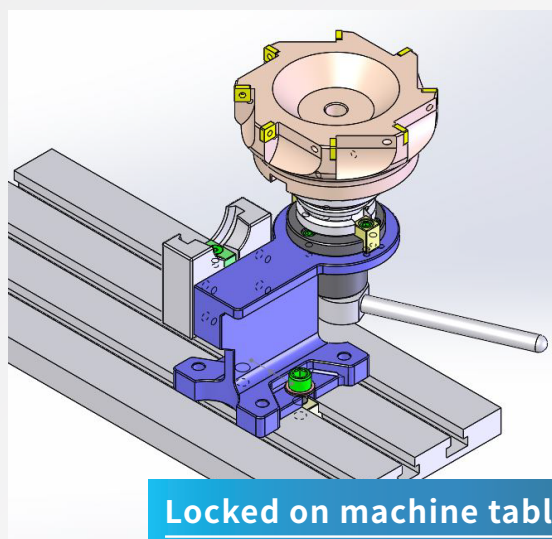
Clamped by vise



Locked on workbench



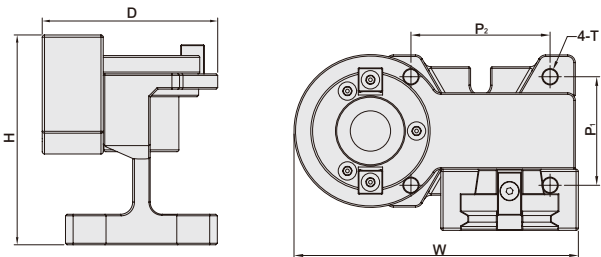
Fixed by clamp



Locked on machine table

ASSEMBLY DEVICE

鎖刀座



TW PAT NO. M595557

TWO - WAY TYPE 立臥式

MODEL NO.	TYPE	COMPATIBLE TOOLING	D	H	W	P ₁	P ₂	T	WEIGHT (KGS)
5300-020-010	AD - BT30 - HV	BT / SBT30	110	137.5	186	71	91	M8	4.36
5300-020-011	AD - BT40 - HV	BT / SBT40	115	137.5	186	71	91	M8	4.38
5300-020-012	AD - BT50 - HV	BT / SBT50	152.5	195.5	242	112	116	M10	10.90
5300-020-031	AD - CAT40 - HV	CAT / SCAT40	115	137.5	186	71	91	M8	4.39
5300-020-032	AD - CAT50 - HV	CAT / SCAT50	152.5	195.5	242	112	116	M10	10.96
5300-020-073	AD - HSK63 - HV	HSK63A	143.5	198.5	242	112	116	M10	12.6

Quick Positioning Design for HSK-A Assembly Device

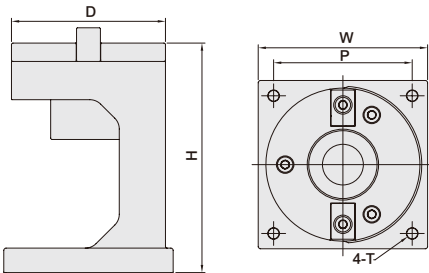
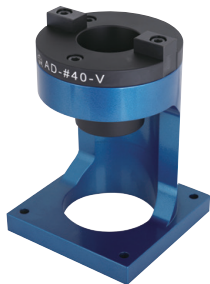


- Because the sizes of two drive slots of HSK-A tool holders are unequal, this design facilitates end users to be able to quickly place HSK-A tool holders on HSK-A assembly device in a correct way.



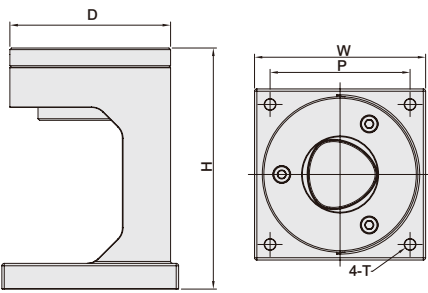
ASSEMBLY DEVICE

鎖刀座



VERTICAL TYPE 立式

MODEL NO.	TYPE	COMPATIBLE TOOLING	D	H	W	P	T	WEIGHT (KGS)
5300-021-010	AD - #30 - V	#30	100	150	110	90	M6	3.51
5300-021-011	AD - #40 - V	#40	100	150	110	90	M6	2.85
5300-021-012	AD - #50 - V	#50	115	190	160	130	M8	8.21



VERTICAL TYPE 立式

MODEL NO.	TYPE	COMPATIBLE TOOLING	D	H	W	P	T	WEIGHT (KGS)
5300-021-073	AD - 63A - V	HSK63A	100	150	110	90	M6	3.29
5300-021-075	AD - 100A - V	HSK100A	115	190	160	130	M8	7.53
5300-021-143	AD - C63 - V	PSC63	100	150	110	90	M6	3.32

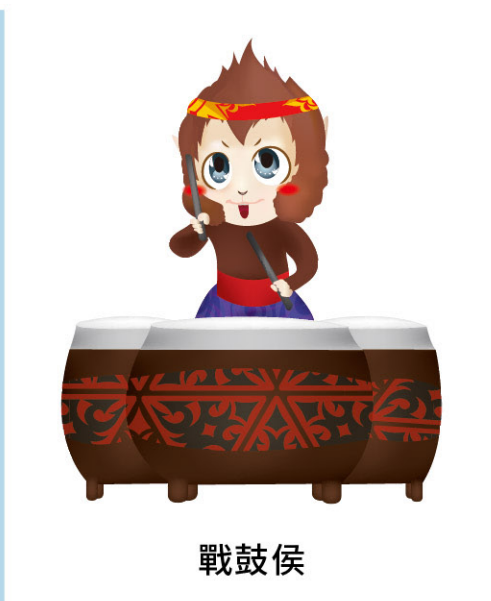


MEMO





智能侯



戰鼓侯



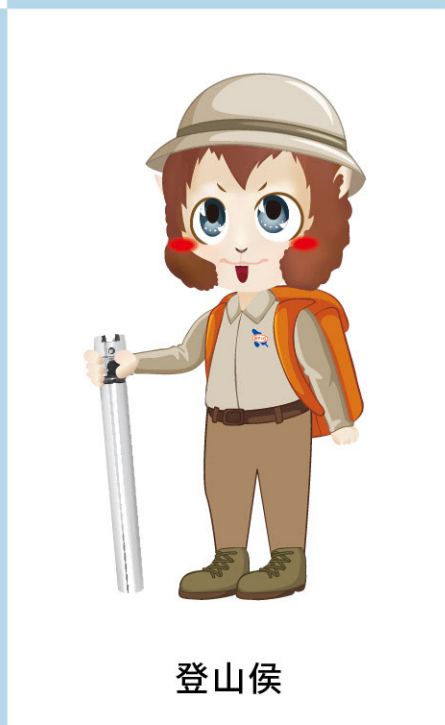
學識侯



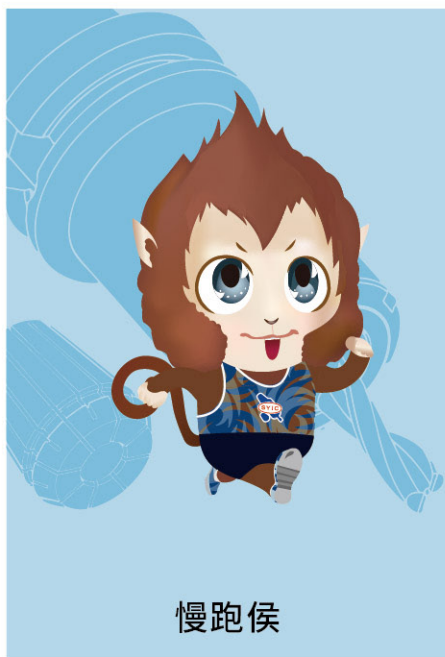
俠客侯



勝侯王



登山侯



慢跑侯



咖啡侯



鐵馬侯



www.syic.com

MEMO



MEMO





SHIN-YAIN INDUSTRIAL CO., LTD.
No.198, Jingpu Rd., Qingshui Dist., Taichung City 436, Taiwan
Tel: +886-4-26237575 | Fax: +886-4-26237676 | E-mail: sales@syic.com

