



# AWC JIG TOOL HOLDER

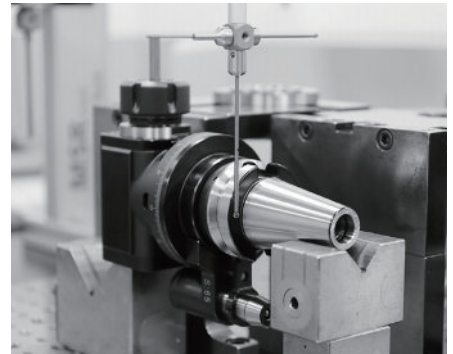
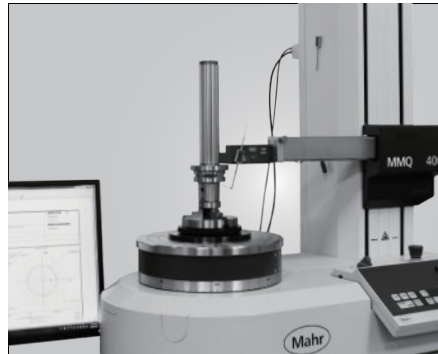
NO.2024-02



[www.syic.com](http://www.syic.com)



# COMPANY INTRODUCTION





## 品質創造信譽 信譽保證品質

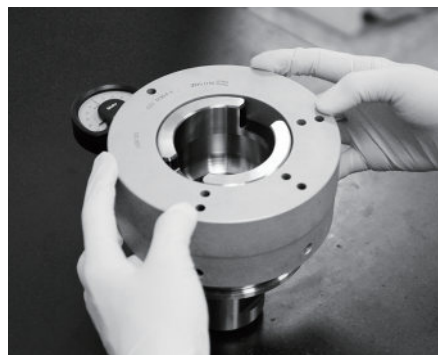
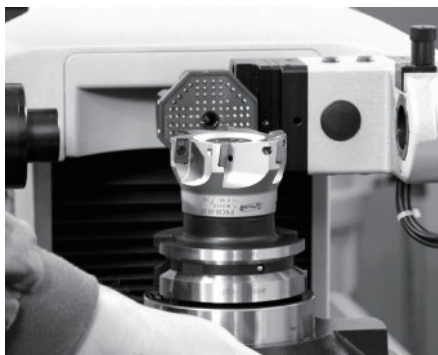
Quality creates reputation; reputation ensures quality.

### About SYIC

Established in 1979, SYIC is a professional manufacturer of precise tool holders, cutting tools, angel heads, boring series and collets with more than 500 employees. The taper types of tool holders we manufacture include BMT, BT (ISO 7388-2 & MAS 403), CAT (ANSI B5.50), DAT (ISO 7388-1 & DIN 69871-A), HSK (ISO 12164), PSC (ISO 26623), VDI (DIN ISO 10889) and straight shank holders.

SYIC is certified to ISO9001 and ISO14001. With contribution to the design, production and sale of high accuracy and inventive products, SYIC has over 300 pieces of patents worldwide. SYIC keeps investing in high-end equipment and measuring instruments from Japan and Europe to implement excellent quality control and manufacturing capability.

SYIC keeps the core value "Quality creates reputation; reputation ensures quality" to impress our customers, possessing professional technical skills to provide comprehensive solutions for customers, improving customers' machining efficiency, and enhancing the mutual competitiveness with customers. Based on the mission of "Excellent service, supreme quality," SYIC will continue to launch more high precision products to customers.



# Tool Holders

**Your reliable partner!**

————— CNC turning, milling and grinding —————

BMT  
PSC  
HSK  
SBT  
SCAT  
SDAT

Premium  
Quality

[www.syic.com](http://www.syic.com)

供需平衡 共榮共存

Maintain the balance of suppliers and customers and grow together.

未來之路 無限寬廣

Create a great future with infinite opportunities.

營運獲利 永續經營

Run a profitable company with sustainable development.

合作到底 共創通贏

Keep everlasting cooperation and together create a win-win situation.

成就彼此 榮耀一切

Support each other and accomplish mutual success.



### **Innovation is our mission!**

SYIC is committed to developing high precision products to optimize the machining process and offering professional technical service. With experienced technical professionals, our products are developed in response to different types of industries. We aim to achieve customers' demands from different industries including machining industry, mold and die industry, aerospace industry, automotive industry, and energy industry. We offer the most professional and technical service, effectively resolve your machining problems to create maximum production efficiency.

# AWC JIG TOOL HOLDER

AWC JIG TOOL HOLDER

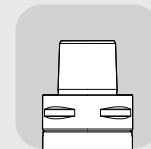
---

5~6

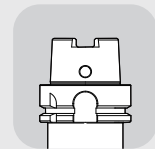


# AWC JIG TOOL HOLDER

Taper: **PSC & HSK**,  
with the best bending strength  
and positioning accuracy.

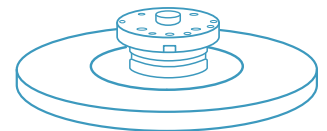


PSC

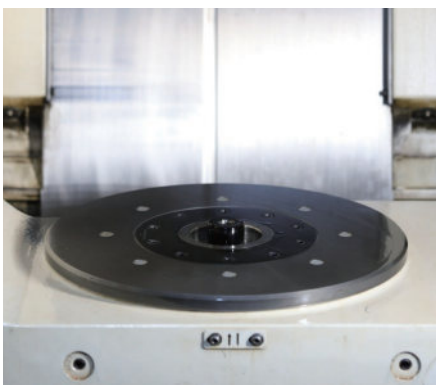


HSK

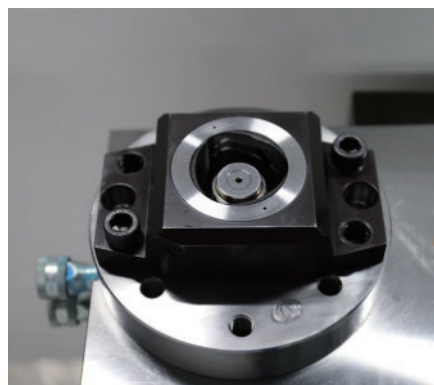
## 1 Quick Positioning and Clamping System



- ▶ Used for machine tables with quick positioning and clamping system.
- ▶ If a machine doesn't have a built-in quick positioning and clamping system, customers can install manual or hydraulic clamping system on the machine table.



Built-in Type



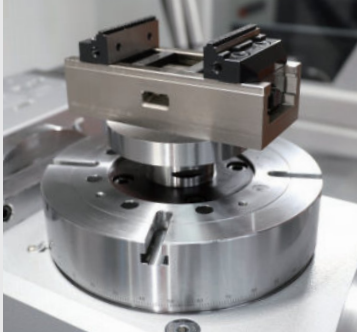
Hydraulic Type



Manual Type



## 2 Product Clamping Application



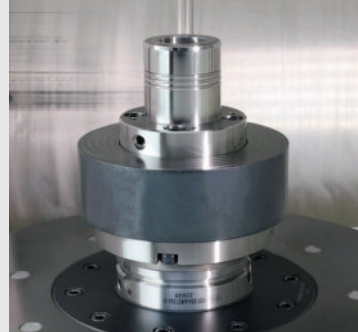
Workpiece clamped by self-centering vise

- ▶ Suitable for clamping round and square workpieces.



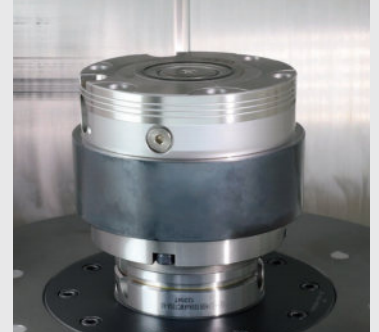
Workpiece clamped by three-jaw chuck

- ▶ Suitable for clamping round workpieces.



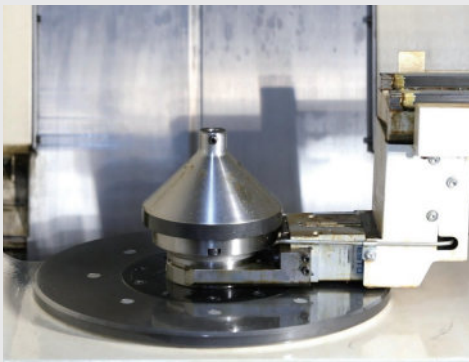
Workpiece clamped by hydraulic expansion toolholder

- ▶ Suitable for clamping all shapes of workpieces.

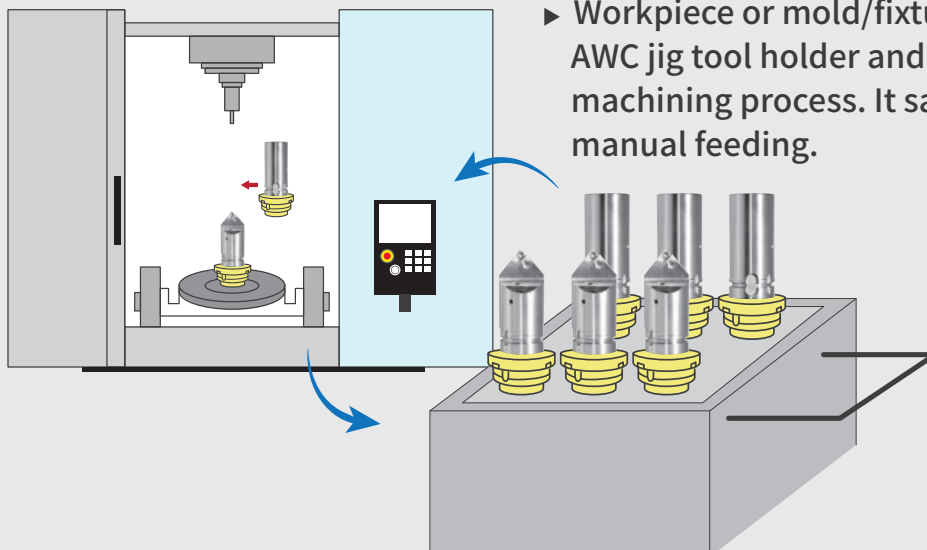


Workpiece clamped by quick change module

## 3 Improve Production Efficiency

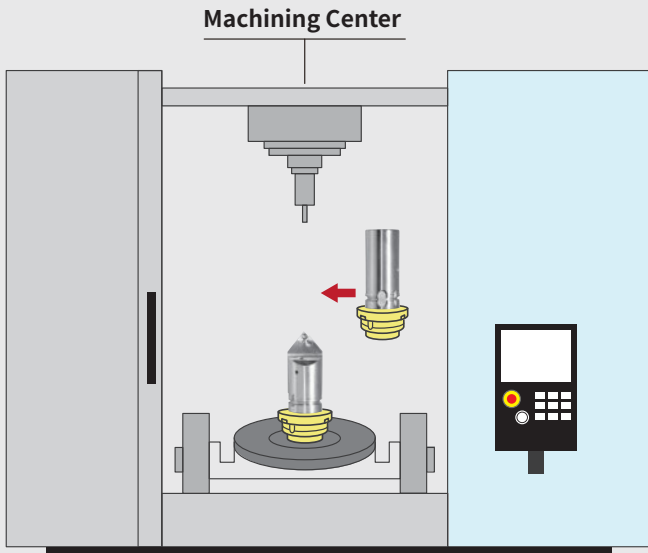


- ▶ The tool clamping system of machine table can quickly clamp or change AWC jig tool holders to increase production efficiency.
- ▶ Scan the QR-CODE to watch a demonstration video.

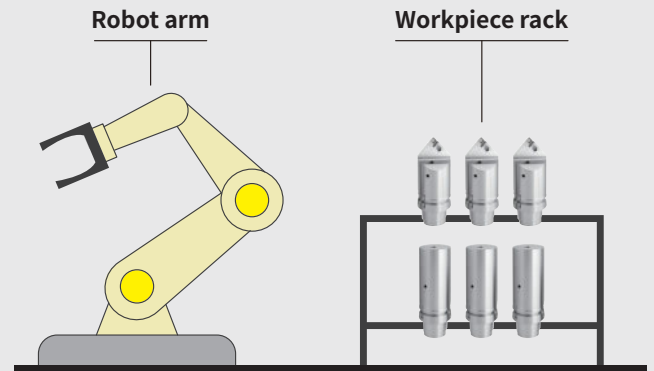


- ▶ Workpiece or mold/fixture can be pre-loaded in AWC jig tool holder and quickly changed during machining process. It saves the downtime for manual feeding.

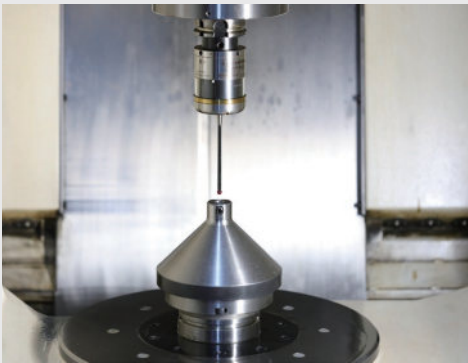
## 4 Support Automation System



► It's an indispensable choice to build automation system!



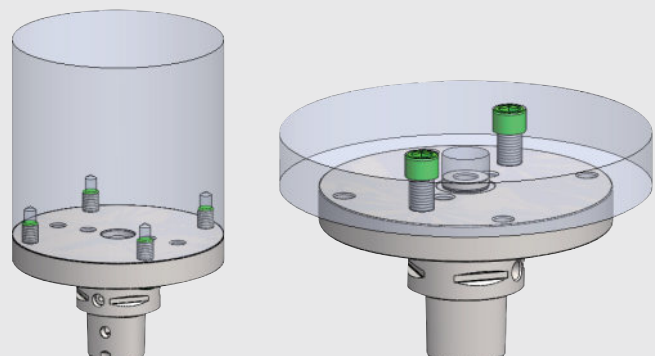
## 5 Use Touch Probe Holder for Accuracy Compensation



► It's recommended to use high-precision touch probe holder for workpiece positioning and size compensation to reduce manual operation errors, shorten the time for calibrating molds/fixtures, and ensure machining accuracy.

## 6 Various Clamping Methods

- There are different sizes of screw holes on the face of AWC jig tool holder, which provides customers with various methods of clamping workpieces and molds/fixtures.
- AWC jig tool holder can be customized.



# AWC JIG TOOL HOLDER

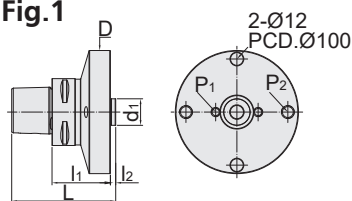
## For Large-Sized Workpieces

AWC 治具刀桿

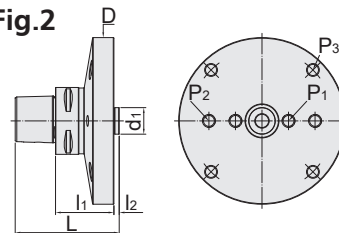
[A TYPE]



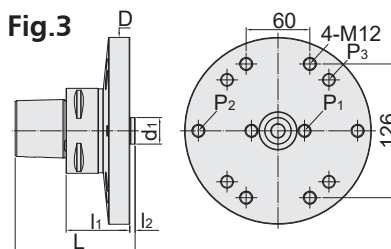
**Fig.1**



**Fig.2**



**Fig.3**



MODEL NO.	TYPE	L	l <sub>1</sub>	l <sub>2</sub>	D	d <sub>1</sub>	SCREW HOLES						Fig.	WEIGHT (KGS)
							ØP <sub>1</sub>	TYPE	ØP <sub>2</sub>	TYPE	ØP <sub>3</sub>	TYPE		
5143-027-116-055	PSC63 x AWC116A - 55 - LS	98	55	5	116	25	40	M8	96	M12	-	-	1	6.88
5143-027-157-055	PSC63 x AWC157A - 55 - LS	98	55	5	157	25	50	M12	100	M12	135	M10	2	12.12
5144-027-176-080	PSC80 x AWC176A - 80 - LS	133	80	5	176	25	50	M12	150	M12	135	M10	3	15.65
5073-027-116-055	HSK63A x AWC116A - 55 - LS	92	55	5	116	25	40	M8	96	M12	-	-	1	10.55
5073-027-157-055	HSK63A x AWC157A - 55 - LS	92	55	5	157	25	50	M12	100	M12	135	M10	2	7.77
5075-027-176-080	HSK100A x AWC176A - 80 - LS	135	80	5	176	25	50	M12	150	M12	135	M10	3	23.32
573T-027-116-055	HSK-T63 x AWC116A - 55 - LS	92	55	5	116	25	40	M8	96	M12	-	-	1	10.55
573T-027-157-055	HSK-T63 x AWC157A - 55 - LS	92	55	5	157	25	50	M12	100	M12	135	M10	2	7.77
575T-027-176-080	HSK-T100 x AWC176A - 80 - LS	135	80	5	176	25	50	M12	150	M12	135	M10	3	23.32

**Product Clamping Application:**



**Features:**

- ▶ Workpiece or mold/fixture can be pre-loaded in AWC jig tool holder offline to save machine downtime.
- ▶ There are different sizes of screw holes on the face of AWC, providing various clamping applications.
- ▶ AWC jig tool holder can be customized.
- ▶ Used for machine tables with quick positioning and clamping system.



**Reminder:**

▶ If a machine doesn't have a built-in quick positioning and clamping system, customer can install manual or hydraulic clamping system on the machine table.



# AWC JIG TOOL HOLDER

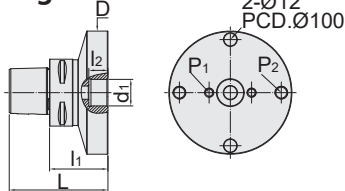
## For Small-Sized Workpieces

AWC 治具刀桿

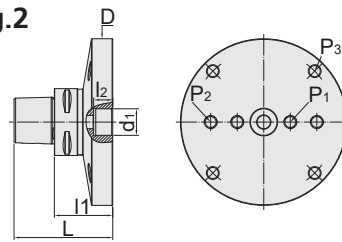
[B TYPE]



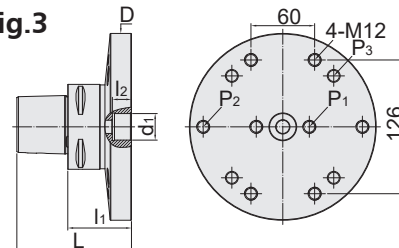
**Fig.1**



**Fig.2**



**Fig.3**



MODEL NO.	TYPE	L	l <sub>1</sub>	l <sub>2</sub>	D	d <sub>1</sub>	SCREW HOLES						Fig.	WEIGHT (KGS)
							ØP <sub>1</sub>	TYPE	ØP <sub>2</sub>	TYPE	ØP <sub>3</sub>	TYPE		
5143-028-116-055	PSC63 x AWC116B - 55 - LS	93	55	18	116	25	40	M8	96	M12	-	-	1	6.82
5143-028-157-055	PSC63 x AWC157B - 55 - LS	93	55	18	157	25	50	M12	100	M12	135	M10	2	12.05
5144-028-176-080	PSC80 x AWC176B - 80 - LS	128	80	18	176	25	50	M12	150	M12	-	-	3	15.60
5073-028-116-055	HSK63A x AWC116B - 55 - LS	87	55	18	116	25	40	M8	96	M12	135	M10	1	10.47
5073-028-157-055	HSK63A x AWC157B - 55 - LS	87	55	18	157	25	50	M12	100	M12	135	M10	2	7.69
5075-028-176-080	HSK100A x AWC176B - 80 - LS	130	80	18	176	25	50	M12	150	M12	135	M10	3	15.45
573T-028-116-055	HSK-T63 x AWC116B - 55 - LS	87	55	18	116	25	40	M8	96	M12	135	M10	1	10.47
573T-028-157-055	HSK-T63 x AWC157B - 55 - LS	87	55	18	157	25	50	M12	100	M12	135	M10	2	7.69
575T-028-176-080	HSK-T100 x AWC176B - 80 - LS	130	80	18	176	25	50	M12	150	M12	135	M10	3	15.45

**Product Clamping Application:**



**Features:**

- ▶ Workpiece or mold/fixture can be pre-loaded in AWC jig tool holder offline to save machine downtime.
- ▶ There are different sizes of screw holes on the face of AWC, providing various clamping applications.
- ▶ AWC jig tool holder can be customized.
- ▶ Used for machine tables with quick positioning and clamping system.



**Reminder:**

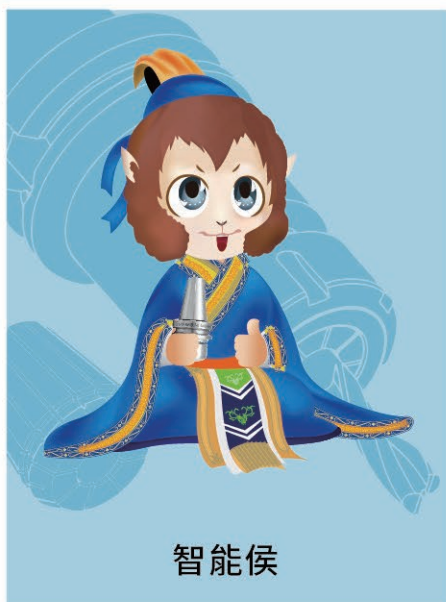
▶ If a machine doesn't have a built-in quick positioning and clamping system, customer can install manual or hydraulic clamping system on the machine table.



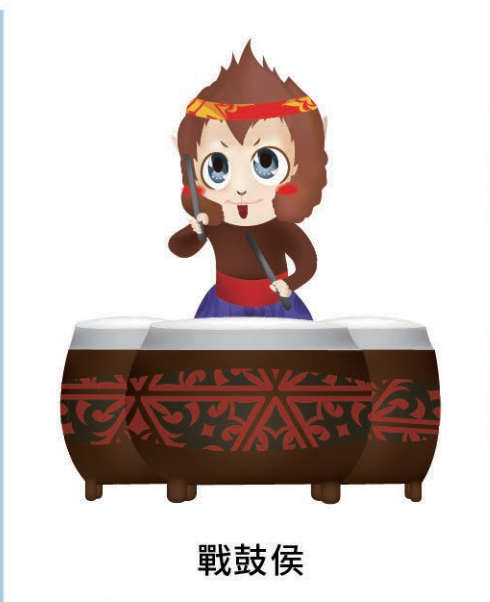
# MEMO

Blank lined area for writing the memo content.





智能侯



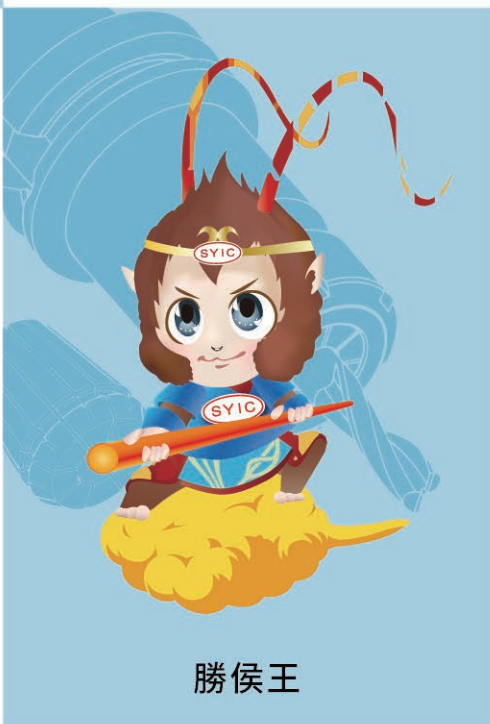
戰鼓侯



學識侯



俠客侯



勝侯王



登山侯



慢跑侯



咖啡侯



鐵馬侯



[www.syic.com](http://www.syic.com)



SHIN-YAIN INDUSTRIAL CO., LTD.  
No.198, Jingpu Rd., Qingshui Dist., Taichung City 436406, Taiwan  
Tel: +886-4-26237575 | Fax: +886-4-26237676 | E-mail: sales@syic.com

