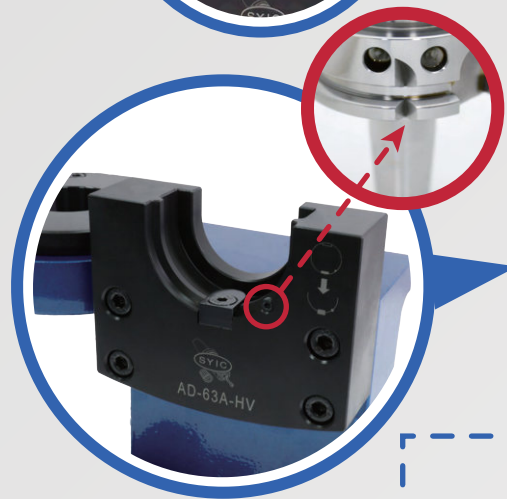
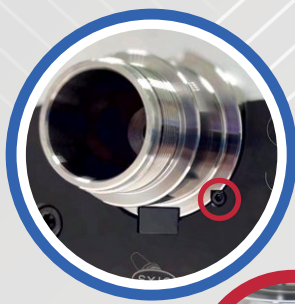


ASSEMBLY DEVICE TWO-WAY TYPE HSK-A



STABLE

- ▶ The body and tool pot are precisely machined, so it allows stable and firm mounting.
- ▶ The horizontal tool pot has a patented heightened design, making tool assembling and dismounting more stable.
- ▶ The quick positioning design helps users to quickly place HSK-A tool holders on HSK-A assembly device in a correct way.



HIGH RIGIDITY

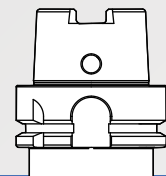


PATENT DESIGN

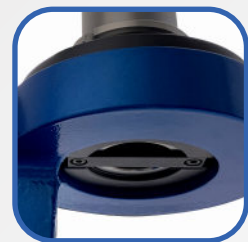
PAT NO.
TW M614470
TW M614781
CN ZL201922325128.6
CN ZL202120822487.7
CN ZL202120822431.1
JP 3233841
CN 202021103718
US 11440150

AVAILABLE TAPER

DIN 69893-A HSK-A

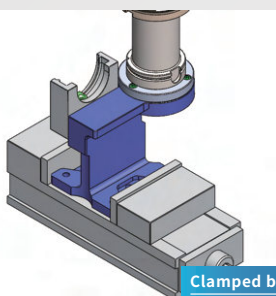


- ▶ Superior performance for installing and uninstalling accessories in long-reach or heavy holders.
- ▶ The crossbar design of vertical tool pot helps with tool holders positioning and prevents slippage.

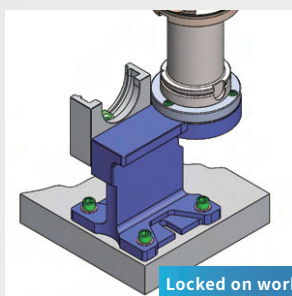


- ▶ Nodular-cast-iron base has strengthened rigidity.

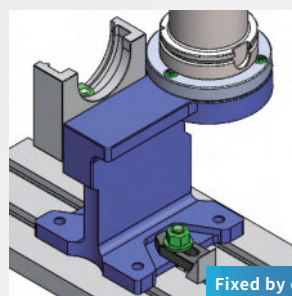
- ▶ The design of bottom seat is patented, which can be fixed not only on the workbenches, but also in machines by vises or clamps.



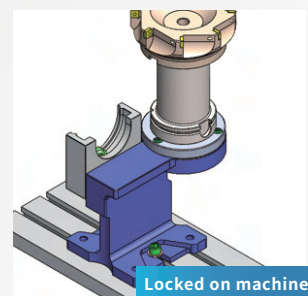
Clamped by vise



Locked on workbench



Fixed by clamp



Locked on machine table



心源工業股份有限公司
SHIN-YAIN INDUSTRIAL CO., LTD.

436406 台中市清水區菁埔路198號
NO.198, Jingpu Rd., Qingshui Dist,
Taichung City 436406, Taiwan

Tel: +886-4-26237575
Fax: +886-4-26237676
E-mail: sales@syic.com



www.syic.com