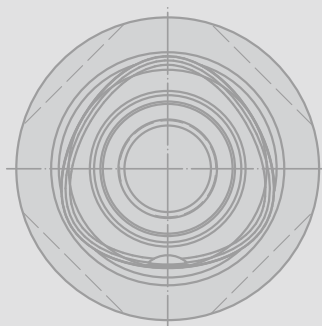


PSC WORKPIECE QUICK CHANGE SYSTEM

Hydraulic Type & Manual Type



- ▶ Quick positioning and workpiece clamping save the downtime for manual feeding.
- ▶ Workpiece can be clamped offline to decrease setting time in the machine and increase production efficiency.
- ▶ PSC triple-face contact structure has the best bending strength and superior repeat positioning accuracy($\pm 2\mu\text{m}$).
- ▶ Clamping force is inspected individually before delivery.

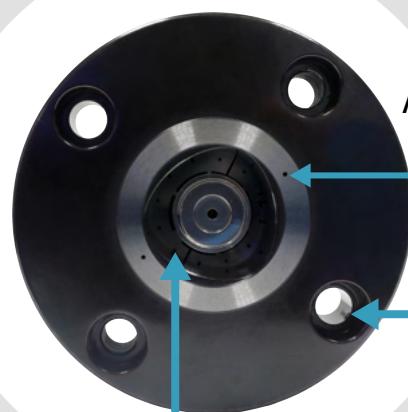
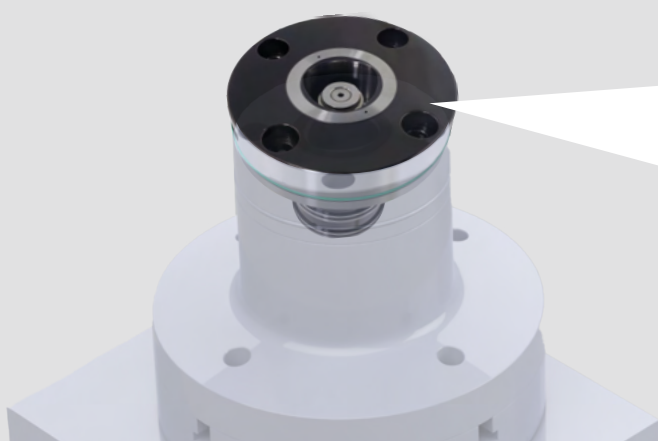


1 Available Type

Hydraulic Type:

used for 4-axis and 5-axis rotary table.

Optimum for Automation



Airtight detection holes

M12 screw holes

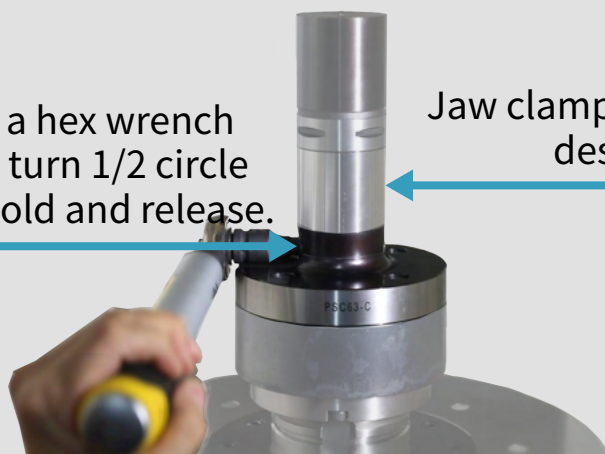
Air cleaning hole

Manual Type:

used for CNC 3-axis machining center table and 4-axis and 5-axis rotary table.

Use a hex wrench and turn 1/2 circle to hold and release.

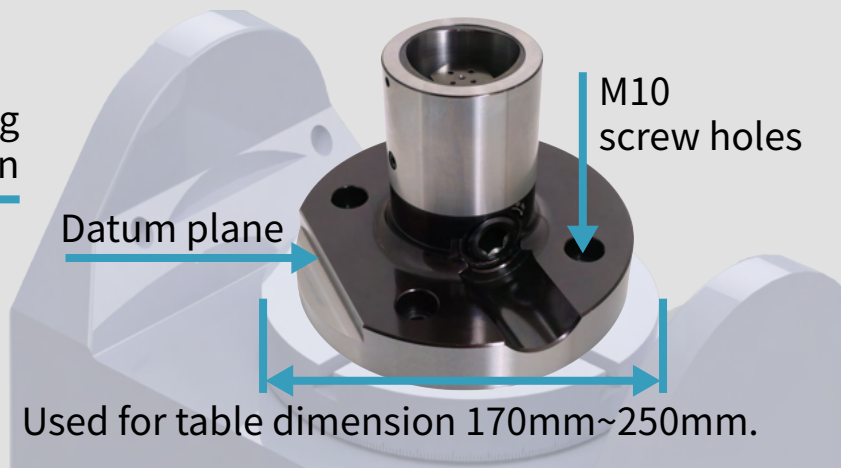
Jaw clamping design



Datum plane

M10 screw holes

Used for table dimension 170mm~250mm.



心源工業股份有限公司
SHIN-YAIN INDUSTRIAL CO., LTD.

436406 台中市清水區菁埔路198號
NO.198, Jingpu Rd., Qingshui Dist,
Taichung City 436406, Taiwan

Tel: +886-4-26237575
Fax: +886-4-26237676
E-mail: sales@syic.com



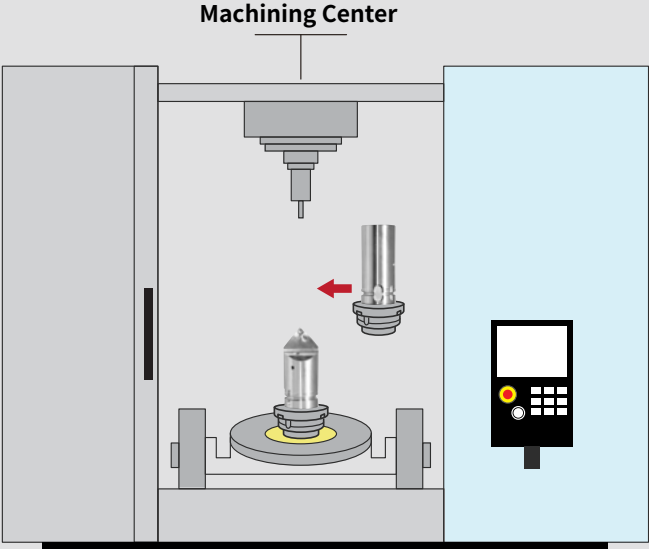
www.syic.com



2 Application of PSC Workpiece Quick Change System



3 Support Automation System



► It's an indispensable choice to build automation system!

