

SFC FAMILY



SHRINK FIT CHUCK

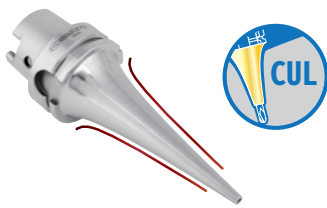


CP TYPE



- ▶ The design of three coolant holes on the face is suitable for tools without coolant holes.
- ▶ Optimizing heat dissipation and chip evacuation, and ensuring better surface finish of workpiece.
- ▶ Three coolant holes allow the internal hole to expand evenly free from deformation and maintain good runout accuracy, extending the use life of holder.

CUL TYPE



- ▶ Adopting the curve line design, its thick neck improves the rigidity and the slim nose avoids interference during machining.
- ▶ It shortens tool overhanging length and extends tool life.
- ▶ Perfect design for 5-axis machining!

CUD TYPE



- ▶ Comparing to CUL type shrink fit chuck, the front wall of the CUD type is thicker, providing more superior machining rigidity.
- ▶ Adopting the curve line design, it avoids interference during machining.
- ▶ The design of three coolant holes on the face is suitable for tools without coolant holes, saving the cost of coolant tools.

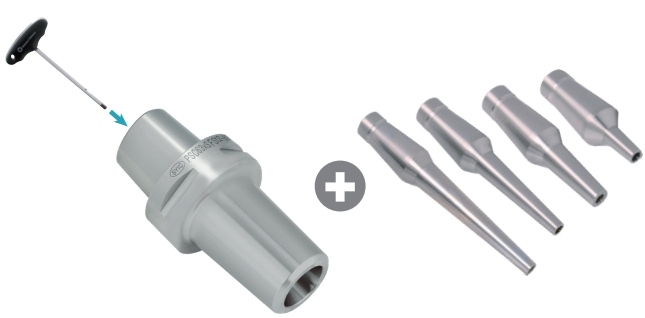
STANDARD TYPE-SFC

- ▶ The front nose is 4.5°, suitable for general machining.

STANDARD TYPE-SFCT

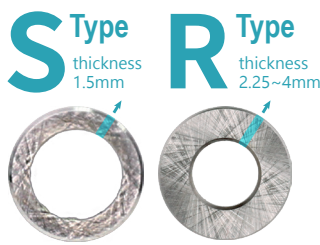
- ▶ The front nose is 3°, reducing interference with slimmer wall; suitable for mold machining, etc.

SFS SLIM-FIT COLLET CHUCK & SFS/MFS SLIM-FIT SHRINK EXTENSION



Slim-Fit Shrink Extension:

- SFS- hot work die steel & MFS- heat resistant steel
- ▶ Choose suitable types according to machining demand.
- ▶ Modular design with drawbar clamping, saving purchasing costs.
- ▶ Available with S type and R type.



SHRINK FIT EXTENSION

