

# SFS SERIES

SFS SLIM-FIT COLLET CHUCK &  
SFS/MFS SLIM-FIT SHRINK EXTENSION



HIGH PRECISION

FOR 5 AXIS MACHINING

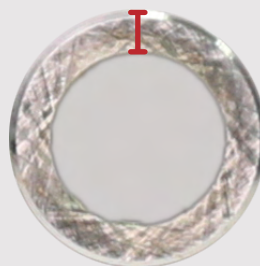
HIGH SPEED

G2.5 25000rpm



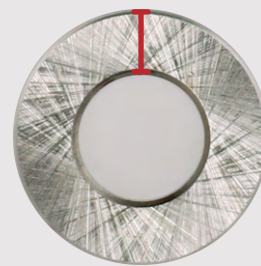
- ▶ Modular design with drawbar clamping, saving purchasing costs.
- ▶ Two types of extension made from hot work die steel (SFS) and heat resistant steel (MFS) are available.
- ▶ Slim-fit shrink extension is available with S type and R type.

**S Type:**  
thickness 1.5mm



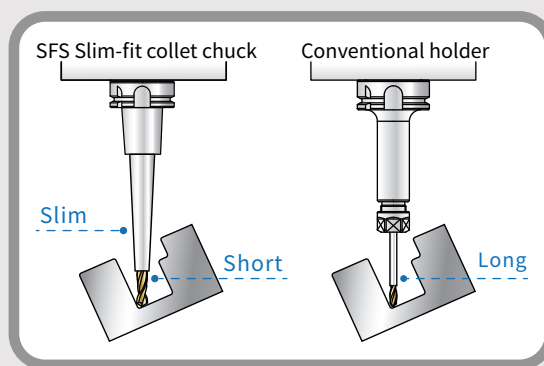
Avoid interference

**R Type:**  
thickness 2.25mm~4mm



High rigidity

- ▶ Perfect design for 5-axis machining.



- ▶ Used for coolant-through cutting tools.

The pull stud used for BT30/SBT30xSFS Slim-fit collet chuck is ONE PIECE design with draw bolt. If you have a demand for customized pull studs, please contact our sales personnel.



心源工業股份有限公司  
SHIN-YAIN INDUSTRIAL CO., LTD.

436406 台中市清水區菁埔路198號  
NO.198, Jingpu Rd., Qingshui Dist,  
Taichung City 436406, Taiwan

Tel: +886-4-26237575  
Fax: +886-4-26237676  
E-mail: sales@syic.com



www.syic.com