

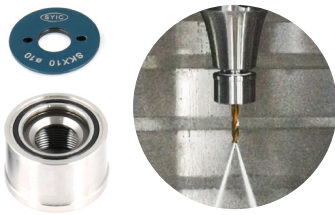


- HIGH SPEED
- HIGH RIGIDITY
- HIGH PRECISION
- 5 μ m

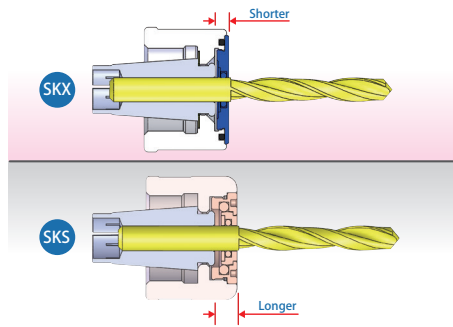
SKX COLLET CHUCK SYSTEM



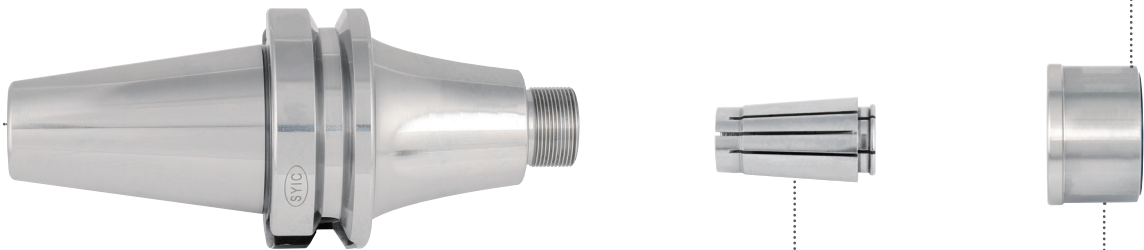
▶ SKX sealed nuts and sealed caps are capable of coolant pressure up to 70 bar.



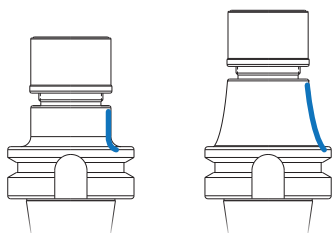
▶ Compared to other brand, shorter distance between sealed cap, sealed nut and collets allows shorter tool overhanging length.



▶ Special SKX sealed cap holes avoid the problem of slipping when fastening.



▶ Besides the standard design of straight neck, SKX tool holders with length over 120mm also have curved line design for better rigidity and less vibration.



▶ SKX tool holders and collets are exchangeable with other brands.

▶ The OD of SKX nut is the same with other brand, so it's workable with other brand spanners.

