

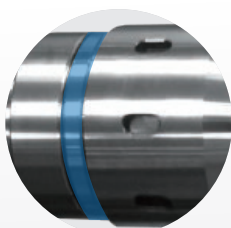


# MLD MULTI-LOCK MILLING CHUCK SERIES

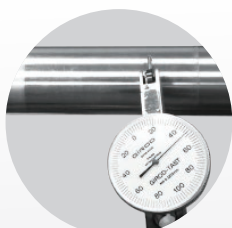
## HIGH RIGIDITY AND DUST PROOF

- ▶ After clamping tools (the requirement of shank tolerance is less than h6), the nut and the flange contact firmly to prevent the needle bearing cage from deforming, rigidity is increased and achieves the function of dust proof.
- ▶ Featured with high precision and easy-to-fasten, vibrations do not occur in high speed machining or heavy duty machining.

## RUNOUT ACCURACY WITHIN 5µm



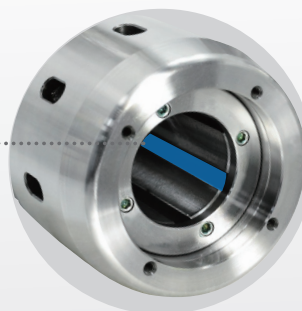
- ▶ After fastening, the nuts and tool holders contact tight to enhance the cutting rigidity and achieve dustproof purposes.



- ▶ Runout accuracy within 5µm at 4D length.

## NEEDLE BEARING CAGE

- ▶ Special slotted design of internal hole increases the clamping force and decreases vibration. Suitable for heavy-duty machining.



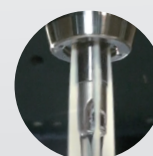
## MLD SYSTEM



COLLET



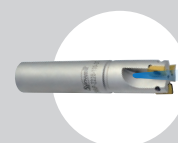
GENERAL TOOL



SEALED CAP



COLLET



COOLANT THROUGH TOOL

