



# **SBLC SLIM-FIT COLLET CHUCK**

## **COOLANT-THROUGH TYPE**

TW PAT NO. M274178



BT/SBLC  
SBT/SBLC



CAT/SBLC  
SCAT/SBLC



DAT/SBLC  
SDAT/SBLC



HSK/SBLC

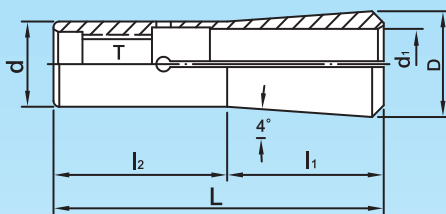
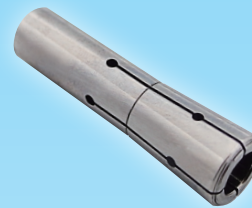


PSC/SBLC

Coolant draw-bolt



SLC sealed collet



MODEL NO.	TYPE	d <sub>1</sub>	D	d	L	l <sub>1</sub>	l <sub>2</sub>	T
SYIC - 18851C	SLC - 6C	3, 4, 5, 6	10	8	36	24	12	M6 x 1.0P
SYIC - 18852C	SLC - 12C	3, 4, 5, 6, 8, 10, 12	18	14.5	57	25.45	31.55	M10 x 1.5P
SYIC - 18853C	SLC - 20C	3, 4, 5, 6, 8, 10, 12, 16, 18, 20	27	21	70	35	35	M12 x 1.75P
SYIC - 18854C	SLC - 25C	6, 8, 10, 12, 16, 18, 20, 25	32.4	25	80	43.5	34.5	M16 x 1.5P

### **Feature:**

The non-nut design of SBLC collet chuck is suitable for the small size workpiece. It can reduce the interference during the manufacturing process.

With the coolant draw-bolt and SLC sealed collet, SBLC collet chuck can be used with coolant-through cutting tools for center coolant. It improves the metal chip removal capability, cools down the workpiece and improves the surface finish of the workpiece.