

# QUICK CHANGE TAPPING CHUCK



QUICK CHANGE TAPPING CHUCK

P.41~47

**\*with length compensation on tension and compression**

- ▶ Quick and easy tool change in seconds !
- ▶ Absorb any inaccuracies between the synchronous movement of the rotating spindle and the moving Z axis, increasing tap life and improving tapping quality.



TAPPING COLLET

P.48~50

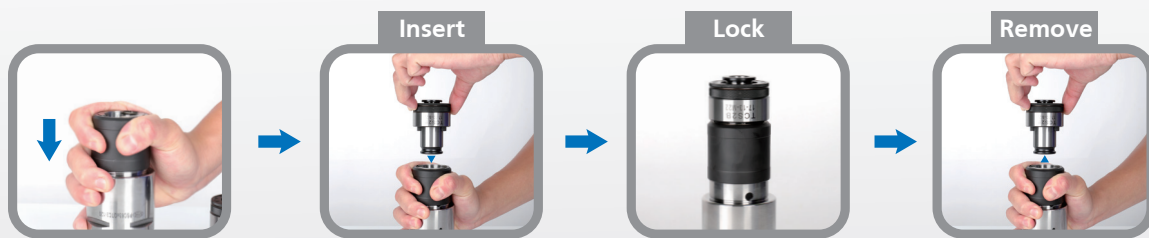
**\*with safety clutch mechanism**

To prevent tap breakage when higher torque is applied to a tap (Use with a Quick Change Tapping Chuck with length compensation)

## Installing and Removing Steps:

### Tapping chuck and tapping collet

- ▶ Pull down the sleeve of the tapping chuck.
- ▶ Insert tapping collet into tapping chuck and they are connected firmly.
- ▶ Pull back the sleeve of the tapping chuck to remove the tap collet.



### Tapping collet and tap

- ▶ Insert a tap into the bottom of tapping collet and rotate the tap manually to connect them firmly.
- ▶ Push down the ball bush to remove the tap.

